



HERITAGE

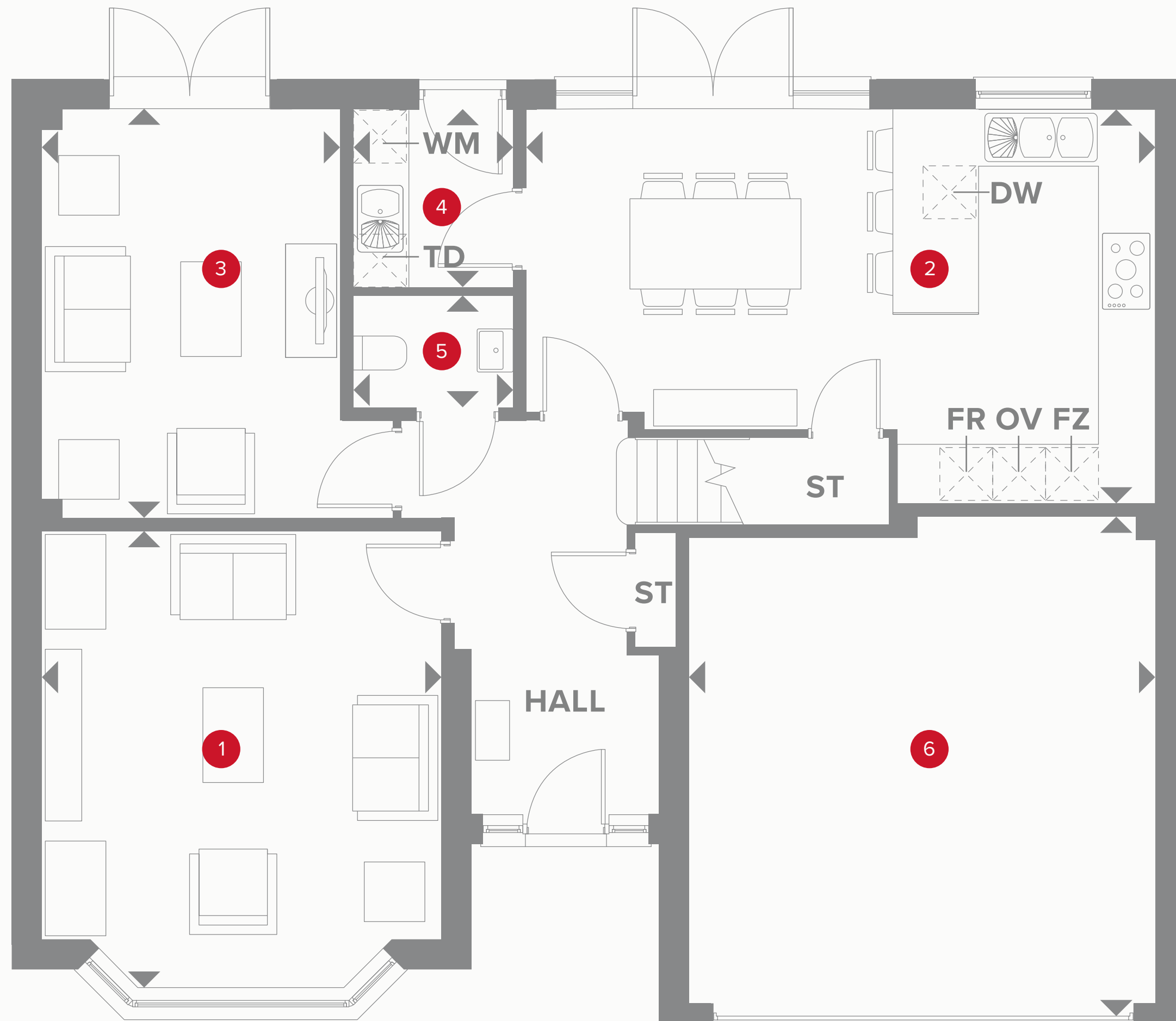
- REDROW -

THE MARLBOROUGH

FIVE BEDROOM HOME



THE MARLBOROUGH GROUND FLOOR



1	Lounge	15'11" x 14'1"	4.85 x 4.30 m
2	Kitchen/ Dining	22'1" x 10'10"	6.74 x 4.22 m
3	Snug	14'5" x 10'6"	4.39 x 3.20 m
4	Utility	6'3" x 5'7"	1.91 x 1.71 m
5	Cloaks	5'7" x 3'11"	1.71 x 1.20 m
6	Garage	17'7" x 16'6"	5.37 x 5.03 m



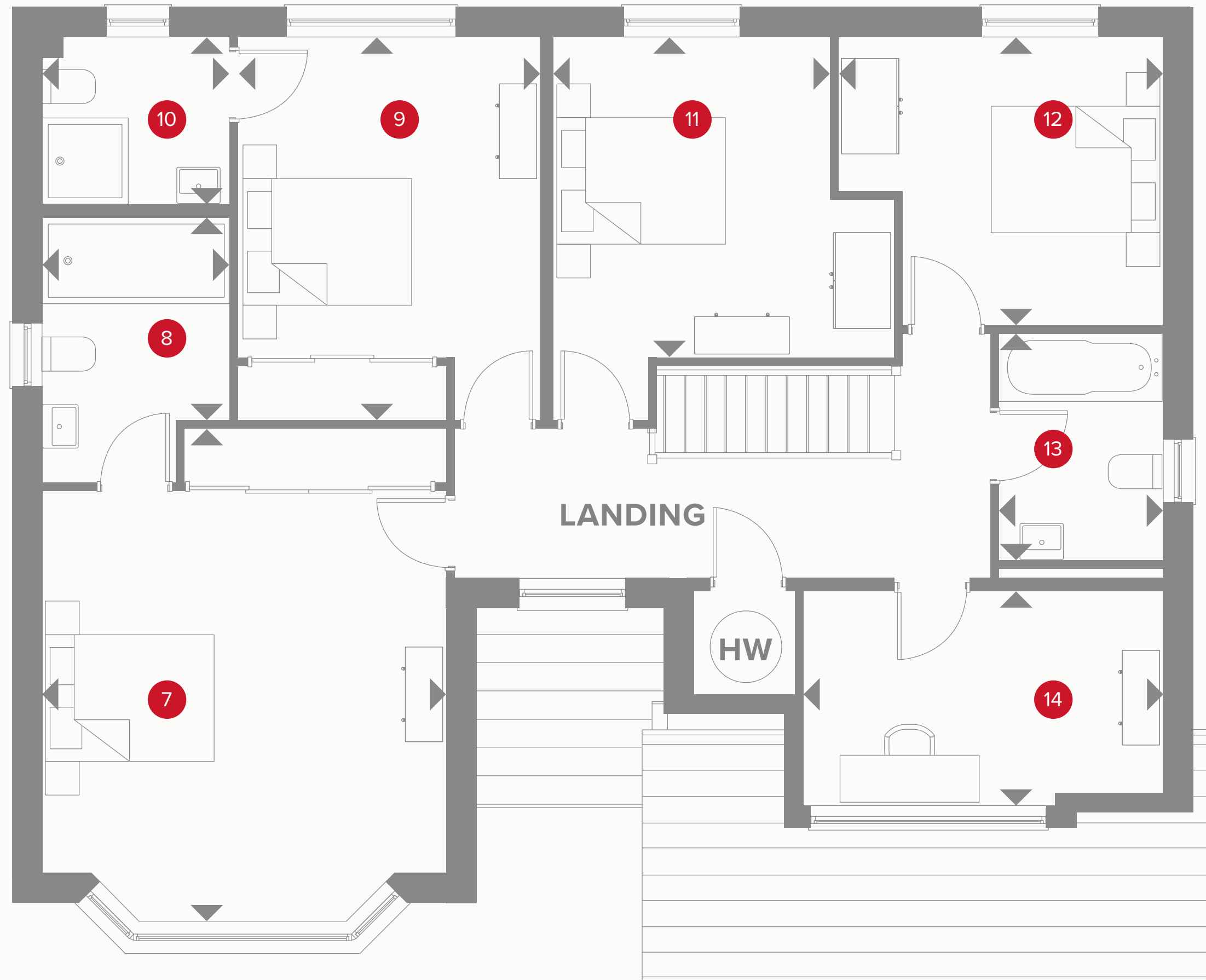
KEY

Hob
OV Oven
FR Fridge
FZ Freezer

Dimensions start
TD Tumble dryer space
WM Washing machine space
DW Dishwasher space

ST Storage cupboard
WC Wine cooler
MW Microwave
SO Steam Oven

THE MARLBOROUGH FIRST FLOOR



7	Bedroom 1	17'2" x 14'1"	5.22 x 4.30 m
8	En-suite 1	9'4" x 6'7"	2.85 x 2.00 m
9	Bedroom 2	13'5" x 10'7"	4.08 x 3.23 m
10	En-suite 2	6'7" x 5'10"	2.00 x 1.78 m
11	Bedroom 3	12'0" x 11'3"	3.65 x 3.42 m
12	Bedroom 4	11'5" x 10'1"	3.47 x 3.08 m
13	Bedroom 5	12'8" x 7'2"	3.85 x 2.18 m
14	Bathroom	8'0" x 5'10"	2.43 x 1.77 m



KEY

- ◀ Dimensions start
- HW Hot water storage

**CONSUMER
CODE FOR
HOME BUILDERS**
www.consumercode.co.uk

Customers should note this illustration is an example of the Marlborough house type. All dimensions indicated are approximate and the furniture layout is for illustrative purposes only. Homes may be 'handed' (mirror image) versions of the illustrations, and may be detached, semi-detached or terraced. Materials used may differ from plot to plot including render and roof tile colours. Detailed plans and specifications are available for inspection for each plot at our Sales Centre during working hours and customers must check their individual specifications prior to making a reservation.