



**TAILORED**

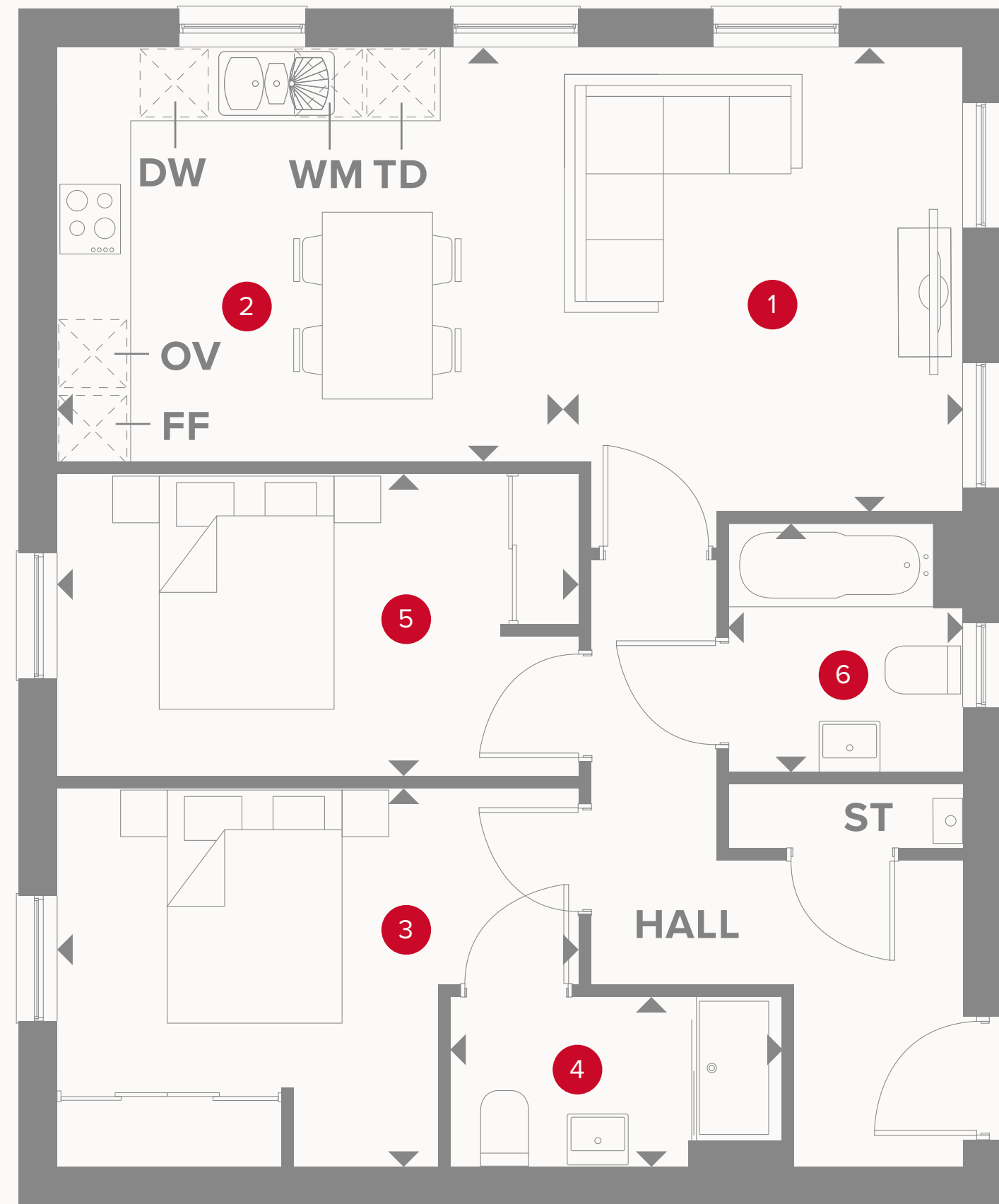
- REDROW -

# SWITHLAND

TWO BEDROOM APARTMENTS

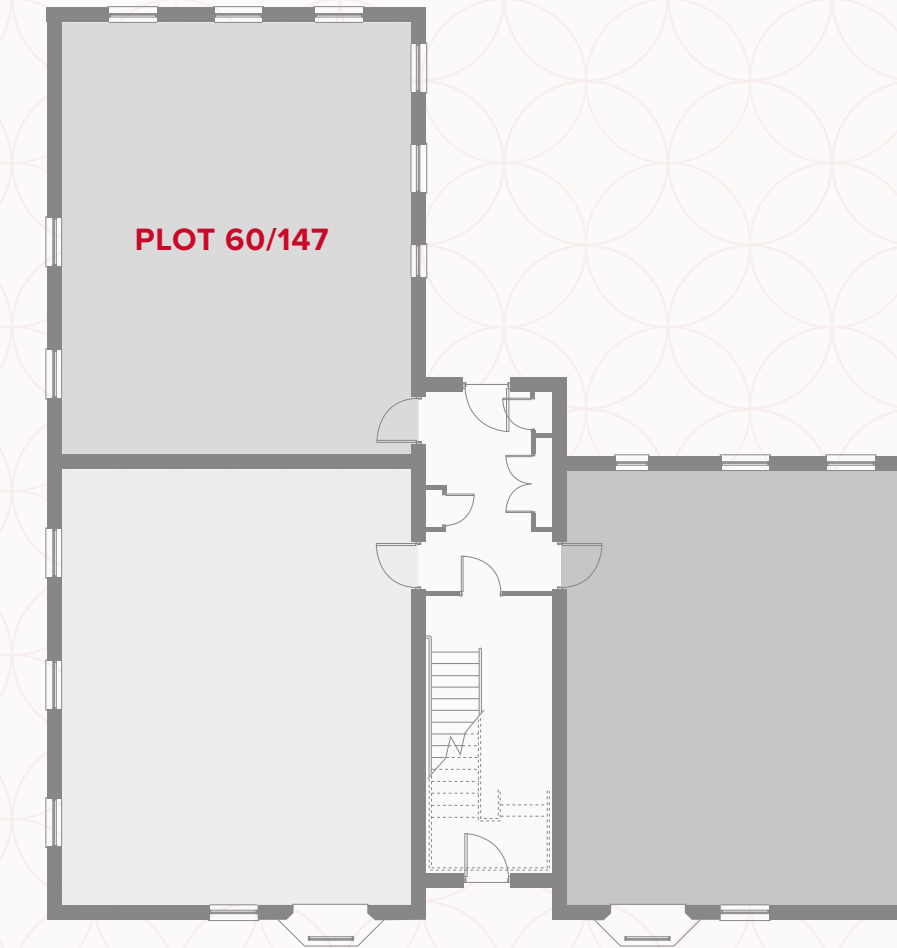


# PLOT 60/147



# SWITHLAND GROUND FLOOR

1	Lounge	14'1" x 12'5"	4.31 x 3.82 m
2	Kitchen/ Dining	11'2" x 10'3"	3.41 x 3.13 m
3	Bedroom 1	14'1" x 10'2"	4.30 x 3.11 m
4	En-suite	9'0" x 4'6"	2.74 x 1.39 m
5	Bedroom 2	14'1" x 8'2"	4.30 x 2.50 m
6	Bathroom	6'8" x 6'3"	2.06 x 1.92 m

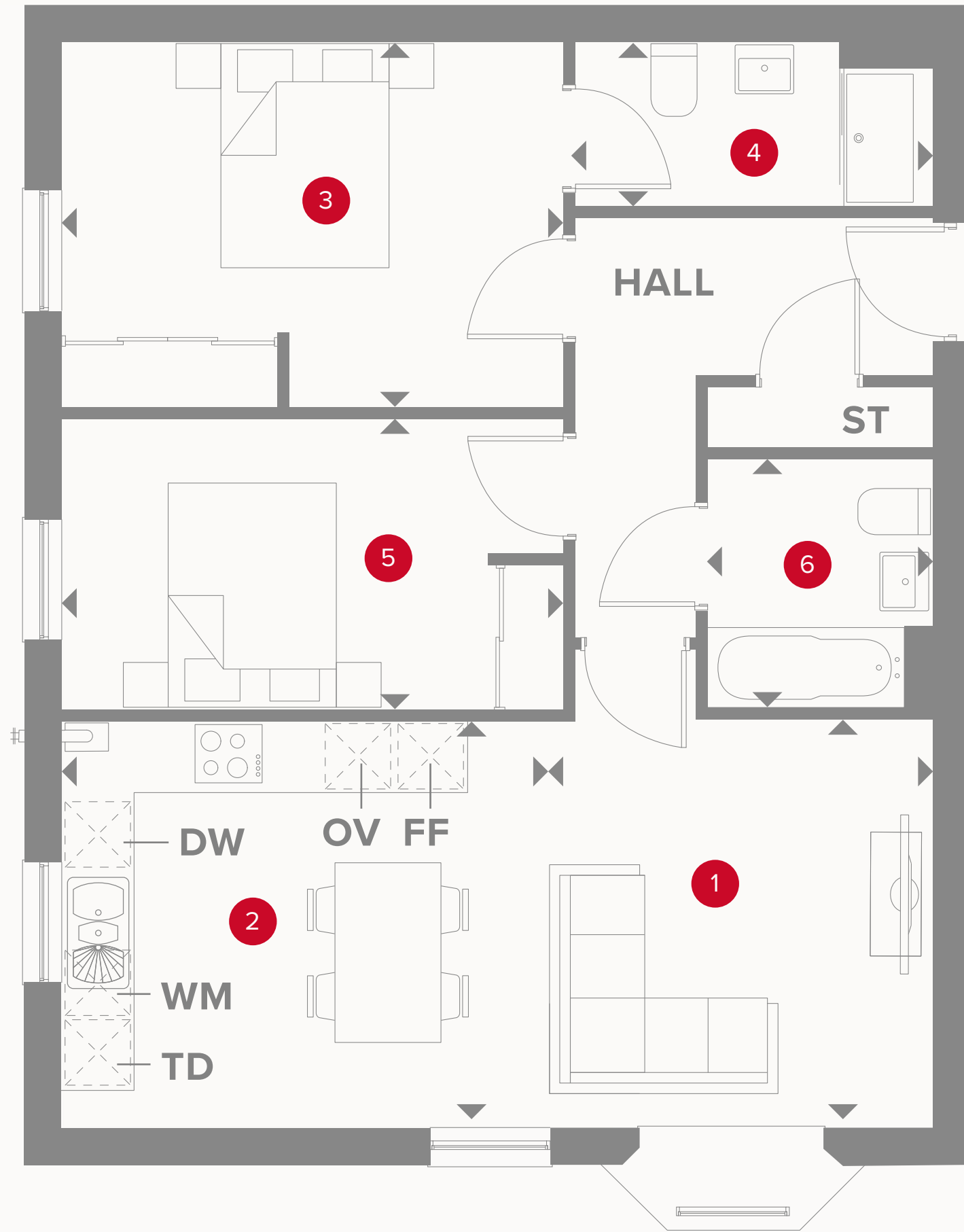


## KEY

	Hob		Dimensions start
<b>OV</b>	Oven	<b>ST</b>	Storage cupboard
<b>FF</b>	Fridge/freezer	<b>WM</b>	Washing machine space
<b>TD</b>	Tumble dryer space	<b>DW</b>	Dish washer space

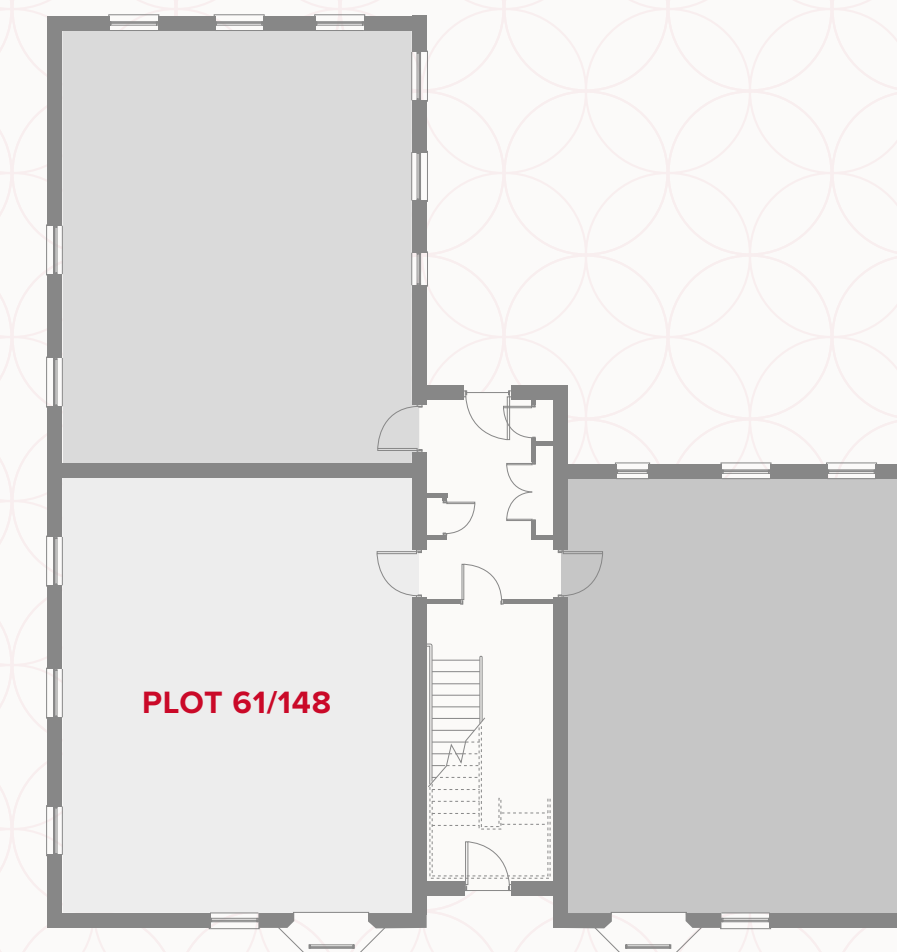
Customers should note this illustration is an example of the Swithland apartment. All dimensions indicated are approximate and the furniture layout is for illustrative purposes only. Homes may be 'handed' (mirror image) versions of the illustrations, and may be detached, semi-detached or terraced. Materials used may differ from plot to plot including render and roof tile colours. Detailed plans and specifications are available for inspection for each plot at our Sales Centre during working hours and customers must check their individual specifications prior to making a reservation. All wardrobes are subject to site specification. Please see Sales Consultant for further details.

# PLOT 61/148



# SWITHLAND GROUND FLOOR

1	Lounge	13'2" x 11'4"	4.03 x 3.47 m
2	Kitchen/ Dining	11'4" x 11'2"	3.47 x 3.41 m
3	Bedroom 1	14'1" x 10'2"	4.30 x 3.11 m
4	En-suite	10'0" x 4'6"	3.05 x 1.40 m
5	Bedroom 2	14'1" x 8'2"	4.30 x 2.50 m
6	Bathroom	7'1" x 6'3"	2.16 x 1.91 m

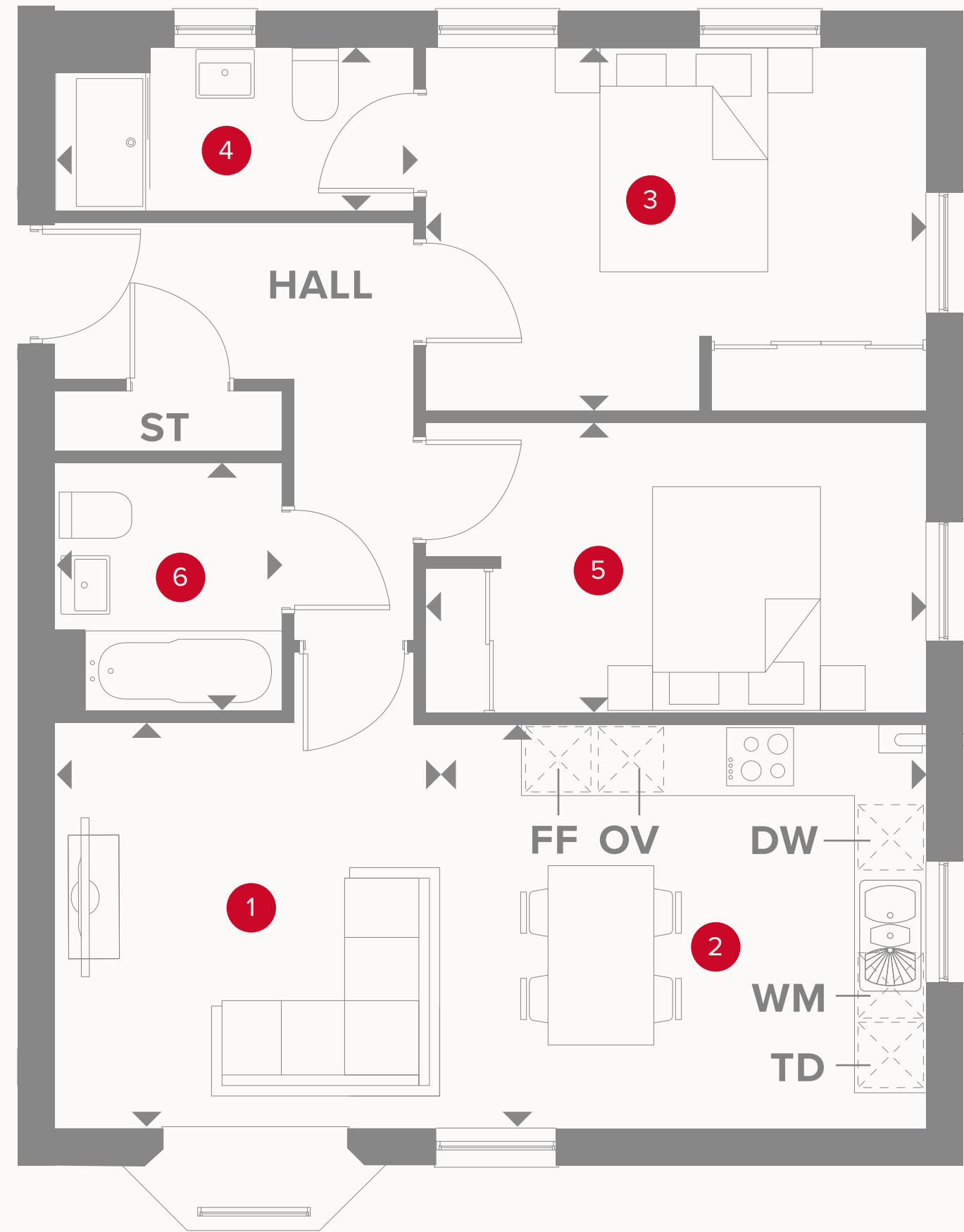


## KEY

	Hob		Dimensions start
<b>OV</b>	Oven	<b>ST</b>	Storage cupboard
<b>FF</b>	Fridge/freezer	<b>WM</b>	Washing machine space
<b>TD</b>	Tumble dryer space	<b>DW</b>	Dish washer space

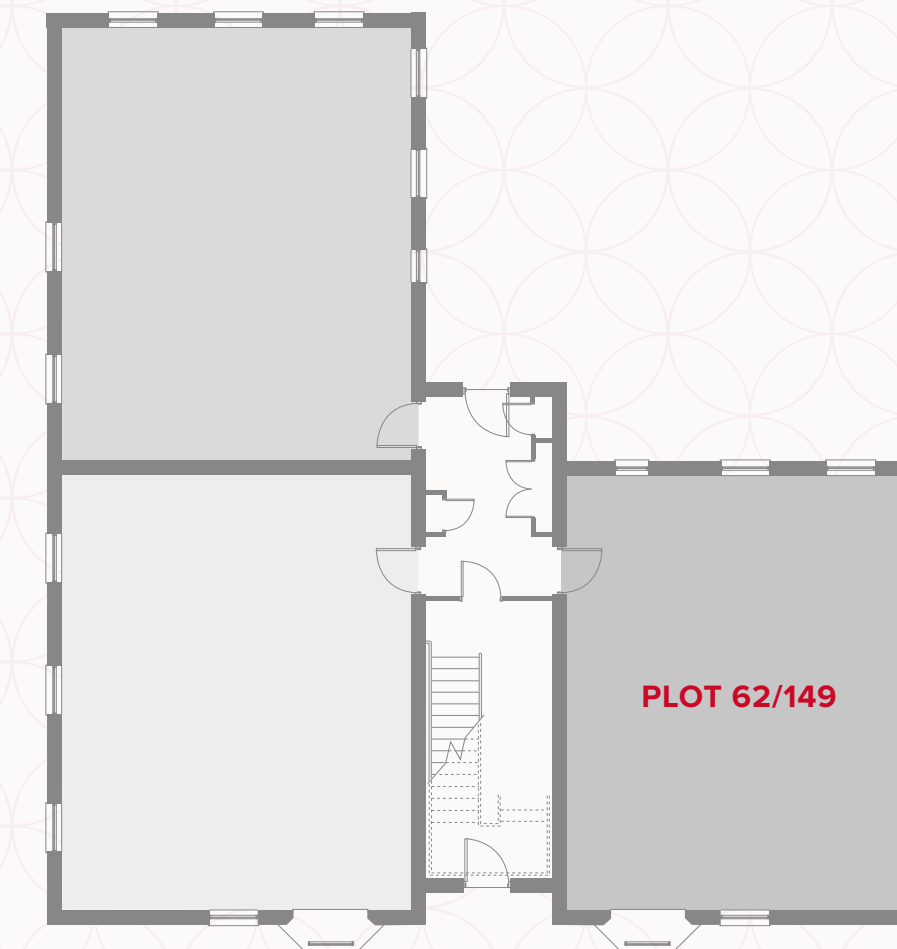
Customers should note this illustration is an example of the Swithland apartment. All dimensions indicated are approximate and the furniture layout is for illustrative purposes only. Homes may be 'handed' (mirror image) versions of the illustrations, and may be detached, semi-detached or terraced. Materials used may differ from plot to plot including render and roof tile colours. Detailed plans and specifications are available for inspection for each plot at our Sales Centre during working hours and customers must check their individual specifications prior to making a reservation. All wardrobes are subject to site specification. Please see Sales Consultant for further details.

# PLOT 62/149



# SWITHLAND GROUND FLOOR

1	Lounge	13'2" x 11'4"	4.03 x 3.47 m
2	Kitchen/ Dining	11'4" x 11'2"	3.47 x 3.41 m
3	Bedroom 1	14'1" x 10'2"	4.30 x 3.11 m
4	En-suite	10'0" x 4'6"	3.05 x 1.40 m
5	Bedroom 2	14'1" x 8'2"	4.30 x 2.50 m
6	Bathroom	7'1" x 6'3"	2.16 x 1.91 m

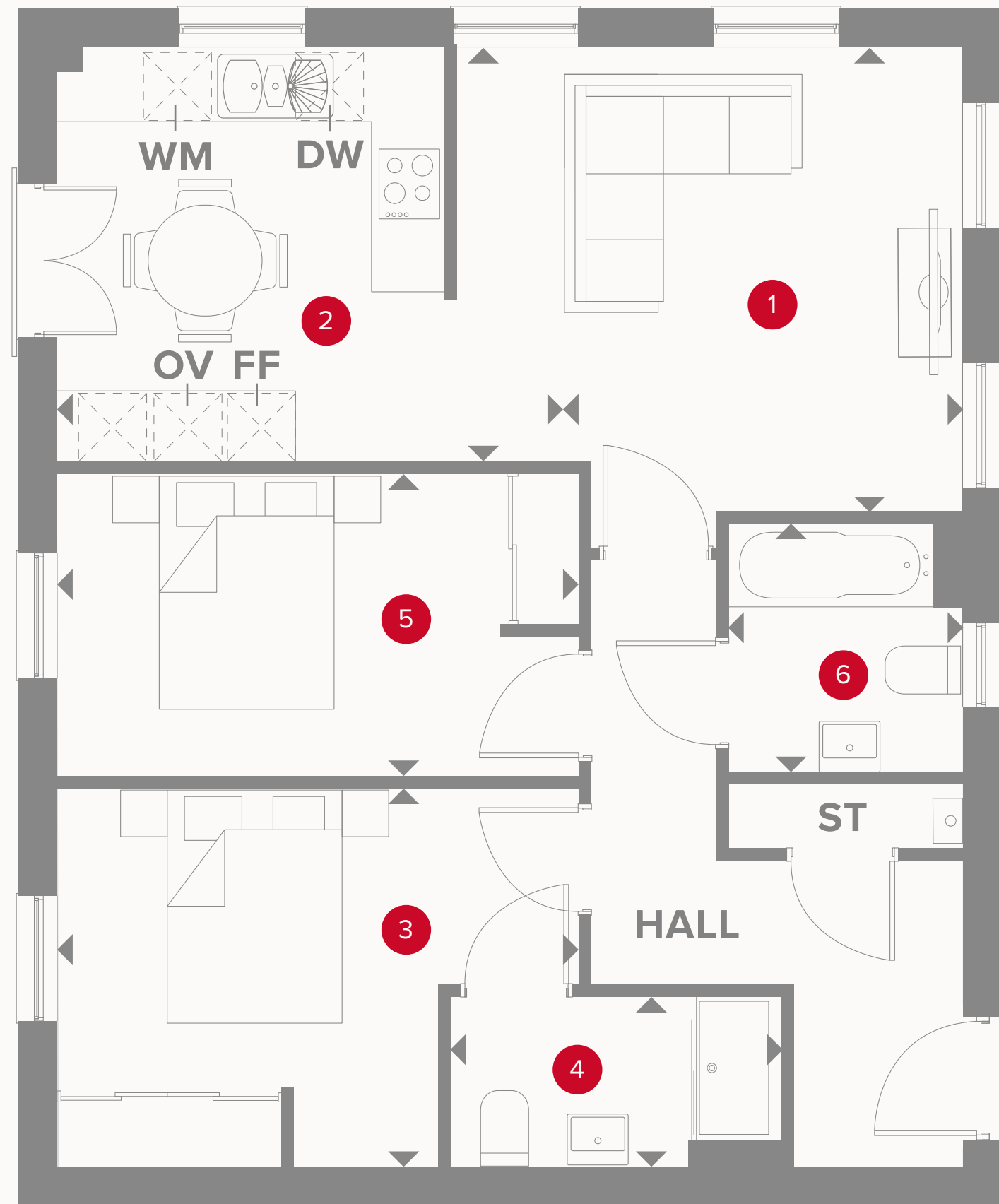


## KEY

	Hob		Dimensions start
<b>OV</b>	Oven	<b>ST</b>	Storage cupboard
<b>FF</b>	Fridge/freezer	<b>WM</b>	Washing machine space
<b>TD</b>	Tumble dryer space	<b>DW</b>	Dish washer space

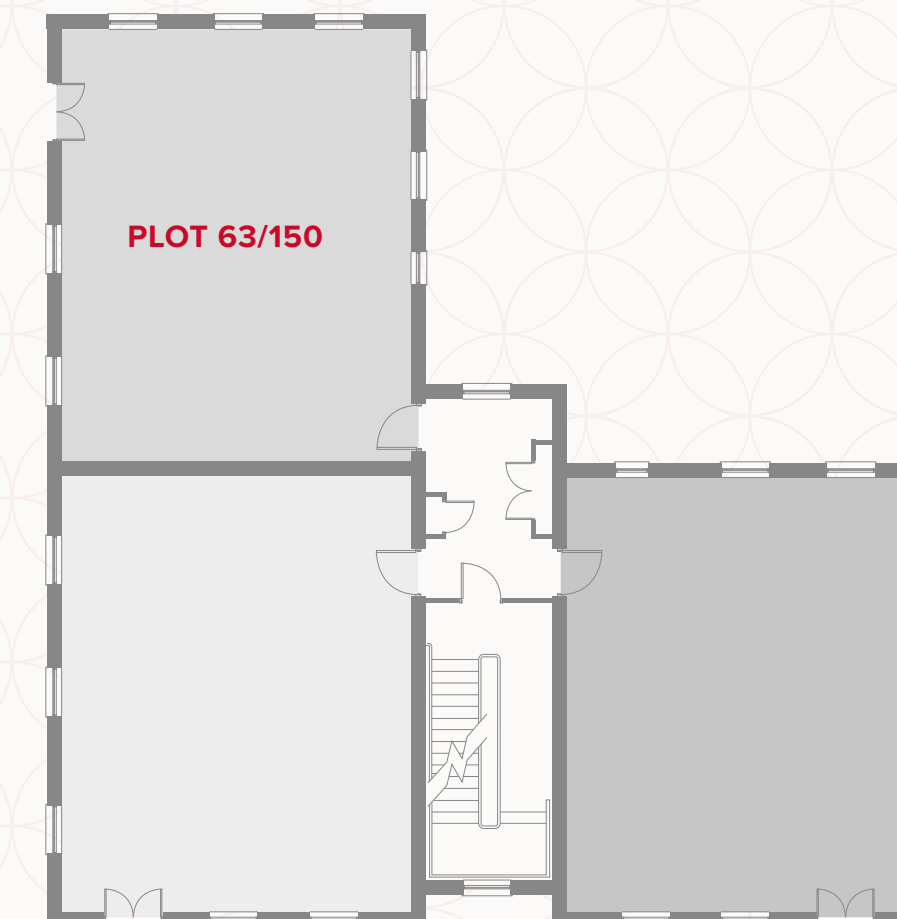
Customers should note this illustration is an example of the Swithland apartment. All dimensions indicated are approximate and the furniture layout is for illustrative purposes only. Homes may be 'handed' (mirror image) versions of the illustrations, and may be detached, semi-detached or terraced. Materials used may differ from plot to plot including render and roof tile colours. Detailed plans and specifications are available for inspection for each plot at our Sales Centre during working hours and customers must check their individual specifications prior to making a reservation. All wardrobes are subject to site specification. Please see Sales Consultant for further details.

# PLOT 63/150



# SWITHLAND FIRST FLOOR

1	Lounge	14'2" x 12'5"	4.32 x 3.82 m
2	Kitchen/ Dining	11'2" x 9'9"	3.41 x 3.03 m
3	Bedroom 1	14'1" x 10'2"	4.30 x 3.11 m
4	En-suite	9'0" x 4'6"	2.74 x 1.39 m
5	Bedroom 2	14'1" x 8'2"	4.30 x 2.50 m
6	Bathroom	6'8" x 6'3"	2.06 x 1.92 m

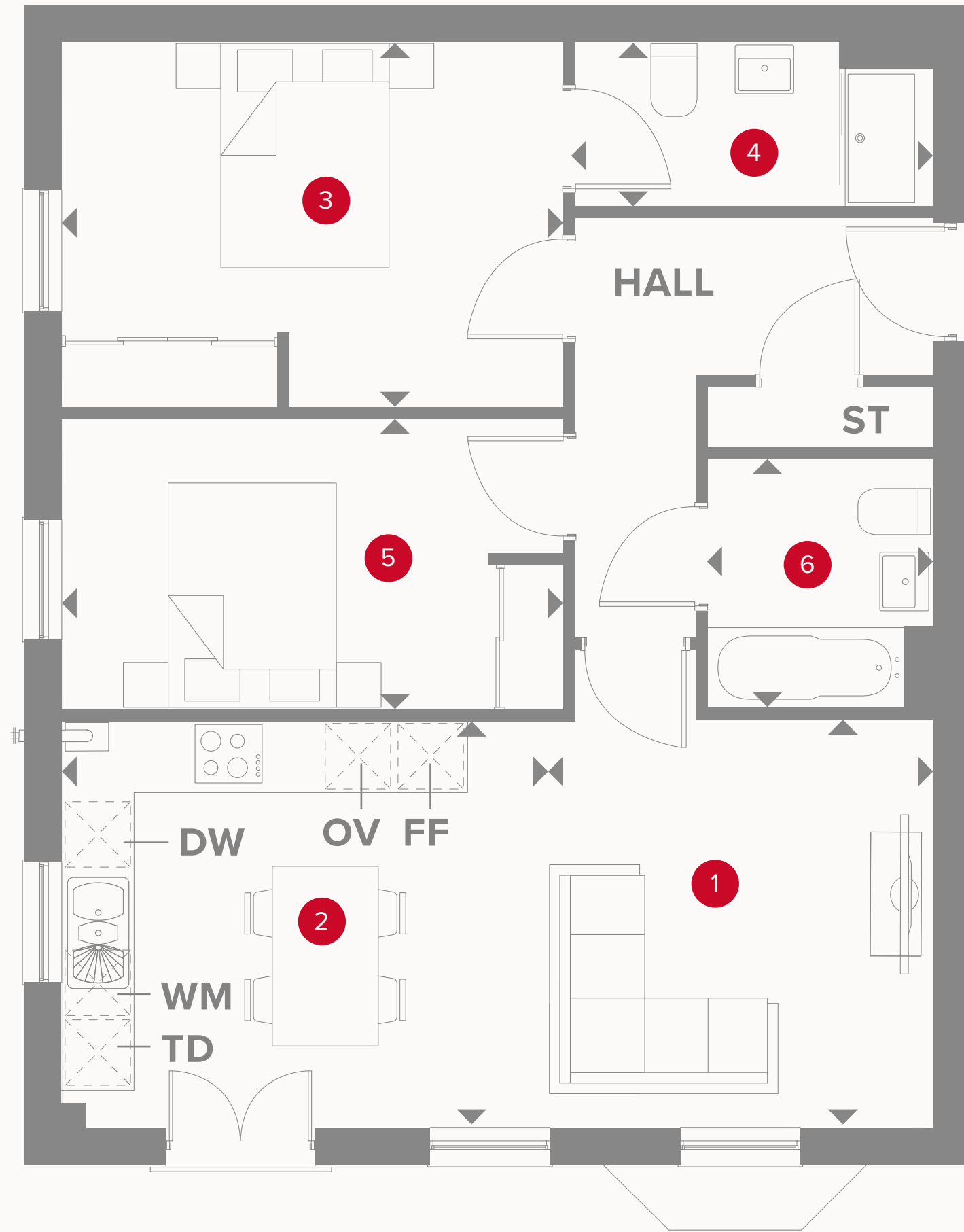


## KEY

	Hob		Dimensions start
<b>OV</b>	Oven	<b>ST</b>	Storage cupboard
<b>FF</b>	Fridge/freezer	<b>WM</b>	Washing machine space
<b>TD</b>	Tumble dryer space	<b>DW</b>	Dish washer space

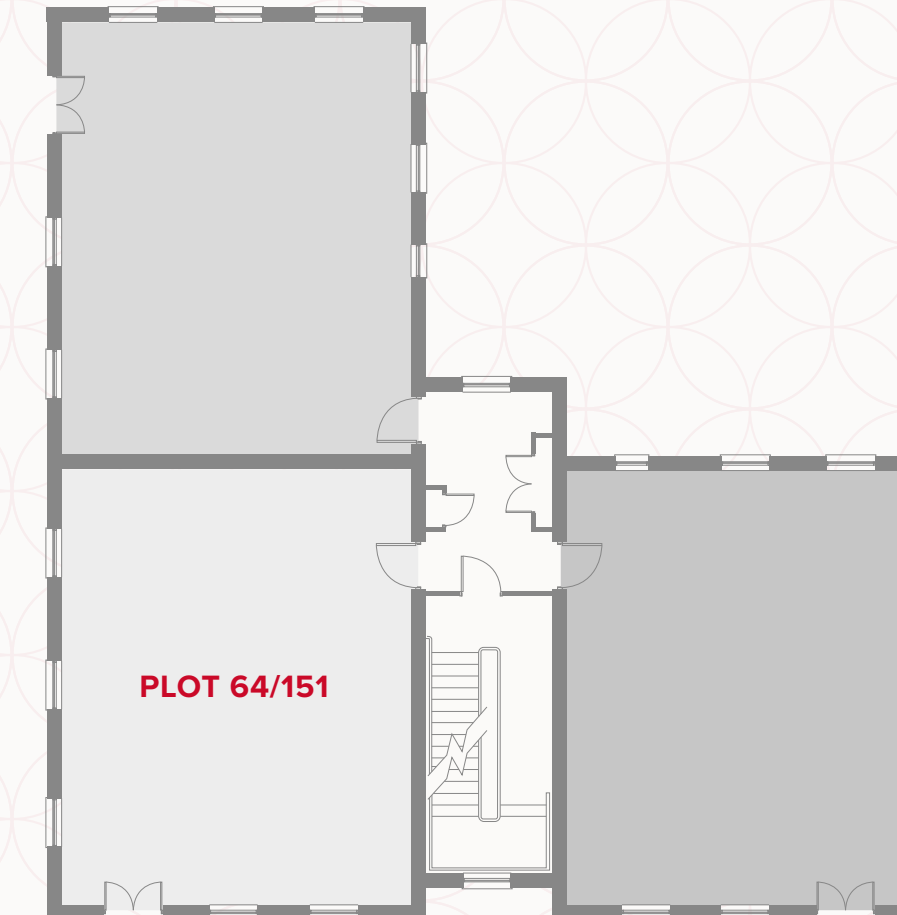
Customers should note this illustration is an example of the Swithland apartment. All dimensions indicated are approximate and the furniture layout is for illustrative purposes only. Homes may be 'handed' (mirror image) versions of the illustrations, and may be detached, semi-detached or terraced. Materials used may differ from plot to plot including render and roof tile colours. Detailed plans and specifications are available for inspection for each plot at our Sales Centre during working hours and customers must check their individual specifications prior to making a reservation. All wardrobes are subject to site specification. Please see Sales Consultant for further details.

# PLOT 64/151



# SWITHLAND FIRST FLOOR

1	Lounge	13'2" x 11'4"	4.03 x 3.47 m
2	Kitchen/ Dining	11'4" x 11'2"	3.47 x 3.41 m
3	Bedroom 1	14'1" x 10'2"	4.30 x 3.11 m
4	En-suite	10'0" x 4'6"	3.05 x 1.40 m
5	Bedroom 2	14'1" x 8'2"	4.30 x 2.50 m
6	Bathroom	7'1" x 6'3"	2.16 x 1.91 m

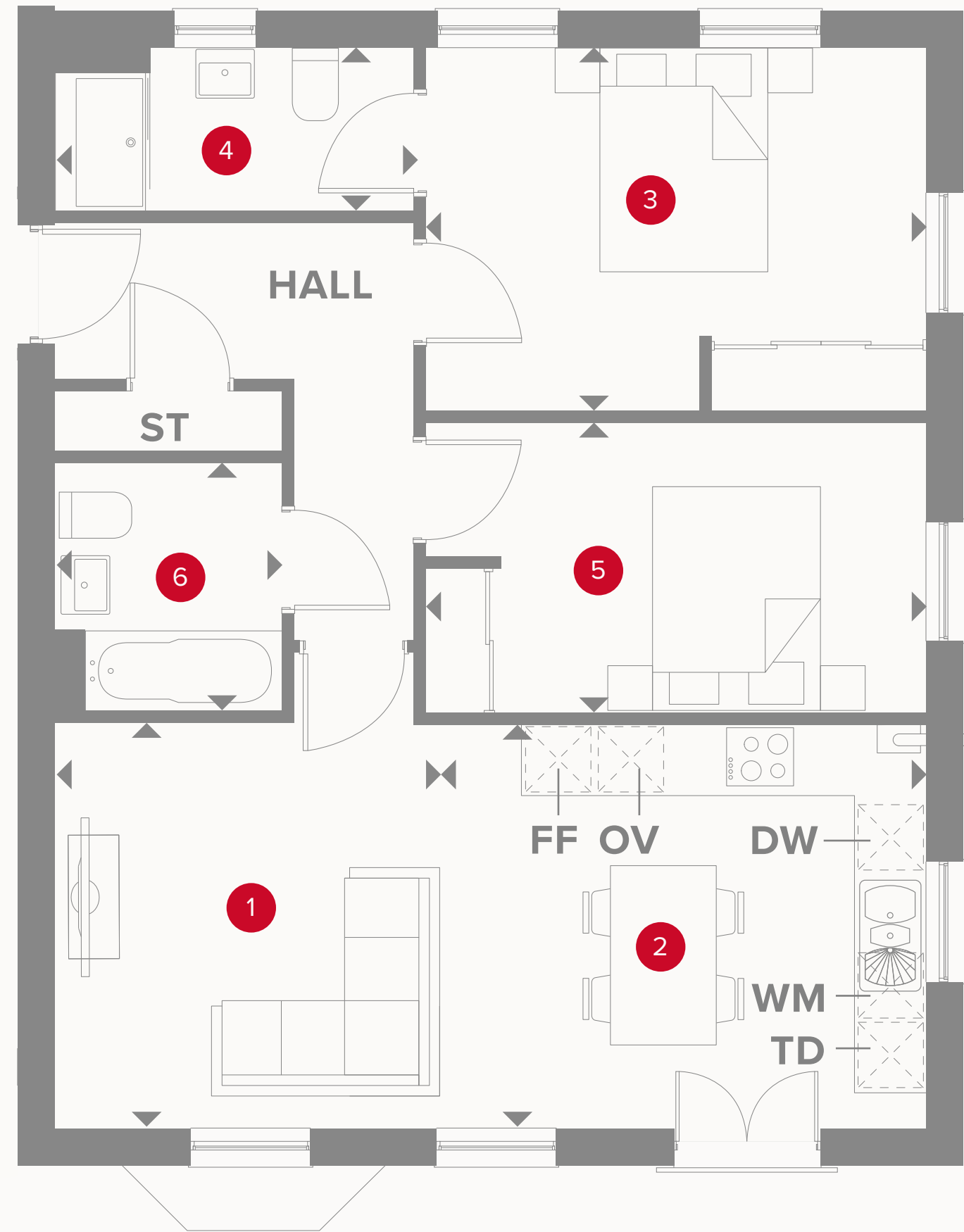


## KEY

	Hob		Dimensions start
<b>OV</b>	Oven	<b>ST</b>	Storage cupboard
<b>FF</b>	Fridge/freezer	<b>WM</b>	Washing machine space
<b>TD</b>	Tumble dryer space	<b>DW</b>	Dish washer space

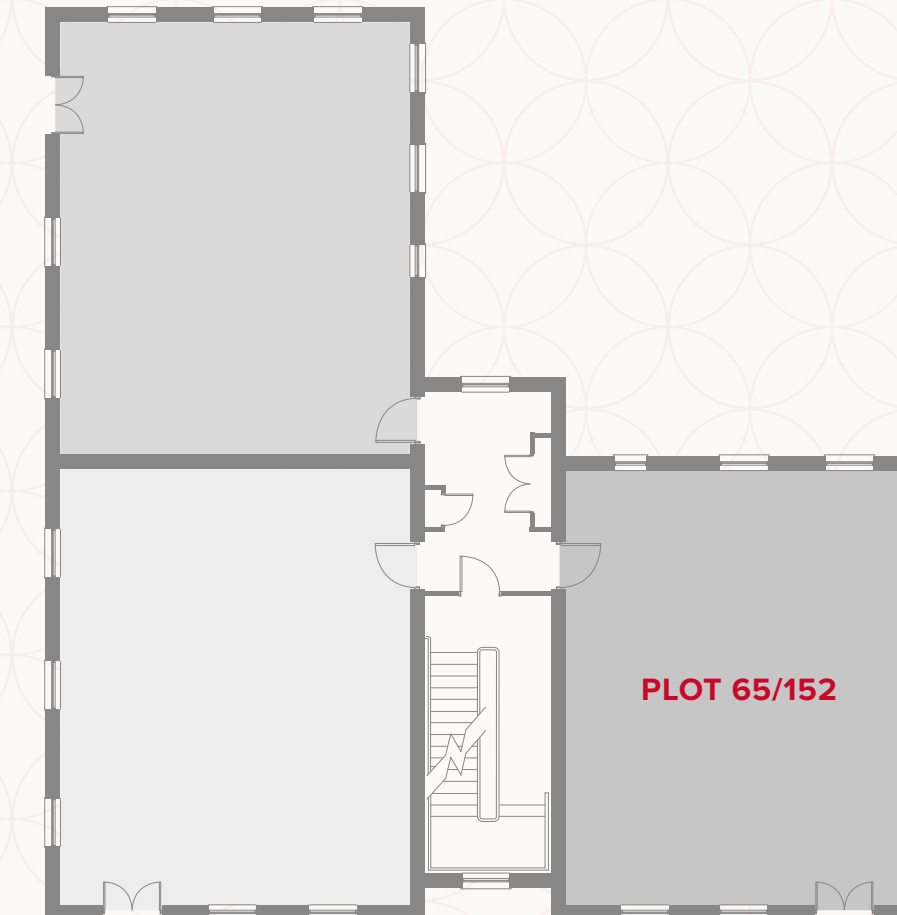
Customers should note this illustration is an example of the Swithland apartment. All dimensions indicated are approximate and the furniture layout is for illustrative purposes only. Homes may be 'handed' (mirror image) versions of the illustrations, and may be detached, semi-detached or terraced. Materials used may differ from plot to plot including render and roof tile colours. Detailed plans and specifications are available for inspection for each plot at our Sales Centre during working hours and customers must check their individual specifications prior to making a reservation. All wardrobes are subject to site specification. Please see Sales Consultant for further details.

# PLOT 65/152



# SWITHLAND FIRST FLOOR

1	Lounge	13'2" x 11'4"	4.03 x 3.47 m
2	Kitchen/ Dining	11'4" x 11'2"	3.47 x 3.41 m
3	Bedroom 1	14'1" x 10'2"	4.30 x 3.11 m
4	En-suite	10'0" x 4'6"	3.05 x 1.40 m
5	Bedroom 2	14'1" x 8'2"	4.30 x 2.50 m
6	Bathroom	7'1" x 6'3"	2.16 x 1.91 m

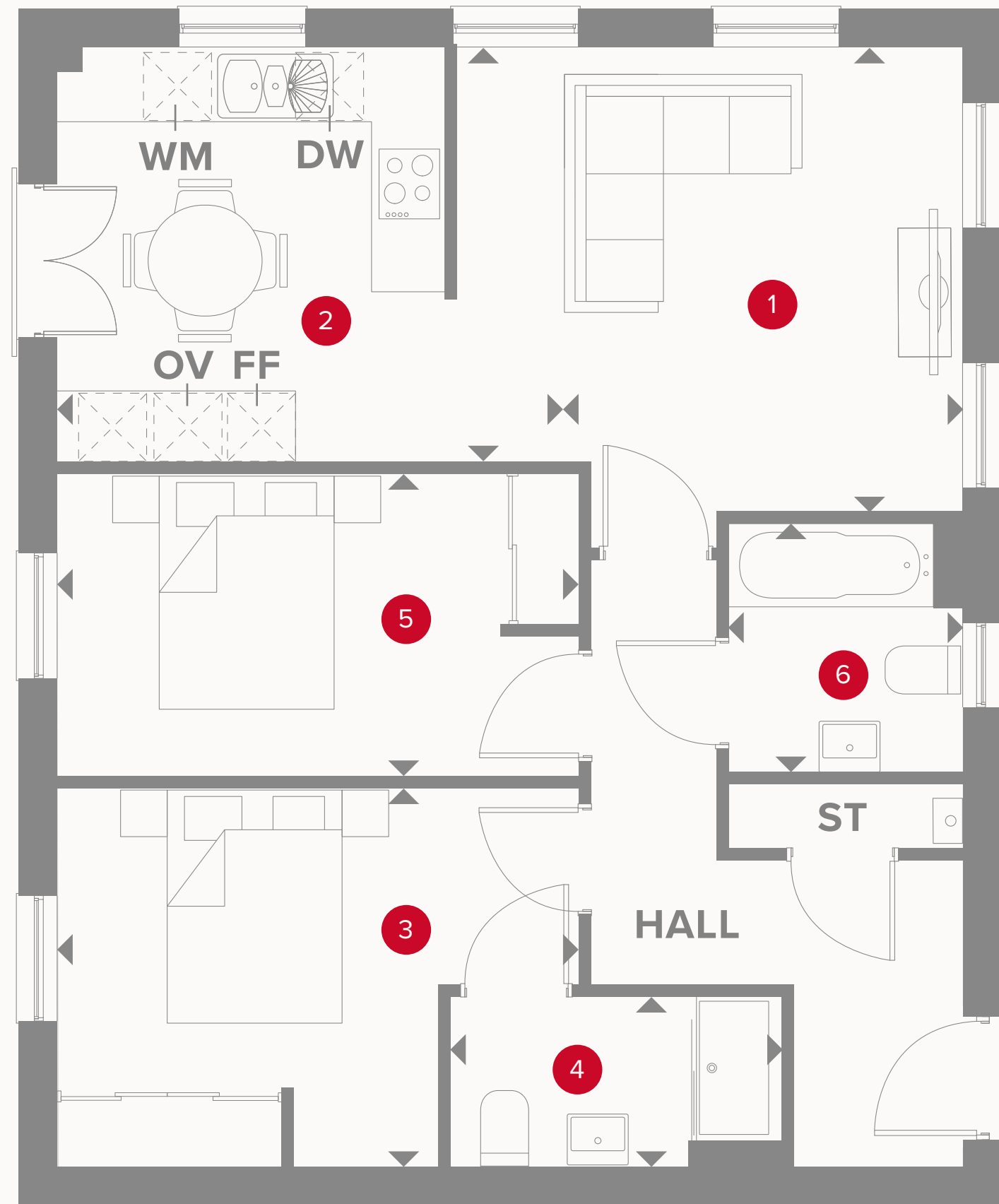


## KEY

	Hob		Dimensions start
<b>OV</b>	Oven	<b>ST</b>	Storage cupboard
<b>FF</b>	Fridge/freezer	<b>WM</b>	Washing machine space
<b>TD</b>	Tumble dryer space	<b>DW</b>	Dish washer space

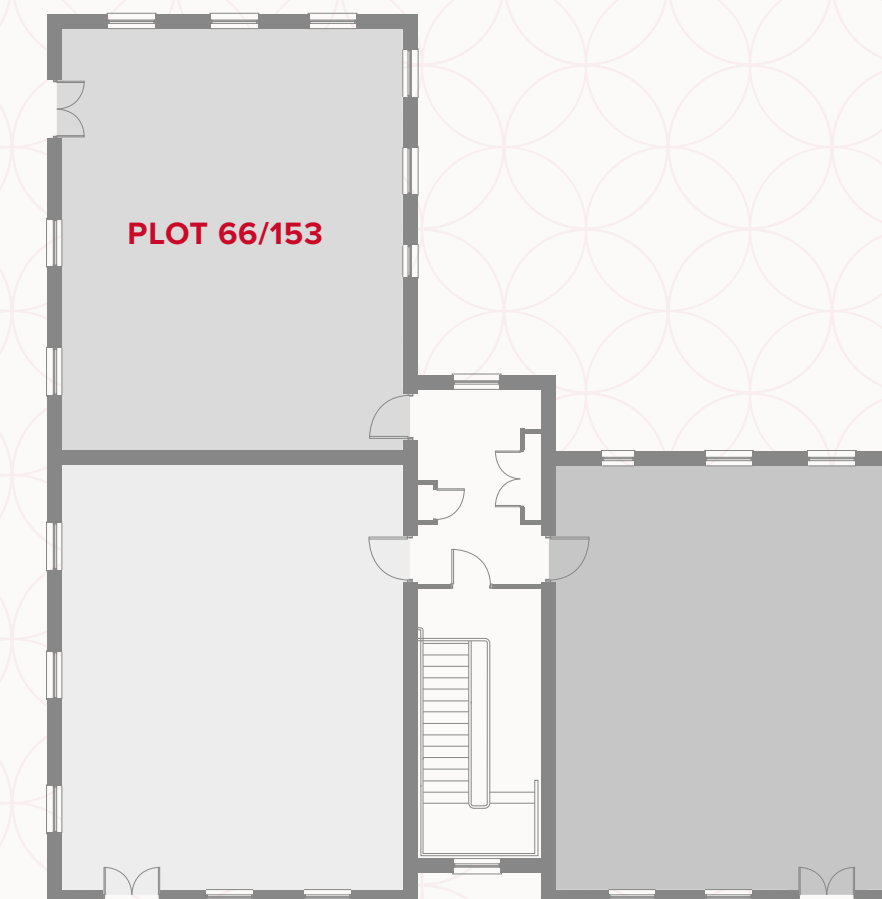
Customers should note this illustration is an example of the Swithland apartment. All dimensions indicated are approximate and the furniture layout is for illustrative purposes only. Homes may be 'handed' (mirror image) versions of the illustrations, and may be detached, semi-detached or terraced. Materials used may differ from plot to plot including render and roof tile colours. Detailed plans and specifications are available for inspection for each plot at our Sales Centre during working hours and customers must check their individual specifications prior to making a reservation. All wardrobes are subject to site specification. Please see Sales Consultant for further details.

# PLOT 66/153



# SWITHLAND SECOND FLOOR

1	Lounge	14'2" x 12'5"	4.32 x 3.82 m
2	Kitchen/ Dining	11'2" x 9'9"	3.41 x 3.03 m
3	Bedroom 1	14'1" x 10'2"	4.30 x 3.11 m
4	En-suite	9'0" x 4'6"	2.74 x 1.39 m
5	Bedroom 2	14'1" x 8'2"	4.30 x 2.50 m
6	Bathroom	6'8" x 6'3"	2.06 x 1.92 m



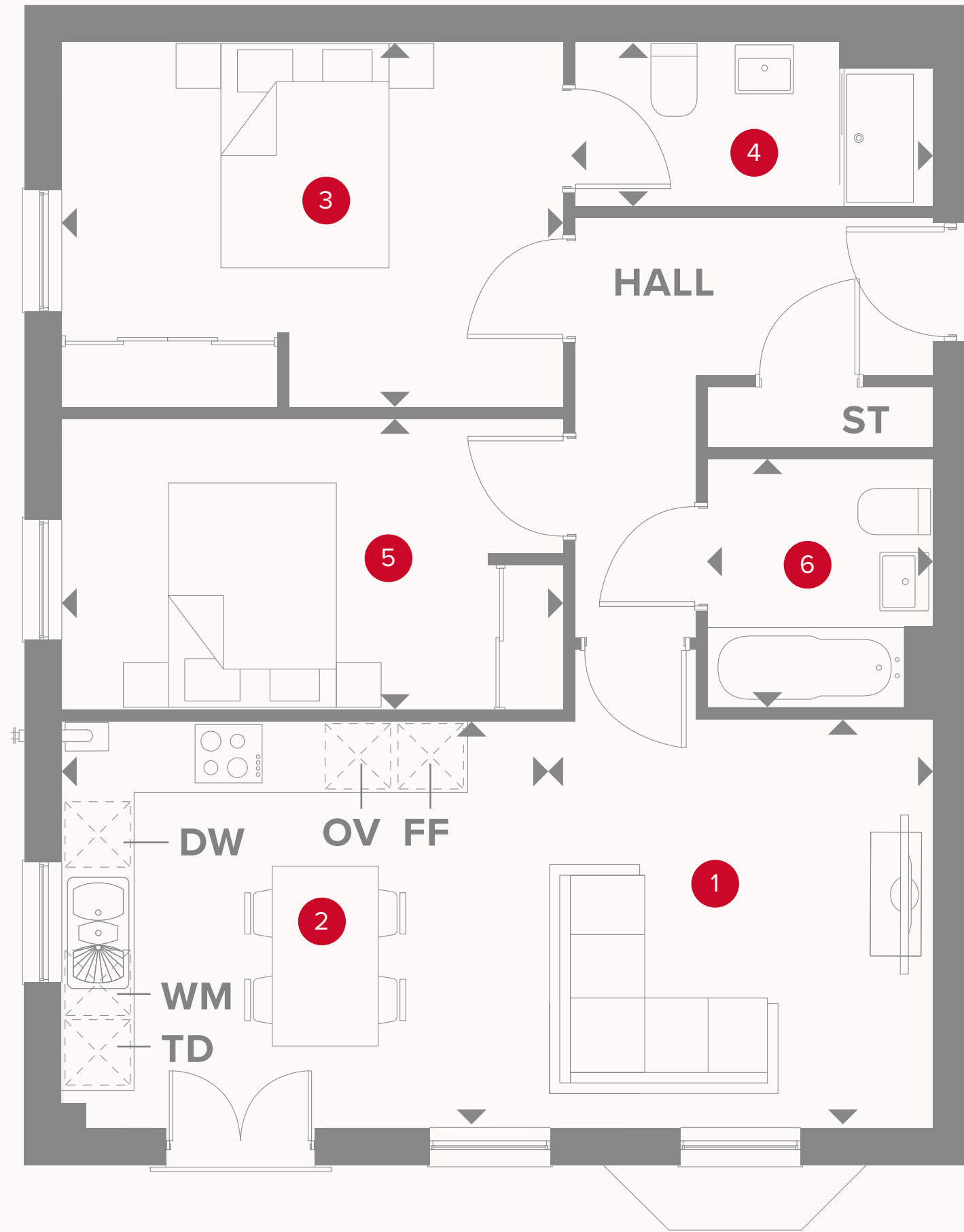
## KEY

	Hob		Dimensions start
<b>OV</b>	Oven	<b>ST</b>	Storage cupboard
<b>FF</b>	Fridge/freezer	<b>WM</b>	Washing machine space
<b>TD</b>	Tumble dryer space	<b>DW</b>	Dish washer space

Customers should note this illustration is an example of the Swithland apartment. All dimensions indicated are approximate and the furniture layout is for illustrative purposes only. Homes may be 'handed' (mirror image) versions of the illustrations, and may be detached, semi-detached or terraced. Materials used may differ from plot to plot including render and roof tile colours. Detailed plans and specifications are available for inspection for each plot at our Sales Centre during working hours and customers must check their individual specifications prior to making a reservation. All wardrobes are subject to site specification. Please see Sales Consultant for further details.

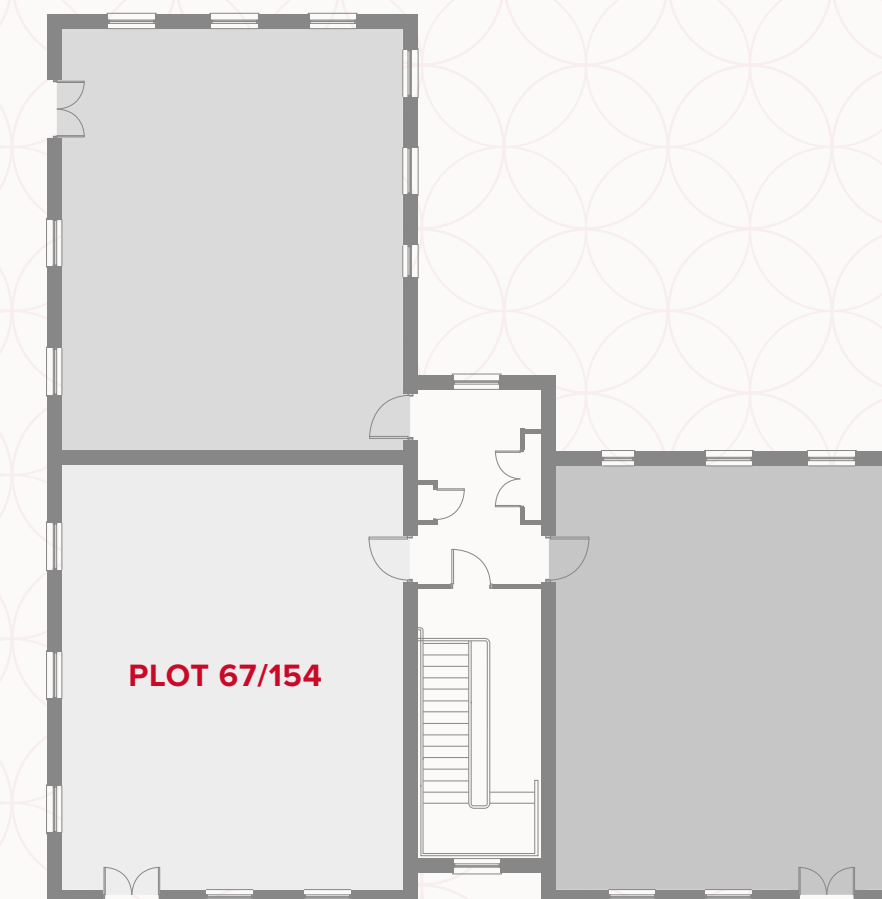


# PLOT 67/154



# SWITHLAND SECOND FLOOR

1	Lounge	13'2" x 11'4"	4.03 x 3.47 m
2	Kitchen/ Dining	11'4" x 11'2"	3.47 x 3.41 m
3	Bedroom 1	14'1" x 10'2"	4.30 x 3.11 m
4	En-suite	10'0" x 4'6"	3.05 x 1.40 m
5	Bedroom 2	14'1" x 8'2"	4.30 x 2.50 m
6	Bathroom	7'1" x 6'3"	2.16 x 1.91 m

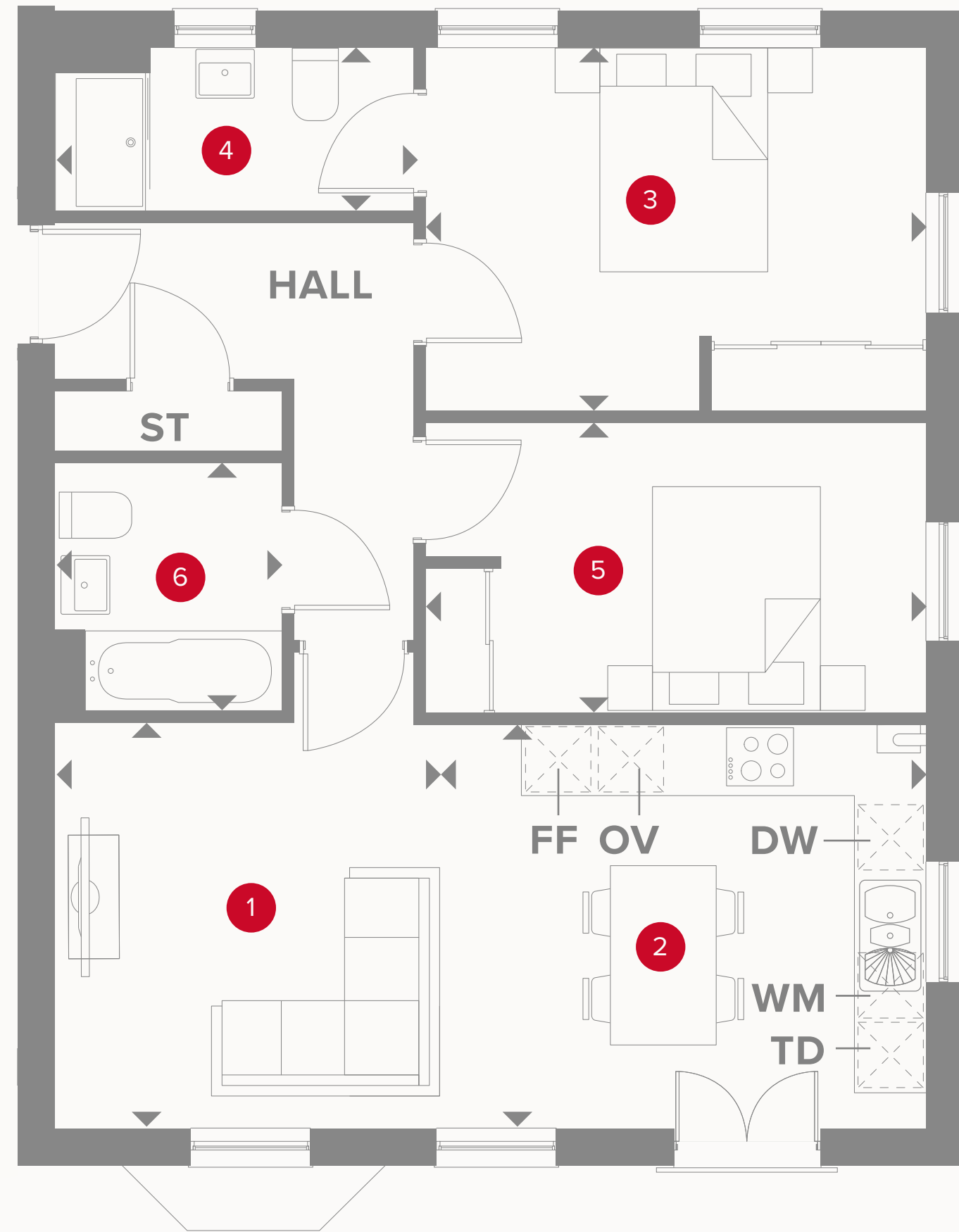


## KEY

	Hob		Dimensions start
<b>OV</b>	Oven	<b>ST</b>	Storage cupboard
<b>FF</b>	Fridge/freezer	<b>WM</b>	Washing machine space
<b>TD</b>	Tumble dryer space	<b>DW</b>	Dish washer space

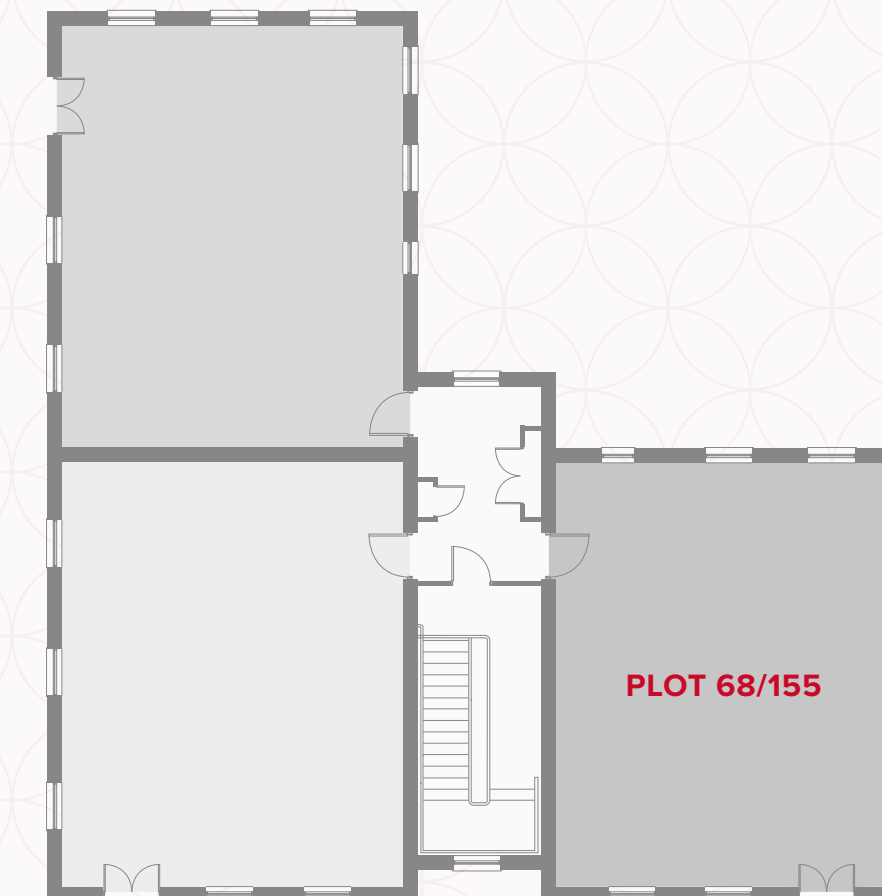
Customers should note this illustration is an example of the Swithland apartment. All dimensions indicated are approximate and the furniture layout is for illustrative purposes only. Homes may be 'handed' (mirror image) versions of the illustrations, and may be detached, semi-detached or terraced. Materials used may differ from plot to plot including render and roof tile colours. Detailed plans and specifications are available for inspection for each plot at our Sales Centre during working hours and customers must check their individual specifications prior to making a reservation. All wardrobes are subject to site specification. Please see Sales Consultant for further details.

# PLOT 68/155



# SWITHLAND SECOND FLOOR

1	Lounge	13'2" x 11'4"	4.03 x 3.47 m
2	Kitchen/ Dining	11'4" x 11'2"	3.47 x 3.41 m
3	Bedroom 1	14'1" x 10'2"	4.30 x 3.11 m
4	En-suite	10'0" x 4'6"	3.05 x 1.40 m
5	Bedroom 2	14'1" x 8'2"	4.30 x 2.50 m
6	Bathroom	7'1" x 6'3"	2.16 x 1.91 m



## KEY

	Hob		Dimensions start
<b>OV</b>	Oven	<b>ST</b>	Storage cupboard
<b>FF</b>	Fridge/freezer	<b>WM</b>	Washing machine space
<b>TD</b>	Tumble dryer space	<b>DW</b>	Dish washer space

Customers should note this illustration is an example of the Swithland apartment. All dimensions indicated are approximate and the furniture layout is for illustrative purposes only. Homes may be 'handed' (mirror image) versions of the illustrations, and may be detached, semi-detached or terraced. Materials used may differ from plot to plot including render and roof tile colours. Detailed plans and specifications are available for inspection for each plot at our Sales Centre during working hours and customers must check their individual specifications prior to making a reservation. All wardrobes are subject to site specification. Please see Sales Consultant for further details.