



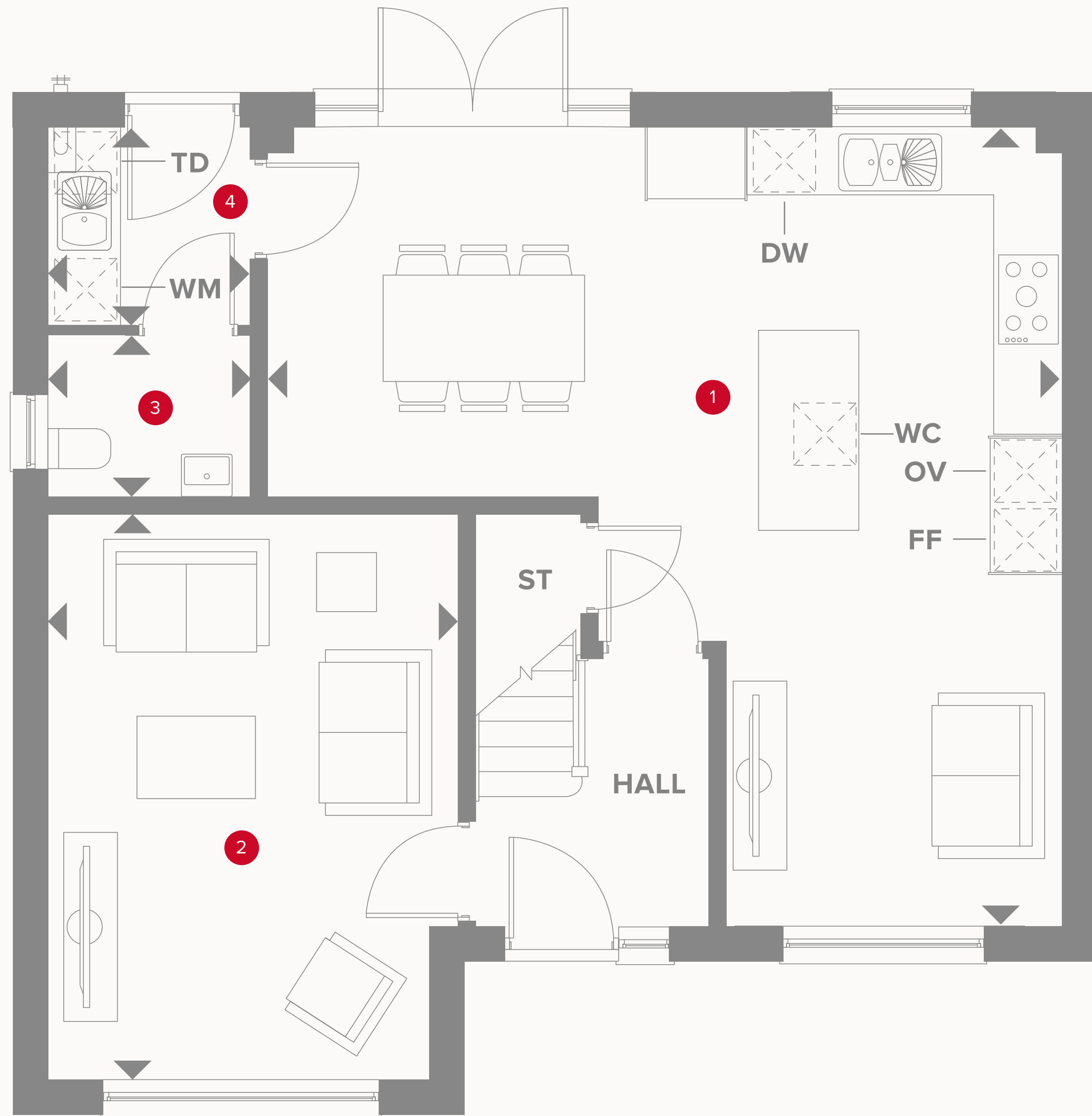
HERITAGE

- REDROW -

THE HIGHGATE

FIVE BEDROOM HOME

 **REDROW**







THE HIGHGATE GROUND FLOOR

1	Kitchen/ Dining/Family	23'2" x 23'4"	7.07 x 7.11m
2	Lounge	11'11" x 16'5"	3.65 x 5.02m
3	Cloaks	5'10" x 4'9"	1.80 x 1.45m
4	Laundry	5'10" x 5'8"	1.80 x 1.75m

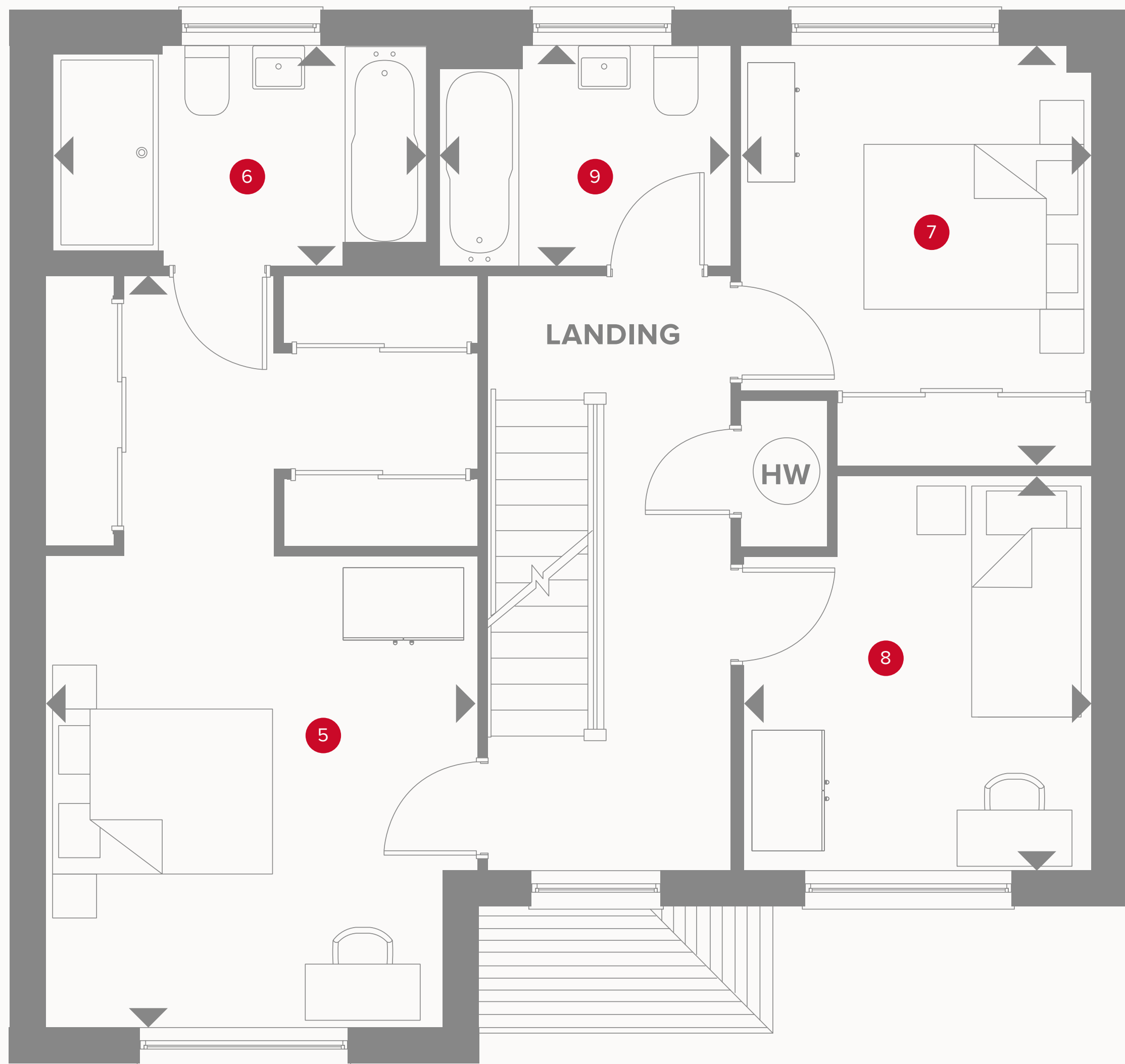


KEY

 Hob
 OV Oven
 FF Fridge/freezer
 DW Dishwasher space

 Dimensions start
 ST Storage cupboard
 WM Washing machine space
 TD Tumble dryer space

 WC Wine cooler space



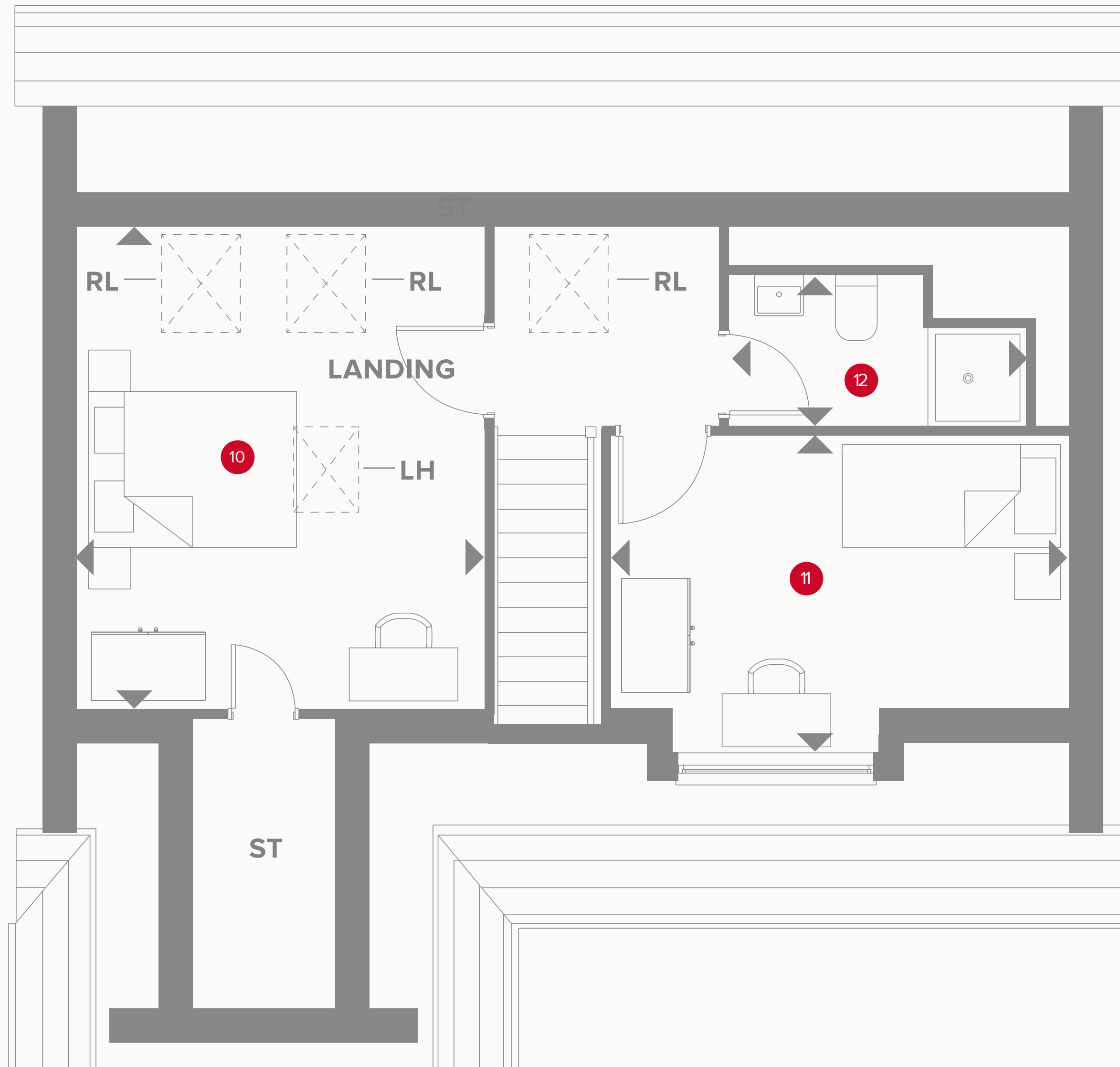
THE HIGHGATE FIRST FLOOR

5	Bedroom 1	12'2" x 21'3"	3.71 x 6.48m
6	En-suite	10'6" x 6'2"	3.22 x 1.89m
7	Bedroom 2	9'11" x 11'10"	3.03 x 3.62m
8	Bedroom 3	9'10" x 11'2"	3.00 x 3.40m
9	Bathroom	8'2" x 6'2"	2.51 x 1.89m



KEY

- ◀ Dimensions start
- HW Hot water storage



Plots 9, 10 & 93 are handed

THE HIGHGATE SECOND FLOOR

10	Bedroom 4	12'2" x 14'5"	3.71 x 4.40m
11	Bedroom 5	13'7" x 8'2"	4.15 x 2.50m
12	Shower Room	8'11" x 4'6"	2.72 x 1.37m



**CONSUMER
CODE FOR
HOME BUILDERS**
www.consumercode.co.uk

Customers should note this illustration is an example of the Highgate house type. All dimensions indicated are approximate and the furniture layout is for illustrative purposes only. Homes may be "handed" (mirror image) versions of the illustrations, and may be detached, semi-detached or terraced. Materials used may differ from plot to plot including render and roof tile colours. Detailed plans and specifications are available for inspection for each plot at our Sales Centre during working hours and customers must check their individual specifications prior to making a reservation. Some images shown include upgrade items which are not included as standard with the housetype.

KEY

- ◀ Dimensions start
- LH Loft hatch
- RL Roof light