



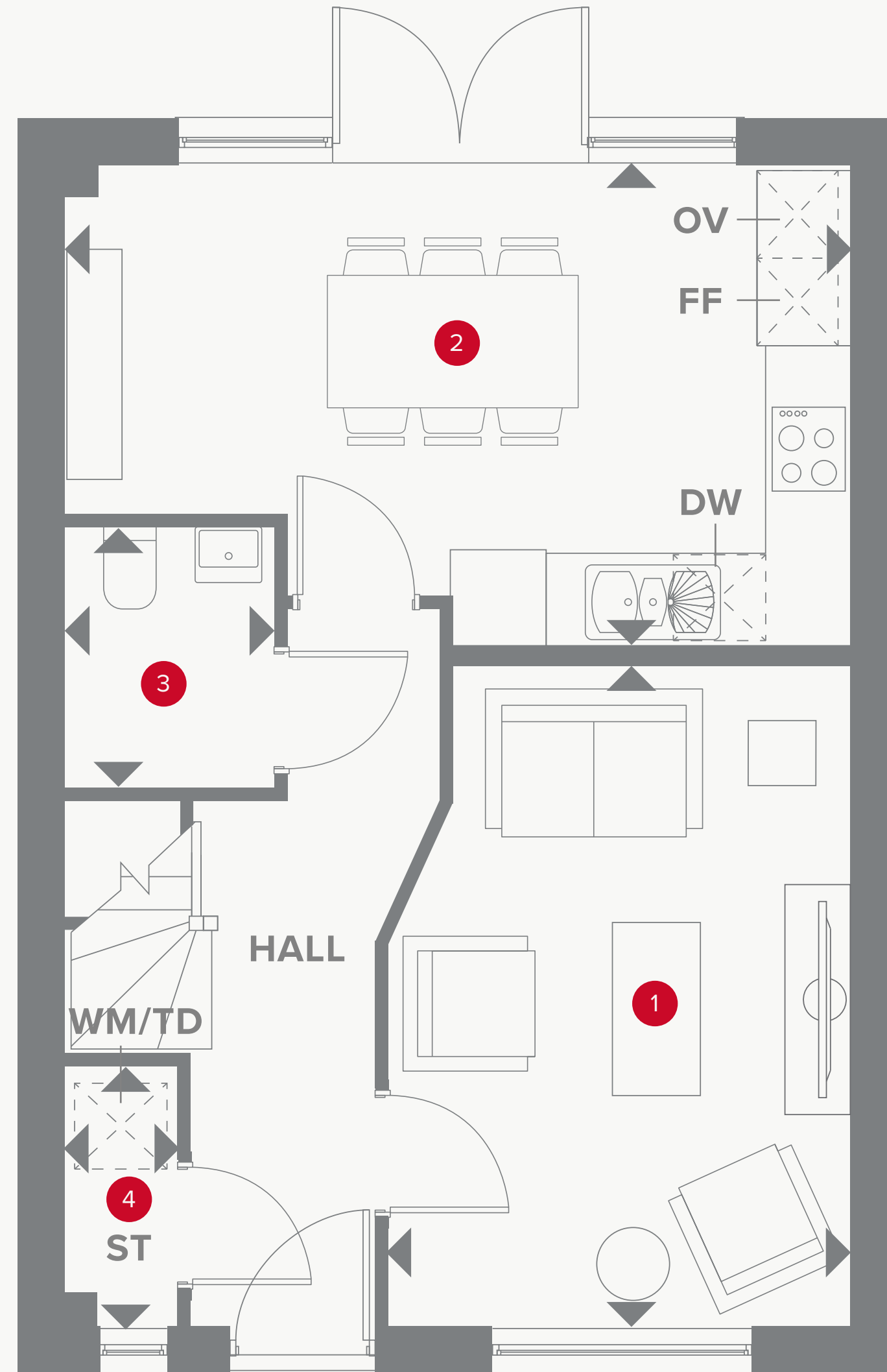
HERITAGE

- REDROW -

THE LINCOLN

THREE BEDROOM HOME

 **REDROW**



Plots 3, 17, 22, 24, 48 & 49 are handed


THE LINCOLN GROUND FLOOR

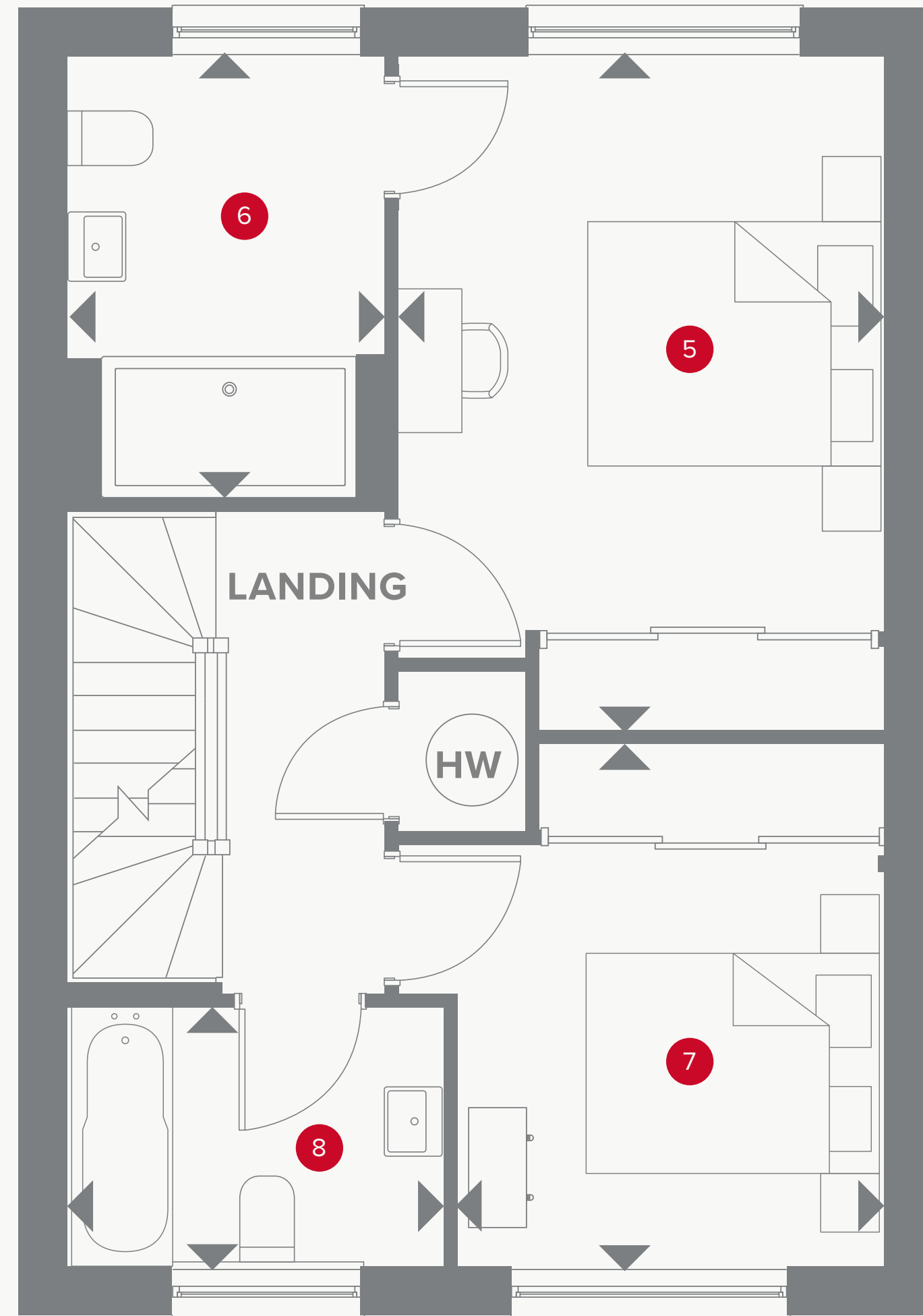
1	Lounge	10'5" x 14'11"	3.19 x 4.55m
2	Kitchen/ Dining	17'9" x 10'10"	5.43 x 3.31m
3	Cloaks	4'9" x 5'11"	1.45 x 1.80m
4	Laundry	2'6" x 5'10"	0.77 x 1.78m



KEY

 Hob
OV Oven
FF Fridge/freezer
DW Dishwasher space

 Dimensions start
ST Storage cupboard
WM Washing machine space
TD Tumble dryer space



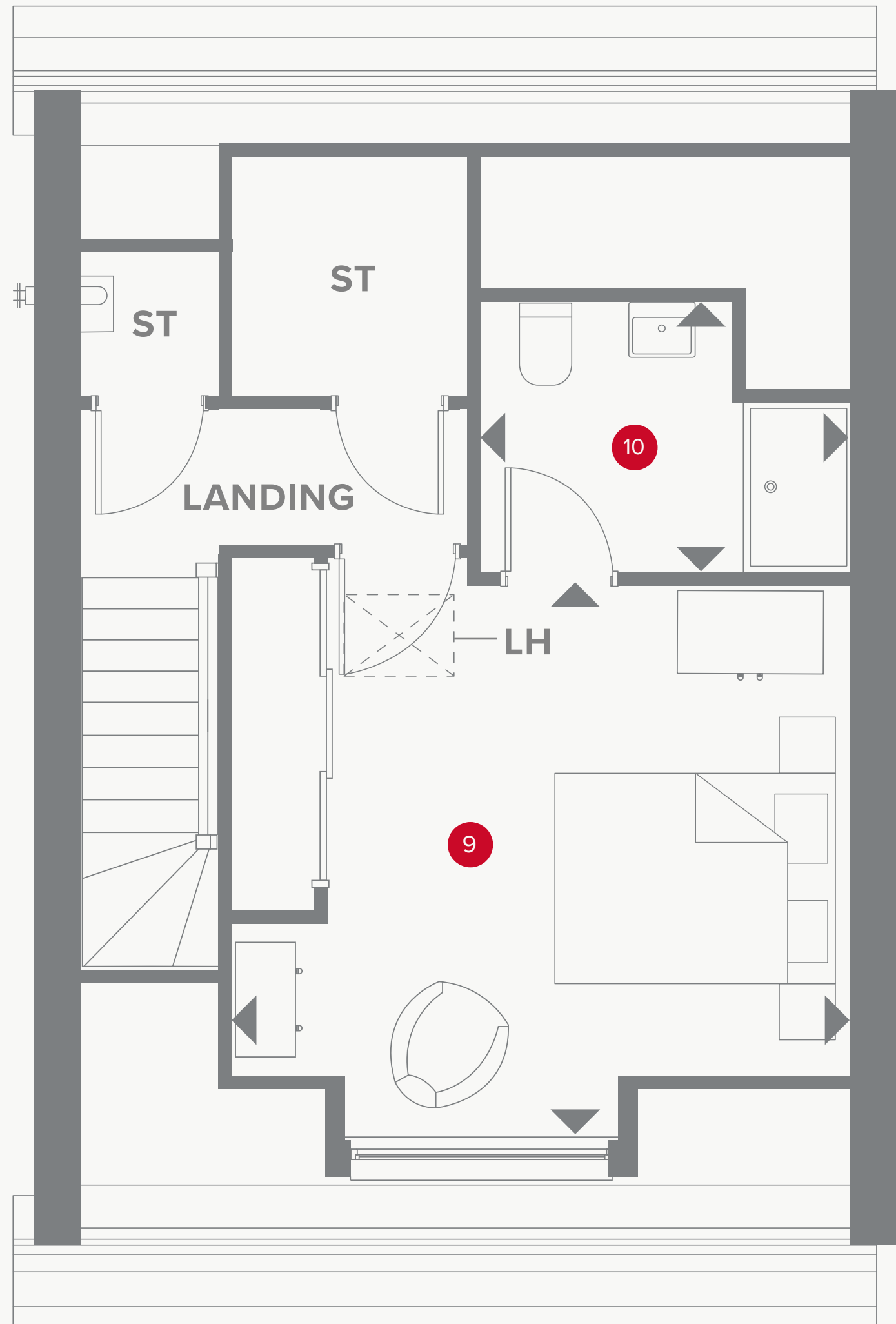
THE LINCOLN FIRST FLOOR

5	Bedroom 1	10'7" x 14'8"	3.24 x 4.48m
6	En-suite	6'10" x 9'7"	2.10 x 2.93m
7	Bedroom 3	9'3" x 11'3"	2.84 x 3.44m
8	Bathroom	8'2" x 5'7"	2.49 x 1.70m



KEY

- ◀ Dimensions start
- HW** Hot water storage



THE LINCOLN SECOND FLOOR

9	Bedroom 2	14'2" x 12'8"	4.33 x 3.88m
10	En-suite	8'6" x 6'3"	2.59 x 1.90m



**CONSUMER
CODE FOR
HOME BUILDERS**
www.consumercode.co.uk

Customers should note this illustration is an example of the Lincoln house type. All dimensions indicated are approximate and the furniture layout is for illustrative purposes only. Homes may be "handed" (mirror image) versions of the illustrations, and may be detached, semi-detached or terraced. Materials used may differ from plot to plot including render and roof tile colours. Detailed plans and specifications are available for inspection for each plot at our Sales Centre during working hours and customers must check their individual specifications prior to making a reservation. Some images shown include upgrade items which are not included as standard with the housetype.

KEY
◀ Dimensions start
LH Loft hatch

Plots 3, 17, 22, 24, 48 & 49 are handed