



HERITAGE

- REDROW -

THE CAMBRIDGE

FOUR BEDROOM DETACHED HOME

 **REDROW**



HERITAGE

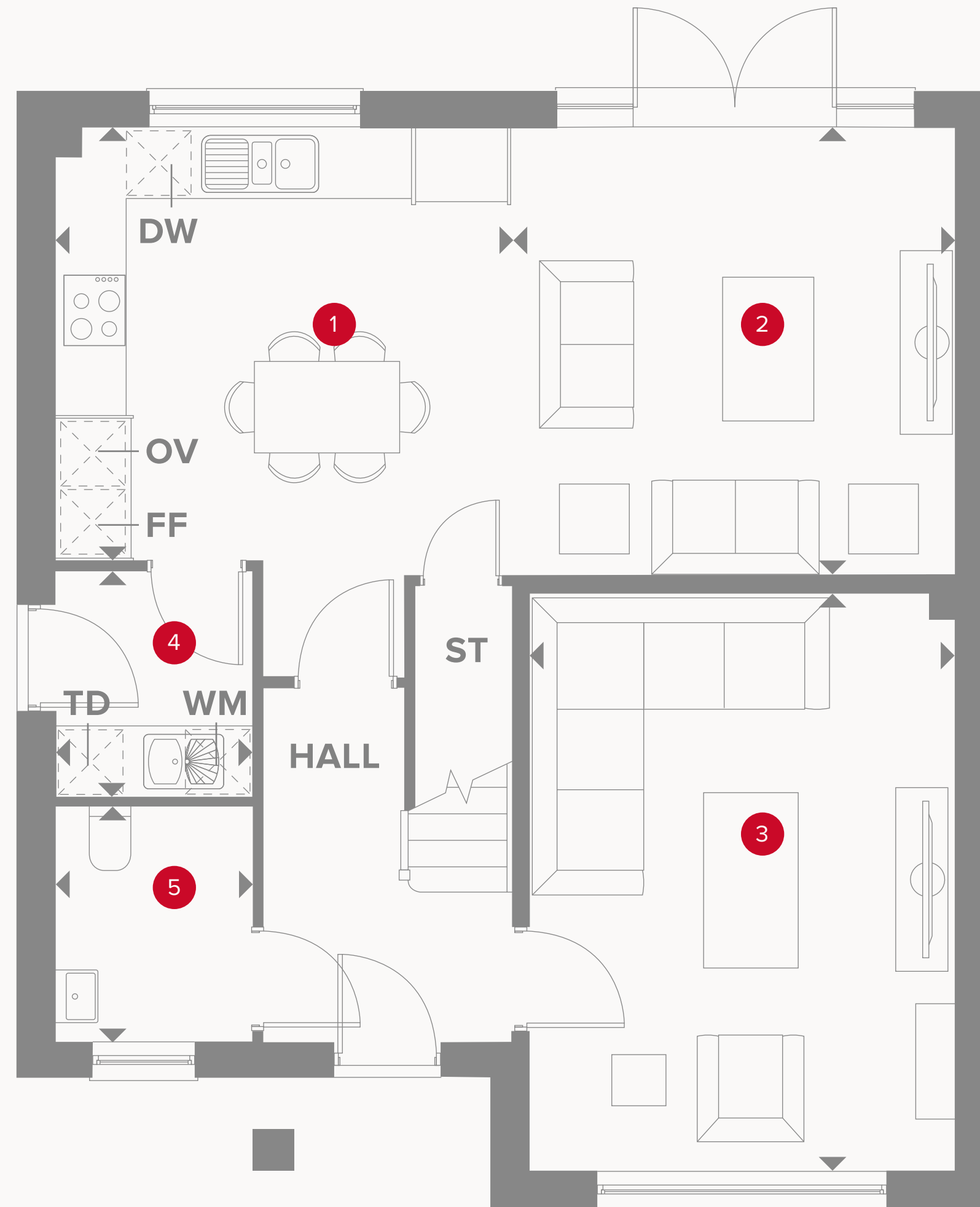
- REDROW -

THE CAMBRIDGE

FOUR BEDROOM DETACHED HOME



THE CAMBRIDGE GROUND FLOOR



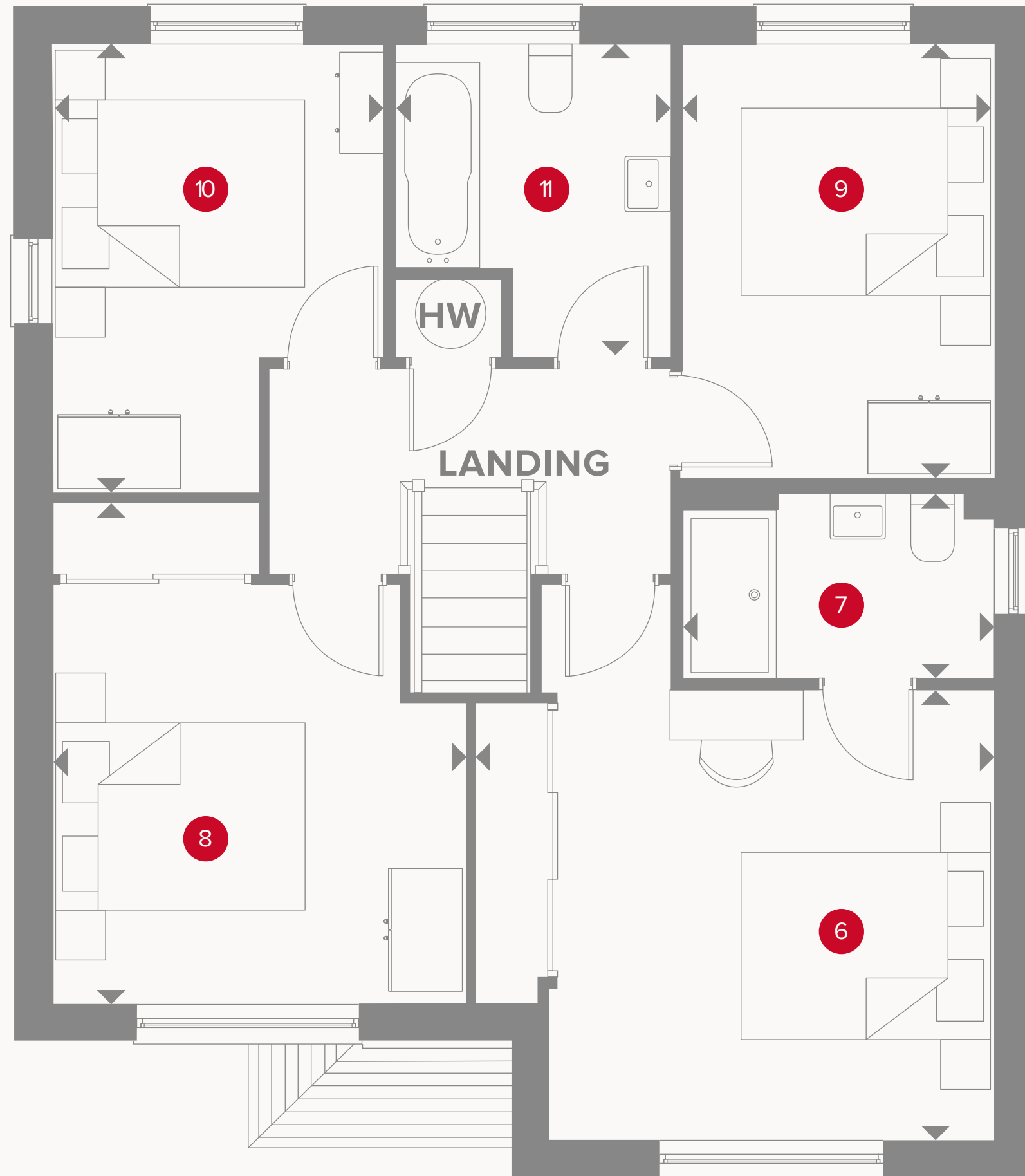
1	Kitchen/Dining	12'9" x 12'1"	3.90 x 3.69m
2	Family	12'4" x 12'6"	3.78 x 3.82m
3	Lounge	11'10" x 16'2"	3.62 x 4.94m
4	Utility	5'5" x 6'4"	1.66 x 1.93m
5	Cloaks	5'5" x 6'6"	1.66 x 1.99m



KEY

	Hob		Dimensions start
OV	Oven	ST	Storage cupboard
FF	Fridge/freezer	WM	Washing machine space
DW	Dishwasher space	TD	Tumble dryer space

THE CAMBRIDGE FIRST FLOOR



6	Bedroom 1	13'10" x 12'0"	4.22 x 3.67m
7	En-suite	8'4" x 4'11"	2.55 x 1.50m
8	Bedroom 2	11'0" x 13'3"	3.37 x 4.06m
9	Bedroom 3	8'4" x 11'8"	2.55 x 3.56m
10	Bedroom 4	8'10" x 11'10"	2.70 x 3.63m
11	Bathroom	7'4" x 8'4"	2.24 x 2.54m



**CONSUMER
CODE FOR
HOME BUILDERS**
www.consumercode.co.uk

Customers should note this illustration is an example of the Xxxxxxx house type. All dimensions indicated are approximate and the furniture layout is for illustrative purposes only. Homes may be "handed" (mirror image) versions of the illustrations, and may be detached, semi-detached or terraced. Materials used may differ from plot to plot including render and roof tile colours. Detailed plans and specifications are available for inspection for each plot at our Sales Centre during working hours and customers must check their individual specifications prior to making a reservation. Computer generated images are for indicative purposes only.

KEY

- ◀ Dimensions start
- HW** Hot water storage