



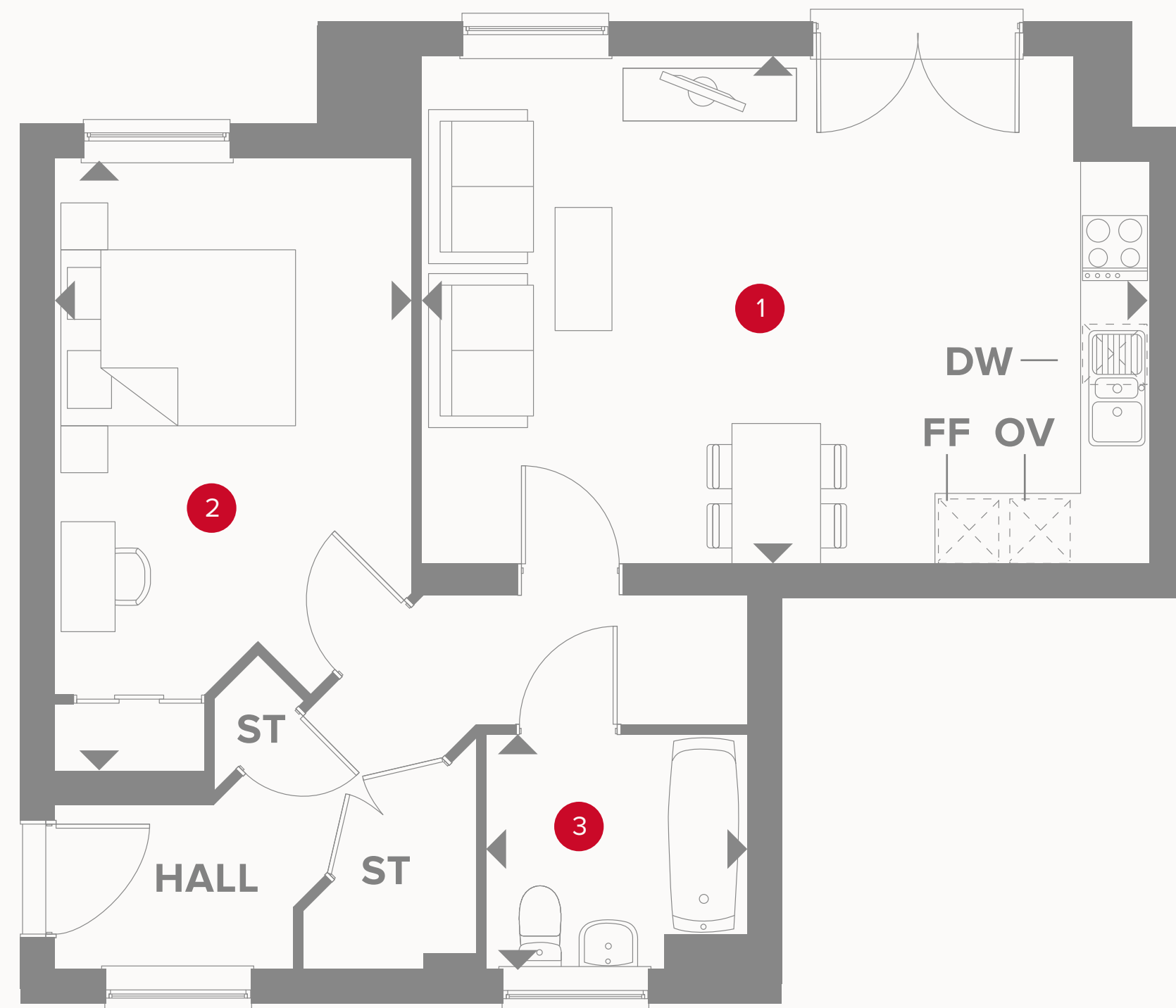
HERITAGE

- REDROW -

OAK COURT

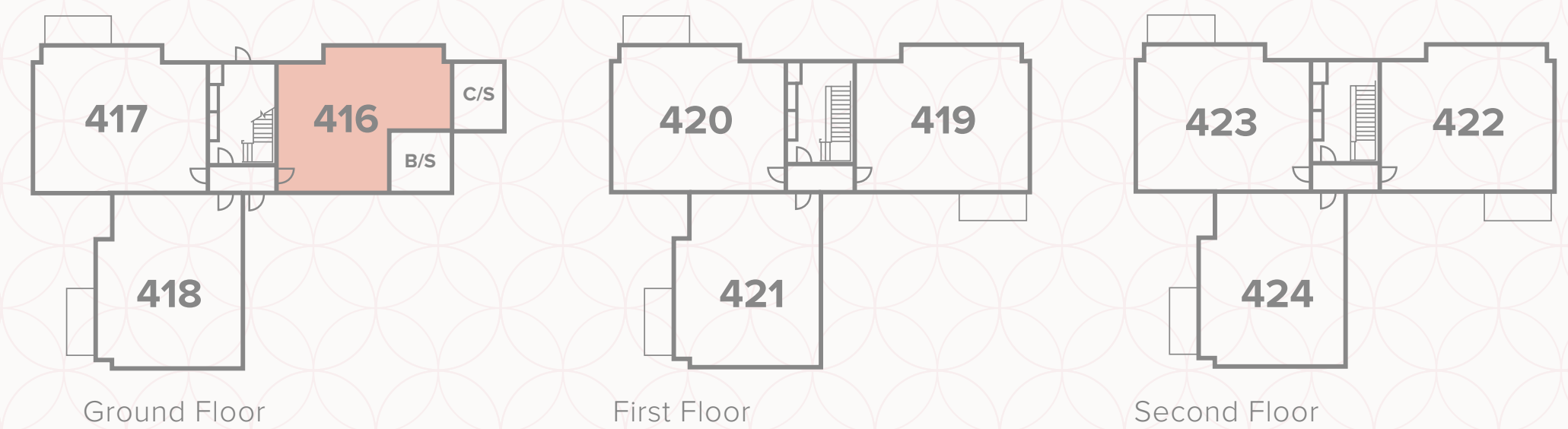
ONE AND TWO BEDROOM APARTMENTS

 **REDROW**



TYPE A

1	Lounge/Kitchen/Dining	20'4" x 14'2"	6.21 x 4.34 m
2	Bedroom	17'0" x 9'10"	5.20 x 3.02 m
3	Bathroom	7'3" x 6'6"	2.22 x 2.00 m

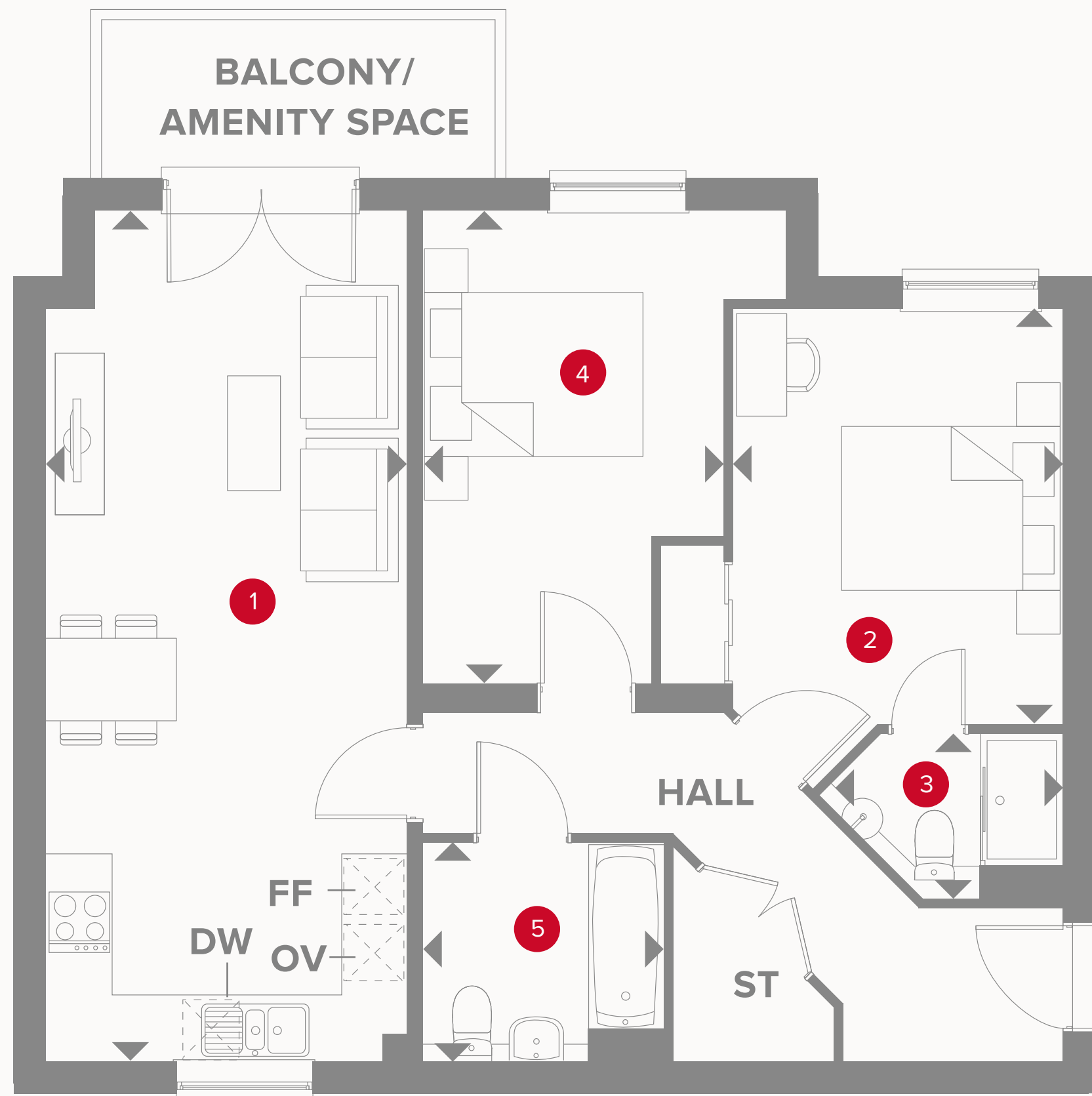


KEY

-  Hob
- OV** Oven
- FF** Fridge/freezer
-  Dimensions start
- ST** Storage cupboard
- DW** Dish washer space
- C/S** Cycle Store
- B/S** Bin Store

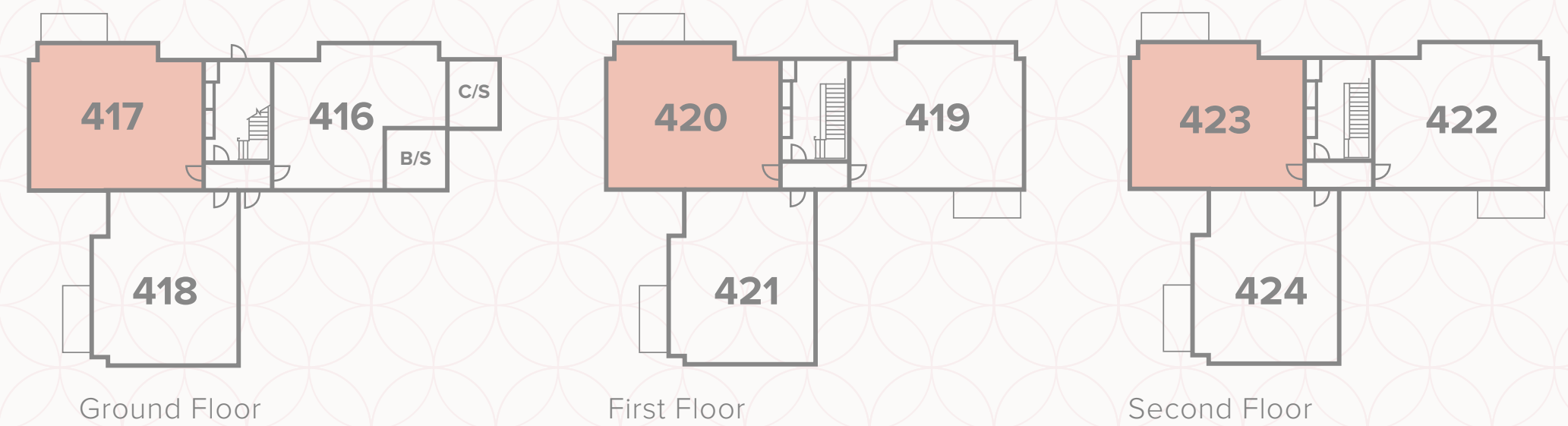
**CONSUMER
CODE FOR
HOME BUILDERS**
www.consumercode.co.uk

Customers should note this illustration is an example of the apartment type. All dimensions indicated are approximate and the furniture layout is for illustrative purposes only. Homes may be "handed" (mirror image) versions of the illustrations, and may be detached, semi-detached or terraced. Materials used may differ from plot to plot including render and roof tile colours. Detailed plans and specifications are available for inspection for each plot at our Sales Centre during working hours and customers must check their individual specifications prior to making a reservation.



TYPE B

1	Lounge/Kitchen/Dining	25'6" x 10'10"	7.79 x 3.31 m
2	Bedroom 1	12'5" x 9'10"	3.80 x 3.02 m
3	En-suite	7'3" x 4'11"	2.23 x 1.50 m
4	Bedroom 2	14'2" x 9'0"	4.34 x 2.75 m
5	Bathroom	7'2" x 6'6"	2.20 x 2.00 m

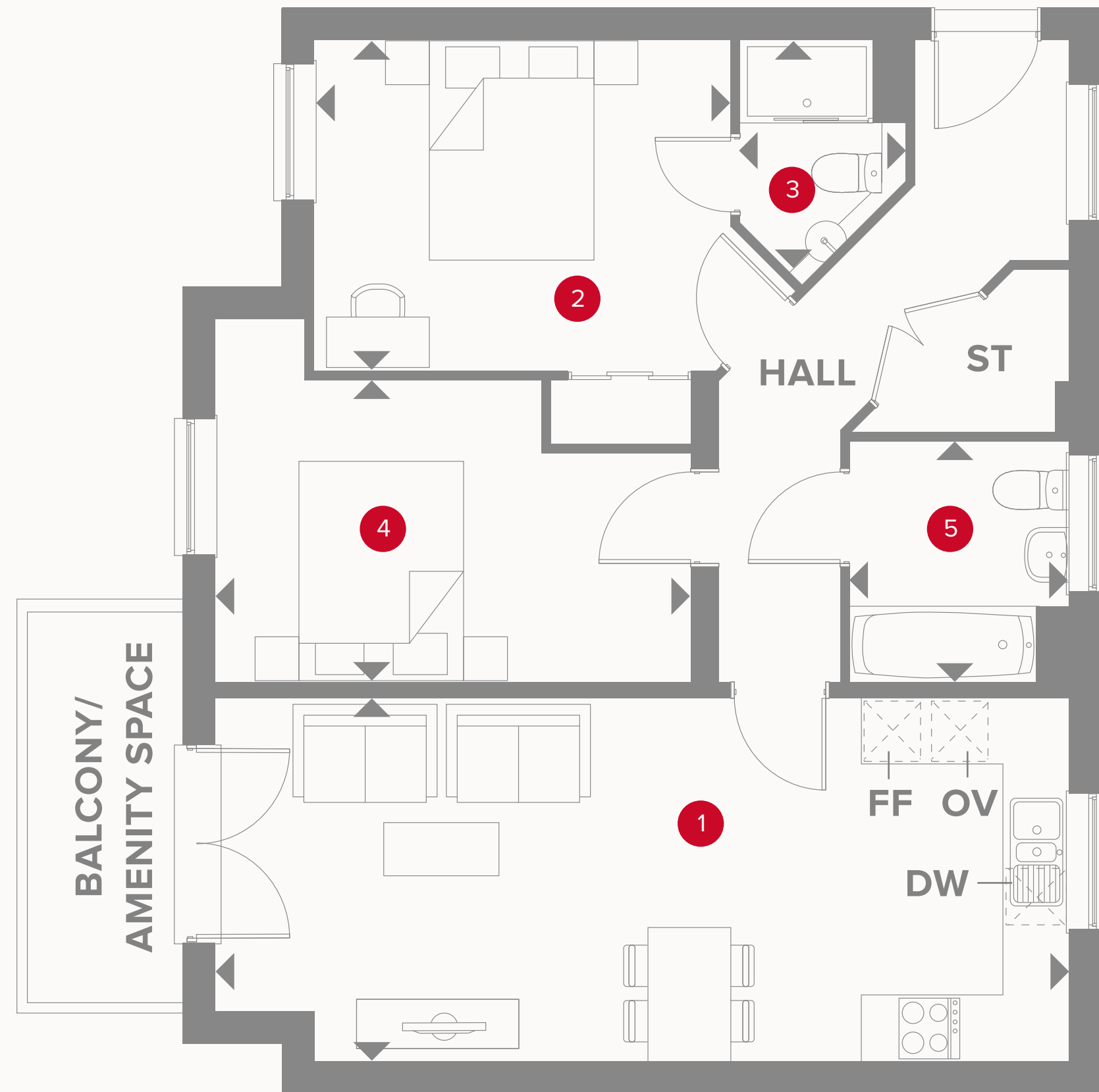


KEY

- Hob
- OV Oven
- FF Fridge/freezer
- Dimensions start
- ST Storage cupboard
- DW Dish washer space
- C/S Cycle Store
- B/S Bin Store

**CONSUMER
CODE FOR
HOME BUILDERS**
www.consumercode.co.uk

Customers should note this illustration is an example of the apartment type. All dimensions indicated are approximate and the furniture layout is for illustrative purposes only. Homes may be 'handed' (mirror image) versions of the illustrations, and may be detached, semi-detached or terraced. Materials used may differ from plot to plot including render and roof tile colours. Detailed plans and specifications are available for inspection for each plot at our Sales Centre during working hours and customers must check their individual specifications prior to making a reservation.

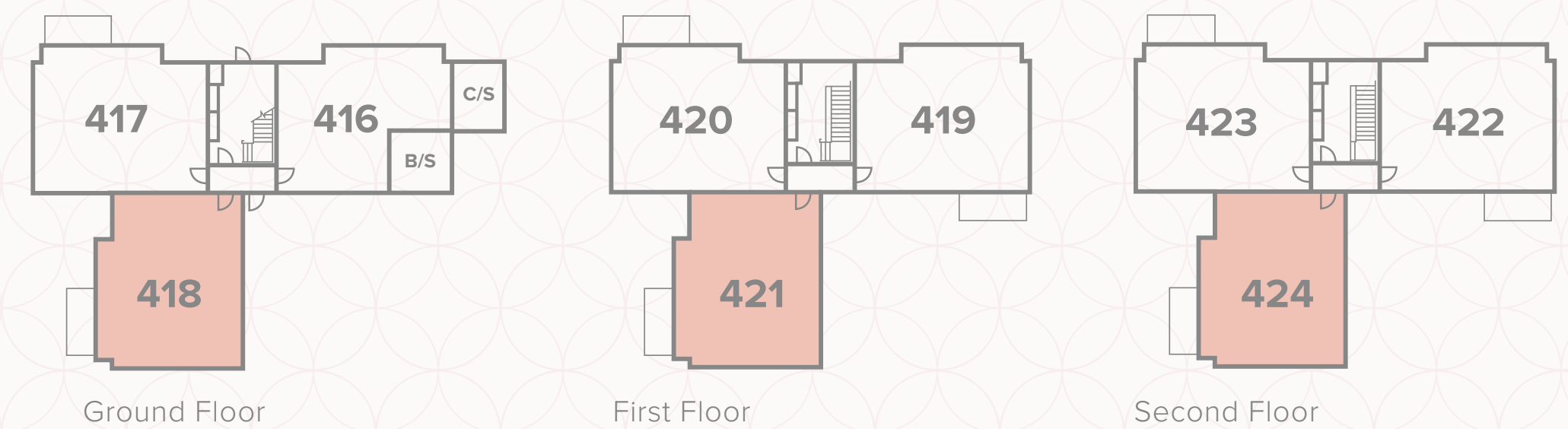


TYPE C

1	Lounge/Kitchen/Dining	25'6" x 10'10"	7.79 x 3.31 m
2	Bedroom 1	12'5" x 9'10"	3.80 x 3.02 m
3	En-suite	6'11" x 4'11"	2.11 x 1.50 m
4	Bedroom 2	14'2" x 9'0"	4.34 x 2.75 m
5	Bathroom	7'3" x 6'6"	2.20 x 2.00 m

KEY

- | | |
|--------------------------|-----------------------------|
| Hob | ST Storage cupboard |
| OV Oven | DW Dish washer space |
| FF Fridge/freezer | C/S Cycle Store |
| Dimensions start | B/S Bin Store |



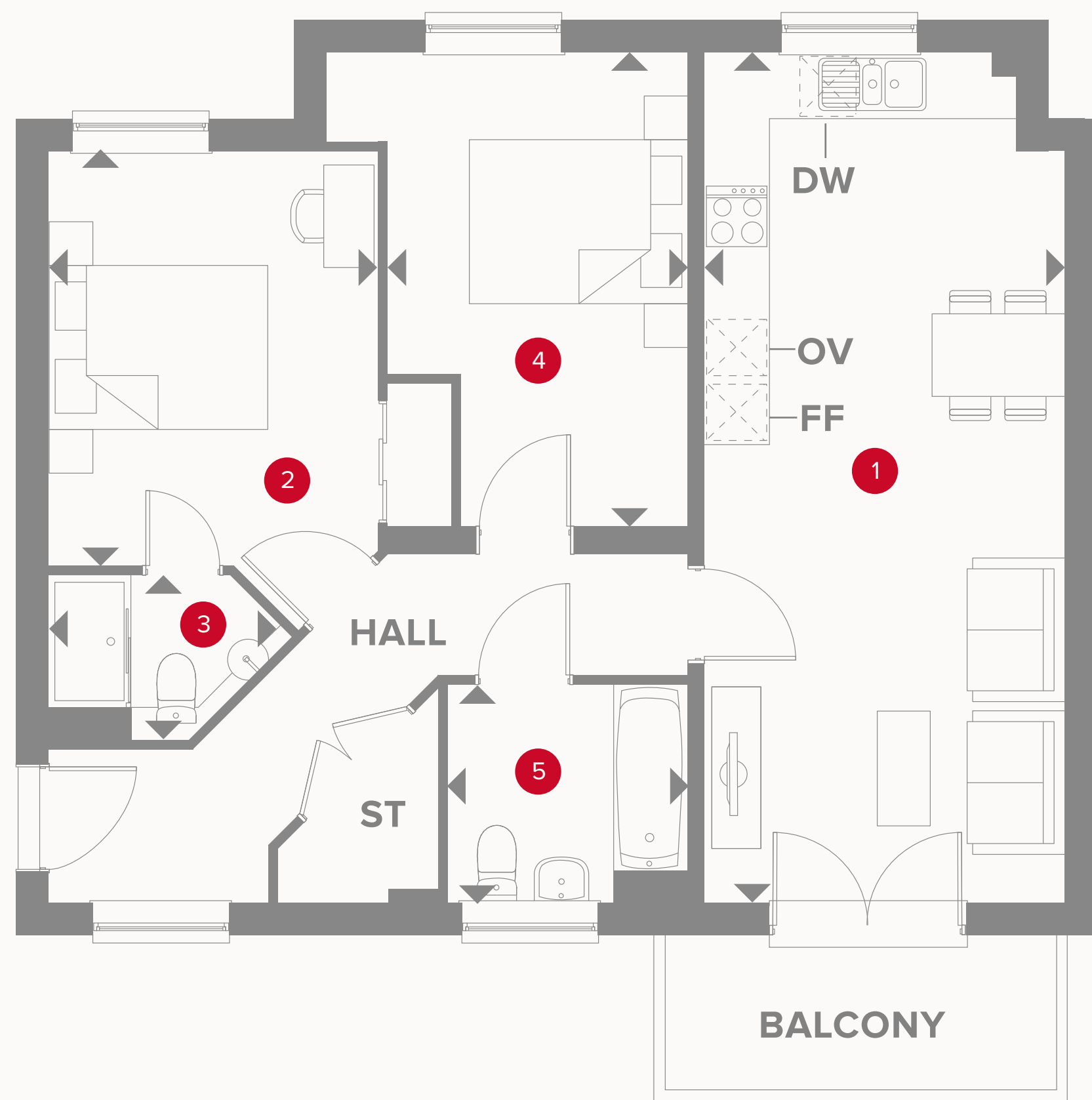
Ground Floor

First Floor

Second Floor

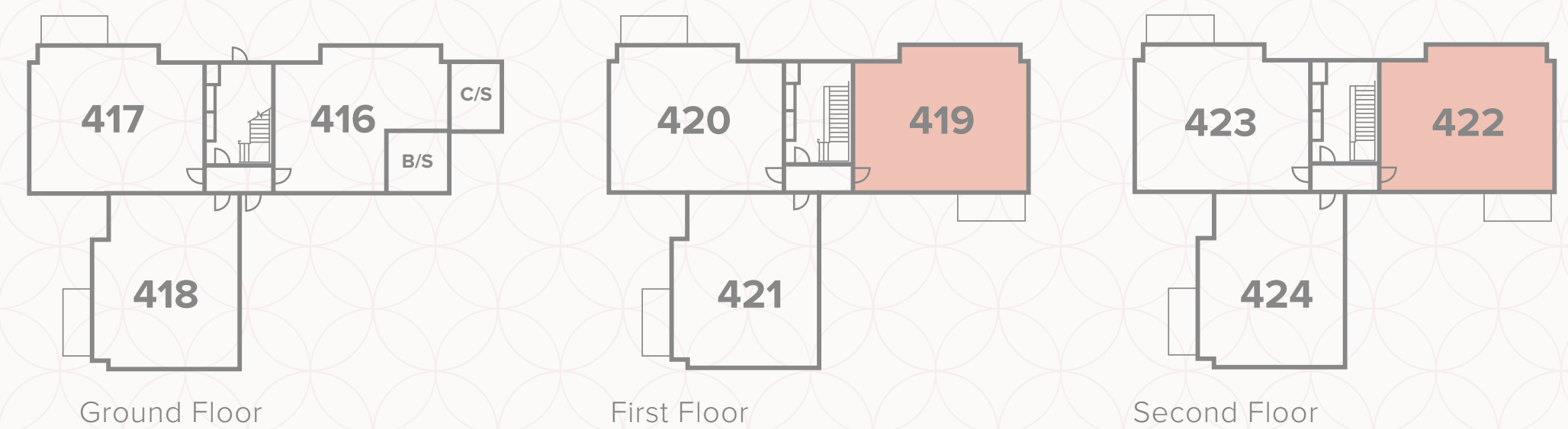
**CONSUMER
CODE FOR
HOME BUILDERS**
www.consumercode.co.uk

Customers should note this illustration is an example of the apartment type. All dimensions indicated are approximate and the furniture layout is for illustrative purposes only. Homes may be 'handed' (mirror image) versions of the illustrations, and may be detached, semi-detached or terraced. Materials used may differ from plot to plot including render and roof tile colours. Detailed plans and specifications are available for inspection for each plot at our Sales Centre during working hours and customers must check their individual specifications prior to making a reservation.



TYPE D

1	Lounge/Kitchen/Dining	25'6" x 10'10"	7.79 x 3.31 m
2	Bedroom 1	12'5" x 9'10"	3.80 x 3.02 m
3	En-suite	7'3" x 4'11"	2.22 x 1.50 m
4	Bedroom 2	14'2" x 9'0"	4.34 x 2.75 m
5	Bathroom	7'3" x 6'6"	2.20 x 2.00 m



KEY

-  Hob
-  OV Oven
-  FF Fridge/freezer
-  Dimensions start
-  ST Storage cupboard
-  DW Dish washer space
-  C/S Cycle Store
-  B/S Bin Store

**CONSUMER
CODE FOR
HOME BUILDERS**
www.consumercode.co.uk

Customers should note this illustration is an example of the apartment type. All dimensions indicated are approximate and the furniture layout is for illustrative purposes only. Homes may be 'handed' (mirror image) versions of the illustrations, and may be detached, semi-detached or terraced. Materials used may differ from plot to plot including render and roof tile colours. Detailed plans and specifications are available for inspection for each plot at our Sales Centre during working hours and customers must check their individual specifications prior to making a reservation.

PLAN YOUR DREAM HOME



KITCHEN

Kitchen Styles

A range of quality Symphony kitchen styles are available. Please see sales consultant for details.

Work Surfaces

A range of laminate work surfaces are available. Please see Sales Consultant for details.

Upstand

100mm high matching upstand above work surfaces.

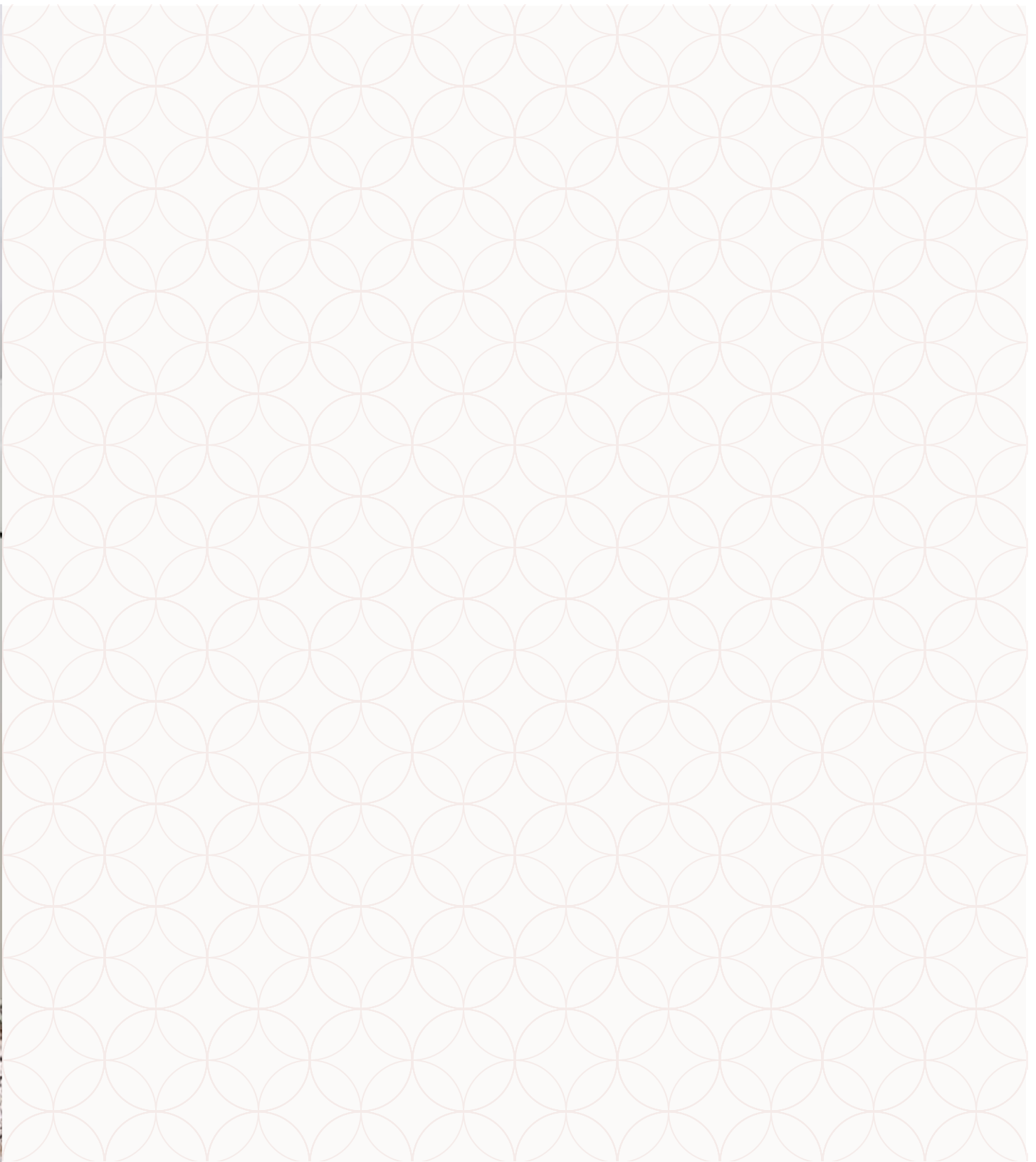
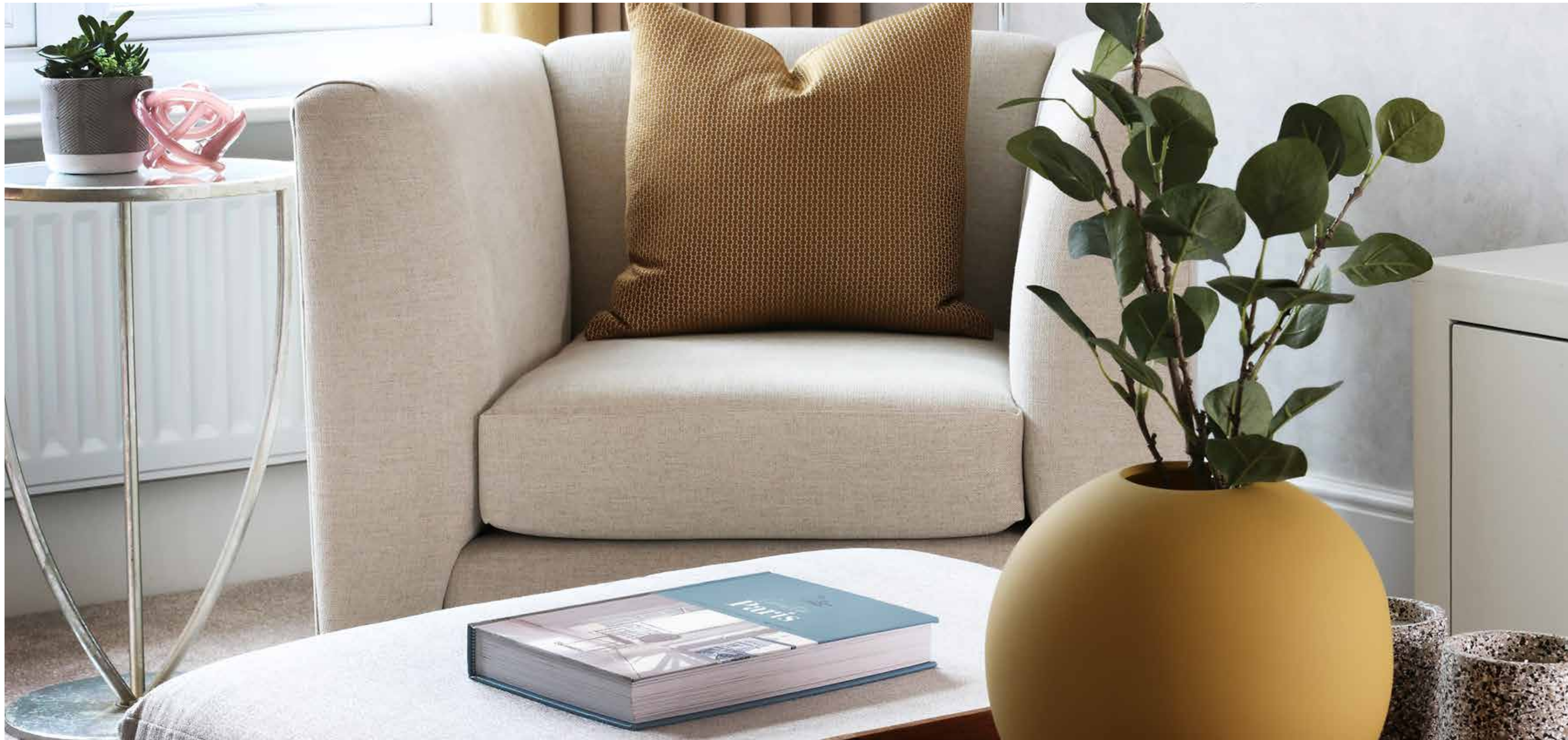
Black glass or Stainless steel Splashback

Bowl & Tap

Stainless steel Blanco Bonus 1.5 bowl sink with chrome mixer tap.

Appliances

- 60cm Ceramic Hob
- Single oven
- Cooker Hood
- Integrated fridge/freezer
- Freestanding washer dryer



INTERIOR

Walls

Crown white emulsion paint finish.

Internal Doors

Primed 2 panel door manufactured by National Hickman

Internal Door Furniture

Chrome effect door furniture from Carlisle Brass. Atalaya Lever on Round Rose.

Architrave

V profile MDF, satin white paint finish.

Skirting Boards

V profile MDF, satin white paint finish to match architrave.

Wardrobes

Hammonds wardrobe to Bedroom 1. Please see Sales Consultant for choices available.

Ceilings

Crown white emulsion paint finish.

Central Heating

Full gas central heating with energy efficient wall mounted boiler in all apartments. Please see sales consultant for details.

Radiators

Myson round top radiators.

Electrical Sockets & Switch Plates

BG low profile white electrical switch and socket plates. Refer to drawings for types and locations.

Lighting

Chrome downlights to kitchen area, bathroom and en-suite. LED under cupboard downlights to kitchen wall units where shown on kitchen layout. Pendant and batten lighting points to remaining areas.

TV Point

Located in the lounge and bedroom 1. Finish to match electrical sockets.

Phone Point

Located in the lounge. Finish to match electrical sockets.

Consumer Unit

Surface mounted BG consumer unit or semi recessed BG consumer unit to be installed. Please refer to drawings for locations.

Smoke Detectors

Fitted as standard to every property. These are connected to the mains electricity supply and have provision for battery back up in the event of a power cut.

OUR LUXURY
SPECIFICATIONS
ARE CAREFULLY
CONSIDERED
**AND BEAUTIFULLY
DESIGNED TO MAKE
THE MOST OF YOUR
NEW HOME**



BATHROOM & EN-SUITE

Bathroom & En-suite styles

Concept Cube white finish by Ideal Standard.

Toilet to be Concept Cube close coupled back-to-wall pan and cistern with dual flush.

Shower to En-suite

Shower Valve Alto Ecotherm bar valve.

Shower Tray Acrylic capped low profile shower tray.

Shower Screen Polished chrome effect finish shower door.

Brassware

Basin Sottini Tesino Basin mixer tap with single lever control complete with click plug waste.

Bath Sottini Tesino Mixer tap with single lever control complete with click plug waste.

Lighting

Chrome downlights.

Bath

Tempo Arc bath with Meridian Isocore

Bath Panel white finish.

Shower over bath with screen.

Towel Warmer

Chrome towel warmer to Bathroom and En-suite.

Wall Tiles to Bathroom & En-suite

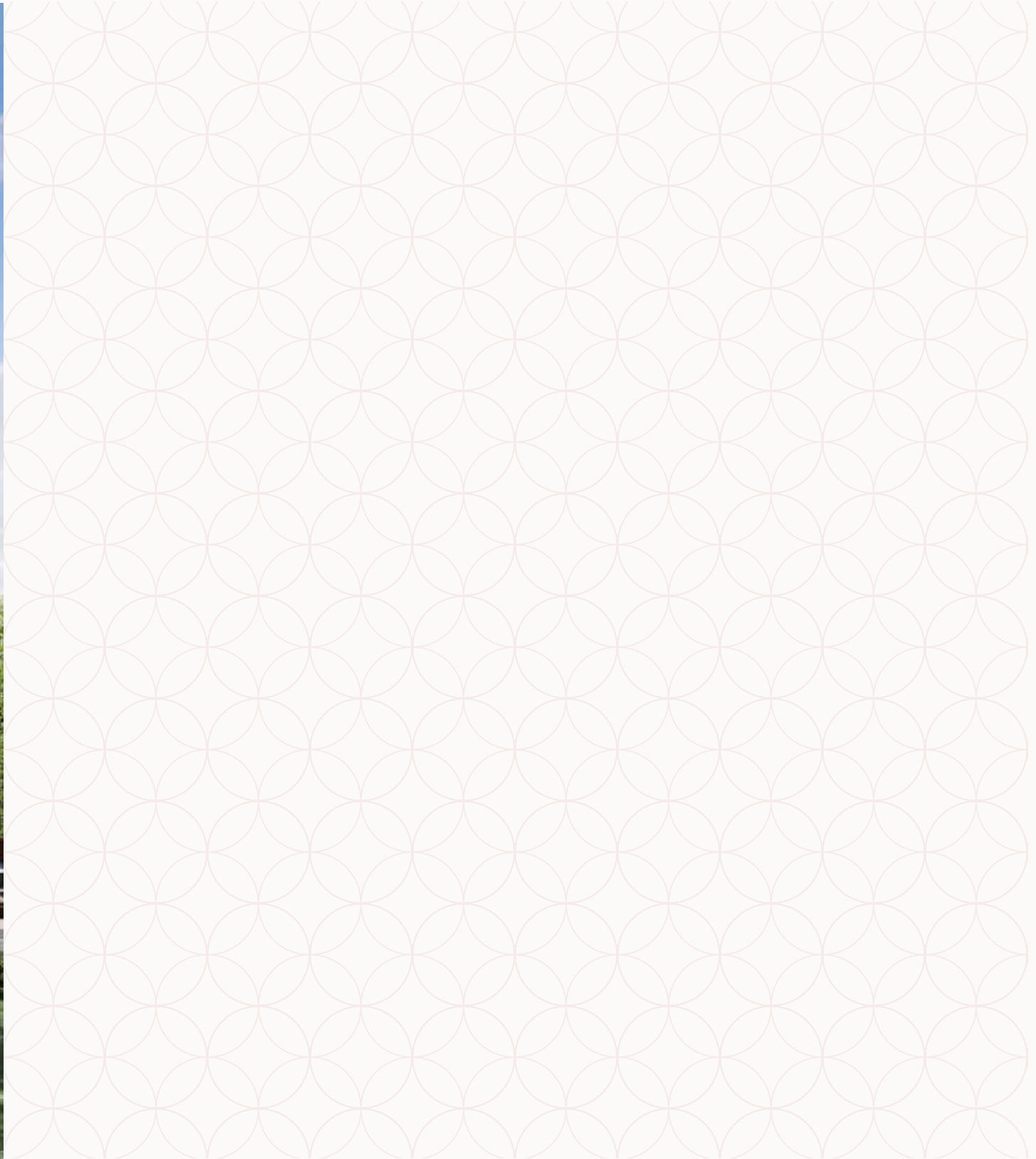
Porcelanosa wall tiling to Bathroom and En-suite to designated areas as reflected on drawings.

See Sales Consultant for ceramic tile choices.

Shaver Socket to Bathroom & En-suite

Socket in Bathroom and En-suite.

Finish to match electrical plates.
(where applicable).



COMMUNAL

- Main Entrance Door**
Steel or GRP door.
Style of door to be as indicated on elevations.
- Rear Door**
Steel or GRP door.
Style of door to be as indicated on elevations.
- Internal/Lobby doors**
White painted plain door.
- Skirtings**
Satin white paint finish.
- Staircase**
Precast concrete staircase with steel balustrade and plastic coated handrail.

- Ceiling Finish**
White emulsion paint finish.
- Wall Finish**
White emulsion paint finish.
- Door Entry System**
Video door entry system.
- Internal Lighting**
PIR lighting control sensors.
- Post Boxes**
White bank of boxes.

- Floor Covering**
Carpet to internal lobby areas & staircases.
Matwell & mats to main entrance doors.
- Landlords Cupboard**
Meter/Landlords cupboard as shown on construction drawings.
- Paving**
Buff Riven faced flags as indicated on drawing.