



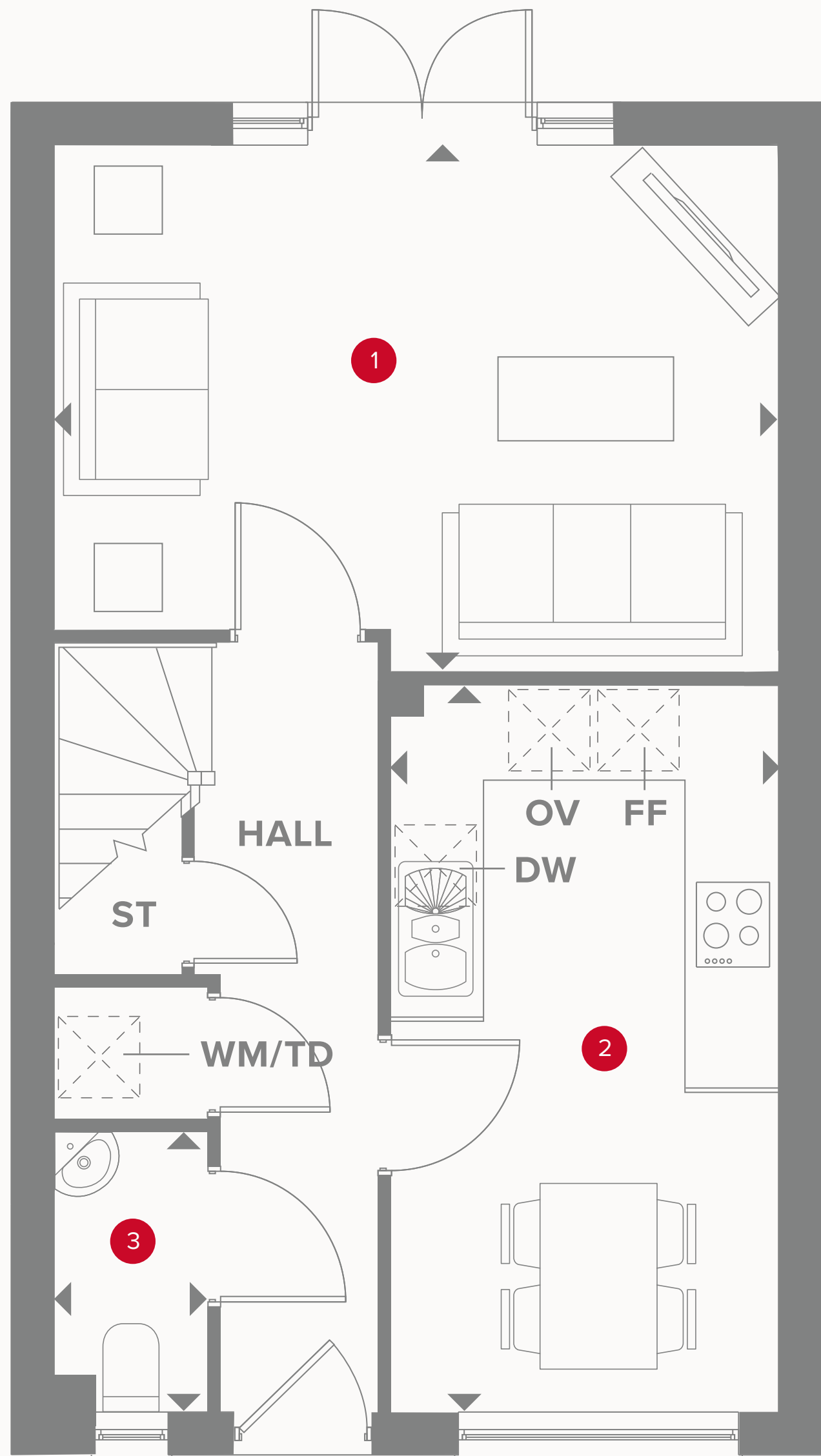
HERITAGE

- REDROW -

THE MALVERN SEMI SPECIAL

THREE BEDROOM HOME






Plots 116, 117, 128, 129, 134, 135, 143, 145, 148, 149, 170 & 171 are handed.


THE MALVERN SEMI SPECIAL GROUND FLOOR

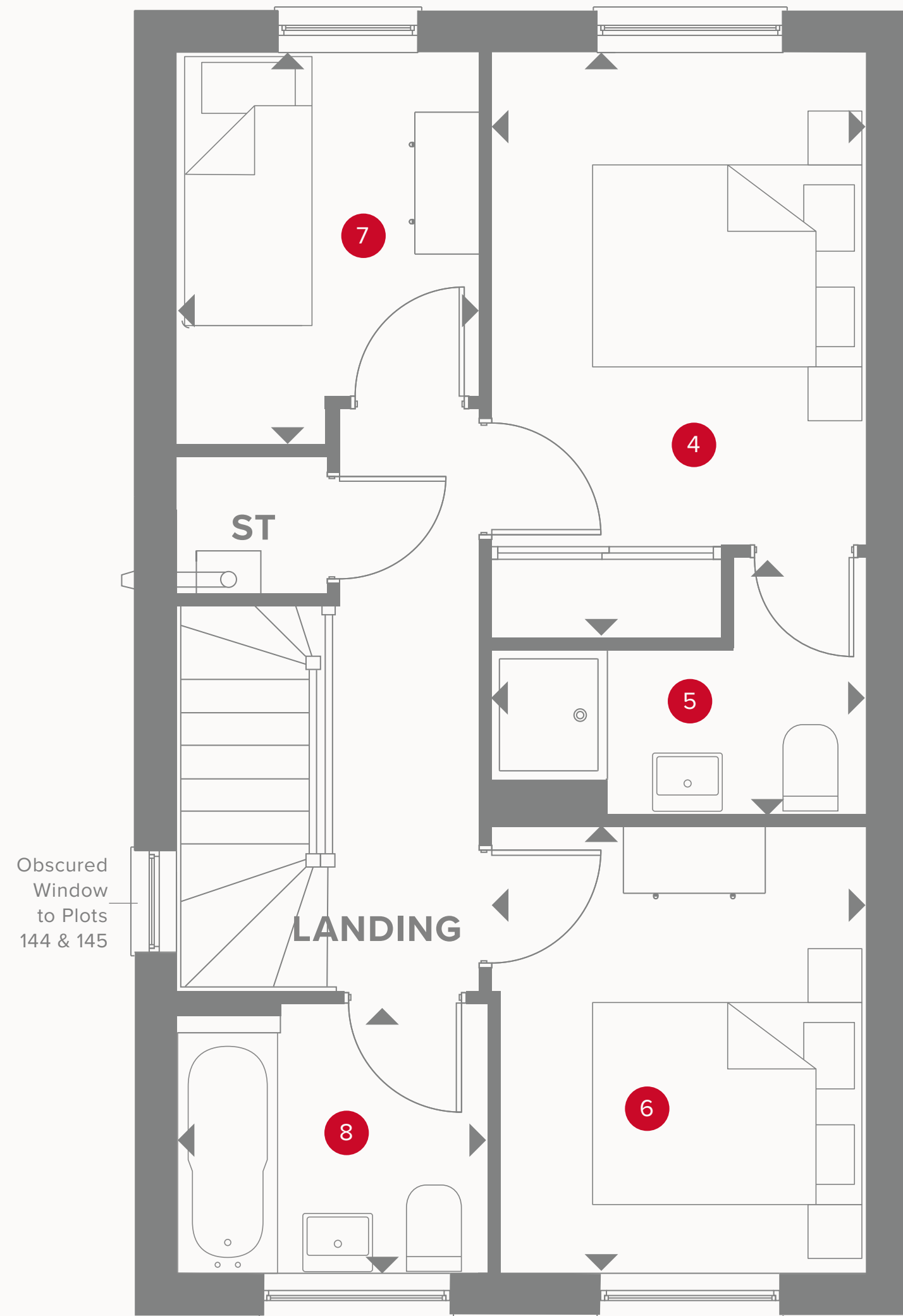
1	Lounge	15'3" x 11'2"	4.65 x 3.42 m
2	Kitchen/Dining	8'2" x 15'6"	2.49 x 4.73 m
3	Cloaks	3'1" x 5'10"	0.96 x 1.79 m



KEY

-  Hob
- OV** Oven
- FF** Fridge/freezer
- TD** Tumble dryer space

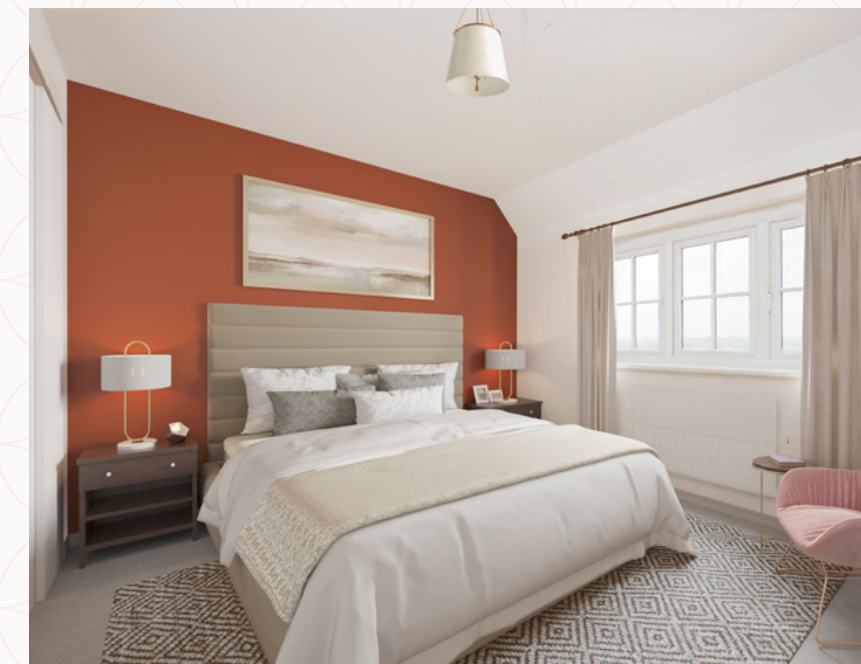
-  Dimensions start
- ST** Storage cupboard
- WM** Washing machine space
- DW** Dish washer space



Plots 1116, 117, 128, 129, 134, 135, 143, 145, 148, 149, 170 & 171 are handed.

THE MALVERN SEMI SPECIAL FIRST FLOOR

4	Bedroom 1	8'4" x 12'11"	2.54 x 3.95 m
5	En-suite	8'4" x 5'8"	2.54 x 1.73 m
6	Bedroom 2	8'4" x 9'10"	2.54 x 3.0 m
7	Bedroom 3	6'7" x 8'8"	2.01 x 2.65 m
8	Bathroom	6'9" x 5'10"	2.08 x 1.79 m



KEY

- ◀ Dimensions start
- HW Hot water storage

**CONSUMER
CODE FOR
HOME BUILDERS**

www.consumercode.co.uk

Customers should note this illustration is an example of the Malvern Semi Special house type. All dimensions indicated are approximate and the furniture layout is for illustrative purposes only. Homes may be 'handed' (mirror image) versions of the illustrations, and may be detached, semi-detached or terraced. Materials used may differ from plot to plot including render and roof tile colours. Detailed plans and specifications are available for inspection for each plot at our Sales Centre during working hours and customers must check their individual specifications prior to making a reservation.