



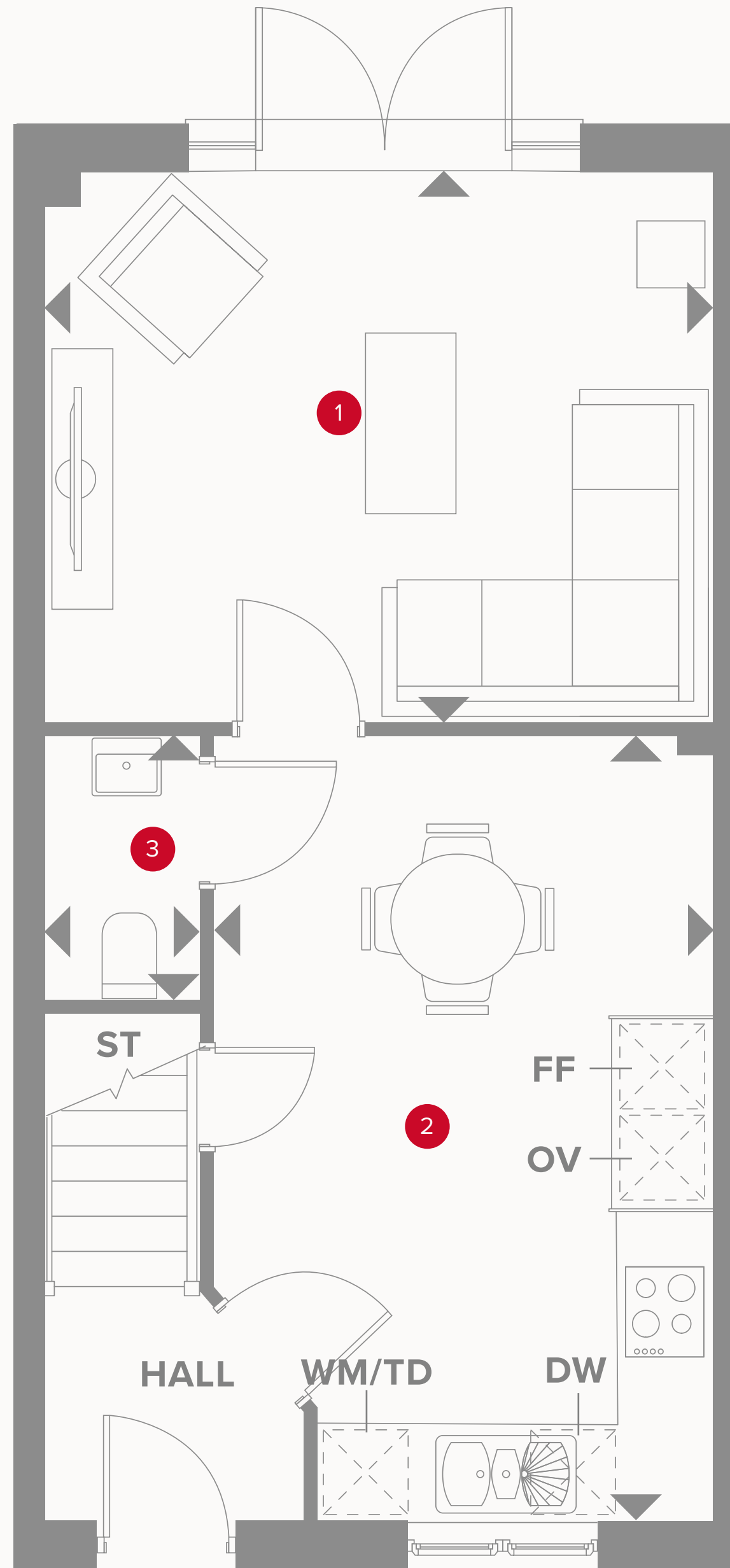
**HERITAGE**

- REDROW -

# THE STAMFORD (MID)

THREE BEDROOM HOME

 **REDROW**




Plots 83 & 164 are handed


# THE STAMFORD (MID) GROUND FLOOR

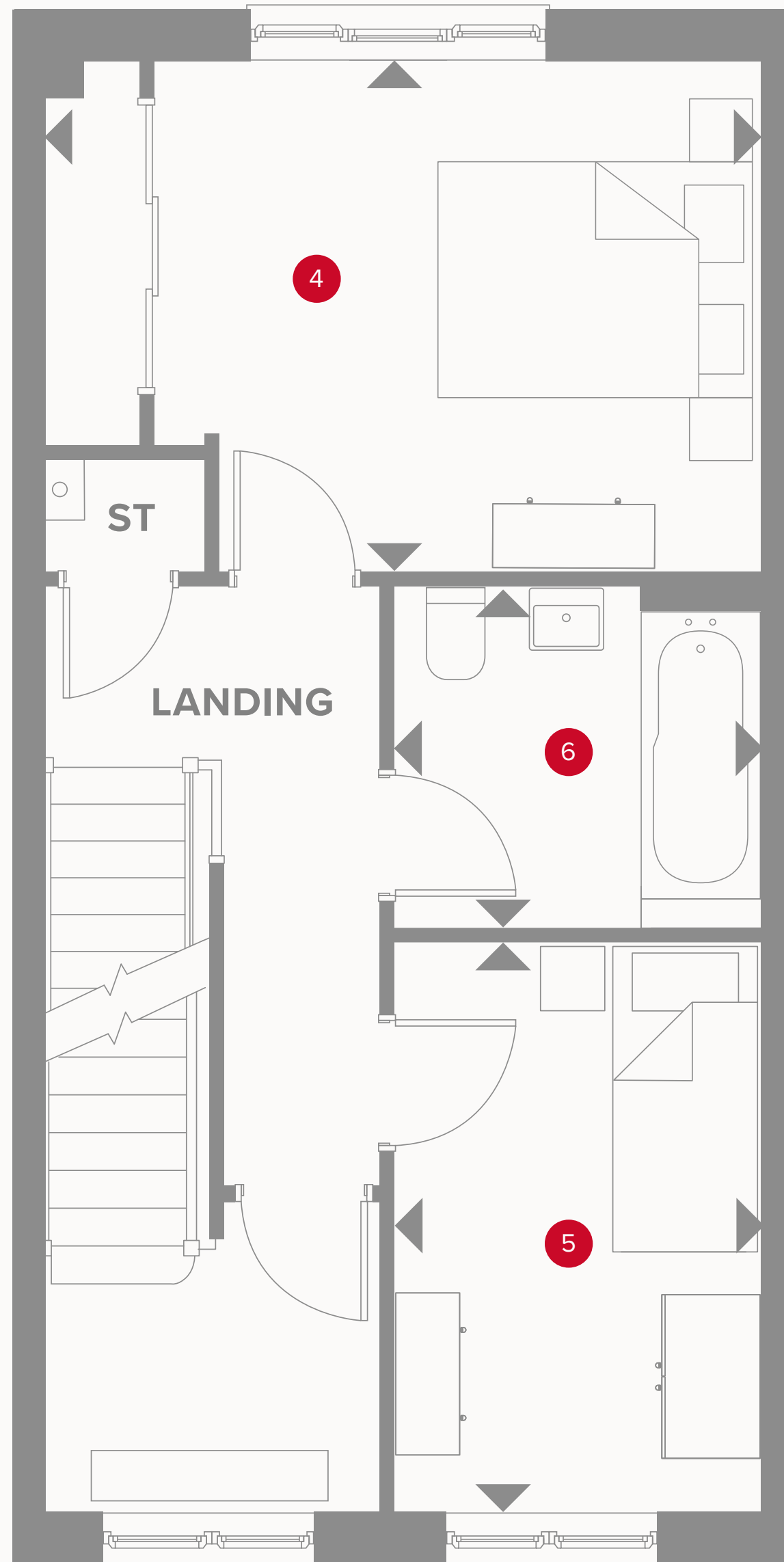
1 Lounge	13'11" x 11'7"	4.24 x 3.54 m
2 Kitchen/ Dining	16'4" x 10'6"	4.99 x 3.19 m
3 Cloaks	5'6" x 3'2"	1.68 x 0.96 m



## KEY

-  Hob
- OV** Oven
- FF** Fridge/freezer
- DW** Dish washer space

-  Dimensions start
- ST** Storage cupboard
- WM** Washing machine space
- TD** Tumble dryer space



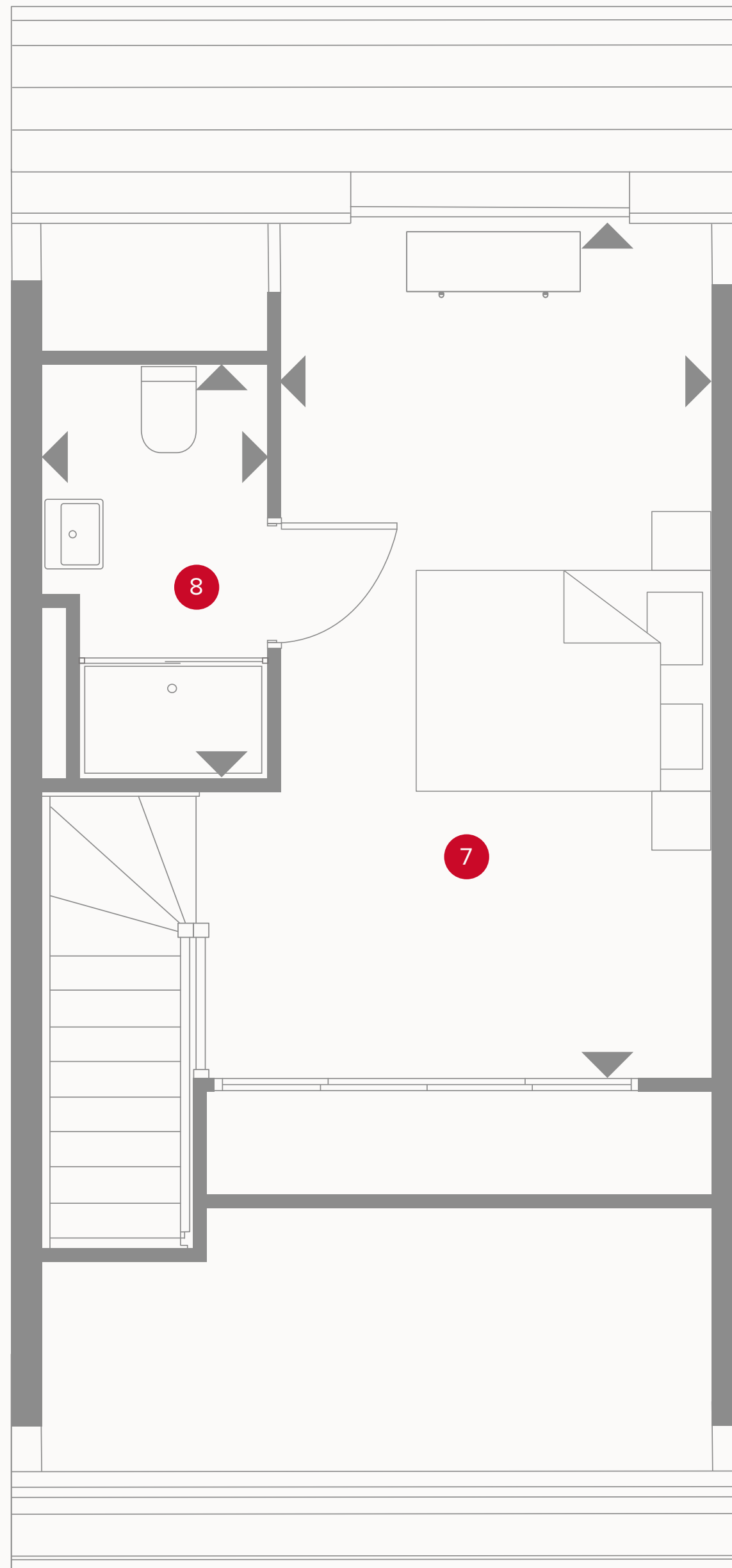
## THE STAMFORD (MID) FIRST FLOOR

4	Bedroom 2	13'11" x 9'11"	4.24 x 3.00 m
5	Bedroom 3	11'0" x 7'2"	3.35 x 2.18 m
6	Bathroom	7'2" x 6'9"	2.18 x 2.05 m



### KEY

- ◀ Dimensions start
- ST Storage cupboard



# THE STAMFORD (MID) SECOND FLOOR

7	Bedroom 1	20'4" x 8'11"	6.20 x 2.71 m
8	En-suite	8'8" x 4'6"	2.63 x 1.36 m



## KEY

◀ Dimensions start



Customers should note this illustration is an example of the Stamford house type. All dimensions indicated are approximate and the furniture layout is for illustrative purposes only. Homes may be 'handed' (mirror image) versions of the illustrations, and may be detached, semi-detached or terraced. Materials used may differ from plot to plot including render and roof tile colours. Detailed plans and specifications are available for inspection for each plot at our Sales Centre during working hours and customers must check their individual specifications prior to making a reservation. All wardrobes are subject to site specification. Please see Sales Consultant for further details.