



Apartment block image is subject to planning.

HERITAGE

- REDROW -

HENDRICKS GREEN

PARISIAN COURT
TWO BEDROOM APARTMENTS





DISCOVER A HIGHER QUALITY OF LIVING

Are you living in a larger home, but seeking a smaller, low-maintenance, and yet completely secure place to move to? Or maybe you're searching for your very first brand new home? Then our apartments at Hendricks Green could be just what you're looking for.

These well-appointed two bedroom apartments offer a high specification but with a low level of maintenance, plus an excellent level of security with the use of video door entry systems.

Inside is light and airy with open-plan kitchen/living/dining areas, ideal for entertaining friends and family, plus generously sized bedrooms complete with en-suite bathrooms. The apartment building also has a lift, making every floor easily accessible.

Our stunning apartments are well connected too, with trains to London in less than half an-hour, while the A10 and M25 are both located within five miles of home.

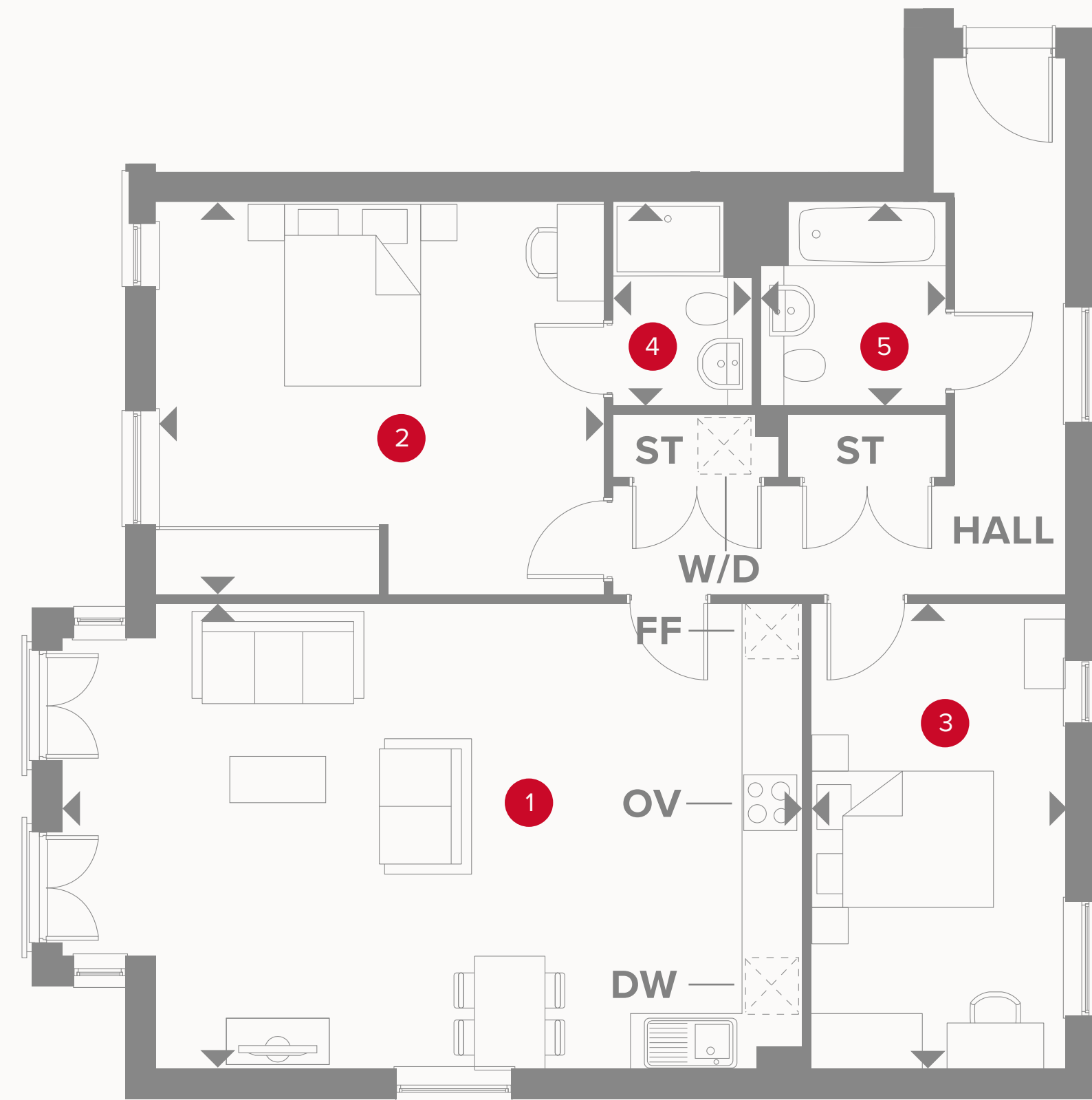
With all this available to you, it's no surprise Hendricks Green will offer you a high quality of life.



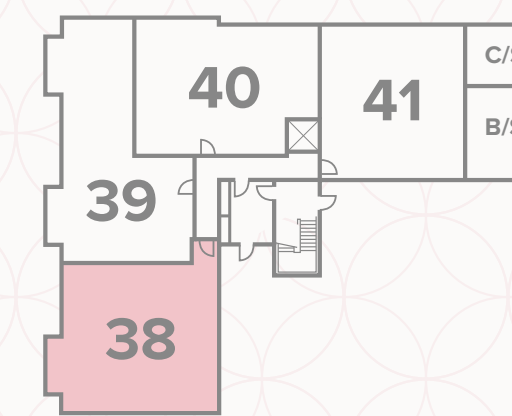


This plan is indicative and is intended for guidance only and does not form part of any contract or agreement, nor does it show ownership boundaries, easements or wayleaves and is subject to change. For specific details, other than general site layout, please liaise directly with our Sales Consultant.

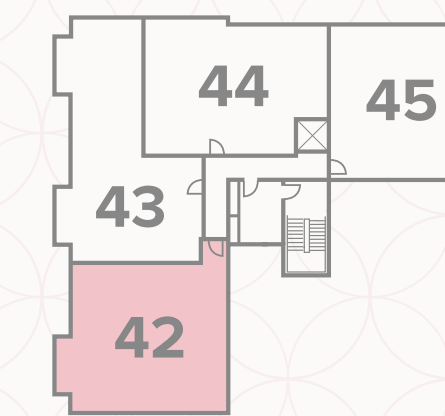
APARTMENT 38 & 42



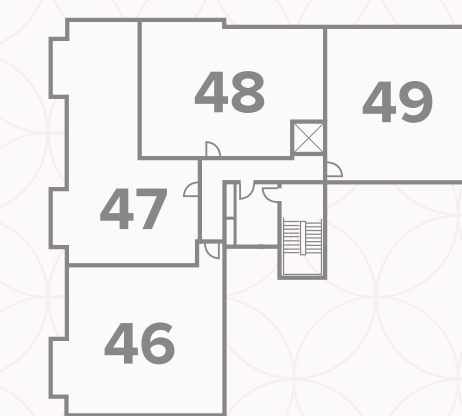
1	Lounge/Kitchen/Dining	26'2" x 16'4"	7.98m x 5.02 m
2	Bedroom 1	15'8" x 13'8"	4.83m x 4.23 m
3	Bedroom 2	16'4" x 9'1"	5.02m x 2.75 m
4	En-suite	7'2" x 4'9"	2.20m x 1.50 m
5	Bathroom	7'2" x 6'5"	2.20m x 2.00 m



Ground Floor



First Floor



Second Floor

KEY

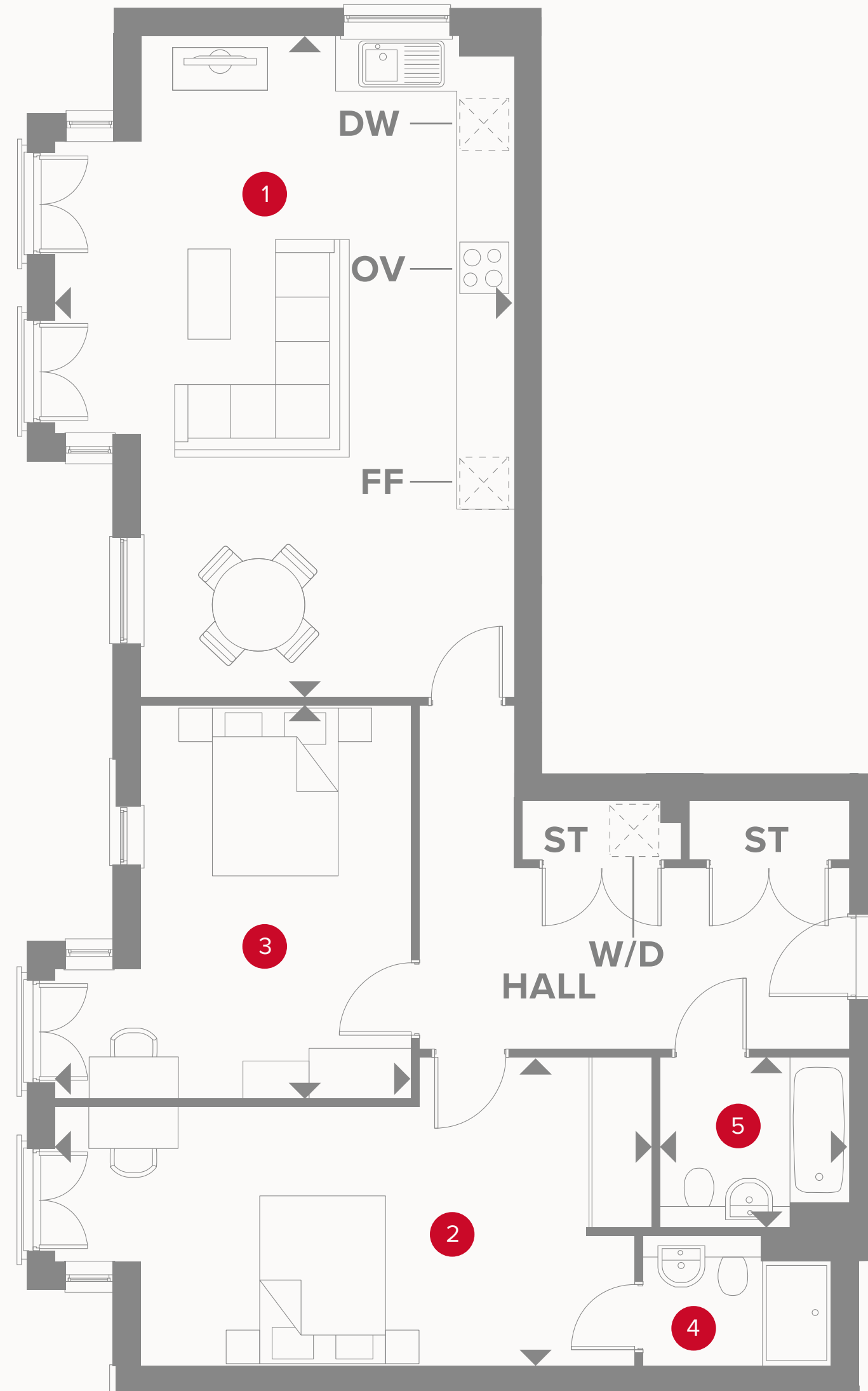
- Hob
- Oven
- Fridge/freezer
- Dimensions start

- Storage cupboard
- Washer/dryer
- Optional dishwasher space

- Cycle Store
- Bin Store

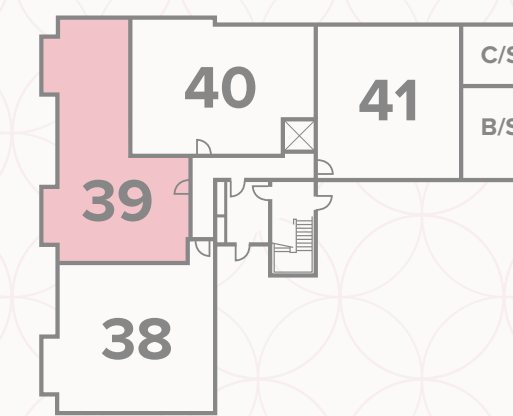


Customers should note this illustration is an example of the apartment types. All dimensions indicated are approximate and the furniture layout is for illustrative purposes only. Homes may be 'handed' (mirror image) versions of the illustrations, and may be detached, semi-detached or terraced. Materials used may differ from plot to plot including render and roof tile colours. Detailed plans and specifications are available for inspection for each plot at our Sales Centre during working hours and customers must check their individual specifications prior to making a reservation.

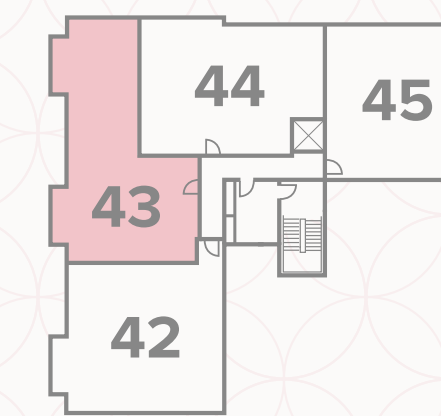


APARTMENT 39 & 43

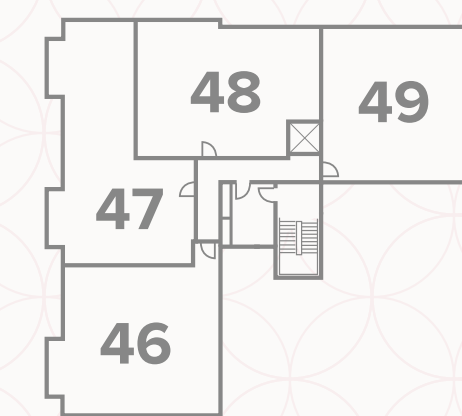
1	Lounge/Kitchen/Dining	25'3" x 17'5"	7.70m x 5.30 m
2	Bedroom 1	22'9" x 11'7"	6.90m x 3.50 m
3	Bedroom 2	18'3" x 13'6"	4.60m x 4.10 m
4	En-suite	7'2" x 4'9"	2.20m x 1.50 m
5	Bathroom	7'2" x 6'5"	2.20m x 2.00 m



Ground Floor



First Floor



Second Floor

KEY

- Hob
- Oven
- Fridge/freezer
- Dimensions start

- Storage cupboard
- Washer/dryer
- Optional dishwasher space

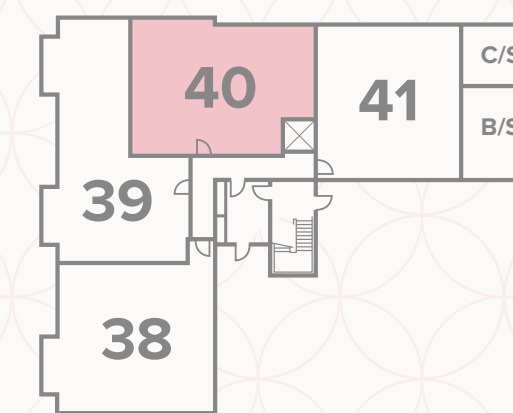
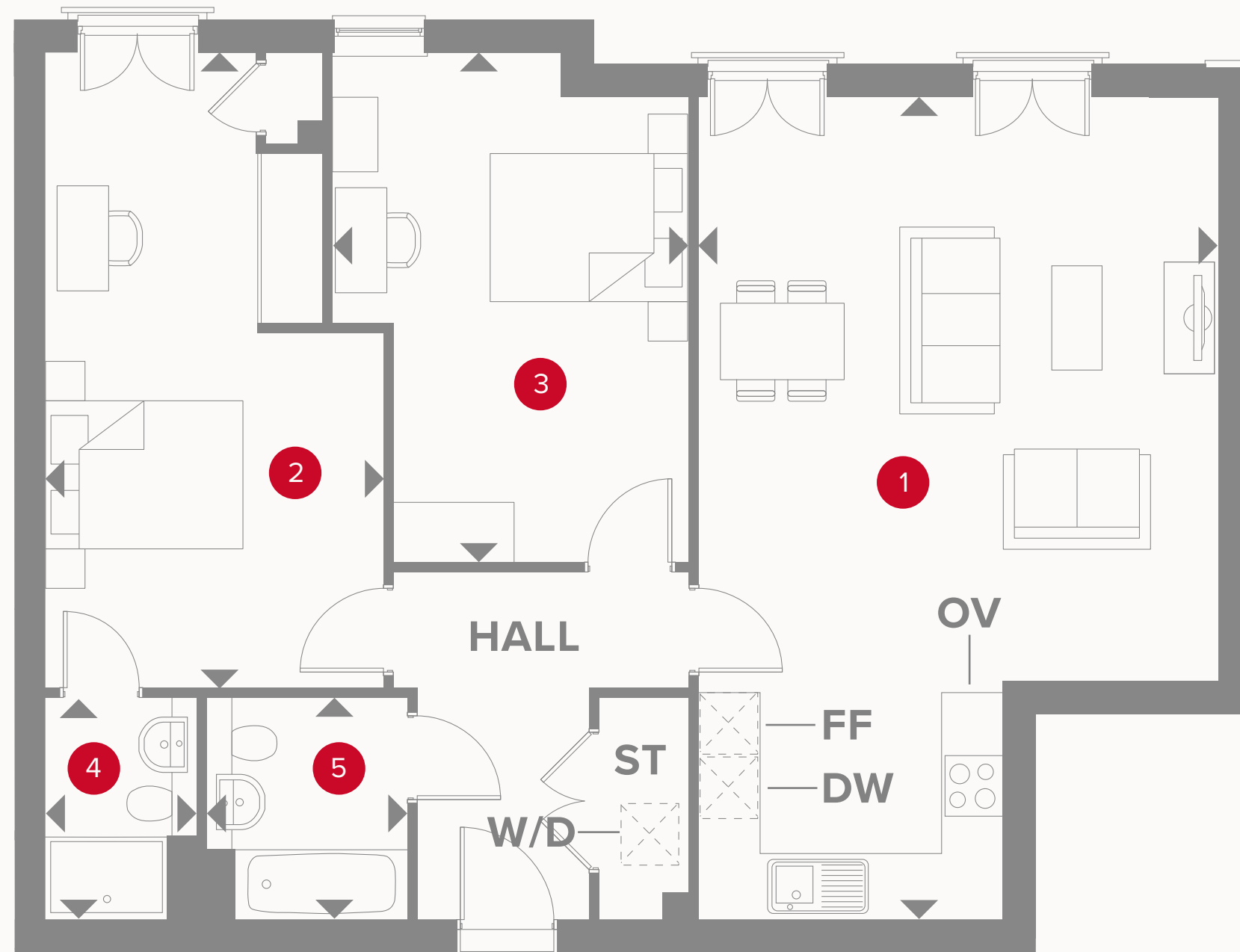
- Cycle Store
- Bin Store



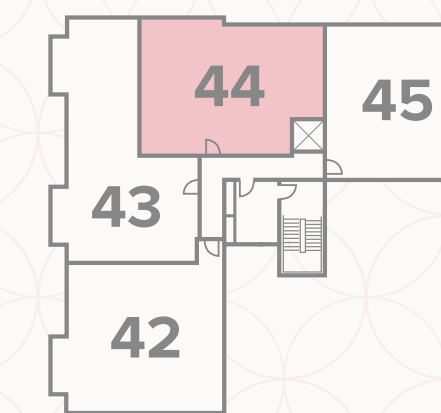
Customers should note this illustration is an example of the apartment types. All dimensions indicated are approximate and the furniture layout is for illustrative purposes only. Homes may be 'handed' (mirror image) versions of the illustrations, and may be detached, semi-detached or terraced. Materials used may differ from plot to plot including render and roof tile colours. Detailed plans and specifications are available for inspection for each plot at our Sales Centre during working hours and customers must check their individual specifications prior to making a reservation.

APARTMENT 40 & 44

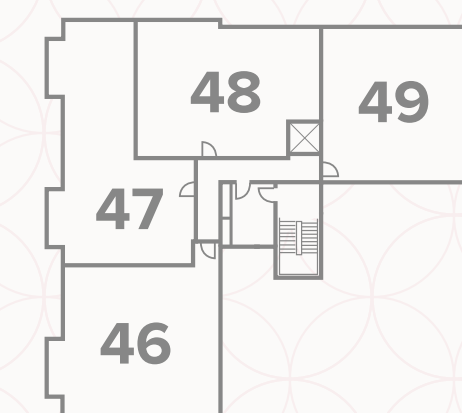
1 Lounge/Kitchen/Dining	26'7" x 16'8"	8.10m x 5.10 m
2 Bedroom 1	20'7" x 10'9"	6.30m x 3.30 m
3 Bedroom 2	16'6" x 11'6"	5.00m x 3.50 m
4 En-suite	7'2" x 4'9"	2.20m x 1.50 m
5 Bathroom	7'2" x 6'5"	2.20m x 2.00 m



Ground Floor



First Floor



Second Floor

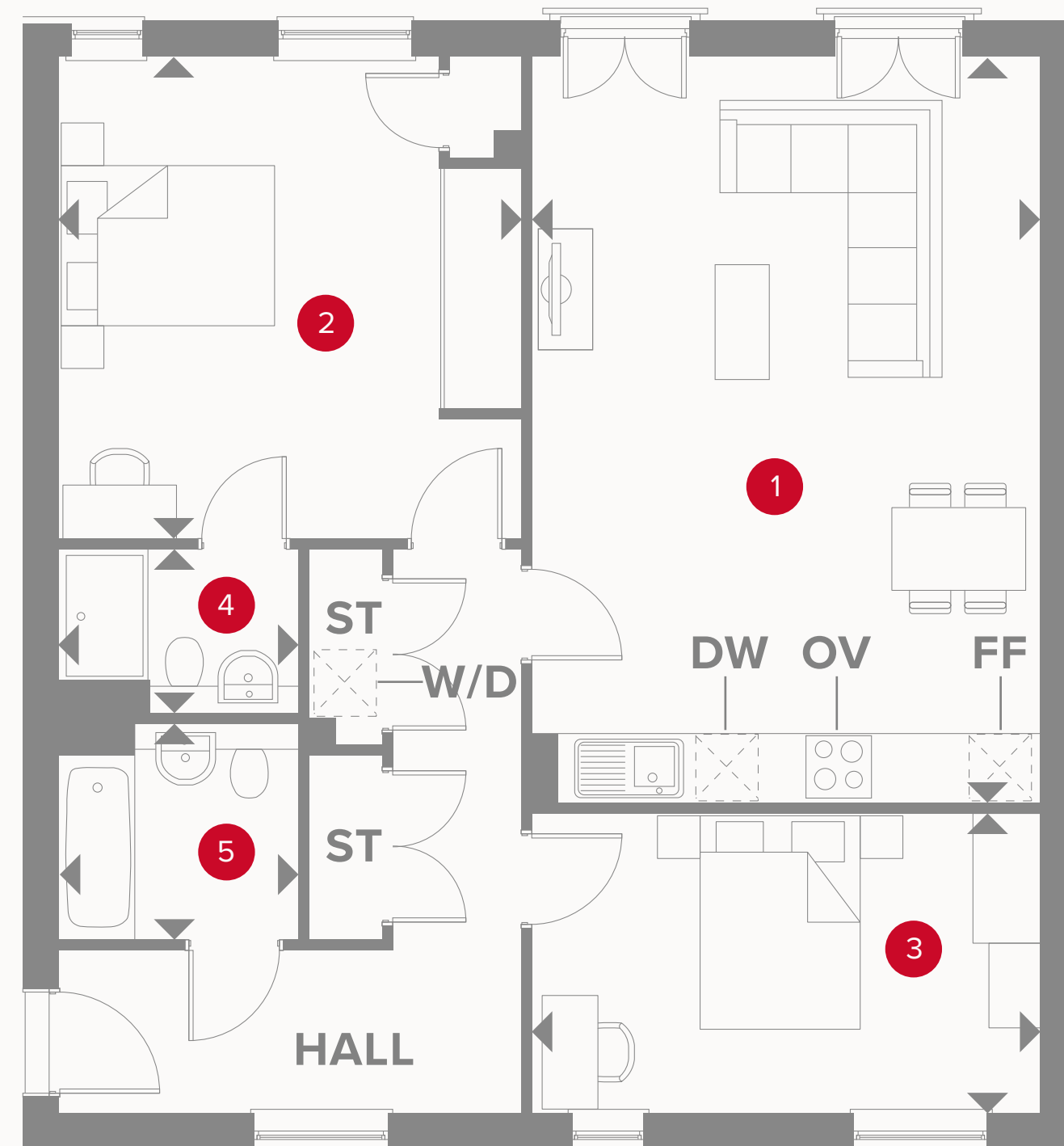
KEY

- | | | |
|--------------------------|-------------------------------------|------------------------|
| Hob | ST Storage cupboard | C/S Cycle Store |
| OV Oven | W/D Washer/dryer | B/S Bin Store |
| FF Fridge/freezer | DW Optional dishwasher space | Lift |
| Dimensions start | | |

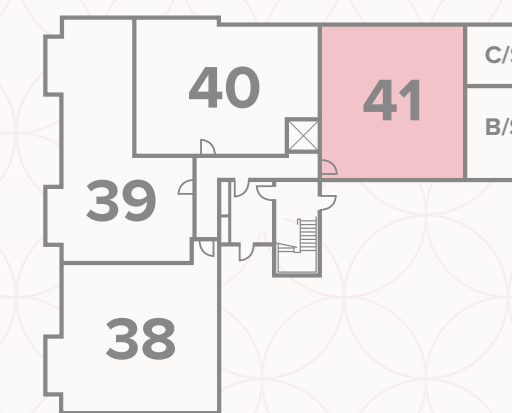


Customers should note this illustration is an example of the apartment types. All dimensions indicated are approximate and the furniture layout is for illustrative purposes only. Homes may be 'handed' (mirror image) versions of the illustrations, and may be detached, semi-detached or terraced. Materials used may differ from plot to plot including render and roof tile colours. Detailed plans and specifications are available for inspection for each plot at our Sales Centre during working hours and customers must check their individual specifications prior to making a reservation.

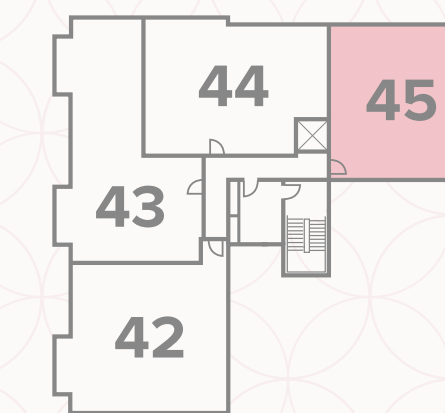
APARTMENT 41 & 45



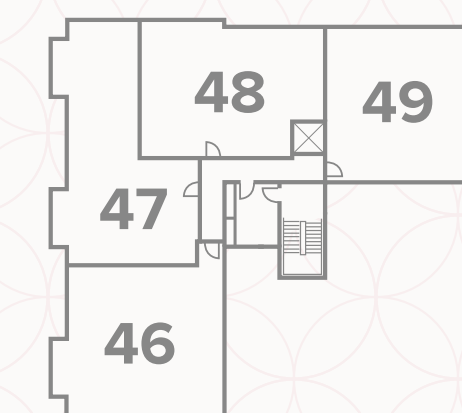
1	Lounge/Kitchen/Dining	22'3" x 15'2"	6.80m x 4.60 m
2	Bedroom 1	14'6" x 13'8"	4.40m x 4.20 m
3	Bedroom 2	15'4" x 9'2"	4.70m x 2.70 m
4	En-suite	7'2" x 4'9"	2.20m x 1.50 m
5	Bathroom	7'2" x 6'5"	2.20m x 2.00 m



Ground Floor



First Floor



Second Floor

KEY

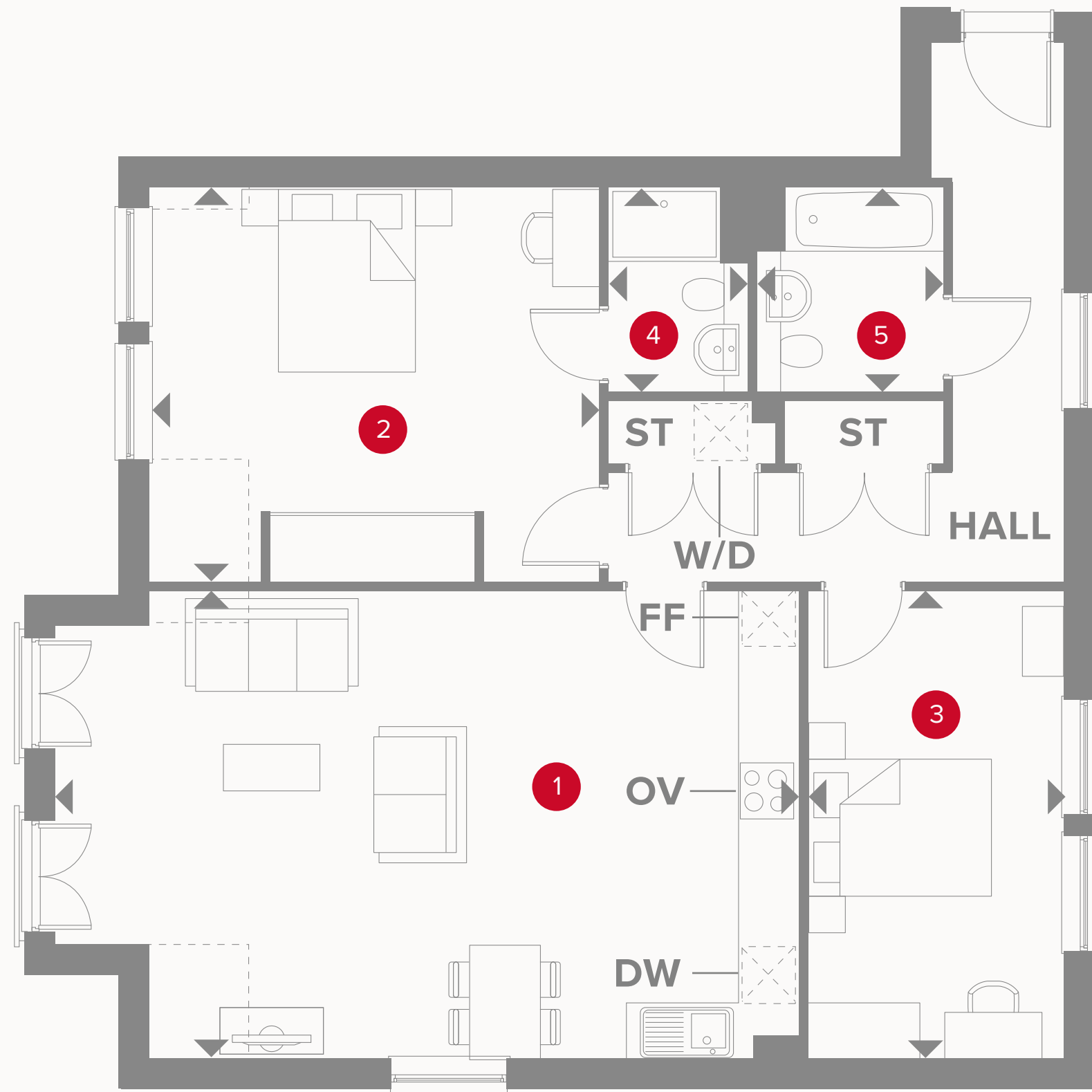
- Hob
- OV** Oven
- FF** Fridge/freezer
- Dimensions start

- ST** Storage cupboard
- W/D** Washer/dryer
- DW** Optional dishwasher space

- C/S** Cycle Store
- B/S** Bin Store

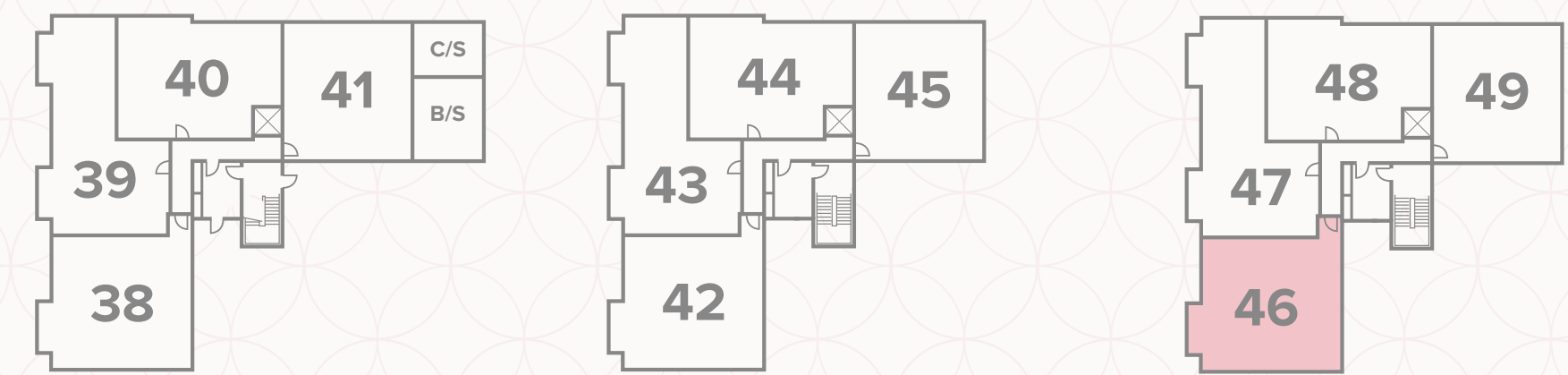


Customers should note this illustration is an example of the apartment types. All dimensions indicated are approximate and the furniture layout is for illustrative purposes only. Homes may be 'handed' (mirror image) versions of the illustrations, and may be detached, semi-detached or terraced. Materials used may differ from plot to plot including render and roof tile colours. Detailed plans and specifications are available for inspection for each plot at our Sales Centre during working hours and customers must check their individual specifications prior to making a reservation.



APARTMENT 46

1	Lounge/Kitchen/Dining	22'8" x 16'4"	6.90m x 5.00 m
2	Bedroom 1	15'8" x 13'8"	4.80m x 4.20 m
3	Bedroom 2	16'4" x 9'0"	2.70m x 5.00 m
4	En-suite	7'2" x 4'9"	2.20m x 1.50 m
5	Bathroom	7'2" x 6'5"	2.20m x 2.00 m



Ground Floor

First Floor

Second Floor

KEY

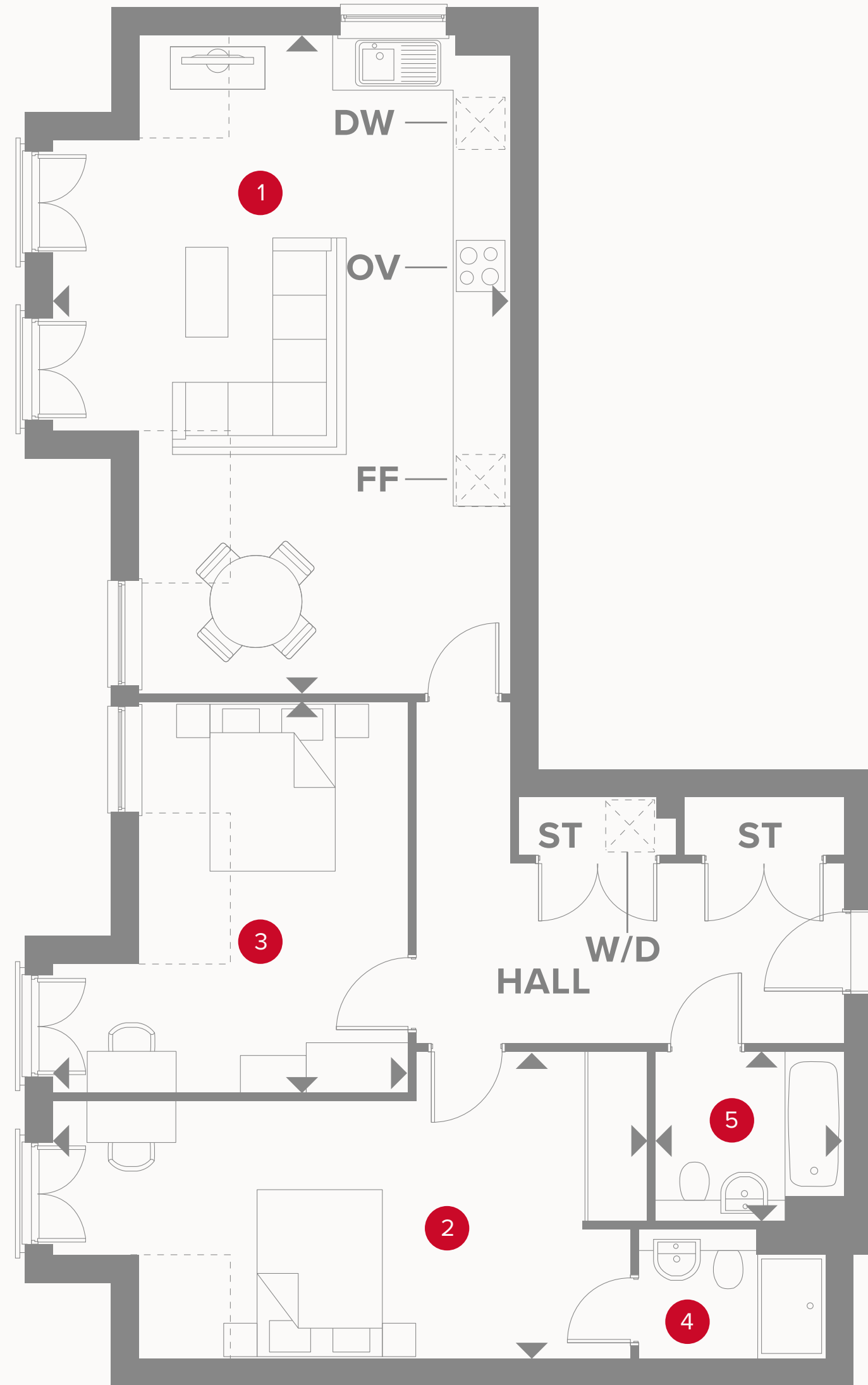
- Hob
- OV** Oven
- FF** Fridge/freezer
- Dimensions start

- ST** Storage cupboard
- W/D** Washer/dryer
- DW** Optional dishwasher space

- C/S** Cycle Store
- B/S** Bin Store

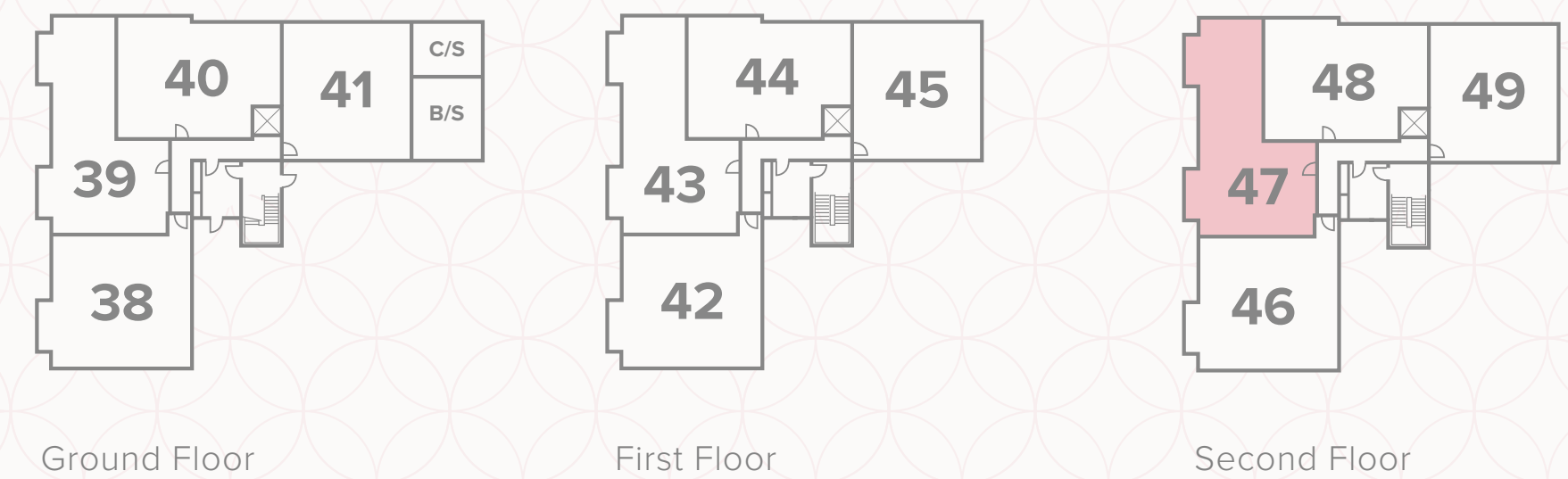


Customers should note this illustration is an example of the apartment types. All dimensions indicated are approximate and the furniture layout is for illustrative purposes only. Homes may be 'handed' (mirror image) versions of the illustrations, and may be detached, semi-detached or terraced. Materials used may differ from plot to plot including render and roof tile colours. Detailed plans and specifications are available for inspection for each plot at our Sales Centre during working hours and customers must check their individual specifications prior to making a reservation.



APARTMENT 47

1	Lounge/Kitchen/Dining	25'3" x 17'5"	7.70m x 5.30 m
2	Bedroom 1	22'9" x 11'7"	6.90m x 3.50 m
3	Bedroom 2	15'1" x 13'6"	4.60m x 4.10 m
4	En-suite	7'2" x 4'9"	2.20m x 1.50 m
5	Bathroom	7'2" x 6'5"	2.20m x 2.00 m



KEY

- Hob
- Oven
- Fridge/freezer
- Dimensions start

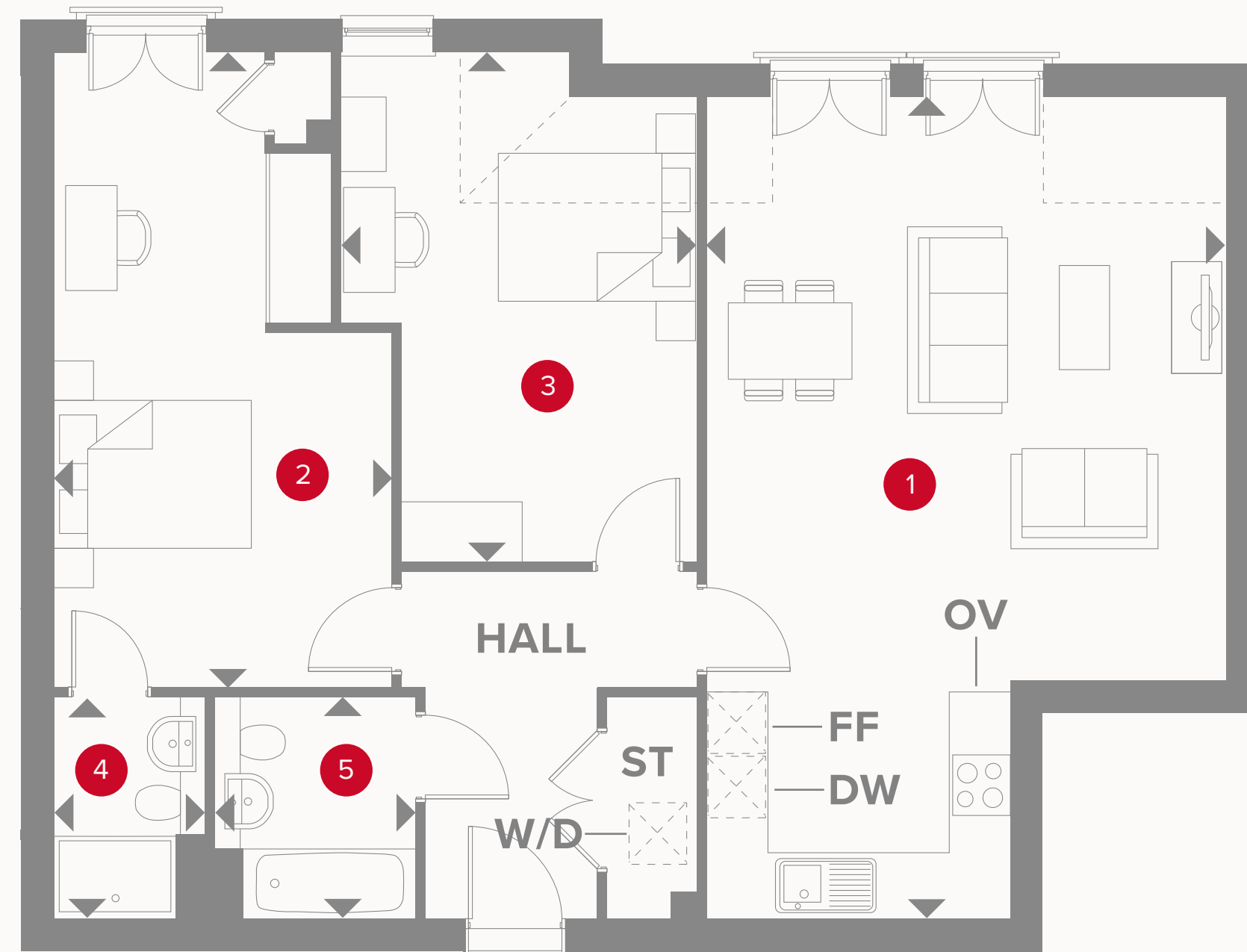
- Storage cupboard
- Washer/dryer
- Optional dishwasher space

- Cycle Store
- Bin Store

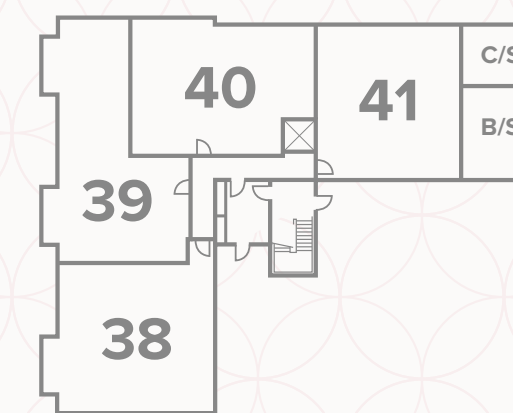
**CONSUMER
CODE FOR
HOME BUILDERS**
www.consumercode.co.uk

Customers should note this illustration is an example of the apartment types. All dimensions indicated are approximate and the furniture layout is for illustrative purposes only. Homes may be 'handed' (mirror image) versions of the illustrations, and may be detached, semi-detached or terraced. Materials used may differ from plot to plot including render and roof tile colours. Detailed plans and specifications are available for inspection for each plot at our Sales Centre during working hours and customers must check their individual specifications prior to making a reservation.

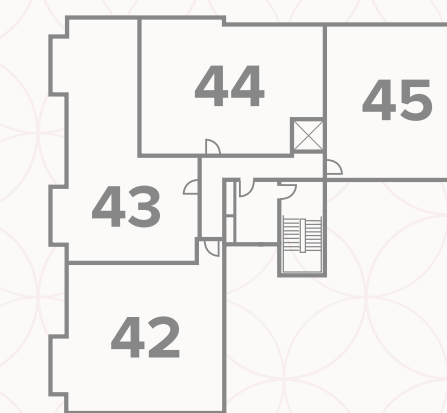
APARTMENT 48



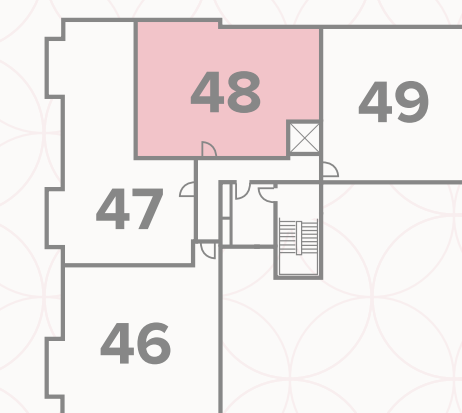
1	Lounge/Kitchen/Dining	26'7" x 16'8"	8.10m x 5.10 m
2	Bedroom 1	20'7" x 10'9"	6.36m x 3.30 m
3	Bedroom 2	16'6" x 11'6"	5.00m x 3.50 m
4	En-suite	7'2" x 4'9"	2.20m x 1.50 m
5	Bathroom	7'2" x 6'5"	2.20m x 2.00 m



Ground Floor



First Floor



Second Floor

KEY

- Hob
- OV** Oven
- FF** Fridge/freezer
- Dimensions start

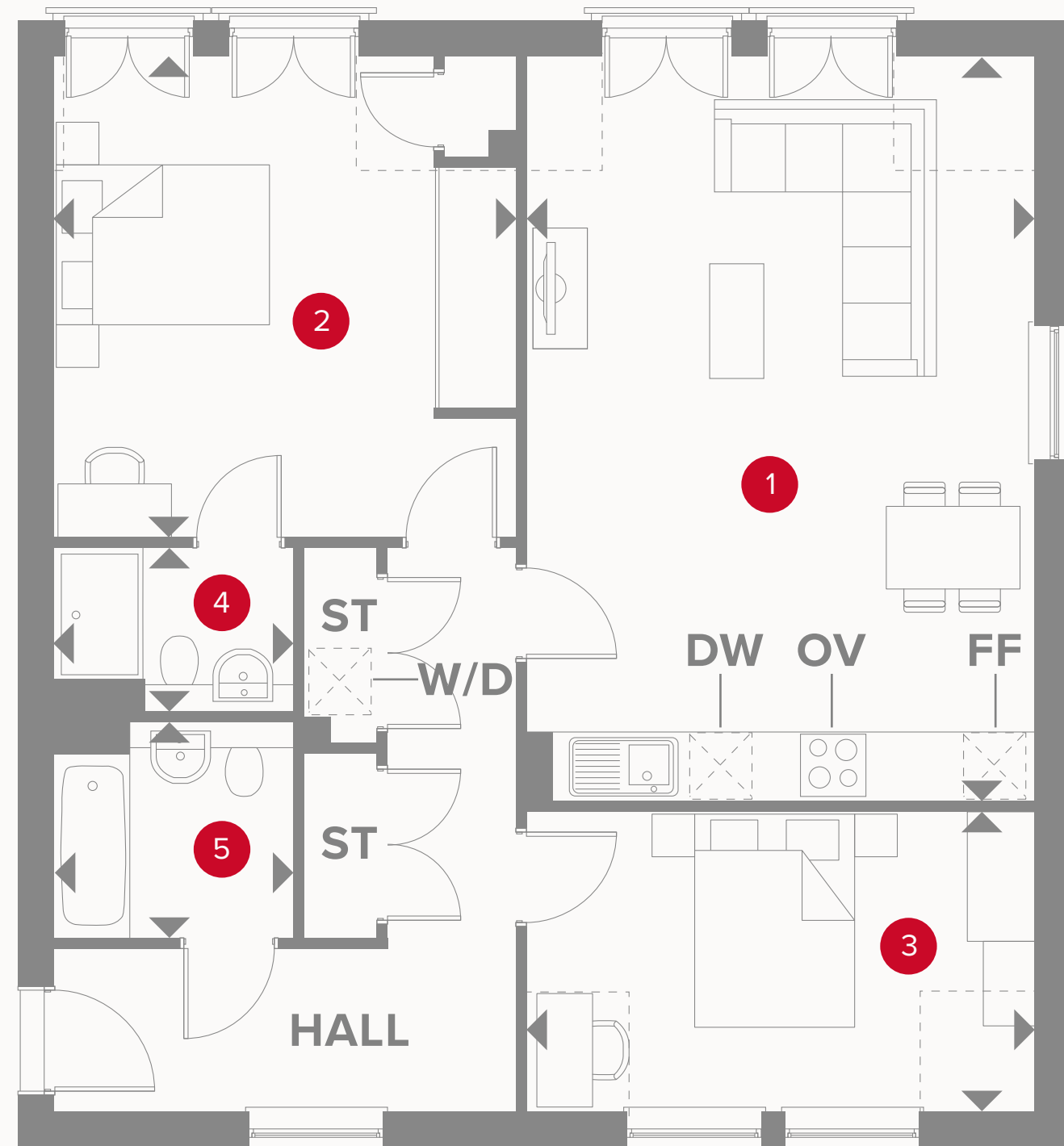
- ST** Storage cupboard
- W/D** Washer/dryer
- DW** Optional dishwasher space

- C/S** Cycle Store
- B/S** Bin Store
- Lift

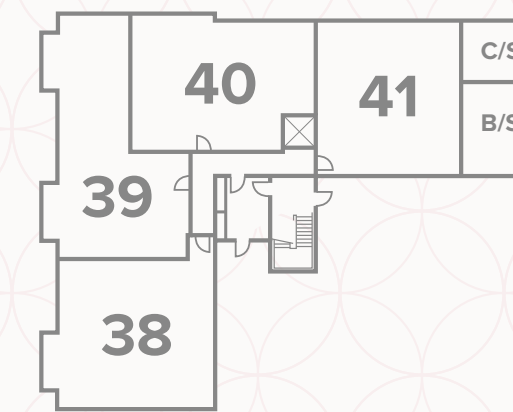


Customers should note this illustration is an example of the apartment types. All dimensions indicated are approximate and the furniture layout is for illustrative purposes only. Homes may be 'handed' (mirror image) versions of the illustrations, and may be detached, semi-detached or terraced. Materials used may differ from plot to plot including render and roof tile colours. Detailed plans and specifications are available for inspection for each plot at our Sales Centre during working hours and customers must check their individual specifications prior to making a reservation.

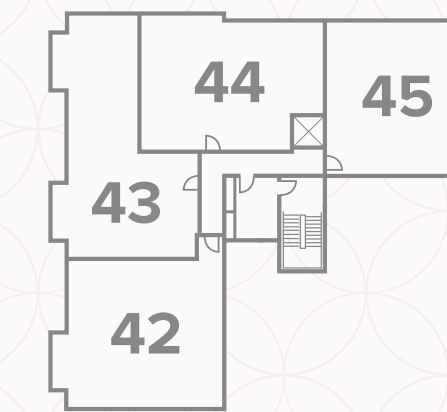
APARTMENT 49



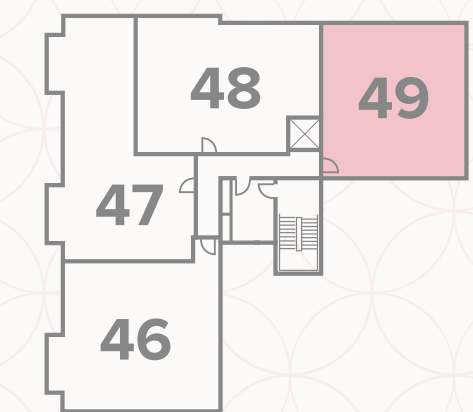
1	Lounge/Kitchen/Dining	22'5" x 15'2"	6.80m x 4.60 m
2	Bedroom 1	14'5" x 13'8"	4.40m x 4.20 m
3	Bedroom 2	15'2" x 9'0"	4.60m x 2.70 m
4	En-suite	7'2" x 4'9"	2.20m x 1.50 m
5	Bathroom	7'2" x 6'5"	2.20m x 2.00 m



Ground Floor



First Floor



Second Floor

KEY

Hob
 Oven
 Fridge/freezer
 Dimensions start

Storage cupboard
 Washer/dryer
 Optional dishwasher space

Cycle Store
 Bin Store

**CONSUMER
CODE FOR
HOME BUILDERS**
www.consumercode.co.uk

Customers should note this illustration is an example of the apartment types. All dimensions indicated are approximate and the furniture layout is for illustrative purposes only. Homes may be 'handed' (mirror image) versions of the illustrations, and may be detached, semi-detached or terraced. Materials used may differ from plot to plot including render and roof tile colours. Detailed plans and specifications are available for inspection for each plot at our Sales Centre during working hours and customers must check their individual specifications prior to making a reservation.

PLAN YOUR DREAM HOME



KITCHEN

Kitchen Styles

A range of quality Symphony kitchen styles are available. Please see sales consultant for details.

Work Surfaces

A range of quality Silestone work surfaces are available. Please see sales consultant for details.

Upstand

100mm high matching upstand above work surfaces.

Black glass or Stainless steel Splashback

Bowl & Tap

Stainless steel 1.5 bowl sink with chrome mixer tap.

Appliances

- 60cm Ceramic Hob
- Single oven
- Cooker Hood
- Integrated fridge/freezer
- Freestanding washer dryer



INTERIOR

Walls

Crown white emulsion paint finish.

Internal Door Furniture

Chrome effect door furniture from Carlisle Brass. Atalaya Lever on Round Rose.

Architrave

V profile MDF, satin white paint finish.

Skirting Boards

V profile MDF, satin white paint finish to match architrave.

Wardrobes

Hammonds sliding closet system, with easy close motion to bedroom 1. Refer to wardrobe choices.

Ceilings

Crown white emulsion paint finish.

Central Heating

Full gas central heating with energy efficient wall mounted boiler in all apartments. Please see sales consultant for details.

Radiators

Myson round top radiators.

Electrical Sockets & Switch Plates

BG low profile white electrical switch and socket plates. Refer to drawings for types and locations.

Lighting

Chrome downlights to kitchen area, bathroom and en-suite. LED under cupboard downlights to kitchen wall units where shown on kitchen layout. Pendant and batten lighting points to remaining areas.

Consumer Unit

Surface mounted BG consumer unit or semi recessed BG consumer unit to be installed. Please refer to drawings for locations.

Smoke Detectors

Fitted as standard to every property. These are connected to the mains electricity supply and have provision for battery back up in the event of a power cut.

OUR LUXURY
SPECIFICATIONS
ARE CAREFULLY
CONSIDERED
**AND BEAUTIFULLY
DESIGNED TO MAKE
THE MOST OF YOUR
NEW HOME**



BATHROOM & EN-SUITE

Bathroom & En-suite styles

Concept Cube white finish by Ideal Standard.

Concealed toilet cisterns behind half height tiled walls with chrome effect dual flush.

Shower to En-suite

Shower Valve Alto Ecotherm bar valve.

Shower Tray Acrylic capped low profile shower tray.

Shower Screen Polished chrome effect finish shower door.

Brassware

Basin Sottini Tesino Basin mixer tap with single lever control complete with click plug waste.

Bath Sottini Tesino Mixer tap with single lever control complete with click plug waste.

Lighting

Chrome downlights

Bath

Tempo Arc bath with Meridian Isocore

Bath Panel white finish.

Shower over bath with screen.

Towel Warmer

Chrome towel warmer to Bathroom and En-suite.

Wall Tiles to Bathroom & En-suite

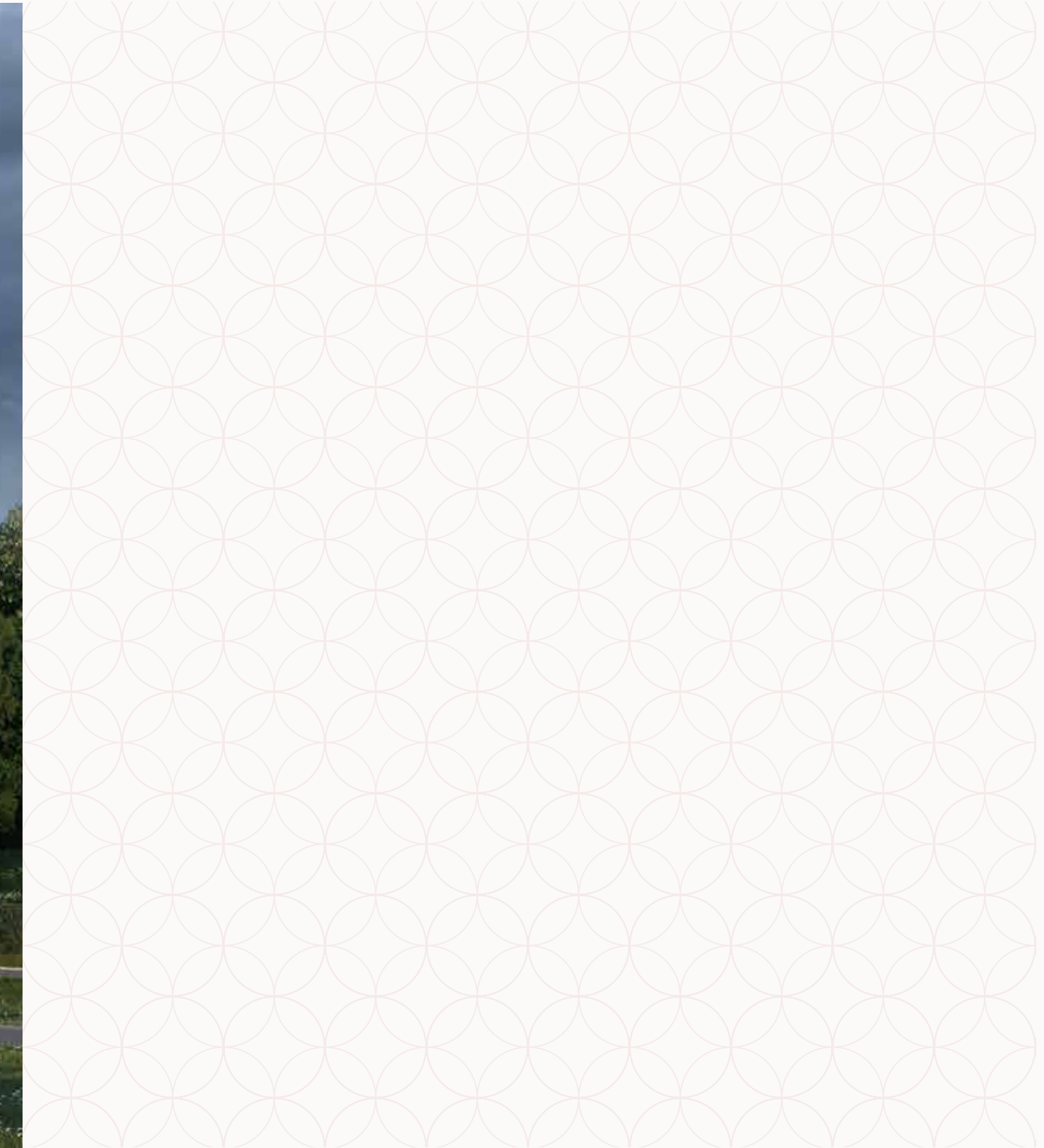
Porcelanosa half height wall tiling to Bathroom and En-suite, refer to ceramic tile choices.

Shaver Socket to Bathroom & En-suite

Socket in Bathroom and En-suite.

Finish to match electrical plates.

(where applicable).



COMMUNAL

Main Entrance Door

Steel or GRP door.
Style of door to be as indicated on elevations.

Rear Door

Steel or GRP door.
Style of door to be as indicated on elevations.

Internal/Lobby doors

White painted plain door.

Skirtings

Satin white paint finish.

Staircase

Precast concrete staircase with steel balustrade and plastic coated handrail.

Ceiling Finish

White emulsion paint finish.

Wall Finish

White emulsion paint finish.

Door Entry System

Video door entry system.

Internal Lighting

PIR lighting control sensors.

Post Boxes

Grey bank of boxes.

Floor Covering

Carpet to internal lobby areas & staircases.
Matwell & mats to main entrance doors.

Landlords Cupboard

Meter/Landlords cupboard as shown on construction drawings.

Paving

Buff Riven faced flags as indicated on drawing.

Lift

Cycle Store

Bin Store