



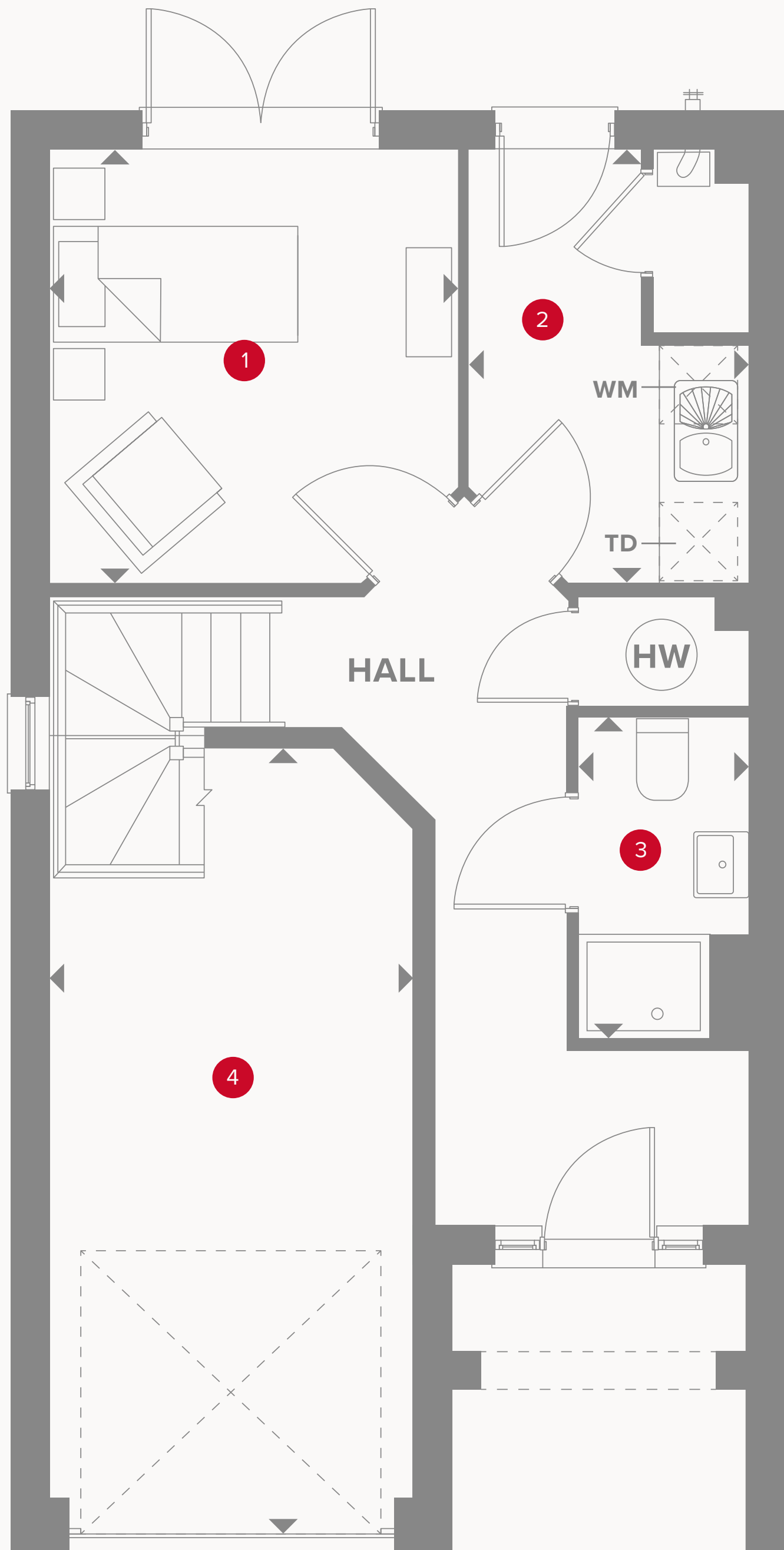
HERITAGE

- REDROW -

THE KENSINGTON END

FOUR BEDROOM HOME

 **REDROW**



Plot 194 is handed

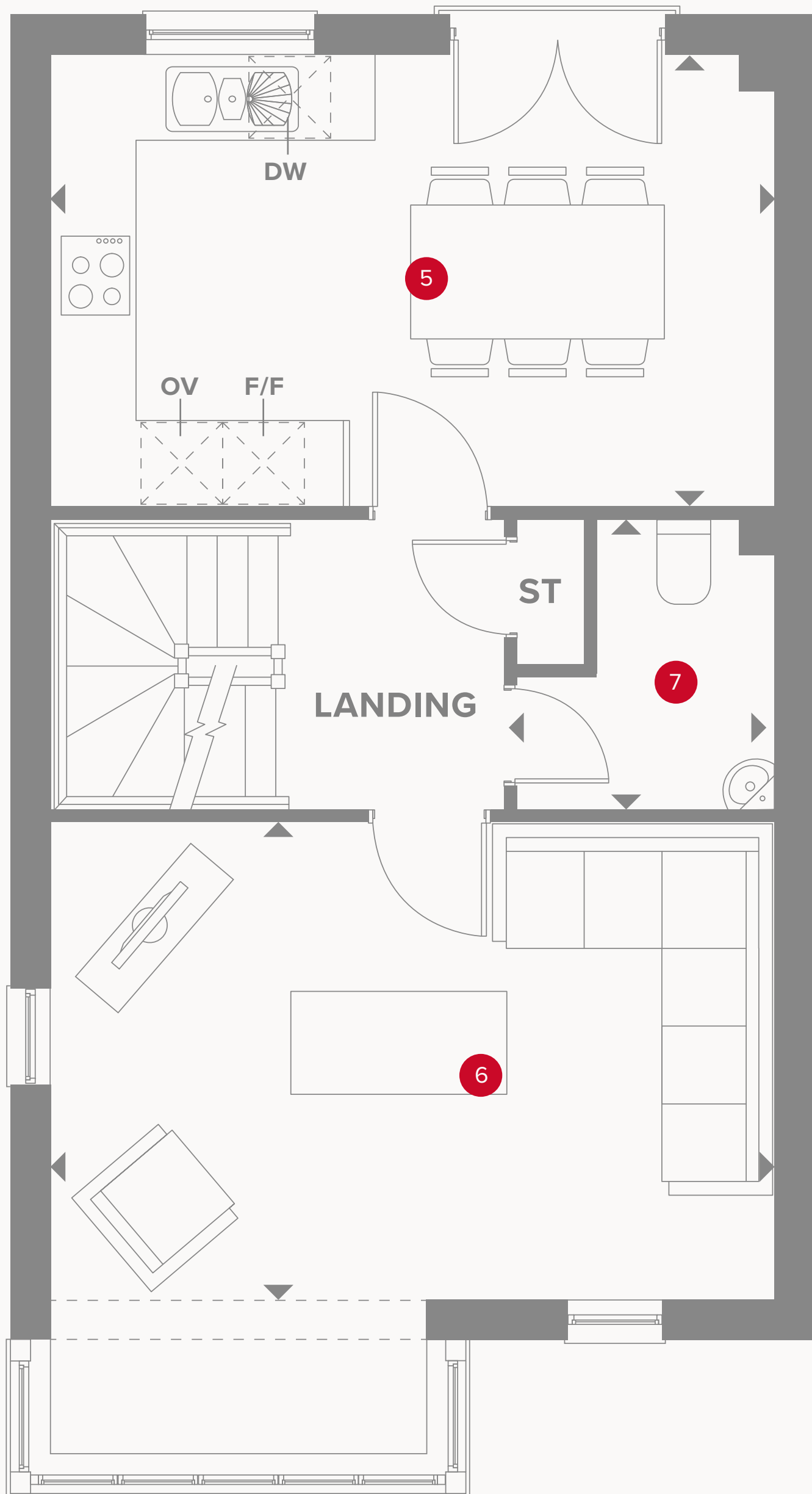
THE KENSINGTON END GROUND FLOOR

1	Study/Bedroom 4	10'8" x 10'1"	3.27 x 3.09 m
2	Utility	10'9" x 7'0"	3.30 x 2.14 m
3	Cloaks 1	8'0" x 4'2"	2.46 x 1.28 m
4	Garage	19'3" x 9'1"	5.82 x 2.77 m



KEY

- TD** Tumble dryer space
- WM** Washing machine space
- HW** Hot water storage
- ◀ Dimensions start




THE KENSINGTON END FIRST FLOOR

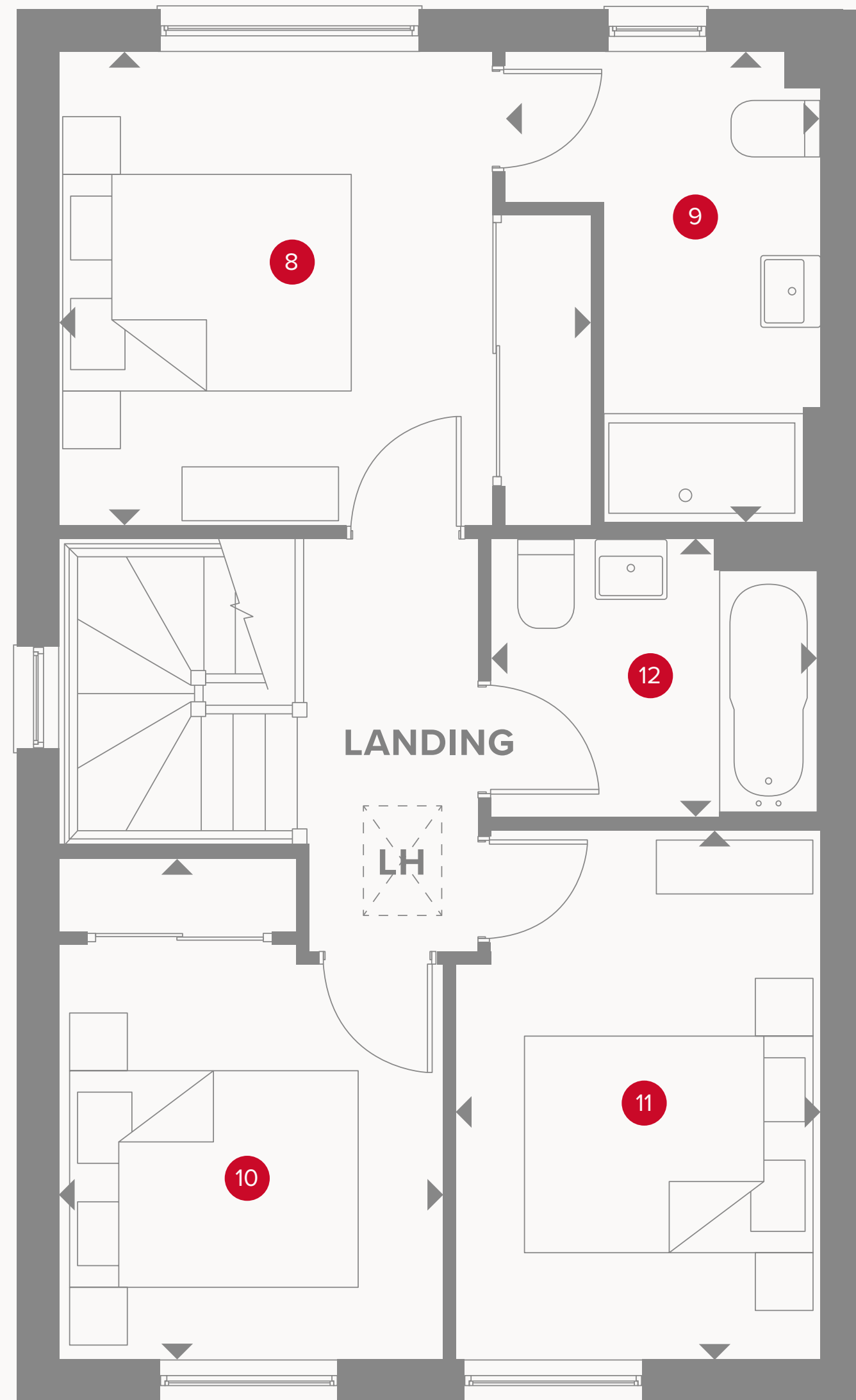
5	Kitchen/Dining	17'4" x 10'8"	5.30 x 3.27 m
6	Lounge	17'4" x 11'5"	5.30 x 3.50 m
7	Cloaks 2	7'0" x 6'1"	2.14 x 1.87 m



KEY

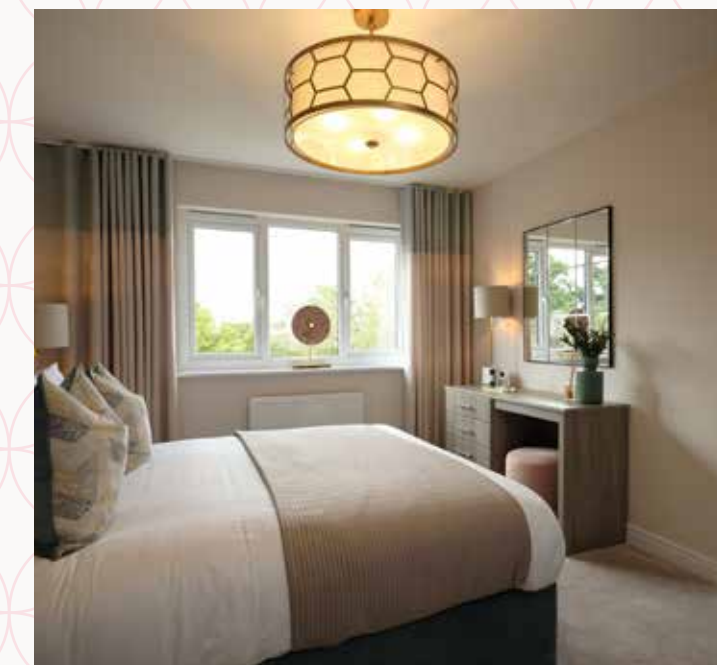
-  Hob
- OV** Oven
- FF** Fridge/freezer

- DW** Dish washer space
- ST** Storage cupboard
-  Dimensions start



THE KENSINGTON END SECOND FLOOR

8	Bedroom 1	12'11" x 10'9"	3.70 x 3.30 m
9	En-suite	10'9" x 7'2"	3.30 x 2.19 m
10	Bedroom 2	11'5" x 8'9"	3.50 x 2.67 m
11	Bedroom 3	12'1" x 8'3"	3.70 x 2.53 m
12	Bathroom	7'6" x 6'4"	2.30 x 1.95 m



**CONSUMER
CODE FOR
HOME BUILDERS**
www.consumercode.co.uk

Customers should note this illustration is an example of the Kensington End house type. All dimensions indicated are approximate and the furniture layout is for illustrative purposes only. Homes may be 'handed' (mirror image) versions of the illustrations, and may be detached, semi-detached or terraced. Materials used may differ from plot to plot including render and roof tile colours. Detailed plans and specifications are available for inspection for each plot at our Sales Centre during working hours and customers must check their individual specifications prior to making a reservation.

KEY

- ◀ Dimensions start
- LH Loft hatch