



**HERITAGE**

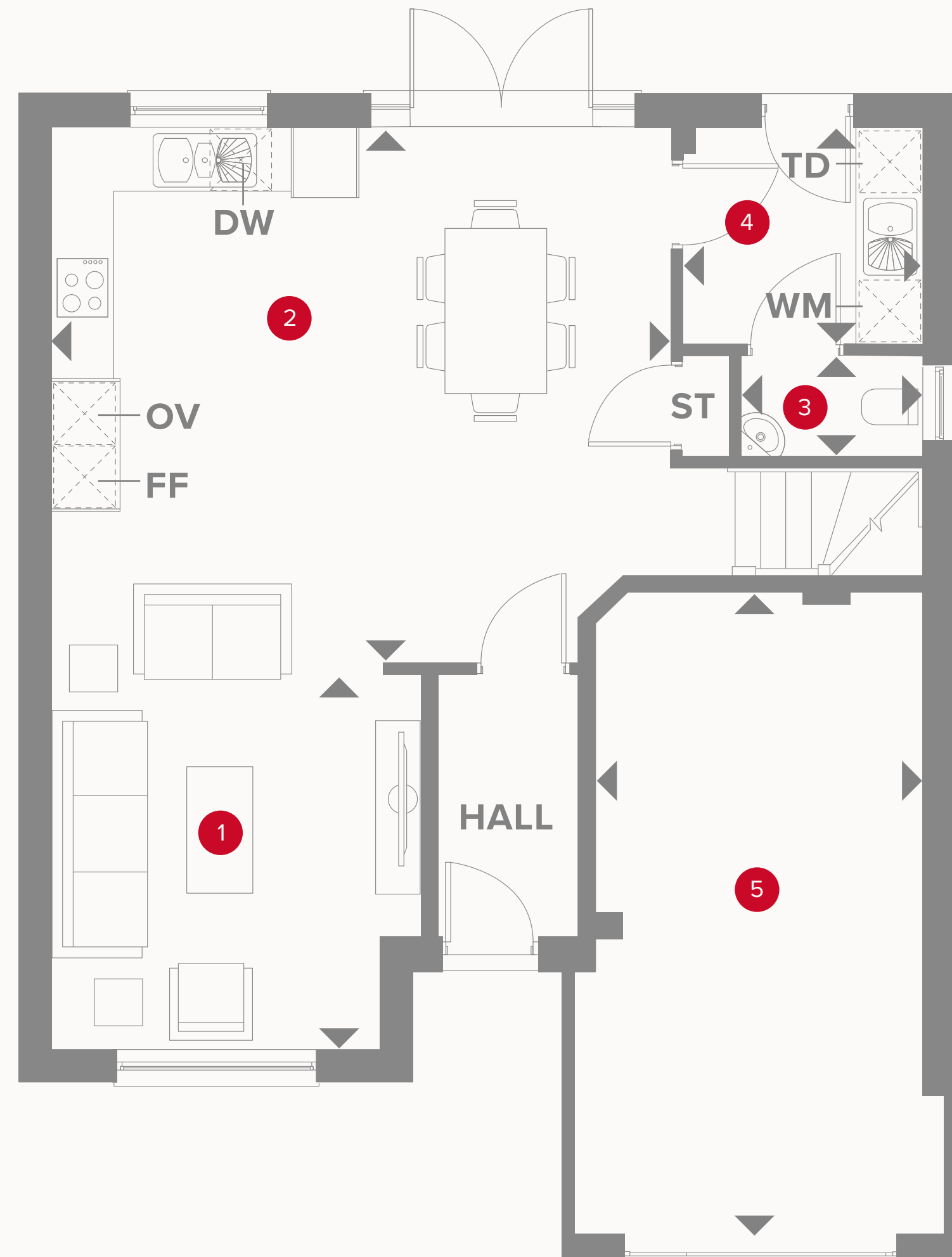
- REDROW -

# THE WINDSOR

FOUR BEDROOM HOME







# THE WINDSOR GROUND FLOOR

1	Lounge	11'3" x 11'0"	3.47 x 3.37 m
2	Kitchen/ Dining	18'4" x 15'9"	5.63 x 4.87 m
3	Cloaks	5'6" x 3'1"	1.72 x 0.97 m
4	Utility	7'4" x 6'5"	2.26 x 1.99 m
5	Garage	19'0" x 9'8"	5.81 x 3.00 m

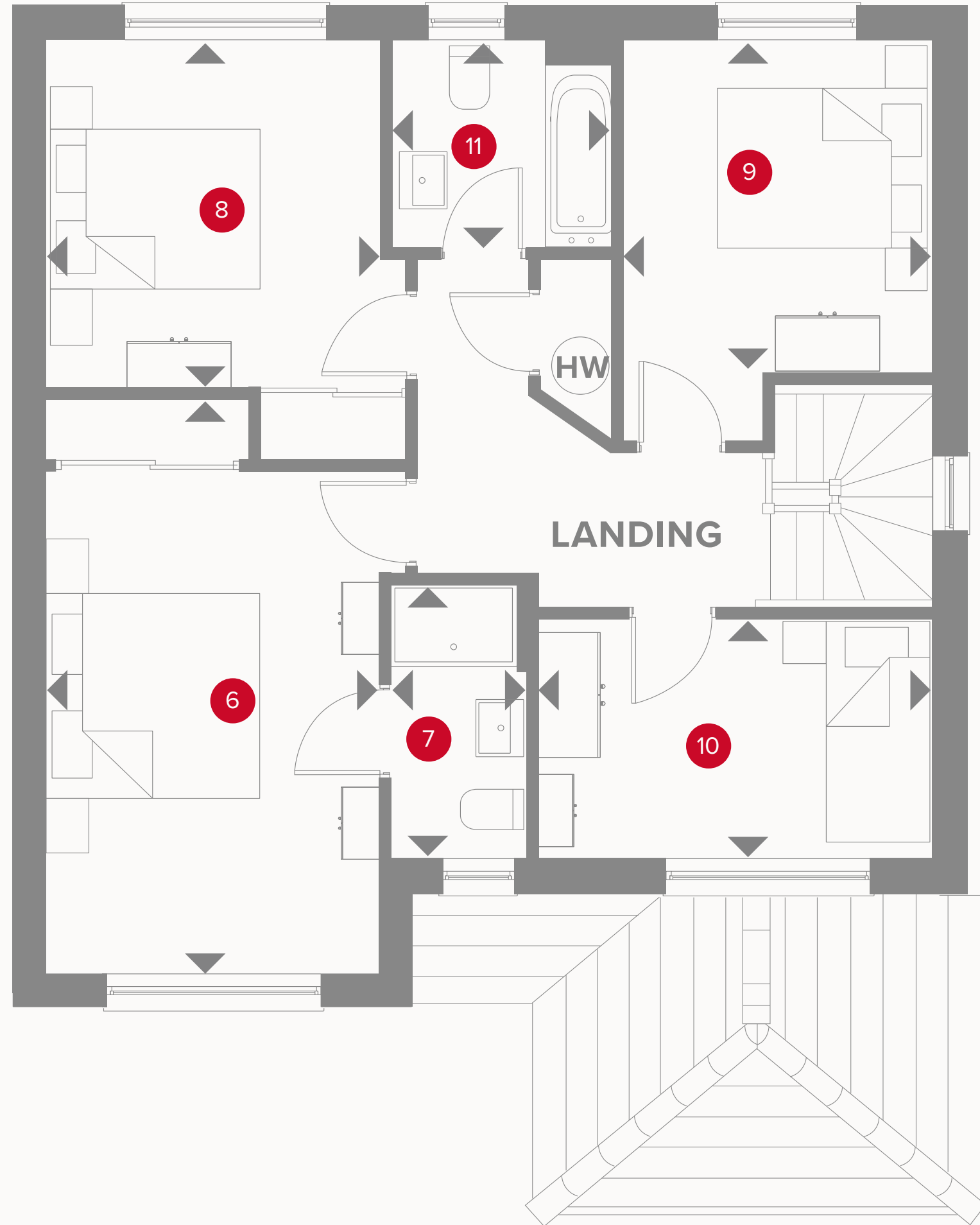


Plots 399 & 401 are handed

## KEY

- Hob
- OV** Oven
- FF** Fridge/freezer
- TD** Tumble dryer space

- Dimensions start
- ST** Storage cupboard
- WM** Washing machine space
- DW** Optional dishwasher



# THE WINDSOR FIRST FLOOR

6	Bedroom 1	17'0" x 9'8"	5.18 x 2.99 m
7	En-suite	8'2" x 3'9"	2.51 x 1.21 m
8	Bedroom 2	10'3" x 9'7"	3.16 x 2.97 m
9	Bedroom 3	9'9" x 9'0"	3.04 x 2.75 m
10	Bedroom 4	11'5" x 7'2"	3.52 x 2.20 m
11	Bathroom	6'8" x 6'4"	2.09 x 1.97 m



Plots 399 & 401 are handed

## KEY

- ◀ Dimensions start
- HW Hot water storage

**CONSUMER  
CODE FOR  
HOME BUILDERS**

[www.consumercode.co.uk](http://www.consumercode.co.uk)

Customers should note this illustration is an example of the Windsor house type. All dimensions indicated are approximate and the furniture layout is for illustrative purposes only. Homes may be 'handed' (mirror image) versions of the illustrations, and may be detached, semi-detached or terraced. Materials used may differ from plot to plot including render and roof tile colours. Detailed plans and specifications are available for inspection for each plot at our Sales Centre during working hours and customers must check their individual specifications prior to making a reservation.