



HERITAGE

- REDROW -

THE GRANTHAM

FOUR BEDROOM MID-TERRACE HOME




THE GRANTHAM GROUND FLOOR

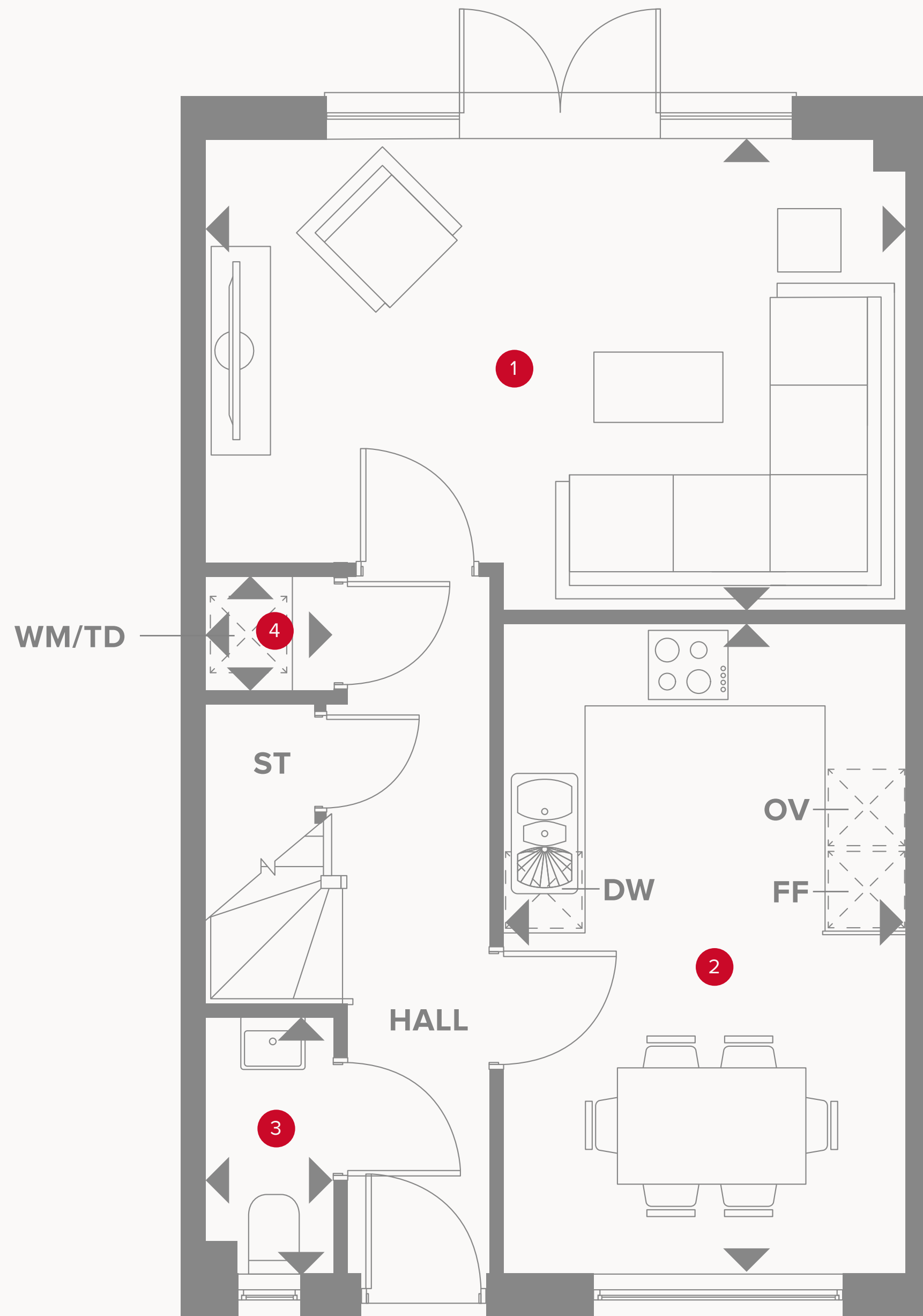
1	Lounge	16'8" x 11'3"	5.09 x 3.43 m
2	Kitchen/Dining	15'6" x 9'7"	4.73 x 2.93 m
3	Cloaks	6'2" x 3'0"	1.87 x 0.93 m
4	Laundry	3'1" x 2'7"	0.94 x 0.84 m



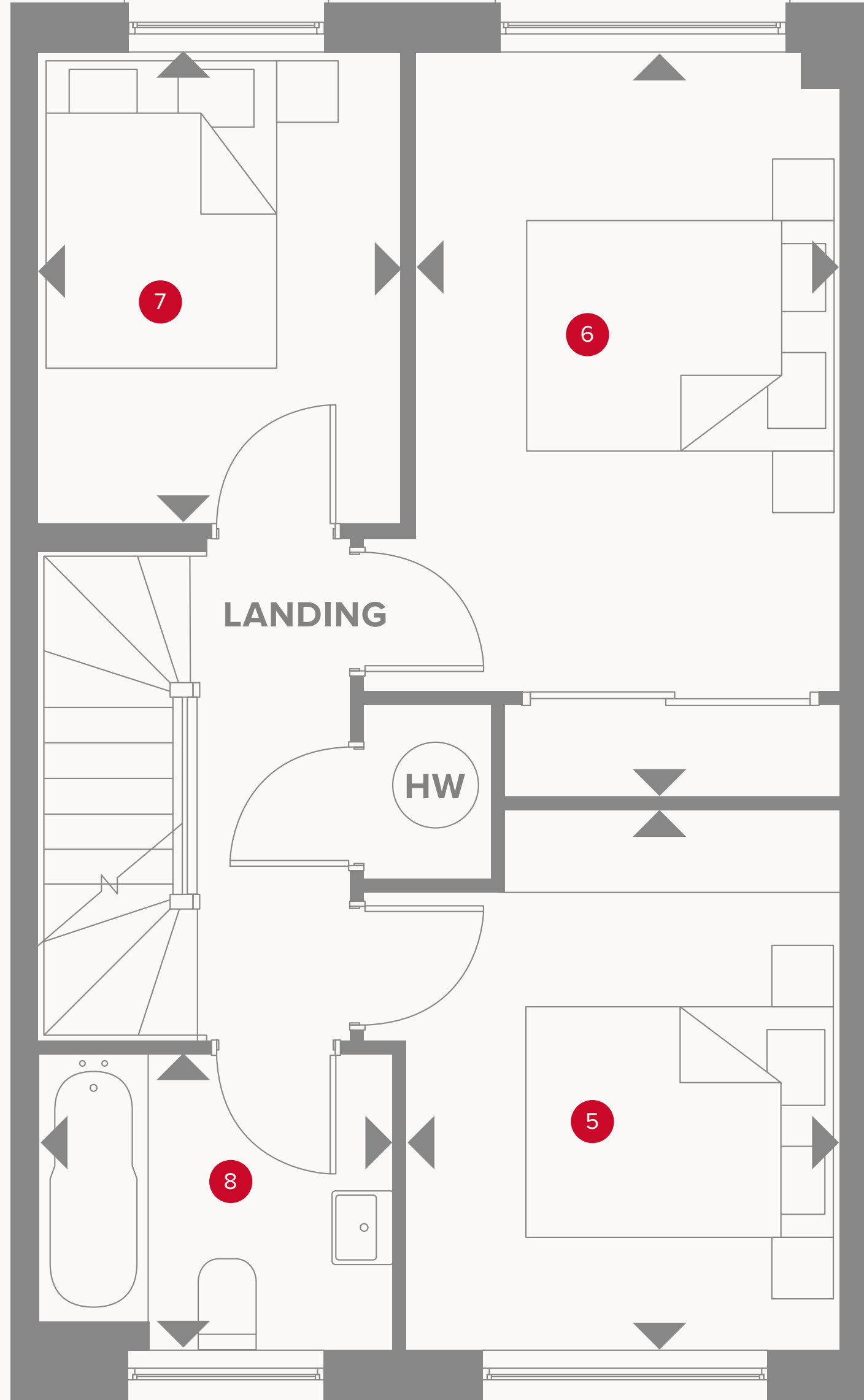
KEY

-  Hob
- OV** Oven
- FF** Fridge/freezer
- WM** Washing machine space

-  Dimensions start
- ST** Storage cupboard
- DW** Dish washer space



Plot 582 is handed



Plots 582 is handed

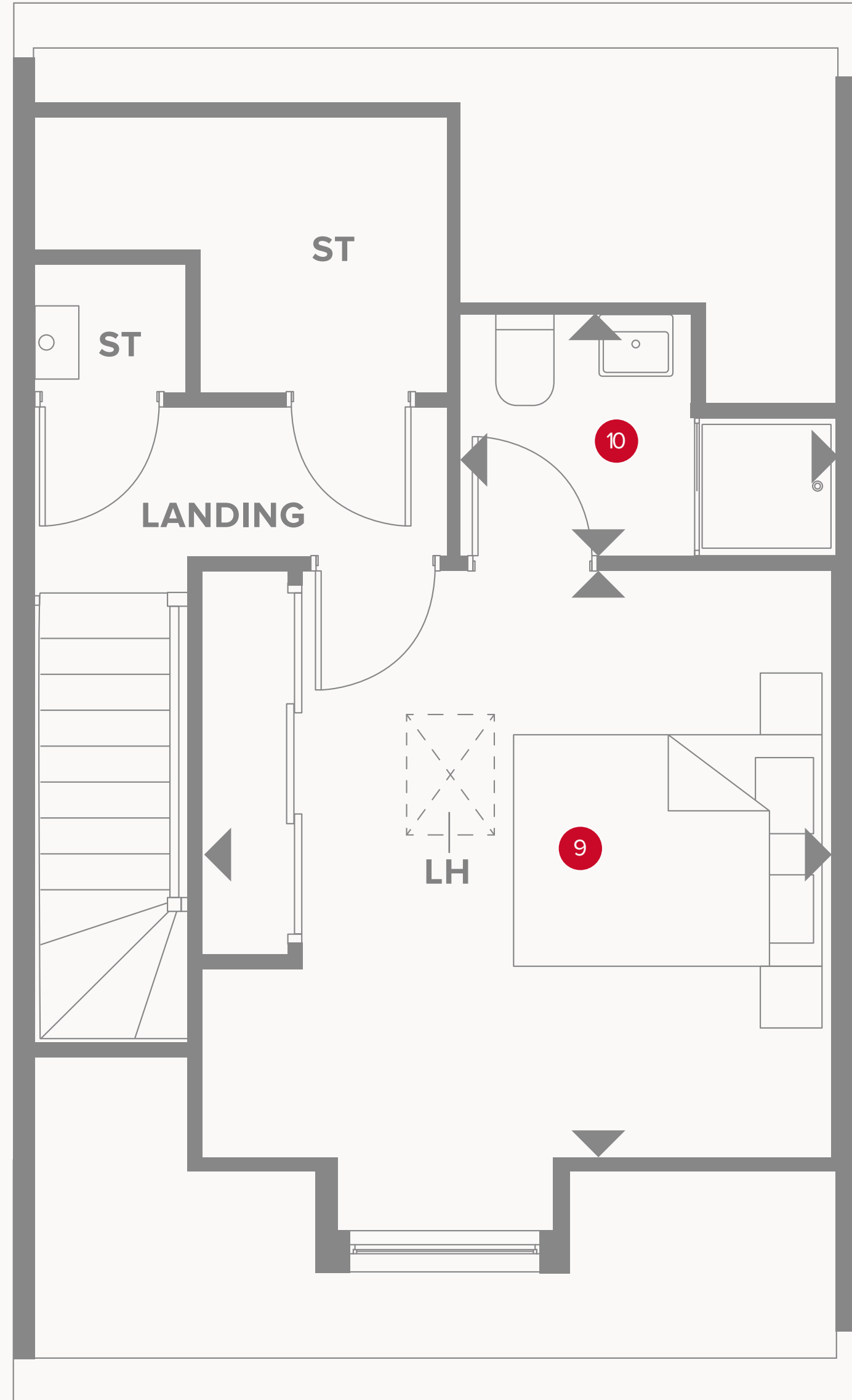
THE GRANTHAM FIRST FLOOR

5	Bedroom 2	15'6" x 8'10"	4.73 x 2.70 m
6	Bedroom 3	11'3" x 9'0"	3.43 x 2.75 m
7	Bedroom 4	9'5" x 7'7"	3.00 x 2.30 m
8	Bathroom	7'5" x 6'2"	2.26 x 1.87 m



KEY

- ◀ Dimensions start
- HW** Hot water cylinder



Plots 582 is handed

THE GRANTHAM SECOND FLOOR

9	Bedroom	13'7" x 13'1"	4.20 x 4.00 m
10	En-suite	7'10" x 5'1"	2.38 x 1.54 m



**CONSUMER
CODE FOR
HOME BUILDERS**
www.consumercode.co.uk

Customers should note this illustration is an example of the Grantham Mid house type. All dimensions indicated are approximate and the furniture layout is for illustrative purposes only. Homes may be 'handed' (mirror image) versions of the illustrations, and may be detached, semi-detached or terraced. Materials used may differ from plot to plot including render and roof tile colours. Detailed plans and specifications are available for inspection for each plot at our Customer Experience Suites during working hours and customers must check their individual specifications prior to making a reservation. Computer generated images are for indicative purposes only.

KEY
 ◀ Dimensions start
ST Storage cupboard
LH Loft hatch