

Cherry

Three bedroom home



Where you
want to be



Harwood
Homes

Cherry

Three bedroom home

The Cherry has been crafted with a modern design, providing flexibility spaces that accommodate many different lifestyles. This marvellous home offers 3 bedrooms, with an en-suite to the master, an open-plan kitchen/dining area, and a lounge.

Ground floor

Lounge	16'10" x 12'2"	5.13 x 3.70 m
Kitchen/ Dining	16'1" x 9'11"	4.90 x 3.03 m
Cloaks	5'7" x 3'8"	1.70 x 1.11 m

First floor

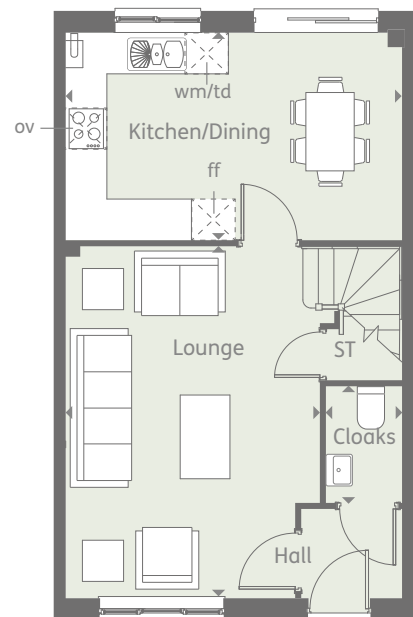
Bedroom 1	16'0" x 9'11"	4.90 x 3.02 m
En-suite	7'3" x 4'6"	2.20 x 1.37 m
Bedroom 2	9'3" x 8'11"	2.82 x 2.71 m
Bedroom 3	9'3" x 6'11"	2.82 x 2.10 m
Bathroom	6'11" x 5'7"	2.11 x 1.70 m

Customers should note this illustration is an example of the Cherry house type. All dimensions indicated are approximate and the furniture layout is for illustrative purposes only. Homes may be 'handed' (mirror image) versions of the illustrations, and may be detached, semi-detached or terraced. Materials used may differ from plot to plot including render and roof tile colours. Detailed plans and specifications are available for inspection for each plot at our Sales Centre during working hours and customers must check their individual specifications prior to making a reservation.

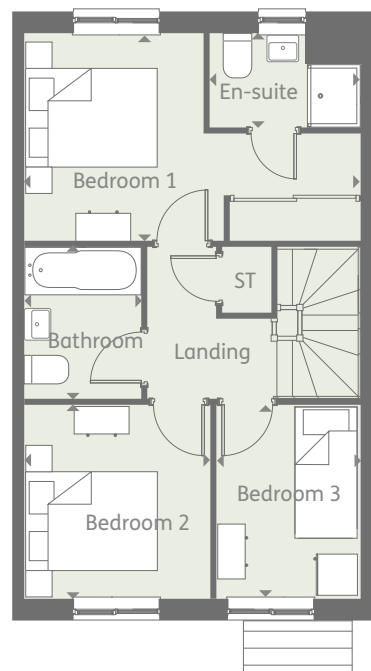
KEY

 Hob	 Tumble dryer space
 Oven	 Cupboard
 Fridge/freezer	 Washing machine space
 Dishwasher	 Loft

Ground floor



First floor



**CONSUMER
CODE FOR
HOME BUILDERS**

www.consumercode.co.uk

† Denotes where dimensions are taken from. All wardrobes are subject to site specification. Please see Sales Consultant for further details.

THINK 204325_EF_CY4_M.1 RV

Discover where you want to be and visit
harwoodhomes.co.uk


**Harwood
Homes**