

# Maple

Two bedroom bungalow



Where you  
want to be



**Harwood**  
Homes

# Maple

## Two bedroom bungalow

The Maple is a wonderful 2 bedroom home benefiting from the modern touch. The open-plan kitchen/dining area acts as the heart of the home, together with a master bedroom, spacious lounge and family bathroom.

### Ground floor

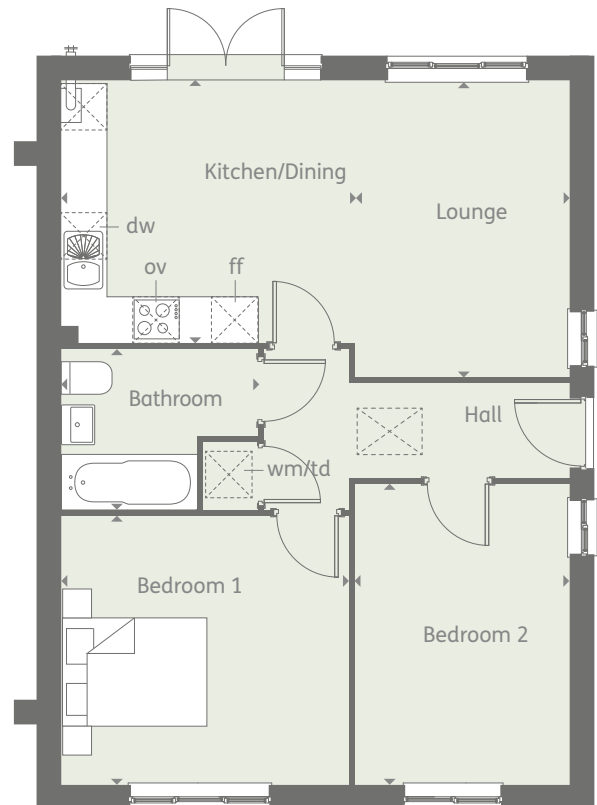
Lounge	12'8" x 9'3"	3.89 x 2.83 m
Kitchen/ Dining	12'6" x 11'3"	3.85 x 3.44 m
Bedroom 1	12'3" x 11'6"	3.76 x 3.53 m
Bedroom 2	12'10" x 9'2"	3.95 x 2.81 m
Bathroom	8'4" x 6'8"	2.57 x 2.06 m

Customers should note this illustration is an example of the Maple house type. All dimensions indicated are approximate and the furniture layout is for illustrative purposes only. Homes may be 'handed' (mirror image) versions of the illustrations, and may be detached, semi-detached or terraced. Materials used may differ from plot to plot including render and roof tile colours. Detailed plans and specifications are available for inspection for each plot at our Sales Centre during working hours and customers must check their individual specifications prior to making a reservation.

#### KEY

 Hob	td	Tumble dryer space	
ov	Oven	ST	Cupboard
ff	Fridge/freezer	wm	Washing machine space
dw	Dishwasher		Loft

Ground floor



**CONSUMER  
CODE FOR  
HOME BUILDERS**

[www.consumercode.co.uk](http://www.consumercode.co.uk)

◄ Denotes where dimensions are taken from. All wardrobes are subject to site specification. Please see Sales Consultant for further details.

1544498\_EF\_MAPLE\_DM.1

Discover where you want to be and visit  
[harwoodhomes.co.uk](http://harwoodhomes.co.uk)

  
**Harwood  
Homes**