



# The Warwick

*Three Bedroom Home*







# The Warwick

*Three Bedroom Home*

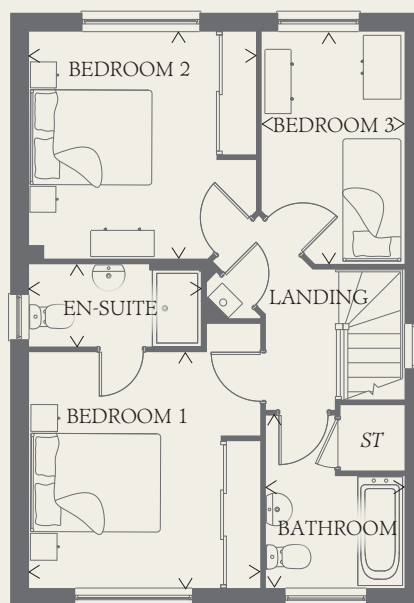
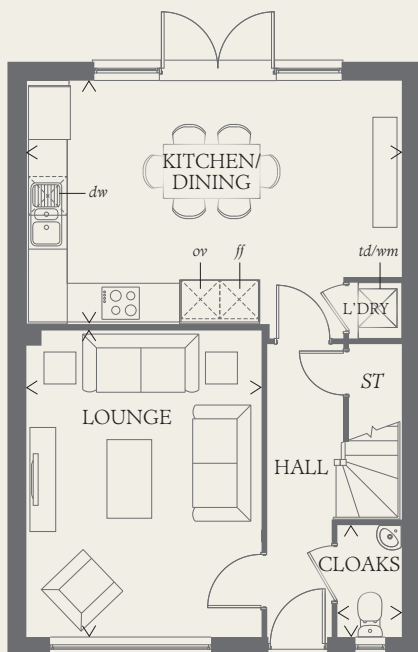




# The Warwick

## Three Bedroom Home

A sense of quality and craftsmanship is evident throughout this home. With a well designed kitchen/diner, a comfortable lounge and three spacious bedrooms, the Warwick will continue to please.



### GROUND FLOOR

LOUNGE	15'5" x 11'7"	4.71 x 3.52 m
KITCHEN/ DINING	18'11" x 12'3"	5.77 x 3.73 m
CLOAKS	5'7" x 3'3"	1.71 x 0.98 m
LAUNDRY	2'10" x 2'7"	0.87 x 0.80 m

### FIRST FLOOR

BEDROOM 1	11'11" x 11'8"	3.63 x 3.55 m
EN-SUITE	8'8" x 4'2"	2.64 x 1.28 m
BEDROOM 2	11'6" x 11'5"	3.50 x 3.49 m
BEDROOM 3	11'9" x 7'2"	3.58 x 2.19 m
BATHROOM	8'8" x 7'0"	2.65 x 2.13 m

#### CONSUMER CODE FOR HOME BUILDERS

[www.consumercode.co.uk](http://www.consumercode.co.uk)

Customers should note this illustration is an example of the Warwick house type. All dimensions indicated are approximate and the furniture layout is for illustrative purposes only. Homes may be 'handed' (mirror image) versions of the illustrations, and may be detached, semi-detached or terraced. Materials used may differ from plot to plot including render and roof tile colours. Detailed plans and specifications are available for inspection for each plot at our Sales Centre during working hours and customers must check their individual specifications prior to making a reservation.

#### KEY

- Hob
- Oven
- Fridge/freezer
- Washing machine space
- Dishwasher space

- Tumble dryer space
- Cupboard

< Denotes where dimensions are taken from. All wardrobes are subject to site specification. Please see Sales Consultant for further details.

THINK\_EF\_WARW\_DM.5