



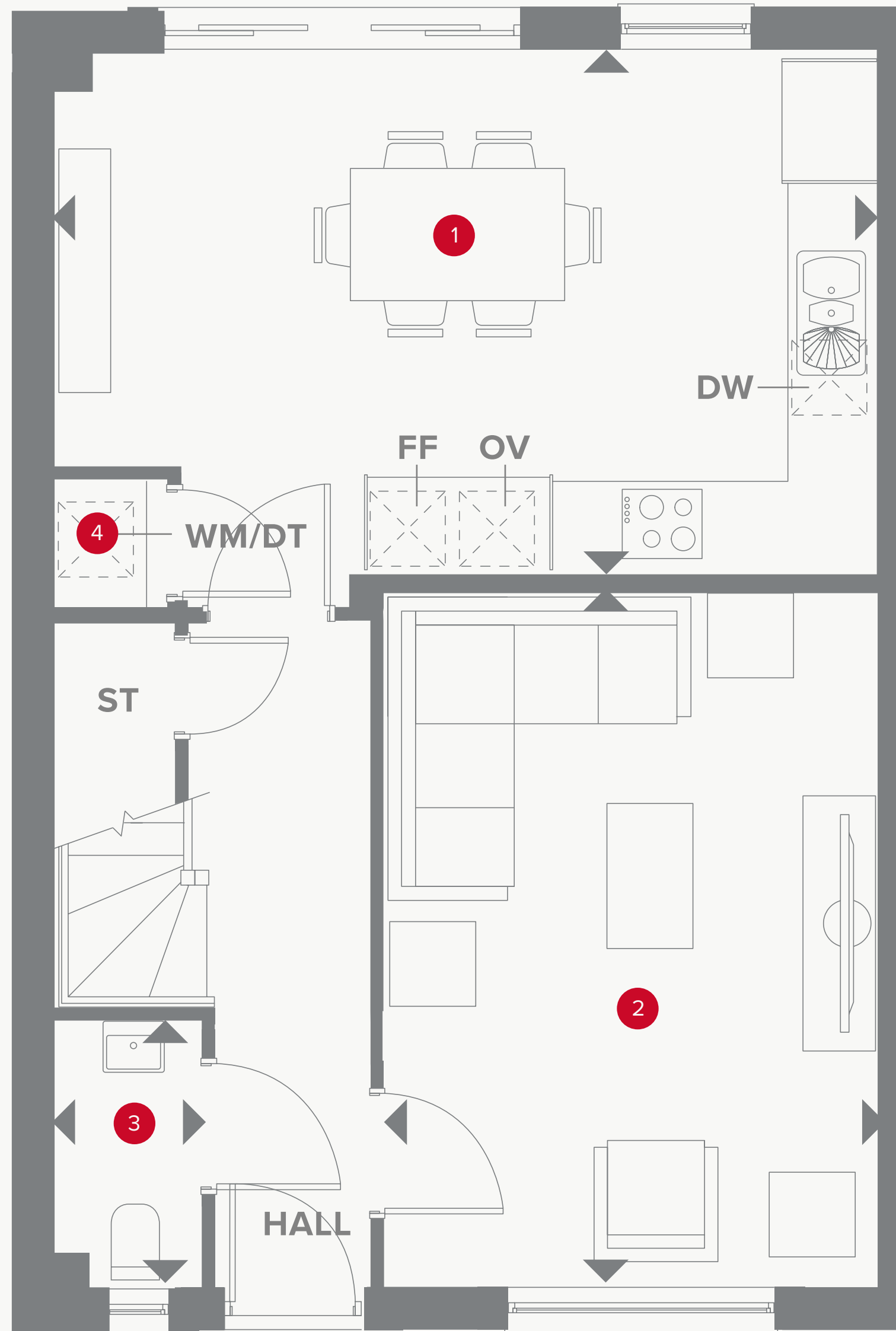
HERITAGE

- REDROW -

THE YORK

FOUR BEDROOM HOME





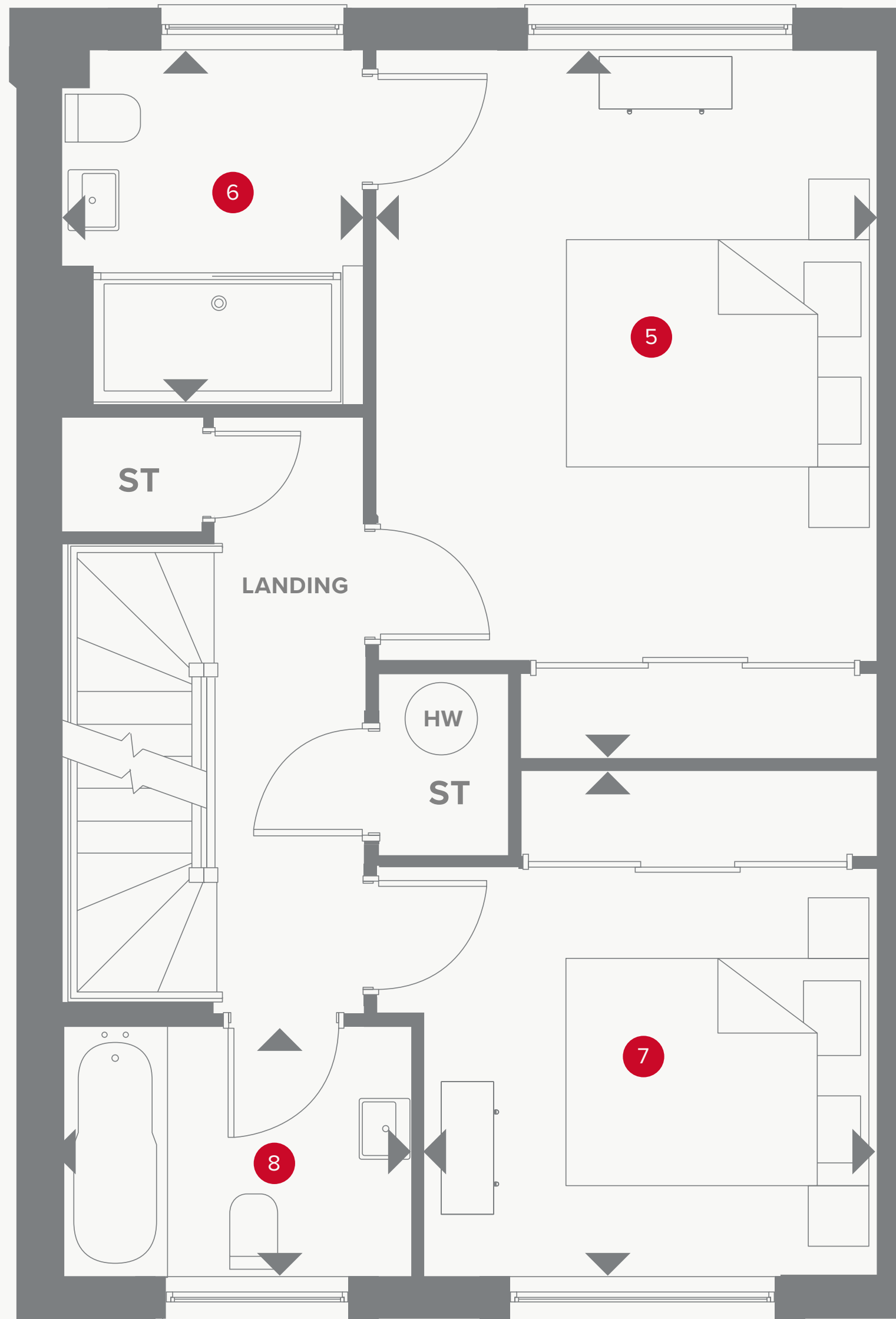
THE YORK GROUND FLOOR

1	Kitchen/Dining	18'2" x 11'6"	5.55 x 3.53 m
2	Lounge	15'4" x 11'6"	4.68 x 3.53 m
3	Cloaks	5'9" x 3'2"	1.79 x 0.98 m
4	Laundry	2'9" x 2'5"	0.87 x 0.75 m



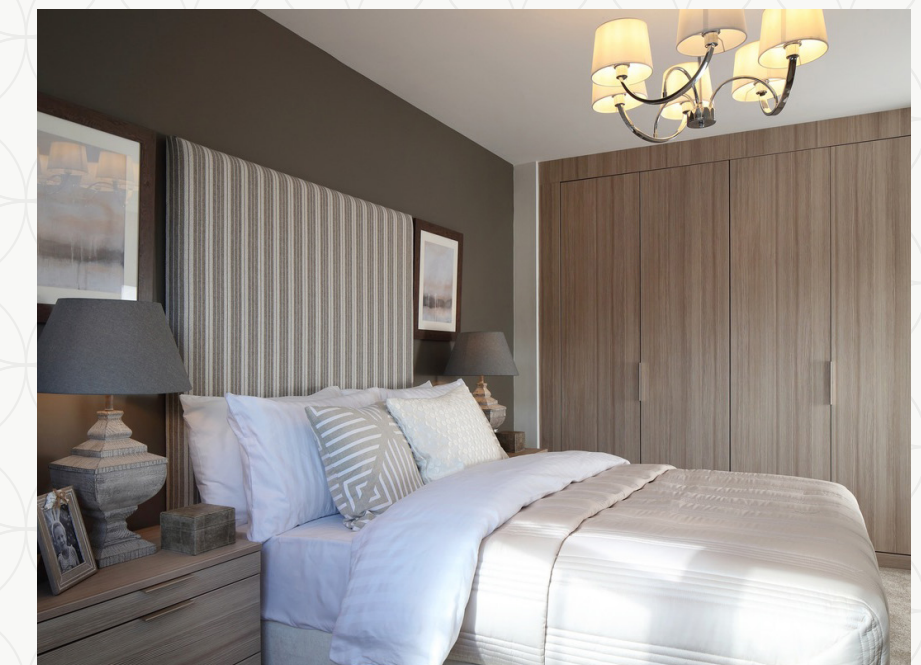
KEY

	Hob		Dimensions start
OV	Oven	ST	Storage cupboard
FF	Fridge/freezer	WM	Washing machine space
TD	Tumble dryer space	DW	Dish washer space



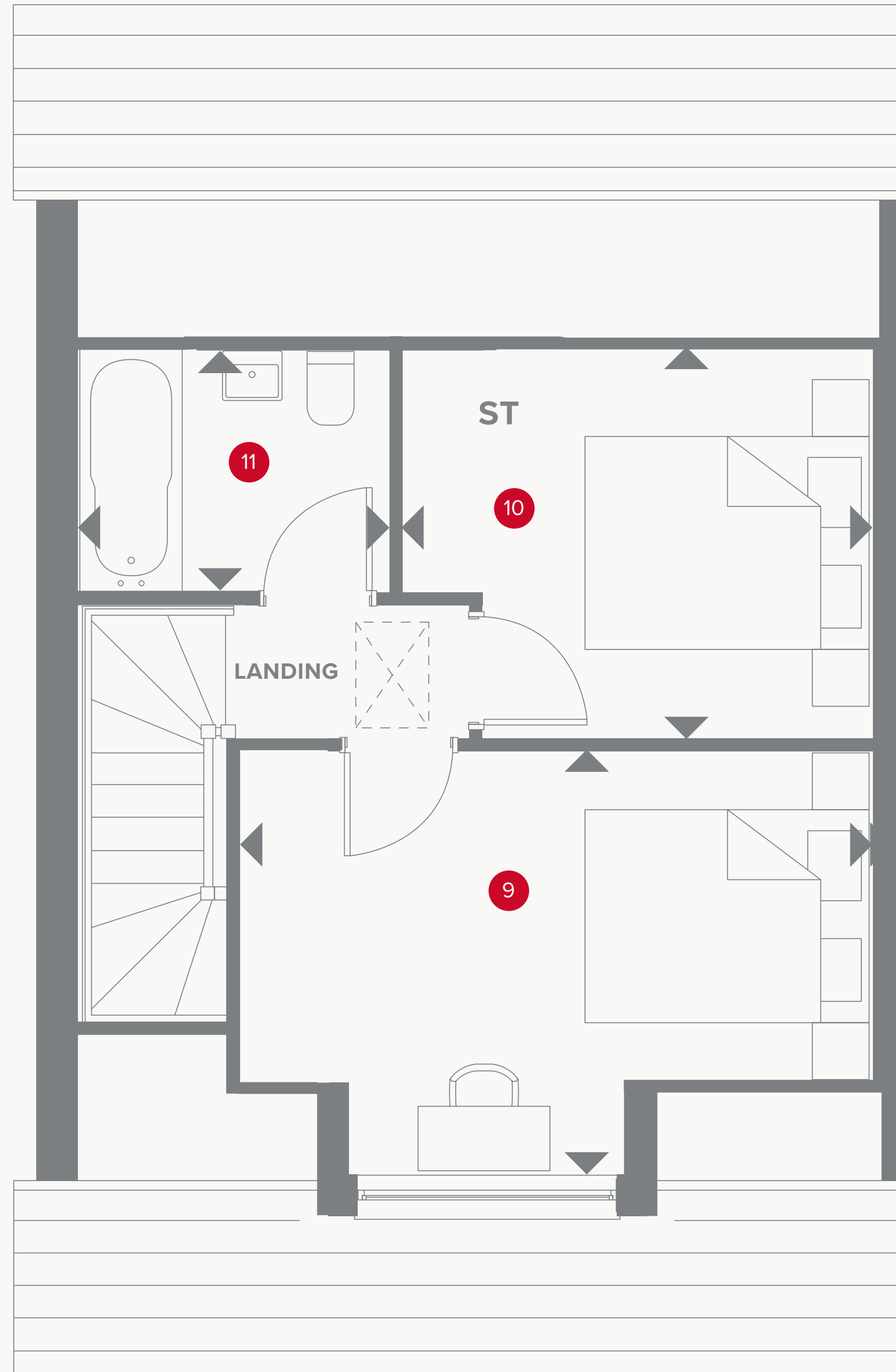
THE YORK FIRST FLOOR

5	Bedroom 1	15'8" x 11'2"	4.82 x 3.42 m
6	En-suite	7'9" x 6'7"	2.40 x 2.05 m
7	Bedroom 2	11'3" x 10'1"	3.45 x 3.09 m
8	Bathroom 1	7'8" x 5'6"	2.38 x 1.71 m



KEY

- ◀ Dimensions start
- ST** Storage cupboard
- HW** Hot water storage



THE YORK SECOND FLOOR

9	Bedroom 3	14'5" x 9'7"	4.43 x 2.95 m
10	Bedroom 4	10'8" x 8'9"	3.28 x 2.72 m
10	Bathroom 2	7'1" x 5'6"	2.16 x 1.71 m



KEY

- ◀ Dimensions start
- ST Storage cupboard



Customers should note this illustration is an example of the York house type. All dimensions indicated are approximate and the furniture layout is for illustrative purposes only. Homes may be 'handed' (mirror image) versions of the illustrations, and may be detached, semi-detached or terraced. Materials used may differ from plot to plot including render and roof tile colours. Detailed plans and specifications are available for inspection for each plot at our Sales Centre during working hours and customers must check their individual specifications prior to making a reservation.