



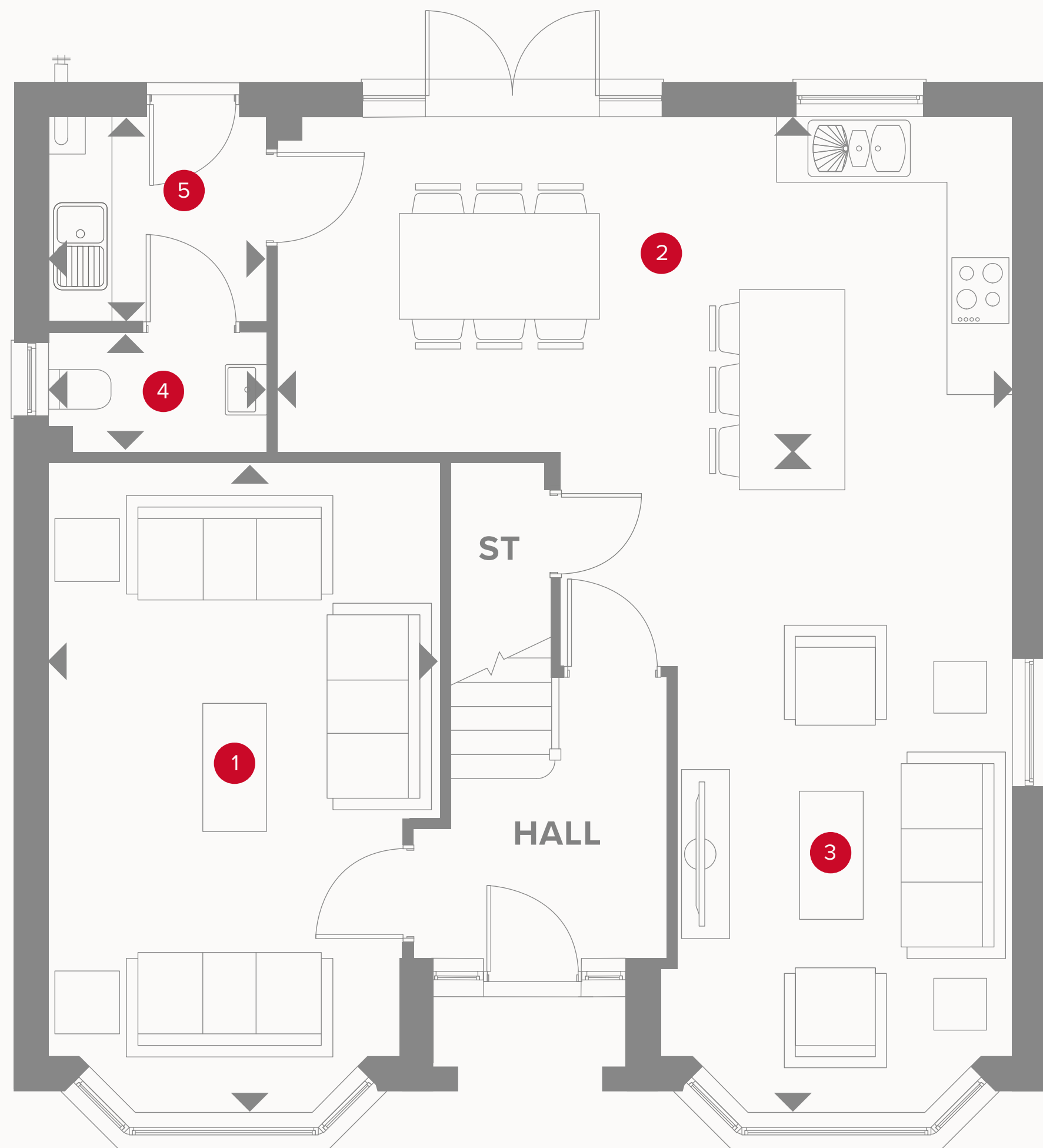
HERITAGE

- REDROW -

THE HASTING

FOUR BEDROOM HOME







THE HASTING GROUND FLOOR

1	Lounge	19'7" x 12'0"	5.97 x 3.65 m
2	Kitchen/ Dining	12'0" x 9'11"	3.67 x 3.03 m
3	Family	13'5" x 10'4"	4.09 x 3.15 m
4	Cloaks	6'8" x 3'7"	2.04 x 1.09 m
5	Utility	6'8" x 6'5"	2.04 x 1.95 m



KEY

-  Hob
-  Dimensions start
- ST** Storage cupboard



THE HASTING FIRST FLOOR

6	Bedroom 1	13'5" x 12'4"	4.08 x 3.75 m
7	En-suite	8'4" x 5'7"	2.53 x 1.71 m
8	Bedroom 2	13'7" x 10'2"	4.13 x 3.11 m
9	Bedroom 3	16'6" x 10'2"	5.04 x 3.11 m
10	Bedroom 4	10'4" x 9'6"	3.14 x 2.89 m
11	Bathroom	7'7" x 6'1"	2.31 x 1.86 m



- KEY**
- ◀ Dimensions start
 - HW** Hot water storage



Customers should note this illustration is an example of the Hasting house type. All dimensions indicated are approximate and the furniture layout is for illustrative purposes only. Homes may be 'handed' (mirror image) versions of the illustrations, and may be detached, semi-detached or terraced. Materials used may differ from plot to plot including render and roof tile colours. Detailed plans and specifications are available for inspection for each plot at our Sales Centre during working hours and customers must check their individual specifications prior to making a reservation.