

THE BUGLAWTON

GROUND FLOOR

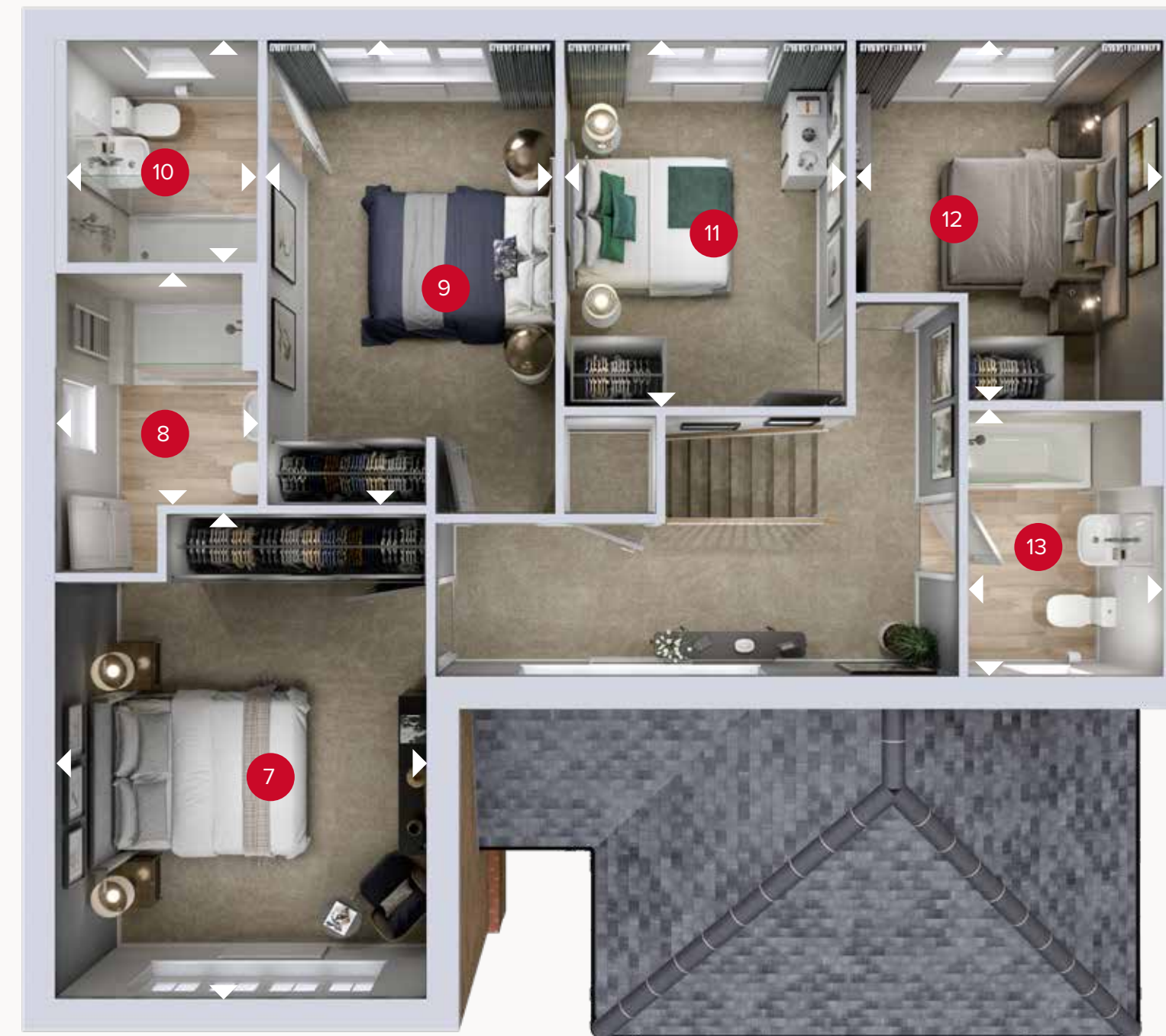
| | | |
|------------------|----------------|---------------|
| 1 Lounge | 16'10" x 11'8" | 5.12 x 3.56 m |
| 2 Kitchen/Dining | 19'8" x 14'1" | 6.00 x 4.29 m |
| 3 Snug | 9'9" x 9'7" | 2.96 x 2.92 m |
| 4 Utility | 6'4" x 5'3" | 1.93 x 1.61 m |
| 5 Cloaks | 6'0" x 3'7" | 1.82 x 1.10 m |
| 6 Garage | 18'6" x 16'4" | 5.64 x 4.97 m |

FIRST FLOOR

| | | |
|---------------|----------------|---------------|
| 7 Bedroom 1 | 15'5" x 11'8" | 4.71 x 3.56 m |
| 8 En-suite 1 | 7'9" x 6'5" | 2.35 x 1.95 m |
| 9 Bedroom 2 | 15'2" x 9'3" | 4.62 x 2.82 m |
| 10 En-suite 2 | 17'1" x 6'5" | 2.16 x 1.95 m |
| 11 Bedroom 3 | 12'0" x 8'11" | 3.67 x 2.72 m |
| 12 Bedroom 4 | 11'10" x 9'10" | 3.61 x 2.99 m |
| 13 Bathroom | 8'5" x 6'3" | 2.57 x 1.91 m |



GROUND FLOOR



FIRST FLOOR

▷ Denotes where dimensions are taken from. All wardrobes are subject to site specification. Please see Sales Consultant for further details.

ov - oven
ff - fridge freezer
dw - dishwasher
wm - washing machine space
td - tumble dryer space