



The Marlow

Four Bedroom Home

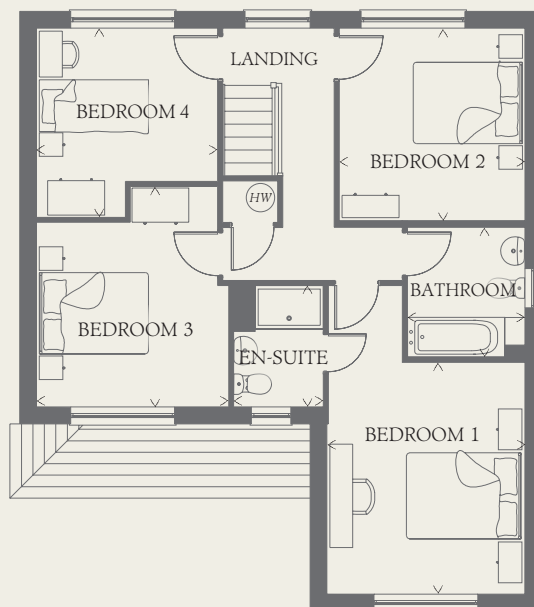
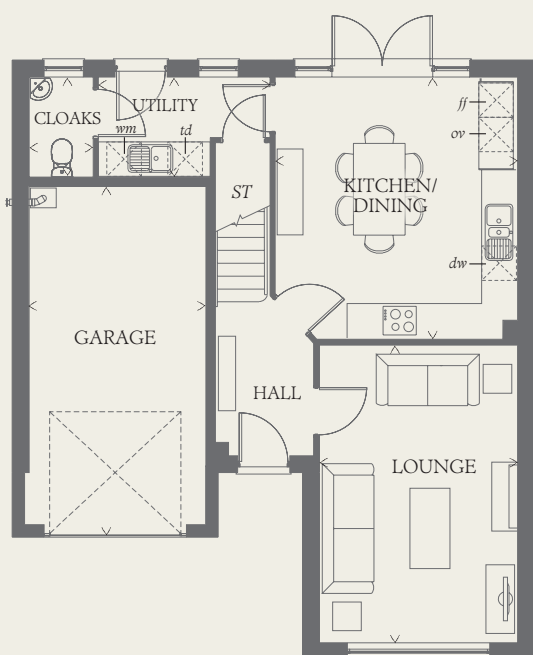




The Marlow

Four Bedroom Home

This detached home has been designed to ensure the spacious and well-proportioned rooms complement today's busy lifestyle, from the well thought out kitchen/dining area to the large lounge and the four double bedrooms on the first floor, this is a property you will be proud to call home.



GROUND FLOOR

LOUNGE	16'10" x 11'2"	5.14 x 3.41 m
KITCHEN/ DINING	14'10" x 13'9"	4.53 x 4.20 m
UTILITY	9'10" x 5'8"	3.00 x 1.72 m
CLOAKS	5'8" x 3'7"	1.72 x 1.10 m
GARAGE	19'11" x 10'1"	6.07 x 3.08 m

FIRST FLOOR

BEDROOM 1	13'2" x 11'2"	4.02 x 3.41 m
EN-SUITE	6'10" x 5'1"	2.09 x 1.56 m
BEDROOM 2	10'11" x 10'6"	3.33 x 3.21 m
BEDROOM 3	12'6" x 10'11"	3.82 x 3.33 m
BEDROOM 4	10'9" x 10'3"	3.27 x 3.13 m
BATHROOM	7'5" x 6'8"	2.26 x 2.03 m

CONSUMER CODE FOR HOME BUILDERS

www.consumercode.co.uk

Customers should note this illustration is an example of the Marlow house type. All dimensions indicated are approximate and the furniture layout is for illustrative purposes only. Homes may be 'handed' (mirror image) versions of the illustrations, and may be detached, semi-detached or terraced. Materials used may differ from plot to plot including render and roof tile colours. Detailed plans and specifications are available for inspection for each plot at our Sales Centre during working hours and customers must check their individual specifications prior to making a reservation.

KEY

Hob	Tumble dryer space
Oven	Hot water cylinder
Fridge/freezer	Cupboard
Washing machine space	
Dishwasher space	

< Denotes where dimensions are taken from. All wardrobes are subject to site specification. Please see Sales Consultant for further details.

THINK 202961. EF_MARO_DM.1.0 RV

