



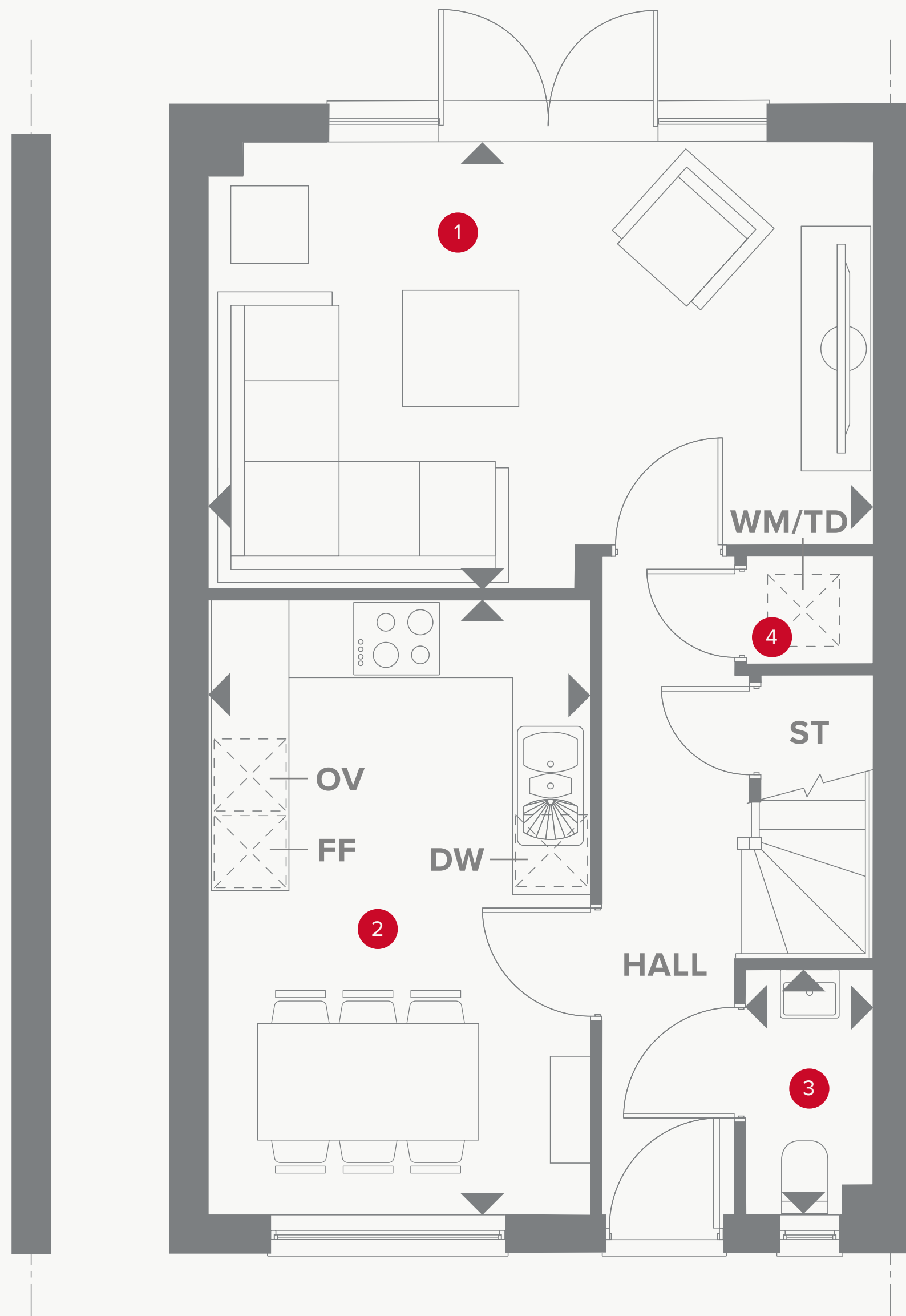
HERITAGE

- REDROW -

THE GRANTHAM 4

FOUR BEDROOM HOME

 **REDROW**



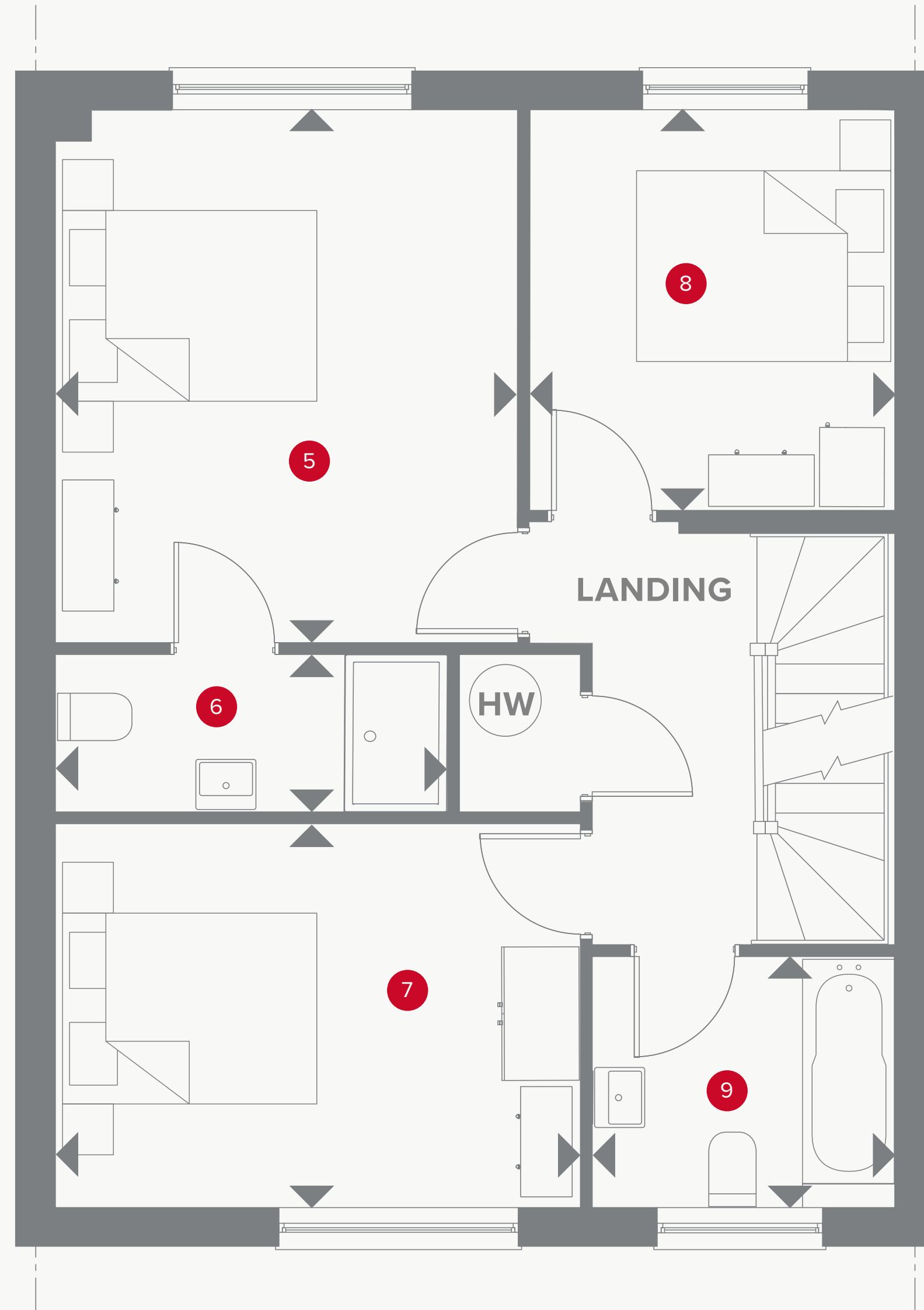
THE GRANTHAM 4 GROUND FLOOR

1 Lounge	16'8" x 11'3"	5.09 x 3.43 m
2 Kitchen/ Dining	15'6" x 9'7"	4.73 x 2.93 m
3 Cloaks	6'2" x 3'2"	1.87 x 0.96 m
4 Laundry	3'2" x 2'9"	0.96 x 0.84 m



KEY

-  Hob
- OV** Oven
- FF** Fridge/freezer
- DW** Dishwasher space
-  Dimensions start
- ST** Storage cupboard
- WM** Washing machine space
- TD** Tumble dryer space



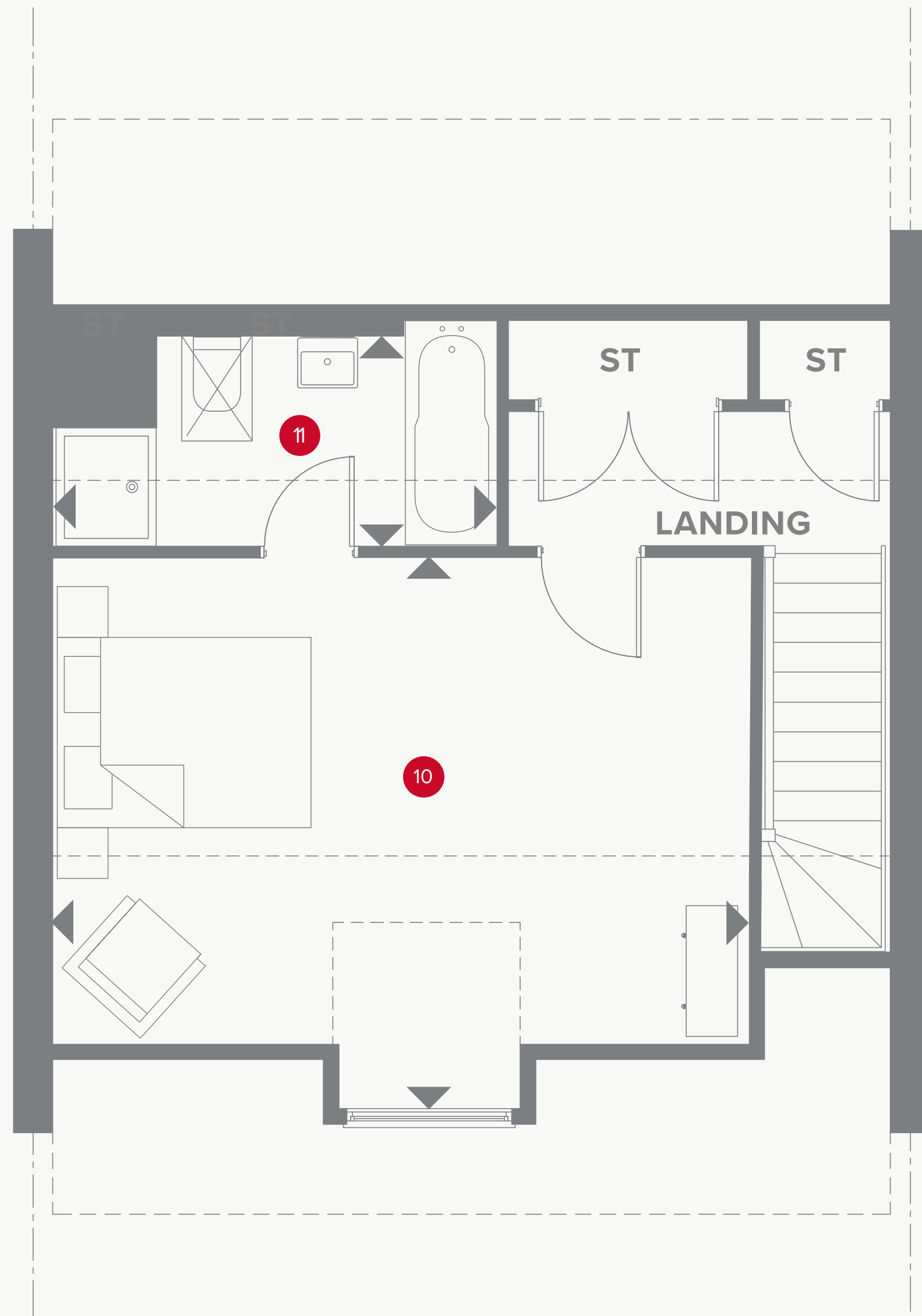
THE GRANTHAM 4 FIRST FLOOR

5	Bedroom 1	13'1" x 11'5"	4.00 x 3.47 m
6	En-Suite	9'8" x 3'11"	2.94 x 1.19 m
7	Bedroom 2	12'11" x 9'5"	3.94 x 2.87 m
8	Bedroom 3	9'10" x 8'11"	3.00 x 2.73 m
9	Bathroom	7'5" x 6'2"	2.26 x 1.87 m



KEY

- ◀ Dimensions start
- HW Hot water storage



THE GRANTHAM 4 SECOND FLOOR

10	Bedroom/Media Room	17'2" x 13'8"	5.24 x 4.17 m
11	En-suite	11'9" x 5'0"	3.58 x 1.53 m



KEY

- ◀ Dimensions start
- ST Storage cupboard



Customers should note this illustration is an example of the Leamington Lifestyle house type. All dimensions indicated are approximate and the furniture layout is for illustrative purposes only. Homes may be 'handed' (mirror image) versions of the illustrations, and may be detached, semi-detached or terraced. Materials used may differ from plot to plot including render and roof tile colours. Detailed plans and specifications are available for inspection for each plot at our Sales Centre during working hours and customers must check their individual specifications prior to making a reservation. All wardrobes are subject to site specification. Please see Sales Consultant for further details.