



HERITAGE

- REDROW -

THE LEDSHAM

FOUR BEDROOM HOME

 **REDROW**



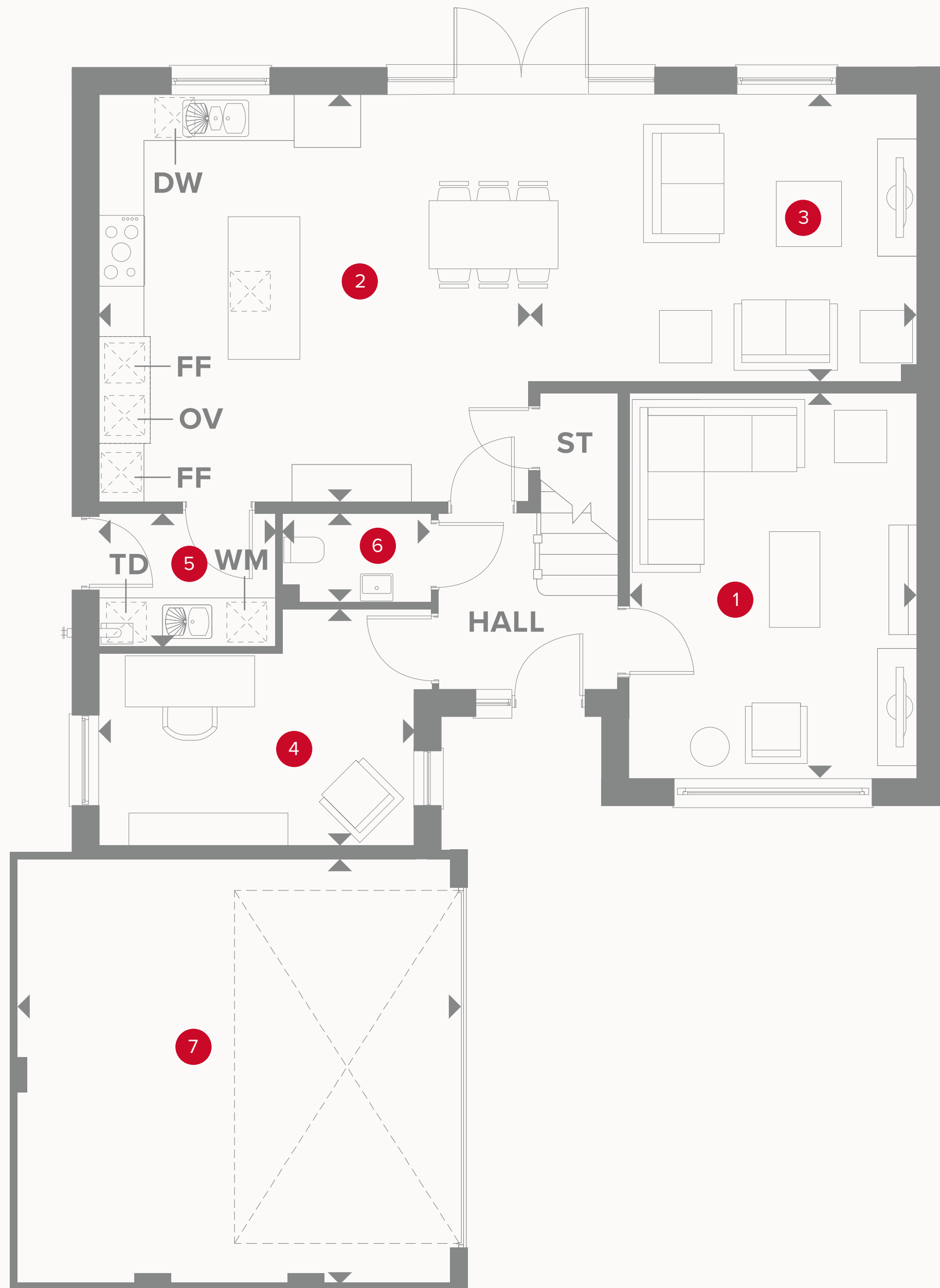
HERITAGE

- REDROW -

THE LEDSHAM

FOUR BEDROOM HOME





THE LEDSHAM GROUND FLOOR

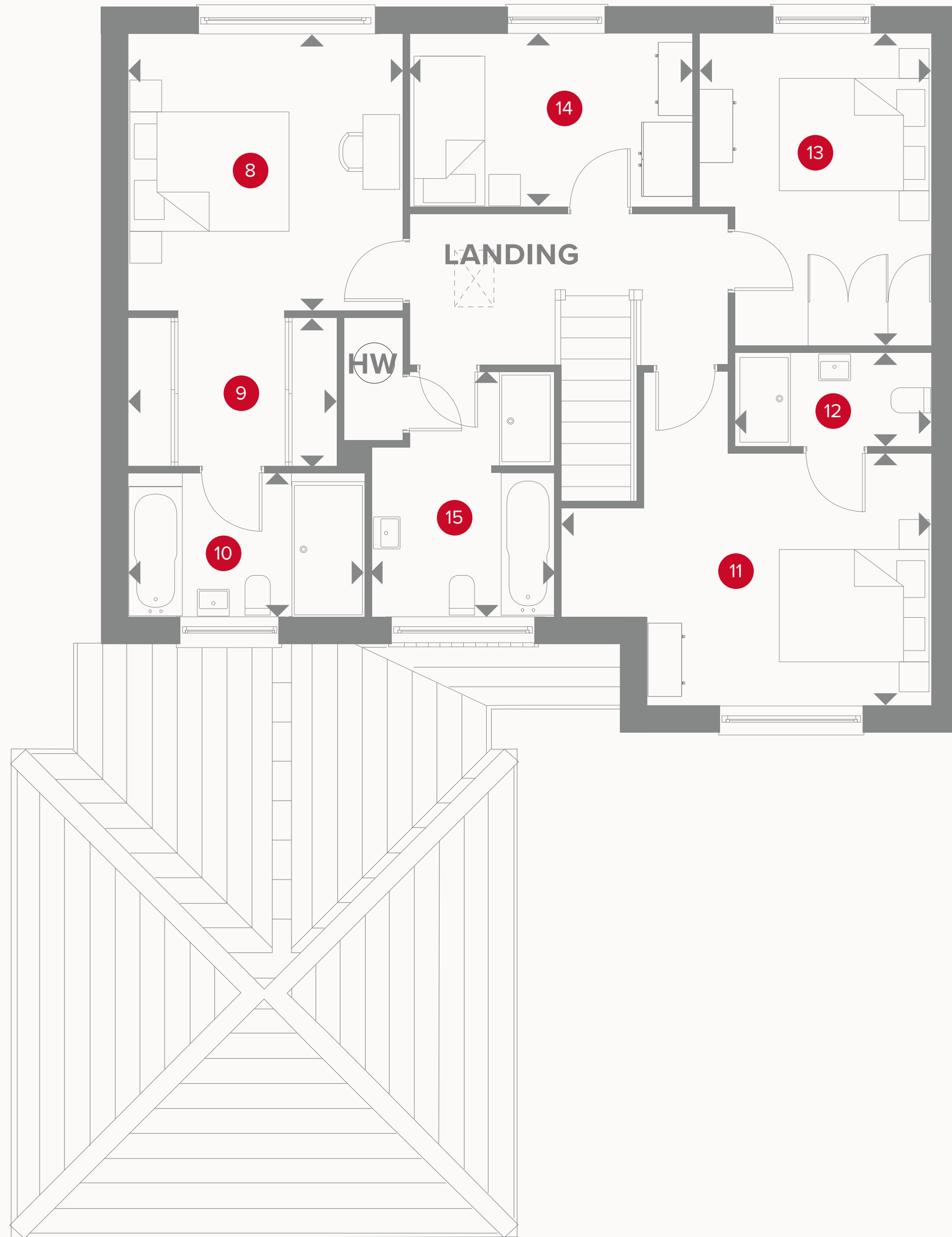
1	Lounge	15'11" x 11'11"	4.84 x 3.63 m
2	Kitchen/Dining	17'8" x 16'9"	5.39 x 5.10 m
3	Family	16'0" x 11'10"	4.88 x 3.60 m
4	Study	13'0" x 9'9"	3.97 x 2.97 m
5	Utility	7'4" x 5'6"	2.23 x 1.67 m
6	Cloaks	6'1" x 3'7"	1.85 x 1.10 m
7	Garage	18'4" x 17'5"	5.58 x 5.30 m



KEY

Hob
OV Oven
FF Fridge/freezer
TD Tumble dryer space

Dimensions start
ST Storage cupboard
WM Washing machine space
DW Dish washer space



THE LEDSHAM FIRST FLOOR

8	Bedroom 1	11'8" x 11'7"	3.55 x 3.52 m
9	Dressing	8'10" x 6'2"	2.68 x 1.88 m
10	En-suite 1	9'11" x 6'1"	3.03 x 1.86 m
11	Bedroom 2	11'11" x 10'7"	4.73 x 3.22 m
12	En-suite 2	8'4" x 3'11"	2.53 x 1.19 m
13	Bedroom 3	13'0" x 9'9"	3.96 x 2.97 m
14	Bedroom 4	11'8" x 7'4"	3.55 x 2.23 m
15	Bathroom	10'3" x 7'8"	3.13 x 2.33 m



KEY

- ◀ Dimensions start
- HW** Hot water storage
- LH** Loft hatch

**CONSUMER
CODE FOR
HOME BUILDERS**
www.consumercode.co.uk

Customers should note this illustration is an example of the Ledsham house type. All dimensions indicated are approximate and the furniture layout is for illustrative purposes only. Homes may be 'handed' (mirror image) versions of the illustrations, and may be detached, semi-detached or terraced. Materials used may differ from plot to plot including render and roof tile colours. Detailed plans and specifications are available for inspection for each plot at our Sales Centre during working hours and customers must check their individual specifications prior to making a reservation.