



The Amberley End

Three Bedroom Home





The Amberley End

Three Bedroom Home





The Amberley End

Three Bedroom Home

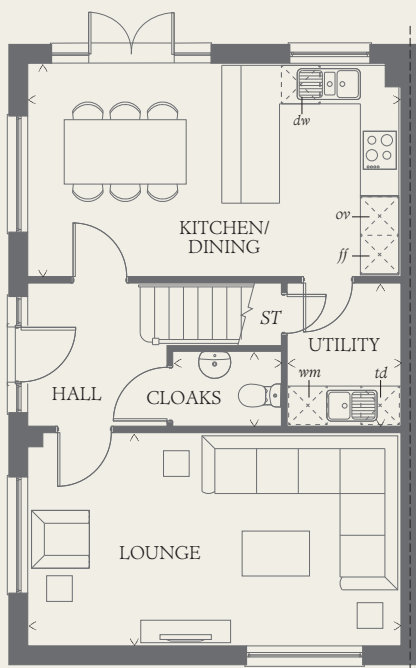




The Amberley End

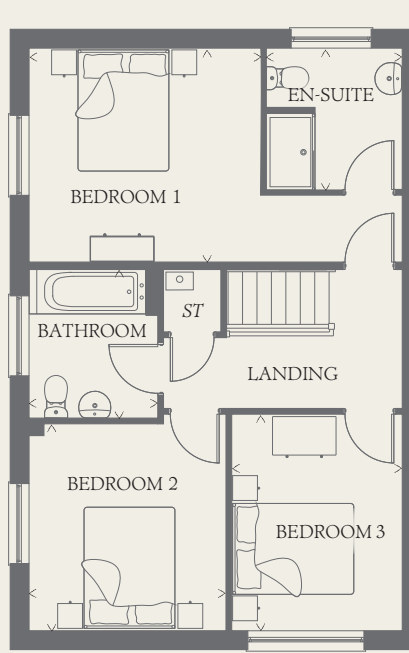
Three Bedroom Home

A beautiful home, the Amberley creates the perfect balance between a peaceful environment and a practical living space. An extensive kitchen/dining area, separate lounge and three double bedrooms, make this home the perfect place to relax after a long day.



GROUND FLOOR

LOUNGE	18'11" x 10'9"	5.77 x 3.27 m
KITCHEN/ DINING	18'11" x 10'9"	5.77 x 3.28 m
CLOAKS	5'7" x 3'9"	1.70 x 1.14 m
UTILITY	7'2" x 5'9"	2.18 x 1.75 m



FIRST FLOOR

BEDROOM 1	11'9" x 10'10"	3.58 x 3.31 m
EN-SUITE	7'2" x 6'11"	2.18 x 2.10 m
BEDROOM 2	10'6" x 10'0"	3.20 x 3.05 m
BEDROOM 3	11'0" x 8'8"	3.35 x 2.63 m
BATHROOM	7'7" x 6'6"	2.32 x 1.98 m

CONSUMER CODE FOR HOME BUILDERS

www.consumercode.co.uk

Customers should note this illustration is an example of the Amberley End house type. All dimensions indicated are approximate and the furniture layout is for illustrative purposes only. Homes may be 'handed' (mirror image) versions of the illustrations, and may be detached, semi-detached or terraced. Materials used may differ from plot to plot including render and roof tile colours. Detailed plans and specifications are available for inspection for each plot at our Sales Centre during working hours and customers must check their individual specifications prior to making a reservation.

KEY

Hob	<i>td</i> Tumble dryer space
<i>ov</i> Oven	<i>ST</i> Cupboard
<i>ff</i> Fridge/freezer	
<i>wm</i> Washing machine space	
<i>dw</i> Dishwasher space	

> Max dimensions Note: Bedroom dimensions taken into wardrobe recess. All wardrobes are subject to site specification. Please see Sales Consultant for further details.

THINK 191168. EF_AMBY_EM.2.0 RV