

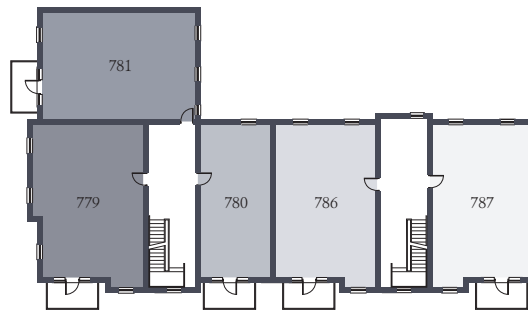


Welcome to Darenth House at Regent Village, an exclusive new collection of 15 one and two-bedroom apartments. These contemporary homes have been designed and finished to an exceptional standard, with a high specification to suit the needs of modern living.

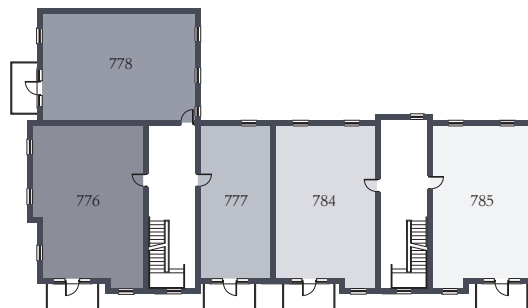
These apartments are ideally positioned for commuters, with Ebbsfleet International Station and the M2 motorway both in close proximity. Regent Village further benefits from a range of amenities, pubs and restaurants close by, with the ultimate shopping experience of Bluewater just a short drive away.

*Welcome to Regent Village*

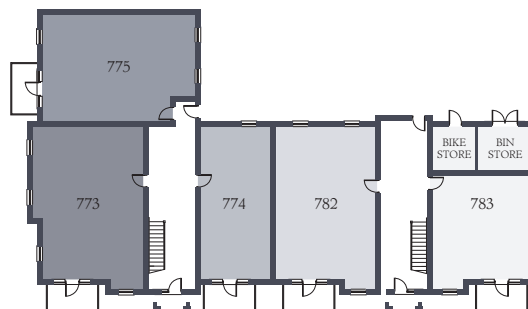
---



*Second Floor*



*First Floor*



*Ground Floor*

## REGENT VILLAGE

Southfleet Road, Ebbsfleet, Kent DA10 0BE

Telephone: 01322 772846



EMS 667178

**CONSUMER  
CODE FOR  
HOME BUILDERS**

[www.consumercode.co.uk](http://www.consumercode.co.uk)

CGI's of apartment blocks and the overall development are indicative only. Customers should note this illustration is an example of the apartment type. Please refer to your sales consultant for details of any elevational differences. All dimensions indicated are approximate. The specifications will vary from site to site and plot to plot. Detailed plans and specifications are available for inspection for each plot at our Sales Centre during working hours and customers must check their individual specifications prior to making a reservation.

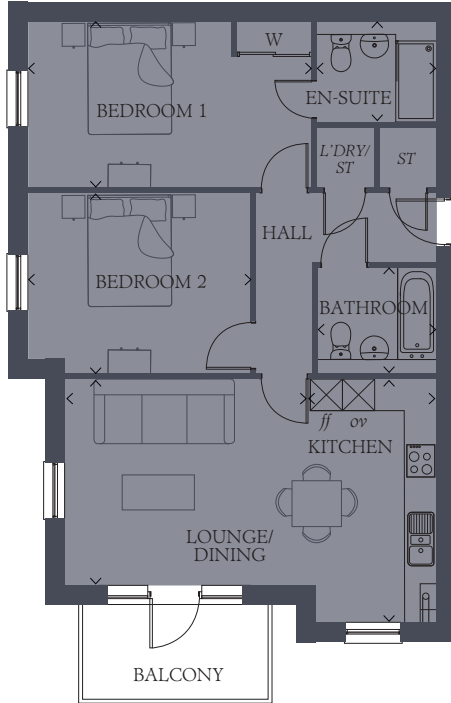
# DARENTH HOUSE

REGENT VILLAGE



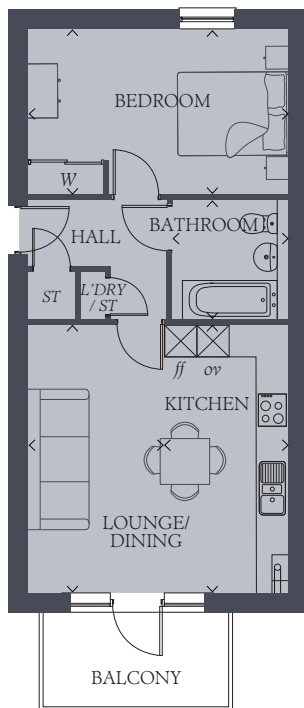
REGENT VILLAGE  
DARENTH HOUSE

 **REDROW**  
A BETTER WAY TO LIVE



## Type 1 Plots 773, 776 & 779

LOUNGE/ DINING	15'1" x 12'5"	4.61 x 3.83 m
KITCHEN	14'7" x 7'3"	4.5 x 2.24 m
BEDROOM 1	17'2" x 10'1"	5.25 x 3.08 m
EN-SUITE	7'2" x 5'2"	2.2 x 1.61 m
BEDROOM 2	13'5" x 10'8"	4.13 x 3.32 m
BATHROOM	7'2" x 5'5"	2.2 x 1.7 m
BALCONY	9'8" x 6'5"	3.0 x 2.0 m



## Type 2 Plots 774, 777 & 780

LOUNGE/ DINING	16'2" x 9'6"	4.95 x 2.95 m
KITCHEN	16'2" x 6'0"	4.95 x 1.83 m
BEDROOM	15'6" x 10'0"	4.78 x 3.06 m
BATHROOM	7'2" x 6'2"	2.2 x 1.9 m
BALCONY	9'8" x 6'5"	3.0 x 2.0 m

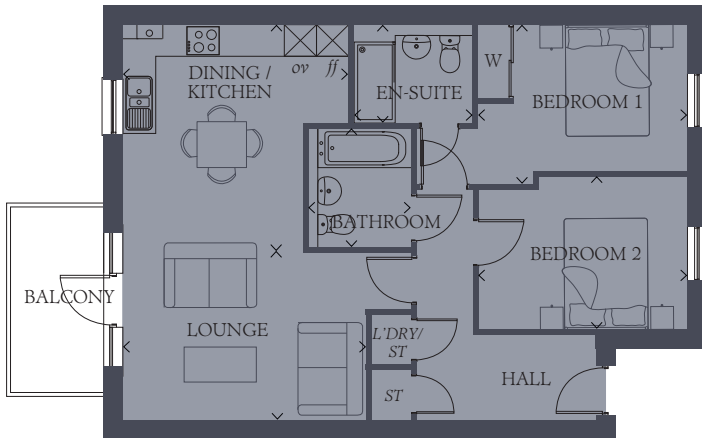
Customers should note this illustration is an example of the Darenth House. All dimensions indicated are approximate and the furniture layout is for illustrative purposes only. Homes may be 'handed' (mirror image) versions of the illustrations. Materials used may differ from plot to plot. Detailed plans and specifications are available for inspection for each plot at our Sales Centre during working hours and customers must check their individual specifications prior to making a reservation.

### KEY

ST Cupboard  
ov Oven

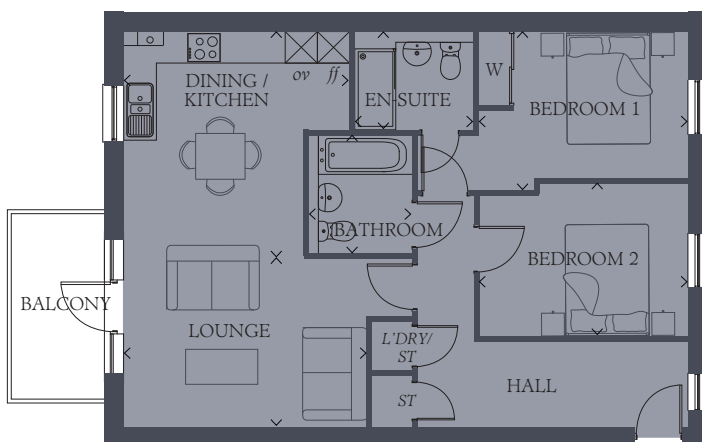
W Wardrobe  
Boiler

ff fridge freezer



## Type 3 Plot 775

LOUNGE	14'8" x 10'2"	4.47 x 3.09 m
DINING/ KITCHEN	13'8" x 13'6"	4.22 x 4.15 m
BEDROOM 1	12'6" x 9'0"	3.86 x 2.75 m
EN-SUITE	7'2" x 5'2"	2.2 x 1.61 m
BEDROOM 2	12'6" x 9'1"	3.86 x 2.79 m
BATHROOM	7'2" x 5'5"	2.2 x 1.7 m
BALCONY	9'8" x 6'5"	3.0 x 2.0 m



## Type 4 Plots 778 & 781

LOUNGE	14'6" x 10'1"	4.47 x 3.09 m
DINING/ KITCHEN	13'8" x 13'6"	4.22 x 4.15 m
BEDROOM 1	12'6" x 9'0"	3.86 x 2.75 m
EN-SUITE	7'2" x 5'2"	2.2 x 1.61 m
BEDROOM 2	12'6" x 9'1"	3.86 x 2.79 m
BATHROOM	7'2" x 5'5"	2.2 x 1.7 m
BALCONY	9'8" x 6'5"	3.0 x 2.0 m

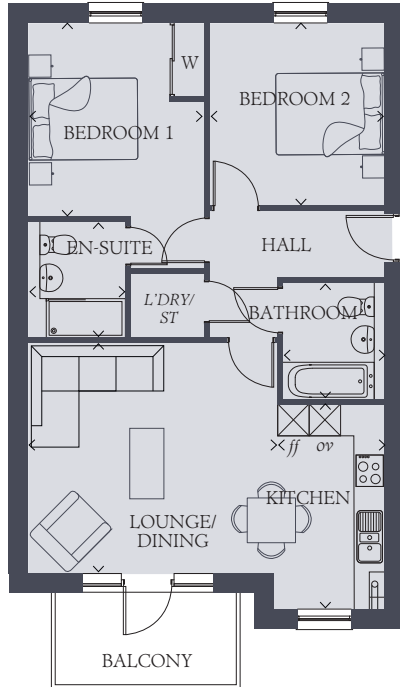
Customers should note this illustration is an example of the Darenth House. All dimensions indicated are approximate and the furniture layout is for illustrative purposes only. Homes may be 'handed' (mirror image) versions of the illustrations. Materials used may differ from plot to plot. Detailed plans and specifications are available for inspection for each plot at our Sales Centre during working hours and customers must check their individual specifications prior to making a reservation.

### KEY

ST Cupboard  
ov Oven

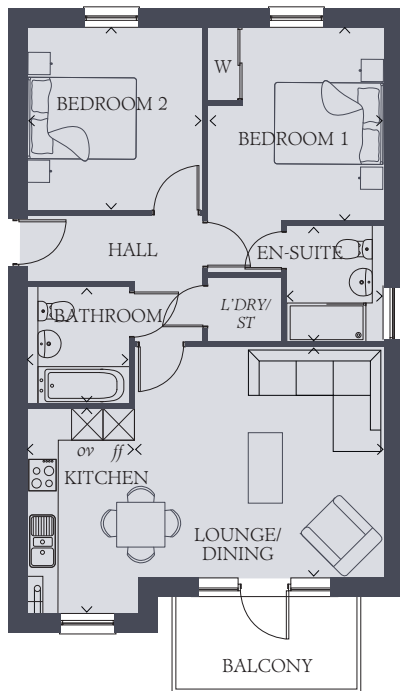
W Wardrobe  
Boiler

ff fridge freezer



### Type 5 Plots 782, 784 & 786

KITCHEN	12'7" x 7'0"	3.88 x 2.13 m
LOUNGE/ DINING	13'6" x 14'2"	4.16 x 4.35 m
BEDROOM 1	12'0" x 10'9"	3.66 x 3.33 m
EN-SUITE	7'2" x 5'2"	2.2 x 1.61 m
BEDROOM 2	11'3" x 10'9"	3.46 x 3.33 m
BATHROOM	7'2" x 5'5"	2.2 x 1.7 m
BALCONY	9'8" x 6'5"	3.0 x 2.0 m



### Type 5 handed Plot 785 & 787

KITCHEN	12'7" x 7'0"	3.88 x 2.13 m
LOUNGE/ DINING	13'6" x 14'2"	4.16 x 4.35 m
BEDROOM 1	12'0" x 10'9"	3.66 x 3.33 m
EN-SUITE	7'2" x 5'2"	2.2 x 1.61 m
BEDROOM 2	11'3" x 10'9"	3.46 x 3.33 m
BATHROOM	7'2" x 5'5"	2.2 x 1.7 m
BALCONY	9'8" x 6'5"	3.0 x 2.0 m

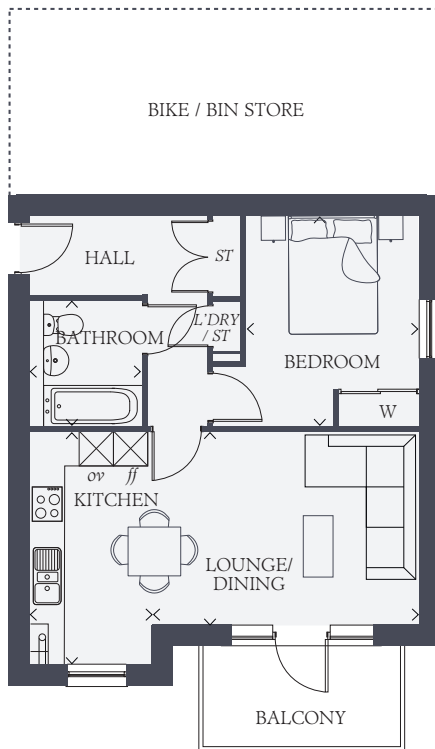
Customers should note this illustration is an example of the Darenth House. All dimensions indicated are approximate and the furniture layout is for illustrative purposes only. Homes may be 'handed' (mirror image) versions of the illustrations. Materials used may differ from plot to plot. Detailed plans and specifications are available for inspection for each plot at our Sales Centre during working hours and customers must check their individual specifications prior to making a reservation.

#### KEY

ST Cupboard  
ov Oven

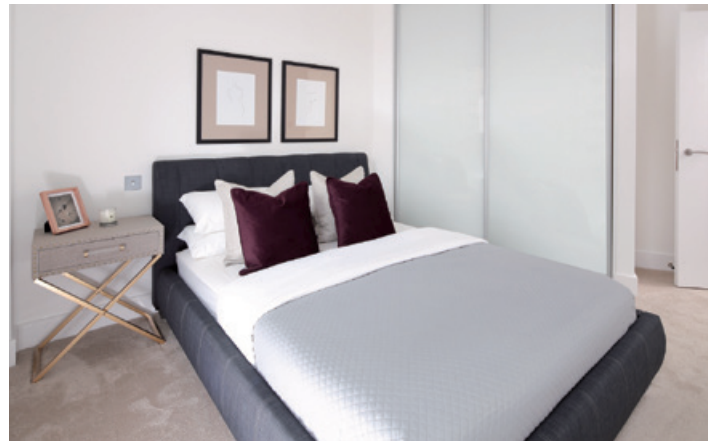
W Wardrobe  
Boiler

ff fridge freezer



## Type 6 Plot 783

LOUNGE/ DINING	15'1" x 11'1"	4.61 x 3.37 m
KITCHEN	13'3" x 6'12"	4.04 x 2.13 m
BEDROOM	11'1" x 9'10"	3.64 x 3.0 m
BATHROOM	7'2" x 5'5"	2.2 x 1.7 m
BALCONY	9'8" x 6'5"	3.0 x 2.0 m



Customers should note this illustration is an example of the Darenth House. All dimensions indicated are approximate and the furniture layout is for illustrative purposes only. Homes may be 'handed' (mirror image) versions of the illustrations. Materials used may differ from plot to plot. Detailed plans and specifications are available for inspection for each plot at our Sales Centre during working hours and customers must check their individual specifications prior to making a reservation.

KEY					
ST	Cupboard	W	Wardrobe	ff	fridge freezer
ov	Oven		Boiler		