



**TAILORED**

- REDROW -

# LORDS HOUSE REGENT VILLAGE

ONE & TWO BEDROOM APARTMENTS

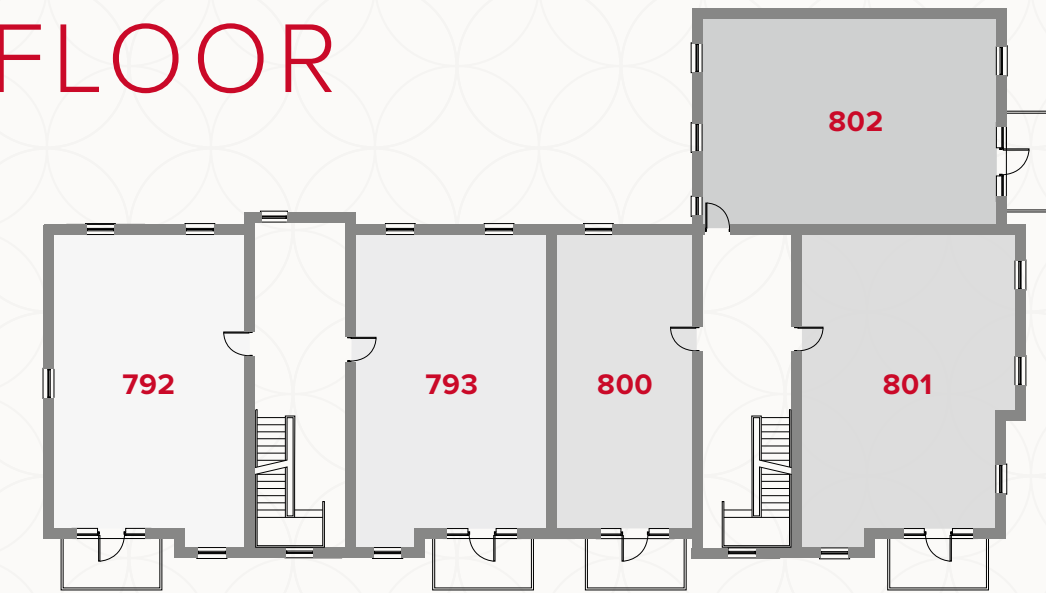


# WELCOME TO REGENT VILLAGE

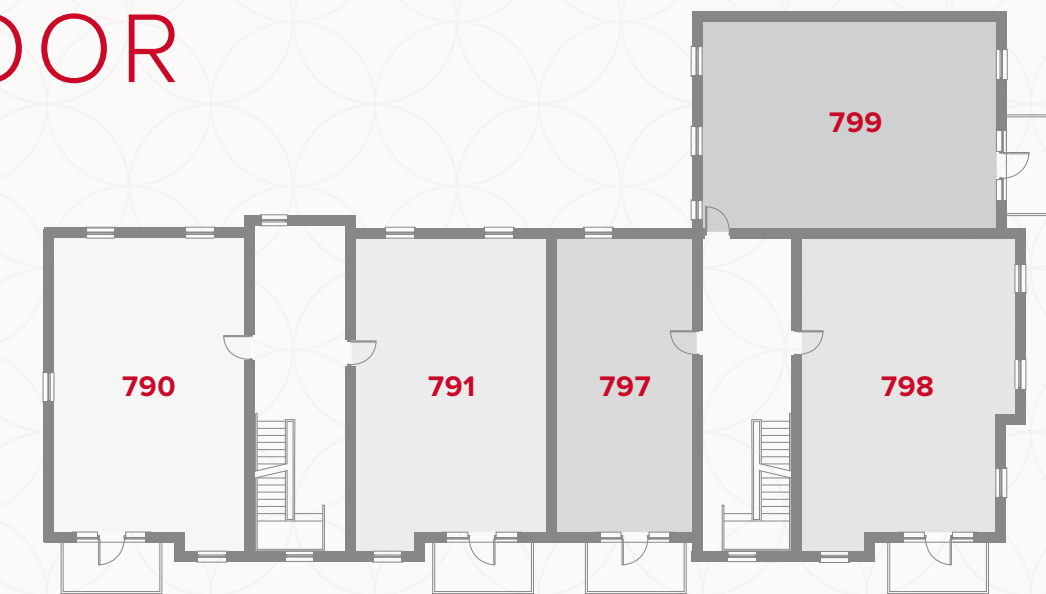
Welcome to Lords House at Regent Village, an exclusive new collection of just 15 one and two-bedroom apartments. These contemporary homes have been designed and finished to an exceptional standard, with a high specification to suit the needs of modern living. These apartments are ideally positioned for commuters, with Ebbsfleet International Station and the M2 motorway both in close proximity. Regent Village further benefits from a range of amenities, pubs and restaurants close by, with the ultimate shopping experience of Bluewater just a short drive away.



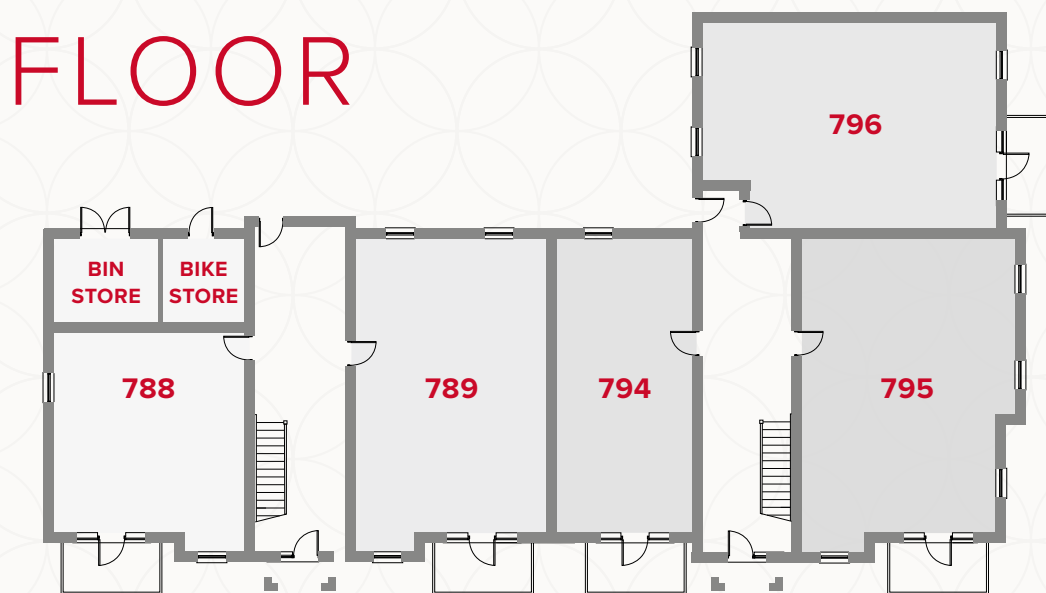
## SECOND FLOOR

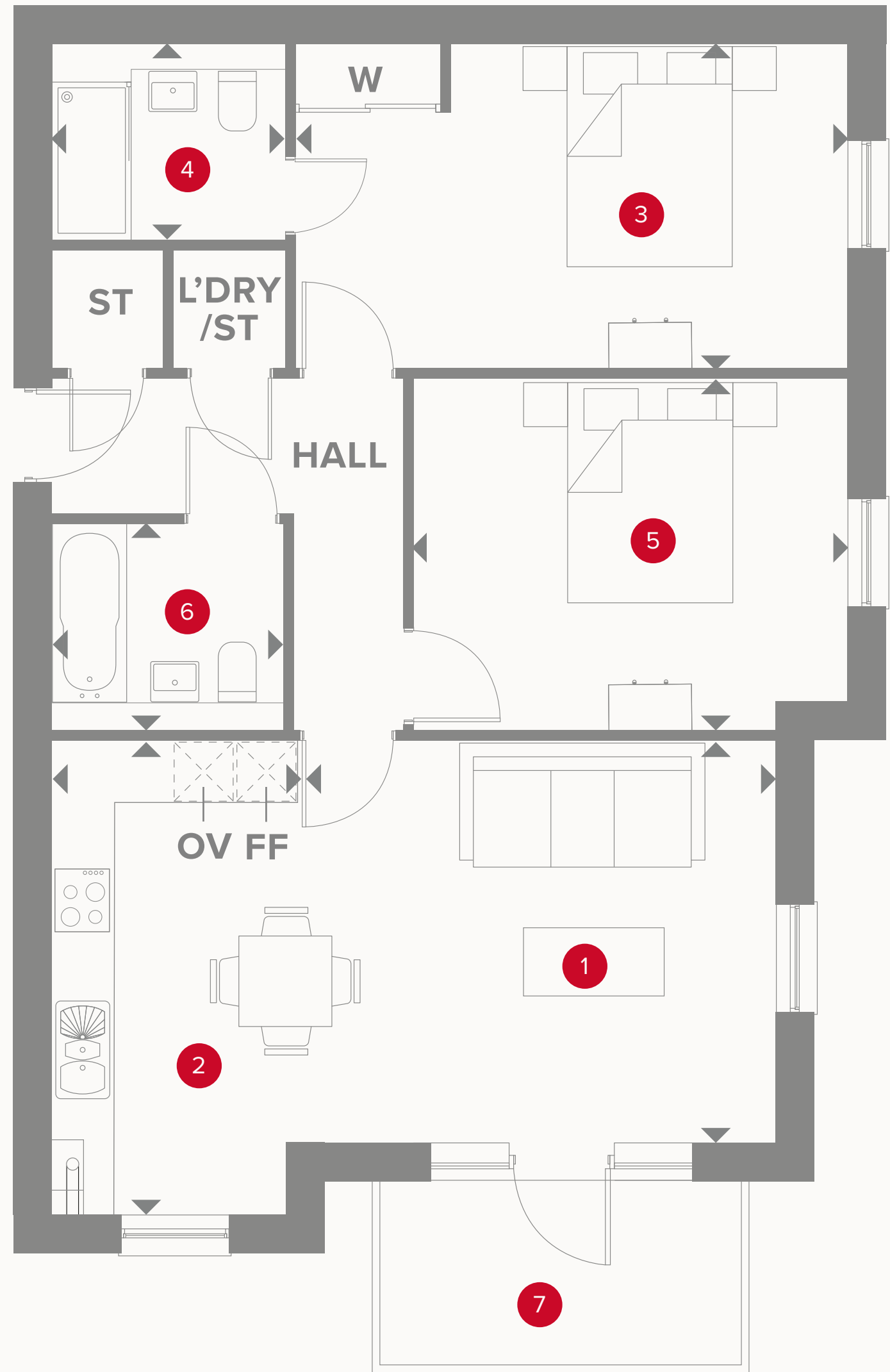


## FIRST FLOOR



## GROUND FLOOR

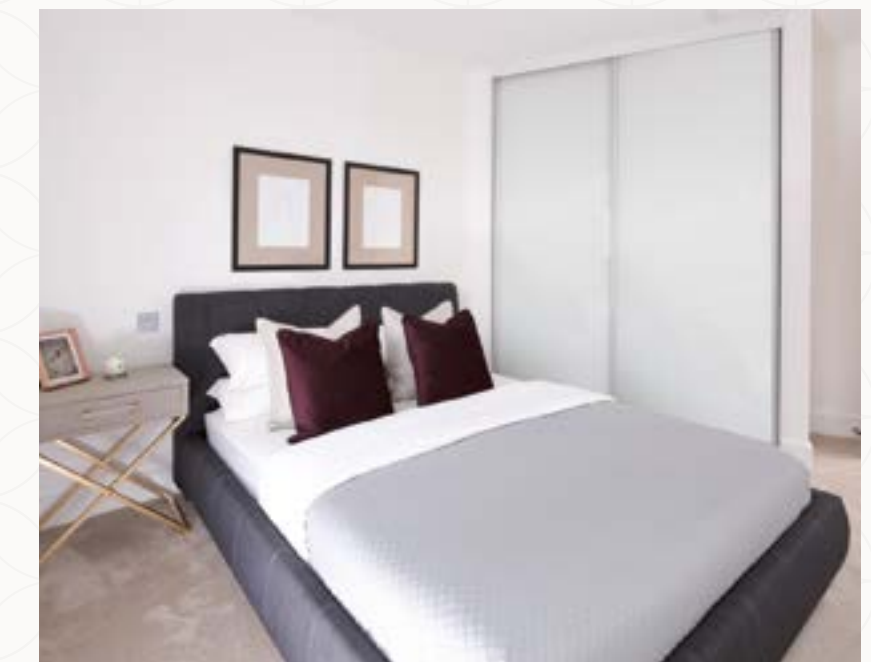







# LORDS HOUSE APARTMENT TYPE 1




## PLOTS 795, 798 & 801

1	Lounge/Dining	15'1" x 12'5"	4.61 x 3.83 m
2	Kitchen	14'7" x 7'3"	4.50 x 2.24 m
3	Bedroom 1	17'2" x 10'1"	5.25 x 3.08 m
4	En-Suite	7'2" x 5'2"	2.20 x 1.61 m
5	Bedroom 2	13'5" x 10'8"	4.13 x 3.32 m
6	Bathroom	7'2" x 5'5"	2.20 x 1.70 m
7	Balcony	9'8" x 6'5"	3.00 x 2.00 m



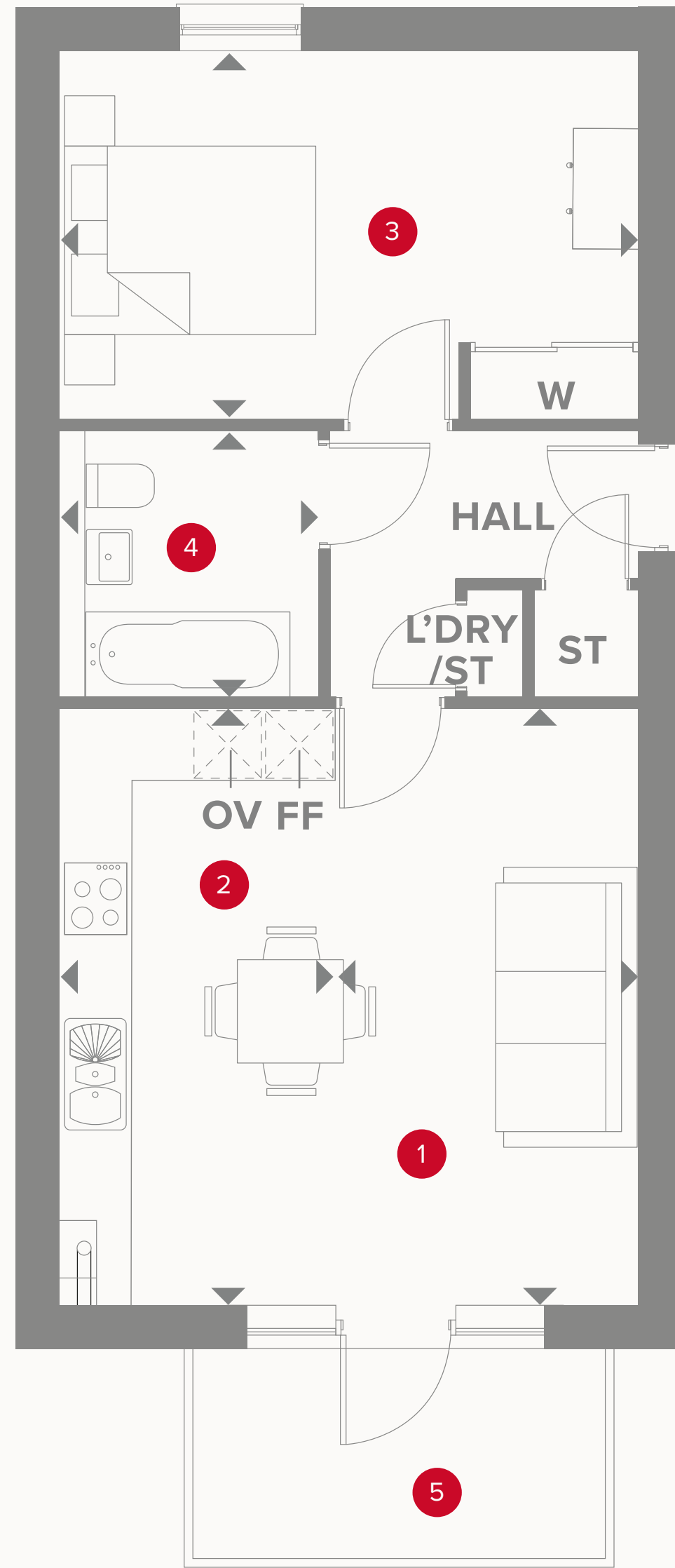
### KEY

 Hob  
 Oven  
 Fridge/freezer

 Dimensions start  
 Storage cupboard  
 Wardrobe

Customers should note this illustration is an example of the Lords House apartments. All dimensions indicated are approximate and the furniture layout is for illustrative purposes only. Materials used may differ from plot to plot including render and roof tile colours. Detailed plans and specifications are available for inspection for each plot at our CES during working hours and customers must check their individual specifications prior to making a reservation. Please see Sales Consultant for further details.

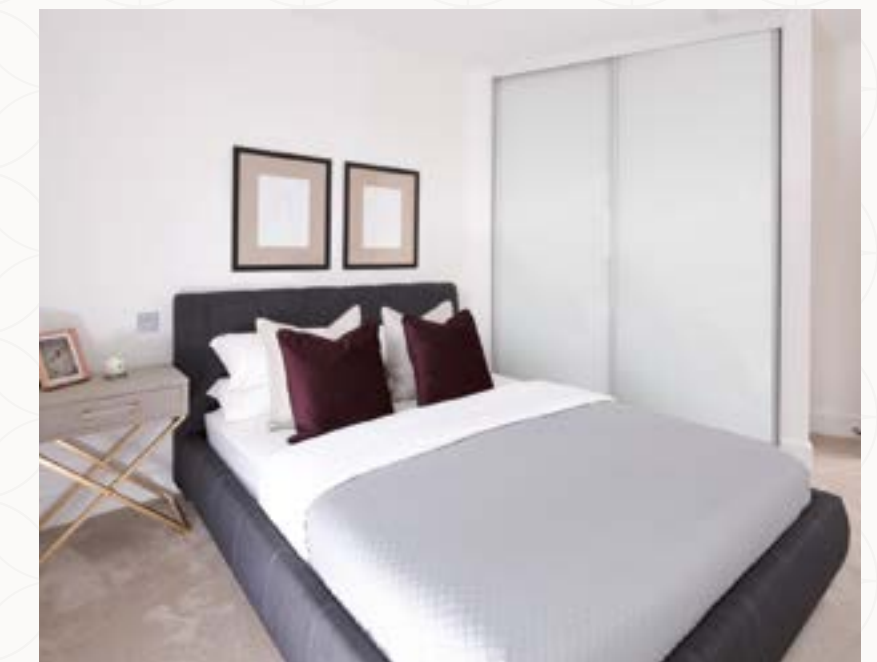
**CONSUMER  
CODE FOR  
HOME BUILDERS**  
[www.consumercode.co.uk](http://www.consumercode.co.uk)



# LORDS HOUSE APARTMENT TYPE 2

PLOTS 794, 797 & 800

1	Lounge/Dining	16'2" x 9'6"	4.95 x 2.95 m
2	Kitchen	16'2" x 6'0"	4.95 x 1.83 m
3	Bedroom	15'6" x 10'0"	4.78 x 3.06 m
4	Bathroom	7'2" x 6'2"	2.20 x 1.90 m
5	Balcony	9'8" x 6'5"	3.00 x 2.00 m



## KEY

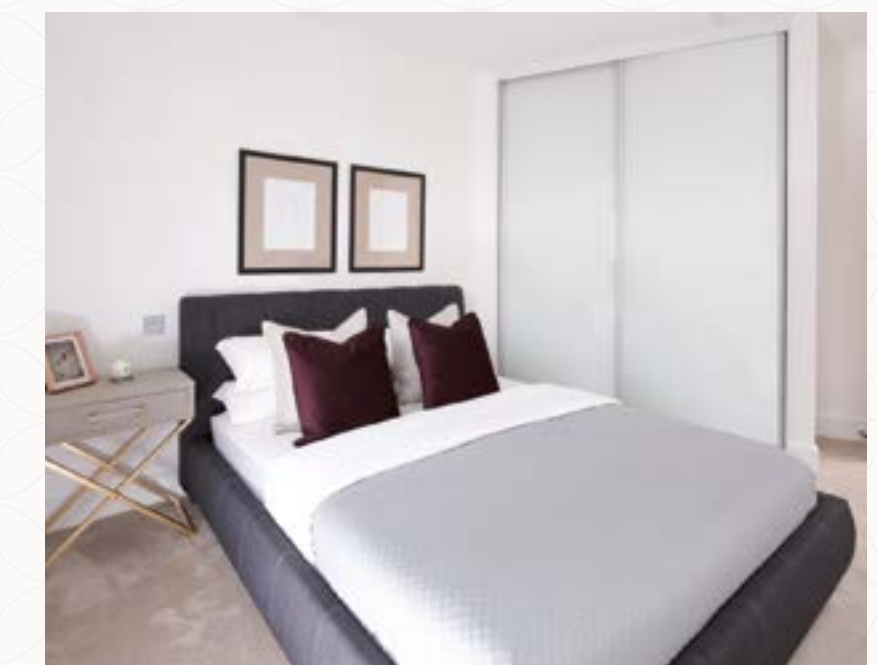
-  Hob
-  OV Oven
-  FF Fridge/freezer
-  Dimensions start
-  ST Storage cupboard
-  W Wardrobe

Customers should note this illustration is an example of the Lords House apartments. All dimensions indicated are approximate and the furniture layout is for illustrative purposes only. Materials used may differ from plot to plot including render and roof tile colours. Detailed plans and specifications are available for inspection for each plot at our CES during working hours and customers must check their individual specifications prior to making a reservation. Please see Sales Consultant for further details.




**CONSUMER  
CODE FOR  
HOME BUILDERS**  
[www.consumercode.co.uk](http://www.consumercode.co.uk)




# LORDS HOUSE APARTMENT TYPE 3 PLOT 796

1	Lounge	14'8" x 10'2"	4.47 x 3.09 m
2	Kitchen/Dining	13'8" x 13'6"	4.22 x 4.15 m
3	Bedroom 1	12'6" x 9'0"	3.86 x 2.75 m
4	En-Suite	7'2" x 5'2"	2.20 x 1.61 m
5	Bedroom 2	12'6" x 9'1"	3.86 x 2.79 m
6	Bathroom	7'2" x 5'5"	2.20 x 1.70 m
7	Balcony	9'8" x 6'5"	3.00 x 2.00 m

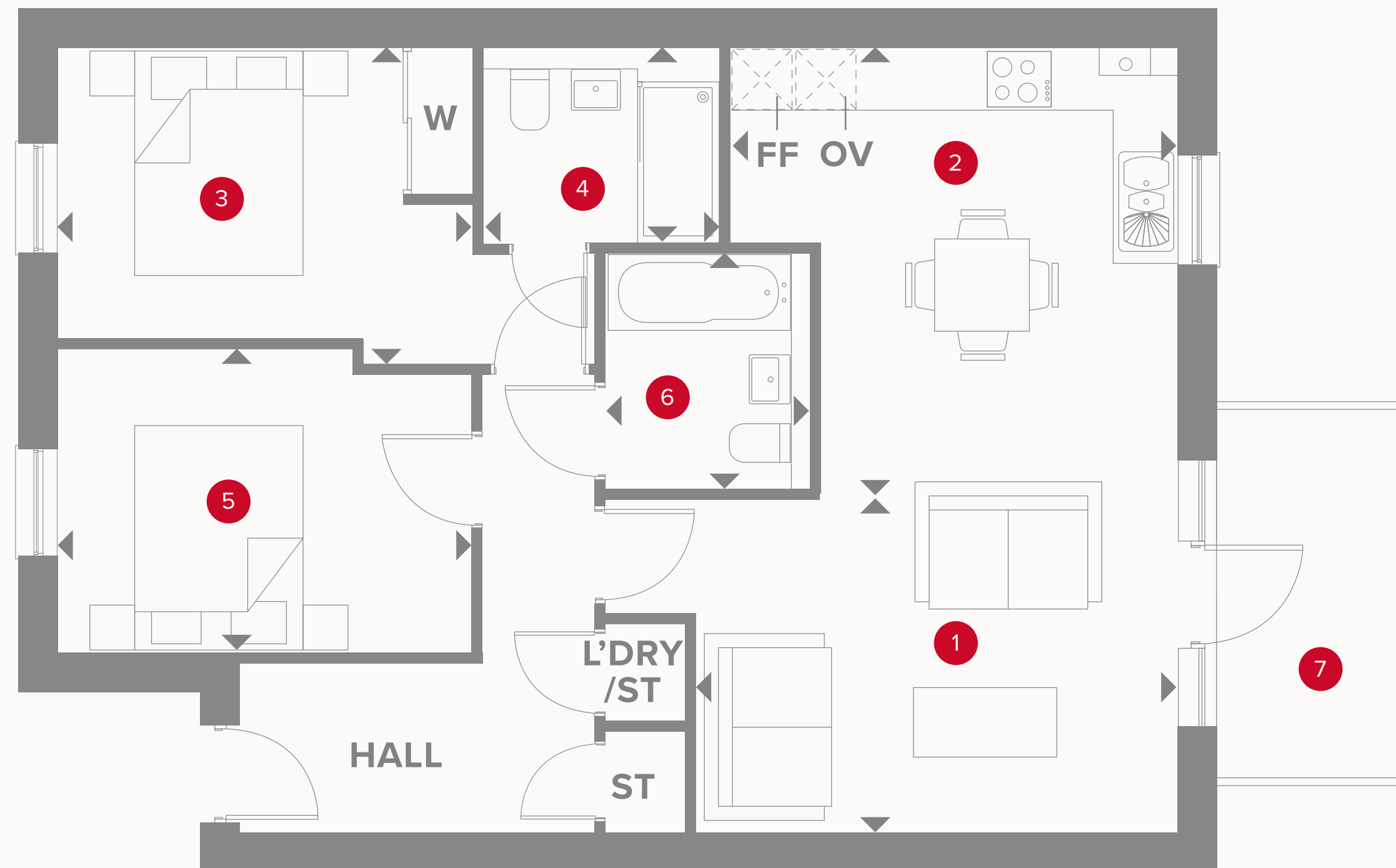


## KEY

-  Hob
-  OV Oven
-  FF Fridge/freezer

-  Dimensions start
-  ST Storage cupboard
-  W Wardrobe

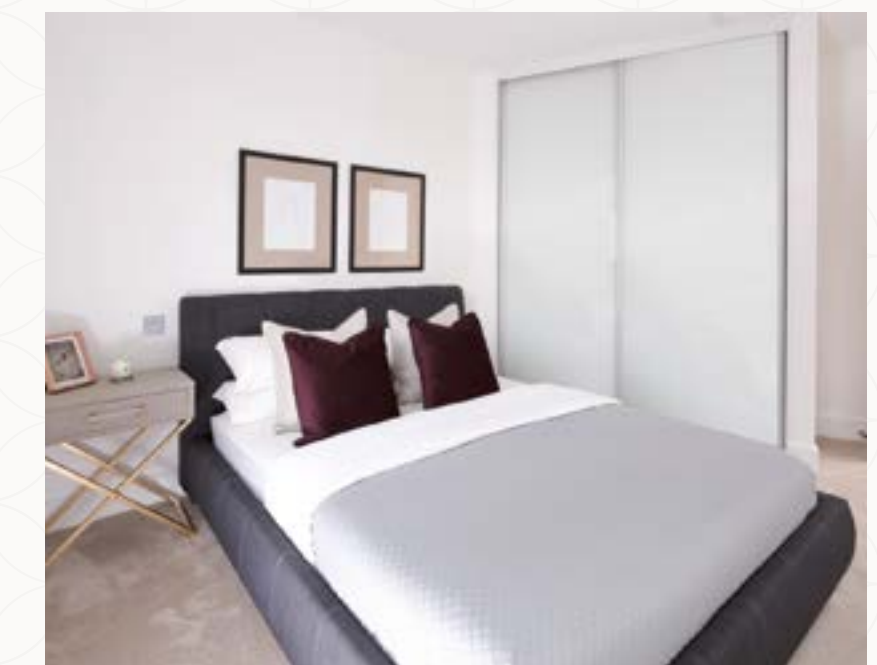
**CONSUMER  
CODE FOR  
HOME BUILDERS**  
[www.consumercode.co.uk](http://www.consumercode.co.uk)






Customers should note this illustration is an example of the Lords House apartments. All dimensions indicated are approximate and the furniture layout is for illustrative purposes only. Materials used may differ from plot to plot including render and roof tile colours. Detailed plans and specifications are available for inspection for each plot at our CES during working hours and customers must check their individual specifications prior to making a reservation. Please see Sales Consultant for further details.




# LORDS HOUSE APARTMENT TYPE 4 PLOTS 799 & 802

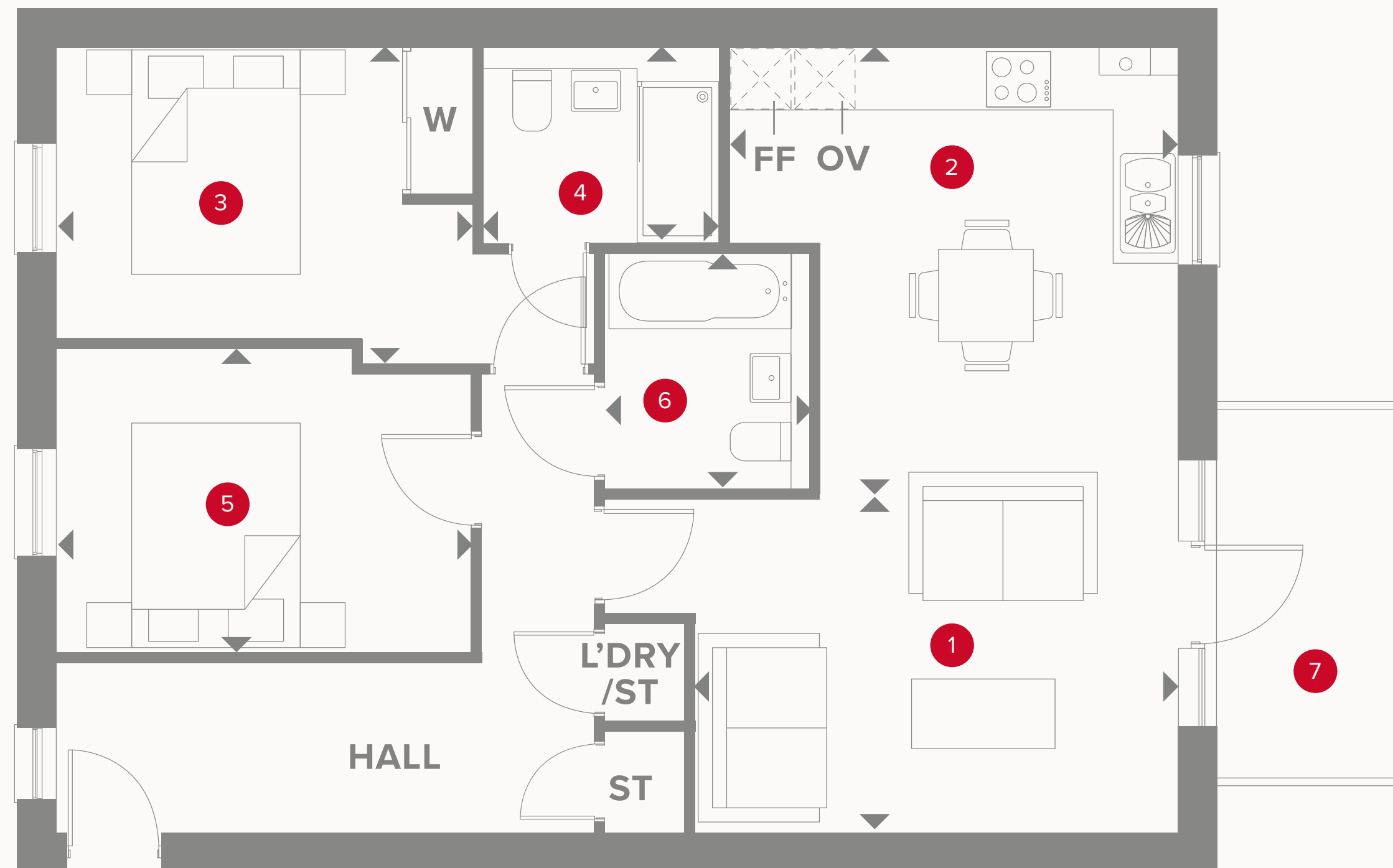
1	Lounge	14'6" x 10'1"	4.47 x 3.09 m
2	Kitchen/Dining	13'8" x 13'6"	4.22 x 4.15 m
3	Bedroom 1	12'6" x 9'0"	3.86 x 2.75 m
4	En-Suite	7'2" x 5'2"	2.20 x 1.61 m
5	Bedroom 2	12'6" x 9'1"	3.86 x 2.79 m
6	Bathroom	7'2" x 5'5"	2.20 x 1.70 m
7	Balcony	9'8" x 6'5"	3.00 x 2.00 m



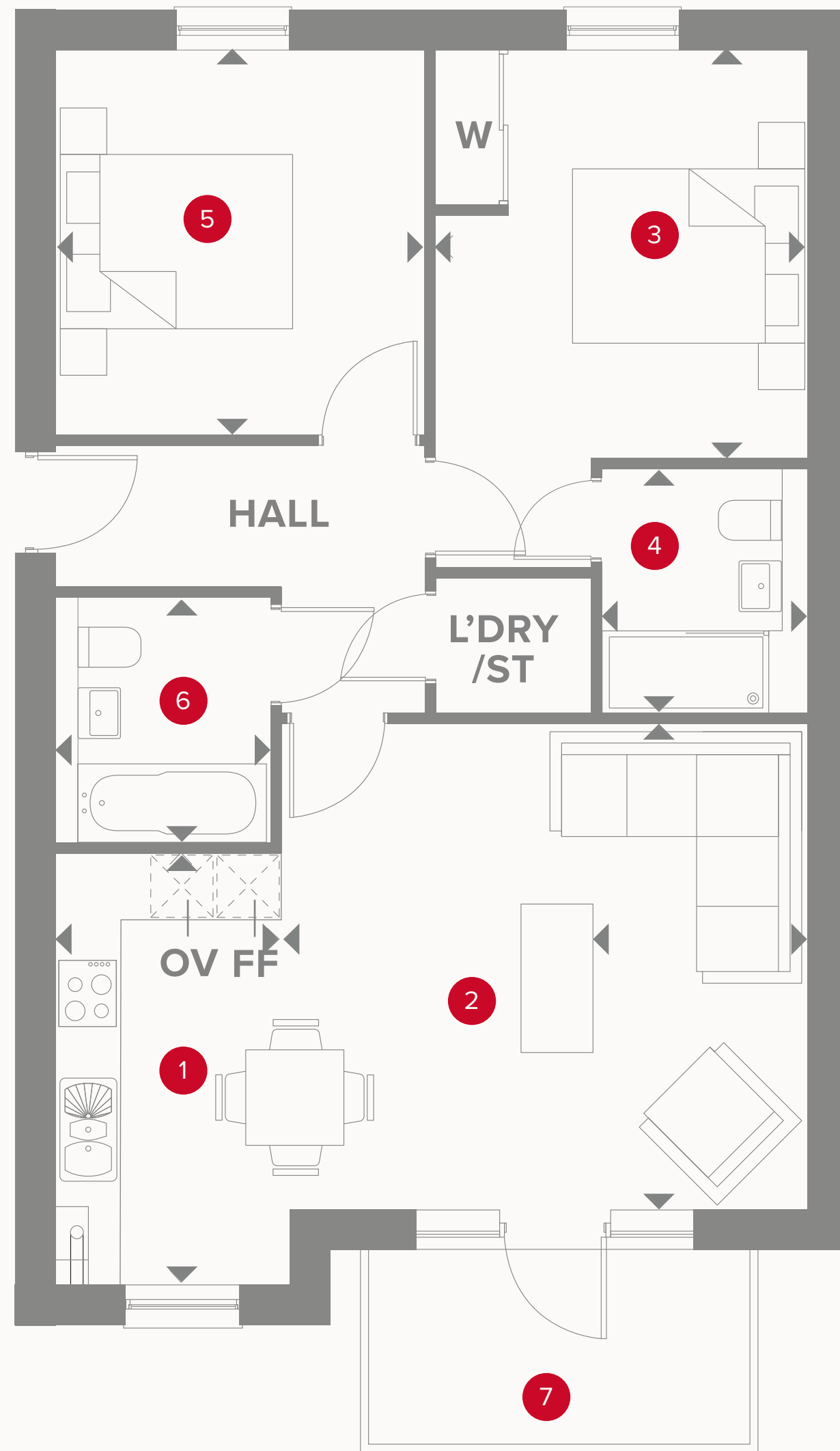
## KEY

-  Hob
-  OV Oven
-  FF Fridge/freezer

-  Dimensions start
-  ST Storage cupboard
-  W Wardrobe



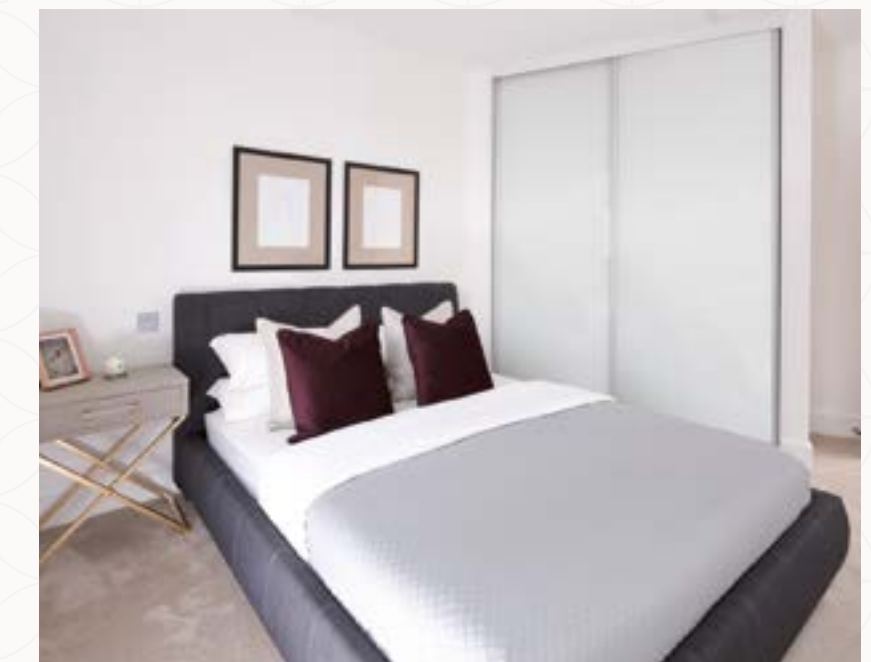
Customers should note this illustration is an example of the Lords House apartments. All dimensions indicated are approximate and the furniture layout is for illustrative purposes only. Materials used may differ from plot to plot including render and roof tile colours. Detailed plans and specifications are available for inspection for each plot at our CES during working hours and customers must check their individual specifications prior to making a reservation. Please see Sales Consultant for further details.



# LORDS HOUSE APARTMENT TYPE 5

PLOTS 789, 791 & 793

1	Kitchen	12'7" x 7'0"	3.88 x 2.13 m
2	Lounge/Dining	13'6" x 14'2"	4.16 x 4.35 m
3	Bedroom 1	12'0" x 10'9"	3.66 x 3.33 m
4	En-Suite	7'2" x 5'2"	2.20 x 1.61 m
5	Bedroom 2	11'3" x 10'9"	3.46 x 3.33 m
6	Bathroom	7'2" x 5'5"	2.20 x 1.70 m
7	Balcony	9'8" x 6'5"	3.00 x 2.00 m



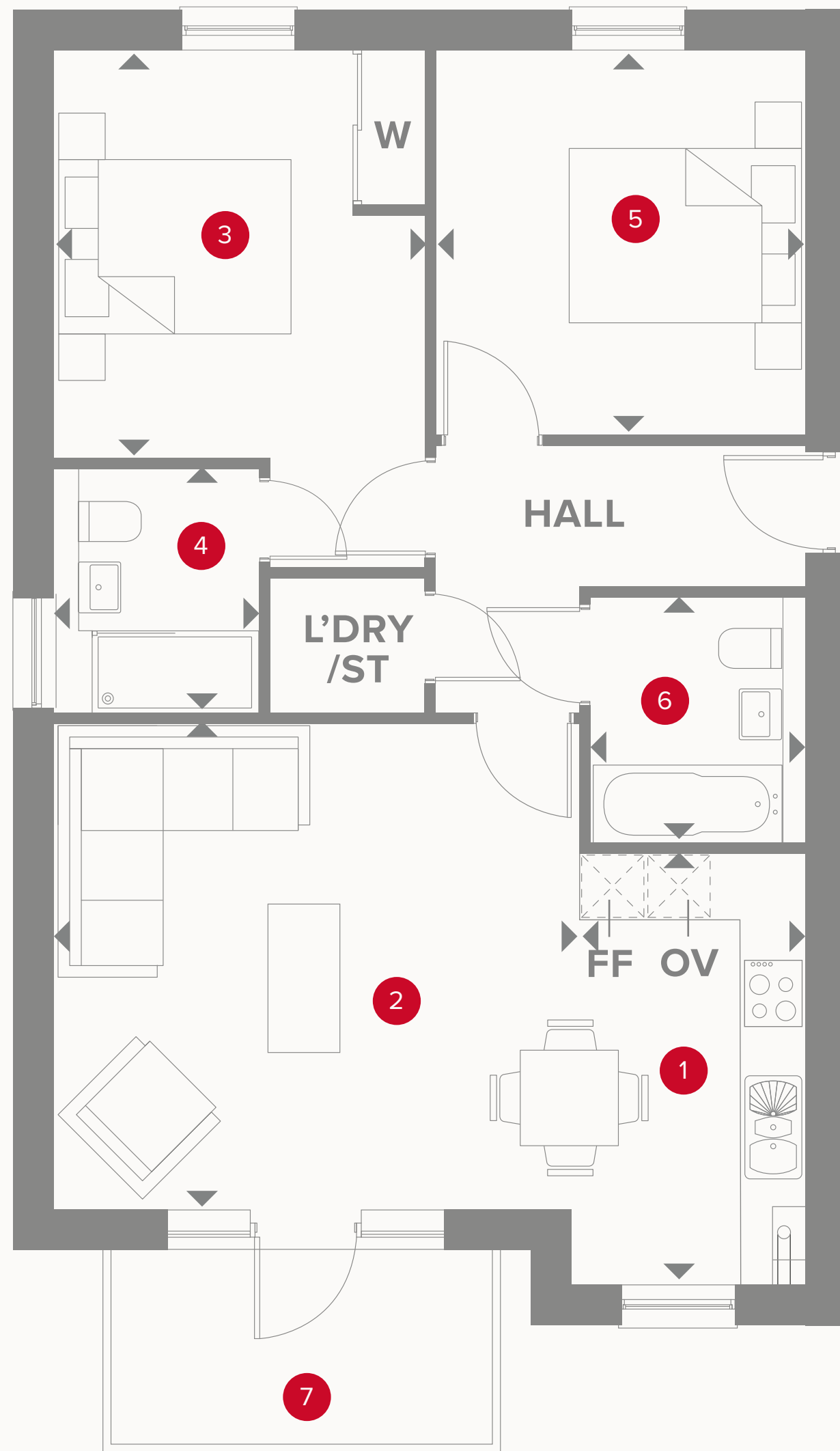
## KEY

Hob  
 Oven  
 Fridge/freezer

Dimensions start  
 Storage cupboard  
 Wardrobe

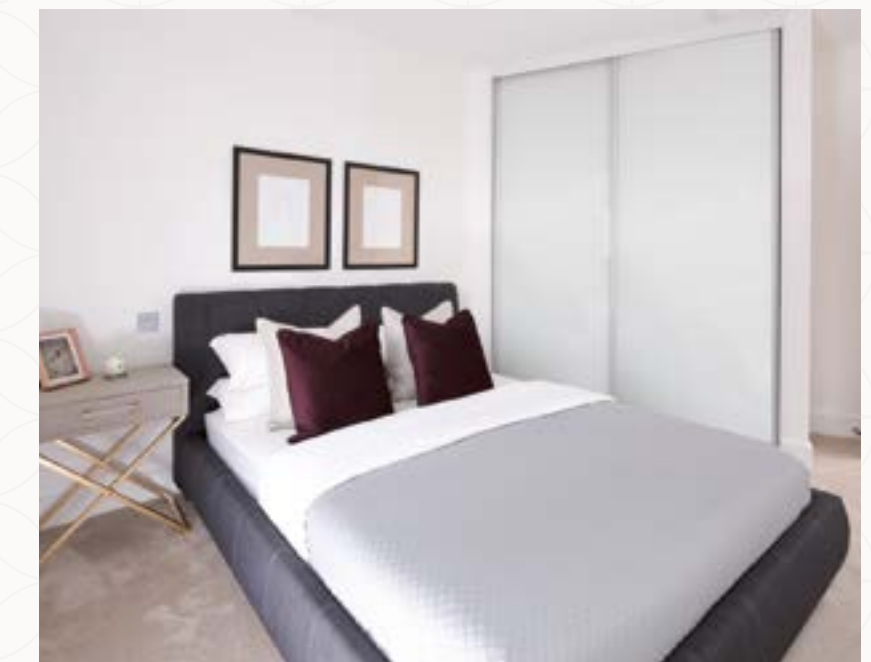
Customers should note this illustration is an example of the Lords House apartments. All dimensions indicated are approximate and the furniture layout is for illustrative purposes only. Materials used may differ from plot to plot including render and roof tile colours. Detailed plans and specifications are available for inspection for each plot at our CES during working hours and customers must check their individual specifications prior to making a reservation. Please see Sales Consultant for further details.

**CONSUMER  
CODE FOR  
HOME BUILDERS**  
[www.consumercode.co.uk](http://www.consumercode.co.uk)



# LORDS HOUSE APARTMENT TYPE 5 (HANDED) PLOTS 790 & 792

1	Kitchen	12'7" x 7'0"	3.88 x 2.13 m
2	Lounge/Dining	13'6" x 14'2"	4.16 x 4.35 m
3	Bedroom 1	12'0" x 10'9"	3.66 x 3.33 m
4	En-Suite	7'2" x 5'2"	2.20 x 1.61 m
5	Bedroom 2	11'3" x 10'9"	3.46 x 3.33 m
6	Bathroom	7'2" x 5'5"	2.20 x 1.70 m
7	Balcony	9'8" x 6'5"	3.00 x 2.00 m



## KEY

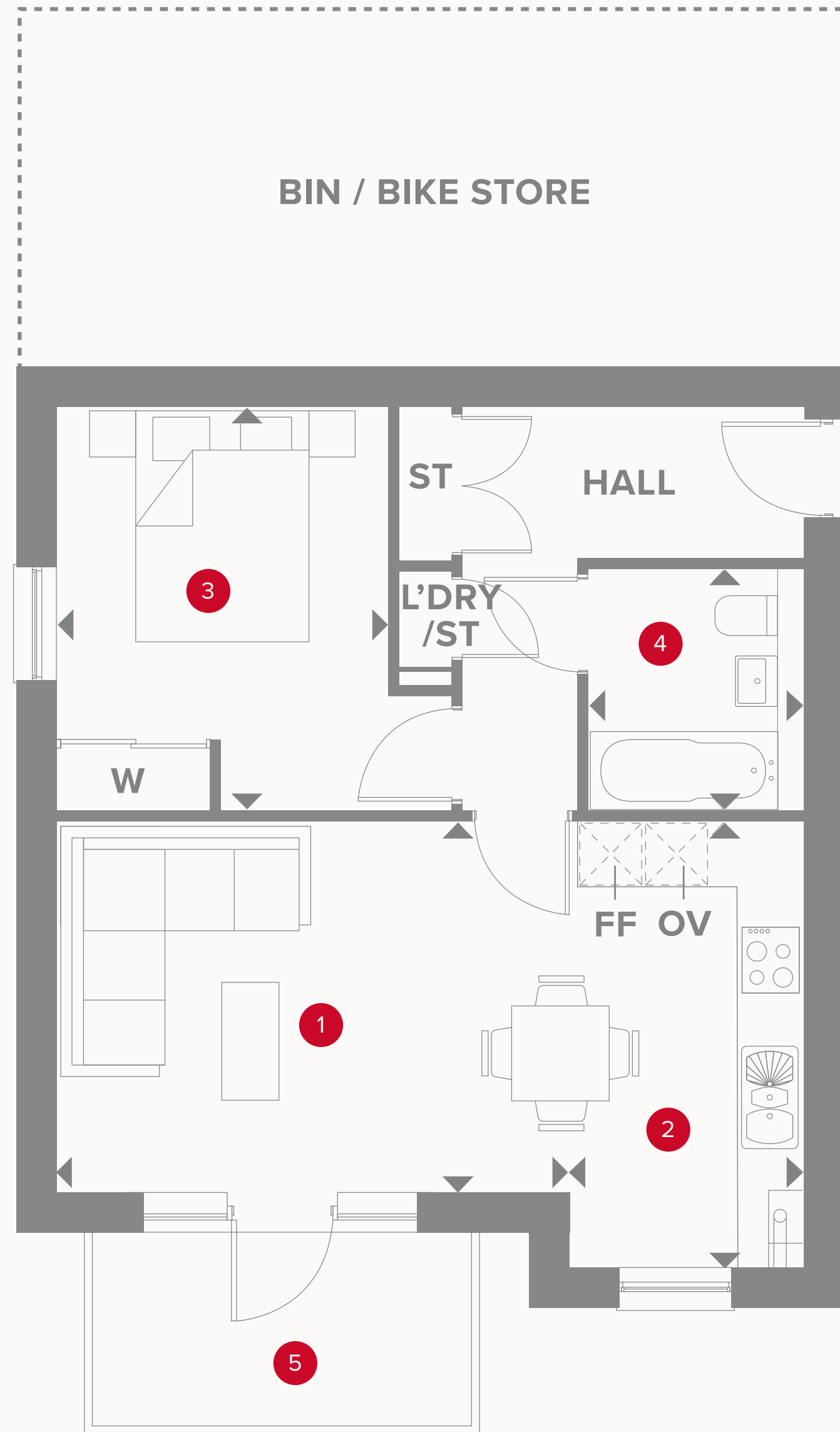
Hob  
 OV Oven  
 FF Fridge/freezer

Dimensions start  
 ST Storage cupboard  
 W Wardrobe

Customers should note this illustration is an example of the Lords House apartments. All dimensions indicated are approximate and the furniture layout is for illustrative purposes only. Materials used may differ from plot to plot including render and roof tile colours. Detailed plans and specifications are available for inspection for each plot at our CES during working hours and customers must check their individual specifications prior to making a reservation. Please see Sales Consultant for further details.

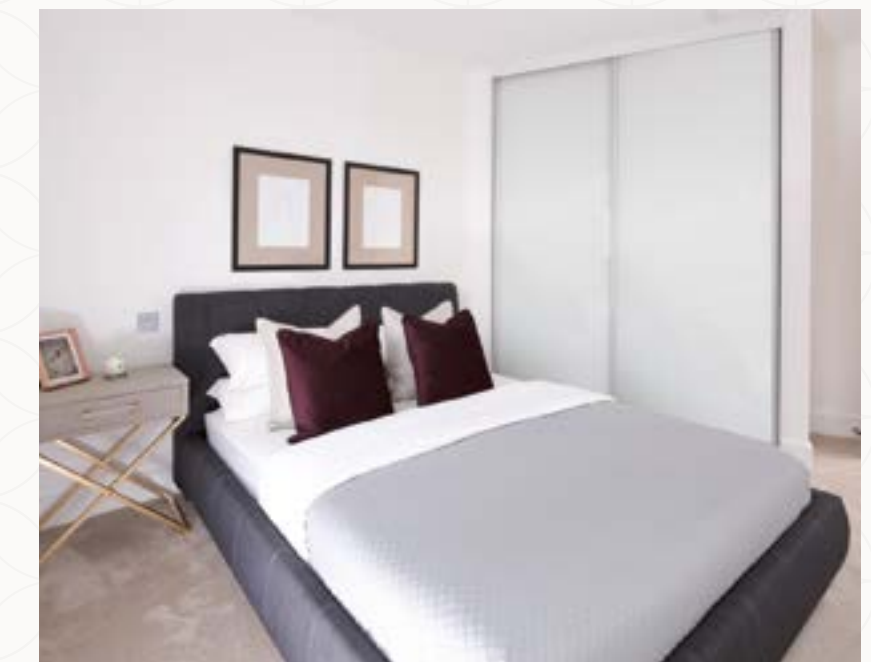
**CONSUMER  
CODE FOR  
HOME BUILDERS**  
[www.consumercode.co.uk](http://www.consumercode.co.uk)











# LORDS HOUSE APARTMENT TYPE 6 PLOT 788

1	Lounge/Dining	15'1" x 11'1"	4.61 x 3.37 m
2	Kitchen	13'3" x 6'12"	4.04 x 2.13 m
3	Bedroom	11'1" x 9'10"	3.64 x 3.00 m
4	Bathroom	7'2" x 5'5"	2.20 x 1.70 m
5	Balcony	9'8" x 6'5"	3.00 x 2.00 m



## KEY

 Hob  
 Oven  
 Fridge/freezer

 Dimensions start  
 Storage cupboard  
 Wardrobe

Customers should note this illustration is an example of the Lords House apartments. All dimensions indicated are approximate and the furniture layout is for illustrative purposes only. Materials used may differ from plot to plot including render and roof tile colours. Detailed plans and specifications are available for inspection for each plot at our CES during working hours and customers must check their individual specifications prior to making a reservation. Please see Sales Consultant for further details.

**CONSUMER  
CODE FOR  
HOME BUILDERS**  
[www.consumercode.co.uk](http://www.consumercode.co.uk)