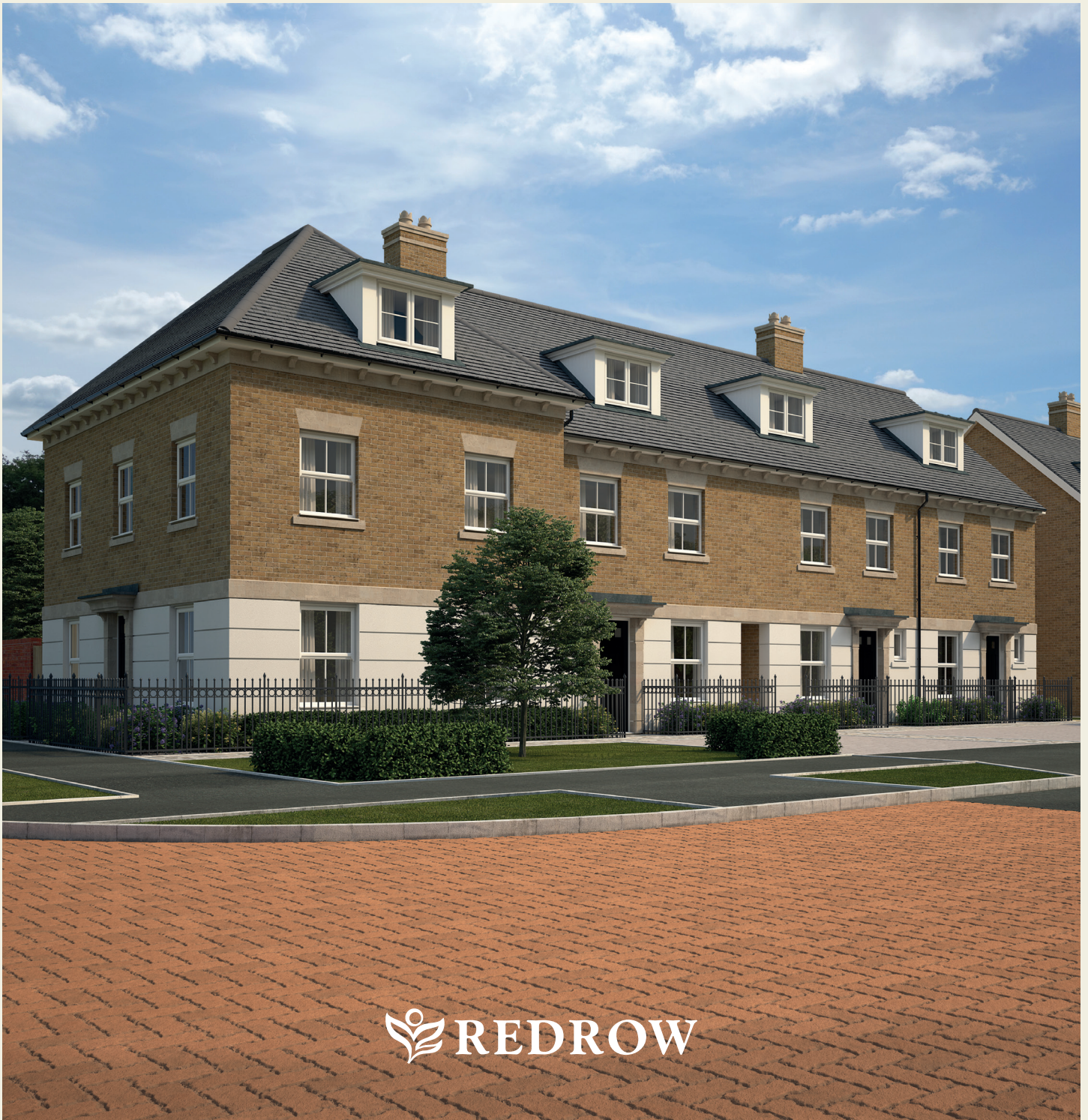




# WILMINGTON<sup>MID</sup>

FOUR BEDROOM HOME



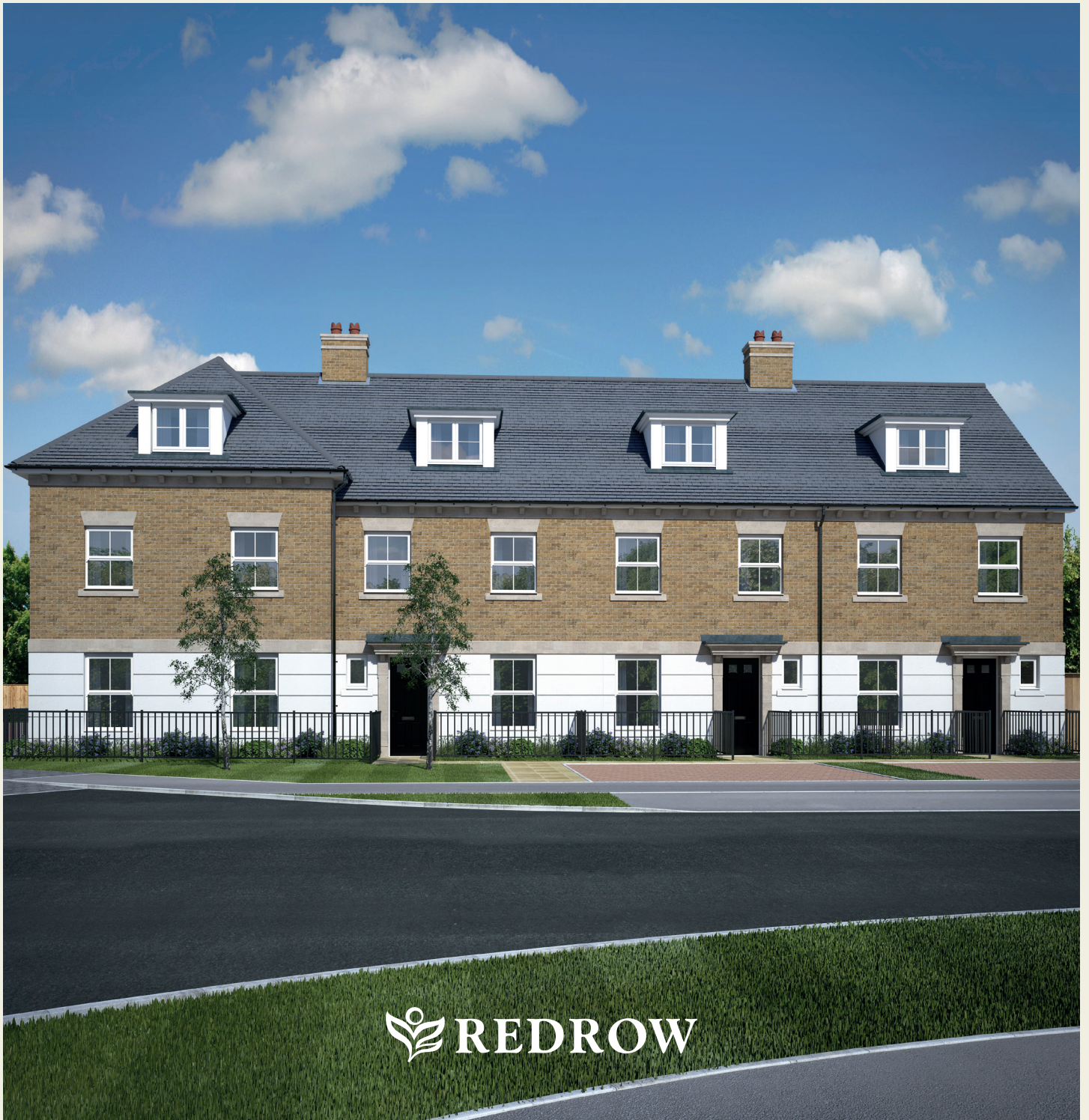
 REDROW





# WILMINGTON<sup>MID</sup>

FOUR BEDROOM HOME



 REDROW





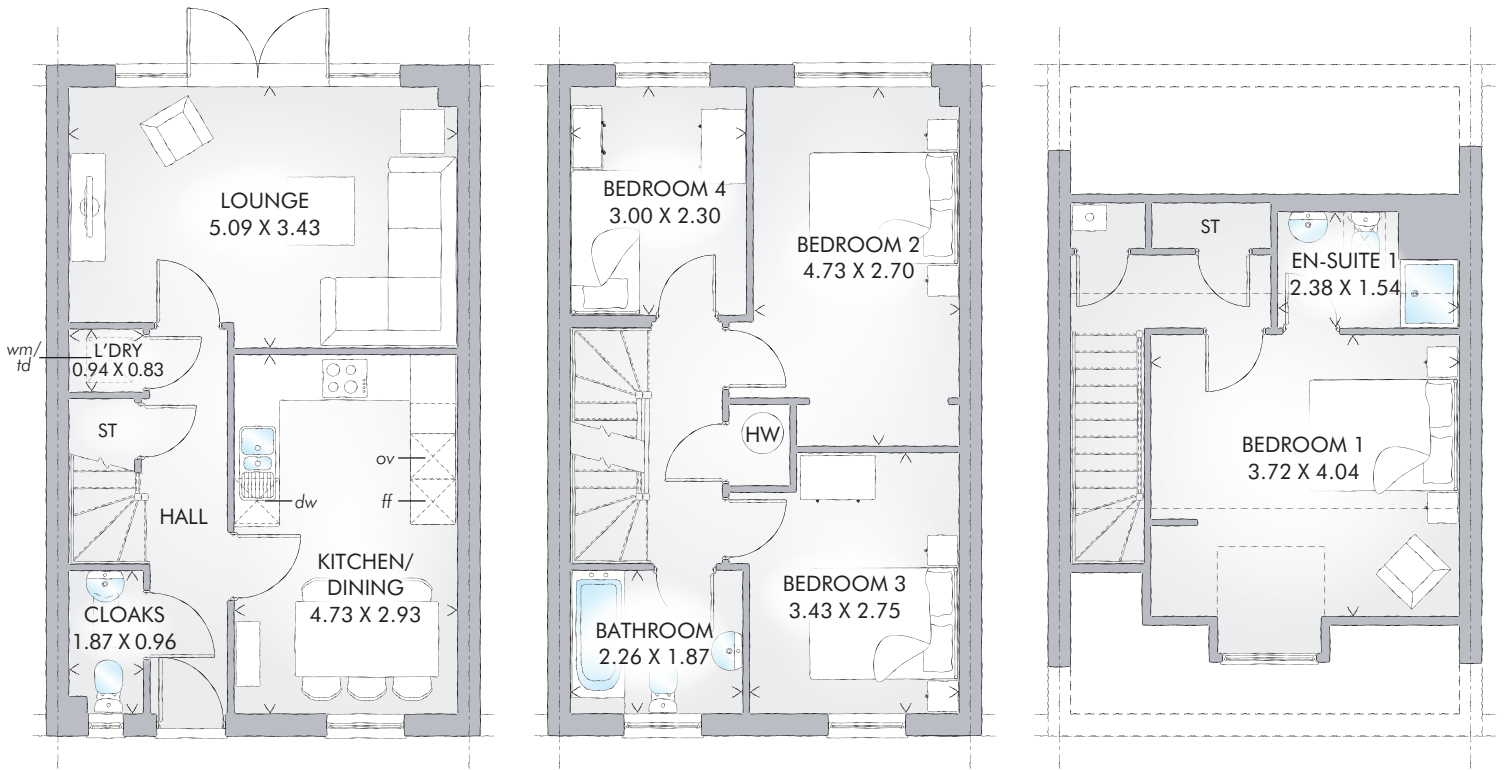
# WILMINGTON<sup>MID</sup>

FOUR BEDROOM HOME



 REDROW

# WILMINGTON<sup>MID</sup>



The Wilmington<sup>MID</sup> combines the impressive architecture of the Regent Collection, with the flexibility of two and a half storey living, to create a spacious home that's perfect for the larger family, including a magnificent master suite on the second floor.

## FOUR BEDROOM HOME

### GROUND FLOOR

Lounge	16'8" x 11'3"	5.09 x 3.43 m
Kitchen/ Dining	15'6" x 9'7"	4.73 x 2.93 m
Cloaks	6'2" x 3'2"	1.87 x 0.96 m
Laundry	3'1" x 2'9"	0.94 x 0.83 m

### FIRST FLOOR

Bedroom 2	15'6" x 8'10"	4.73 x 2.70 m
Bedroom 3	11'3" x 9'0"	3.43 x 2.75 m
Bedroom 4	9'10" x 7'7"	3.00 x 2.30 m
Bathroom	7'5" x 6'2"	2.26 x 1.87 m

### SECOND FLOOR

Bedroom 1	13'8" x 13'3"	3.72 x 4.04 m
En-suite	7'10" x 5'1"	2.38 x 1.54 m

### CONSUMER CODE FOR HOME BUILDERS

[www.consumercode.co.uk](http://www.consumercode.co.uk)

Customers should note this illustration is an example of the Wilmington<sup>MID</sup> house type. All dimensions indicated are approximate and furniture layout is for illustrative purposes only. Homes may be a 'handed' (mirror image) versions of the illustrations, and may be detached, semi-detached or terraced. Materials used may differ from plot to plot including render and roof tile colours. Detailed plans and specifications are available for inspection for each plot at our Sales Centre during working hours and customers must check their individual specifications prior to making reservation.

KEY Hob Oven Fridge/freezer Washing machine space Dishwasher space Tumble dryer space Hot water cylinder ST Cupboard  
< Denotes where dimensions are taken from. All wardrobes are subject to site specification. Please see Sales Consultant for further details.

Traditional homes, built the way you remember

