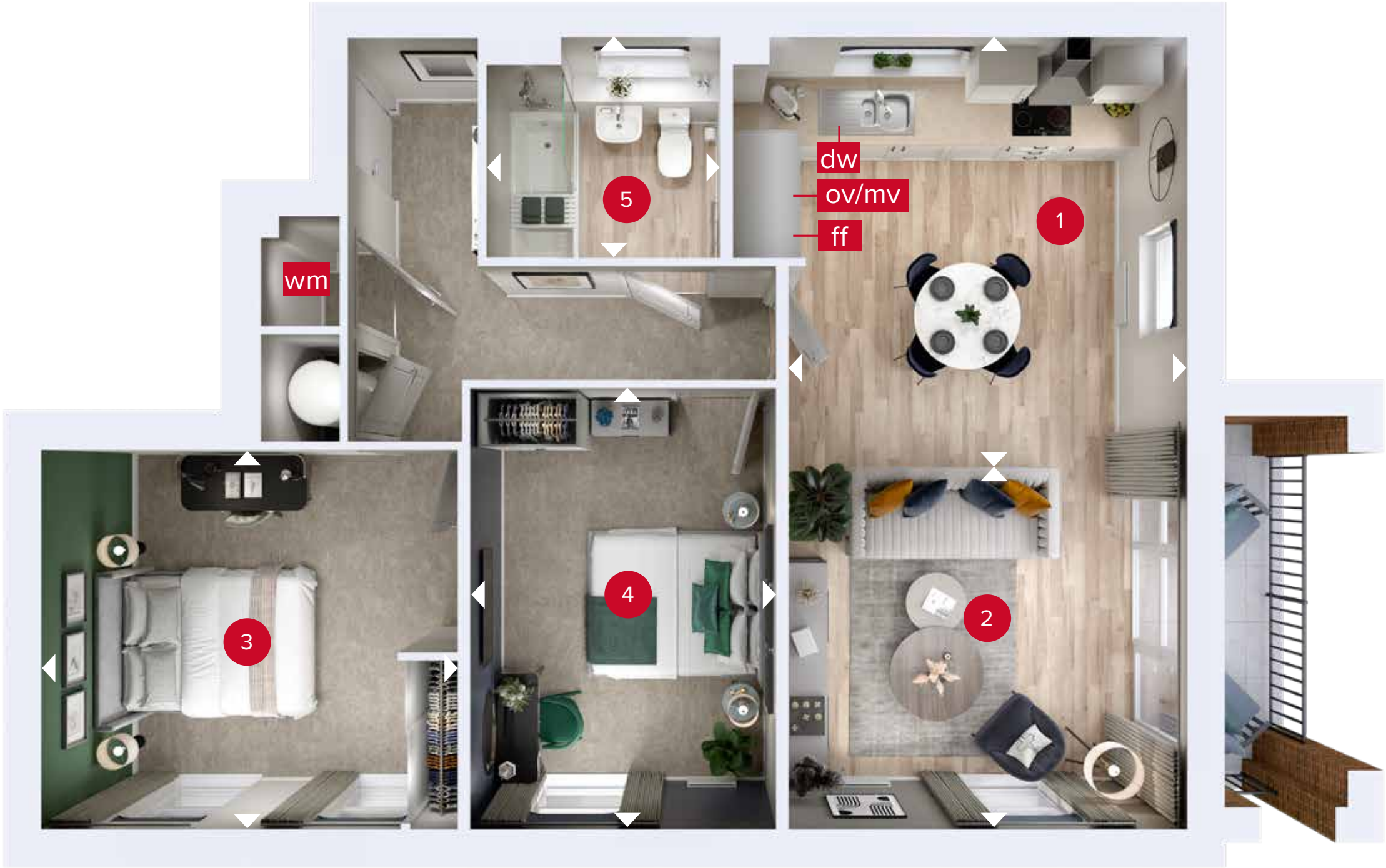


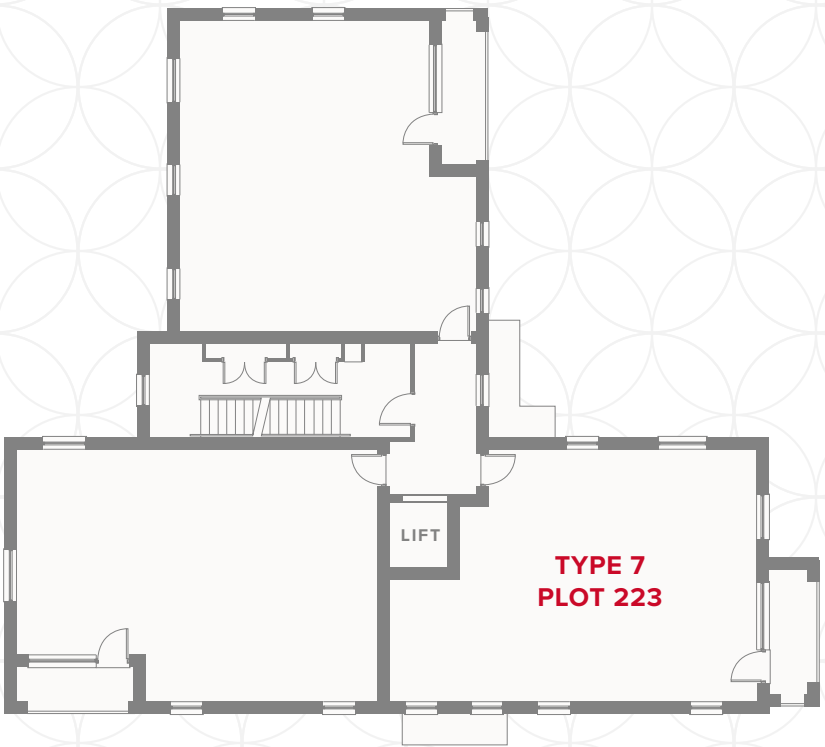
# THE ONYX

PLOT 223



# STONEHAVEN PARK APARTMENTS SECOND FLOOR

1	Kitchen/Dining	17'3" x 12'1"	5.27 x 3.68 m
2	Lounge	13'9" x 6'7"	4.19 x 2.01 m
3	Bedroom 1	12'7" x 11'6"	3.85 x 3.50 m
4	Bedroom 2	13'4" x 9'3"	4.07 x 2.82 m
5	Bathroom	7'1" x 6'7"	2.17 x 2.01 m



SECOND FLOOR

Customers should note this illustration is an example of the Stonehaven Park Apartments. All dimensions indicated are approximate and the furniture layout is for illustrative purposes only. Detailed plans and specifications are available for inspection for each plot at our Customer Experience Suite during working hours and customers must check their individual specifications prior to making a reservation. Please see Sales Consultant for further details.

▷ Denotes where dimensions are taken from. All wardrobes are subject to site specification. Please see Sales Consultant for further details.

ov/mv - oven & microwave  
ff - fridge freezer  
dw - dishwasher  
wm - washing machine space



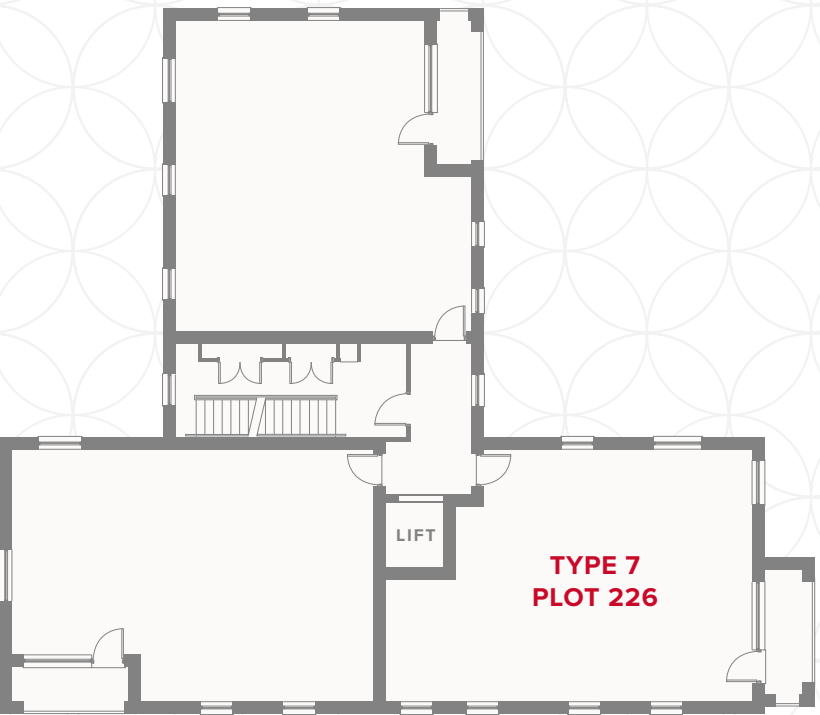
# THE ONYX

PLOT 226



# STONEHAVEN PARK APARTMENTS THIRD FLOOR

1	Kitchen/Dining	17'3" x 12'1"	5.27 x 3.68 m
2	Lounge	13'9" x 6'7"	4.19 x 2.01 m
3	Bedroom 1	12'7" x 11'6"	3.85 x 3.50 m
4	Bedroom 2	13'4" x 9'3"	4.07 x 2.82 m
5	Bathroom	7'1" x 6'7"	2.17 x 2.01 m



THIRD FLOOR

Customers should note this illustration is an example of the Stonehaven Park Apartments. All dimensions indicated are approximate and the furniture layout is for illustrative purposes only. Detailed plans and specifications are available for inspection for each plot at our Customer Experience Suite during working hours and customers must check their individual specifications prior to making a reservation. Please see Sales Consultant for further details.

▷ Denotes where dimensions are taken from. All wardrobes are subject to site specification. Please see Sales Consultant for further details.

ov/mv - oven & microwave      dw - dishwasher  
ff - fridge freezer                wm - washing machine space

