



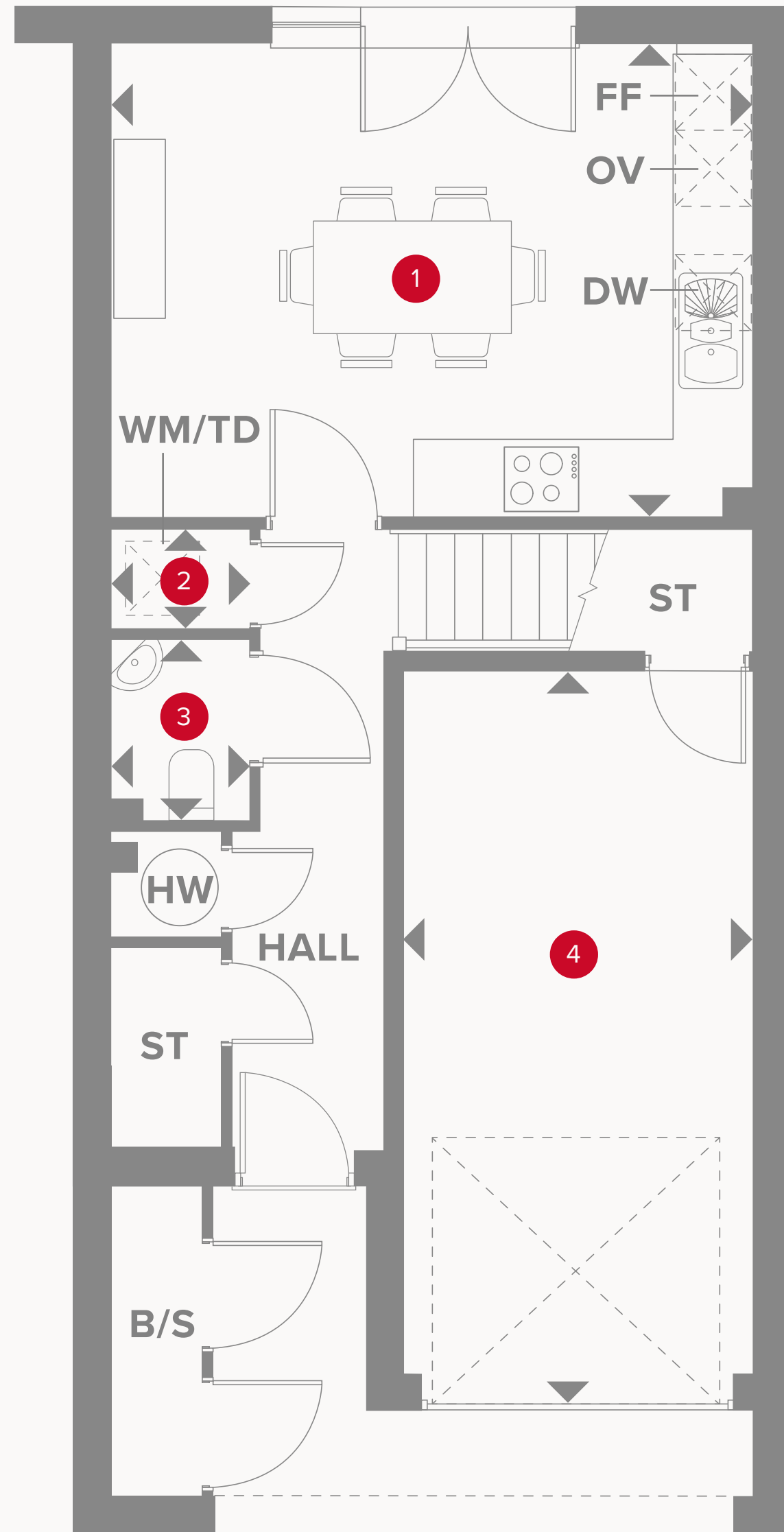
HERITAGE

- REDROW -

THE KENSINGTON

FOUR BEDROOM END TERRACED HOME

 **REDROW**




THE KENSINGTON GROUND FLOOR

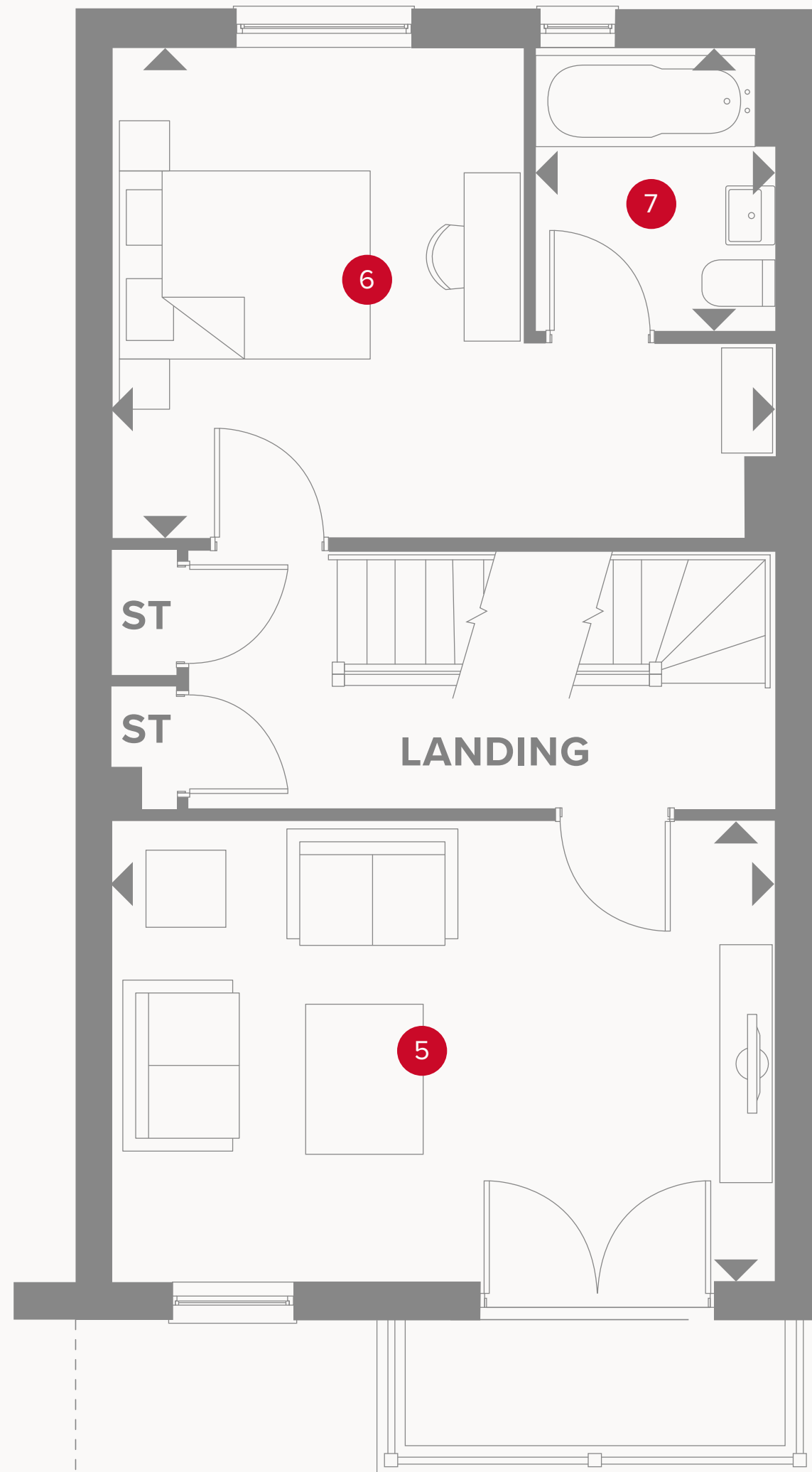
1	Kitchen/Dining	16'7" x 12'3"	5.06 x 3.73 m
2	Laundry	3'6" x 2'5"	1.06 x 0.77 m
3	Cloaks	4'10" x 3'6"	1.47 x 1.06 m
4	Garage	19'4" x 9'1"	5.89 x 2.78 m



KEY

 Hob
OV Oven
FF Fridge/freezer
WM Washing machine space
TD Tumble dryer space

DW Dish washer space
ST Storage cupboard
HW Hot water cylinder
B/S Bin store
 Dimensions start



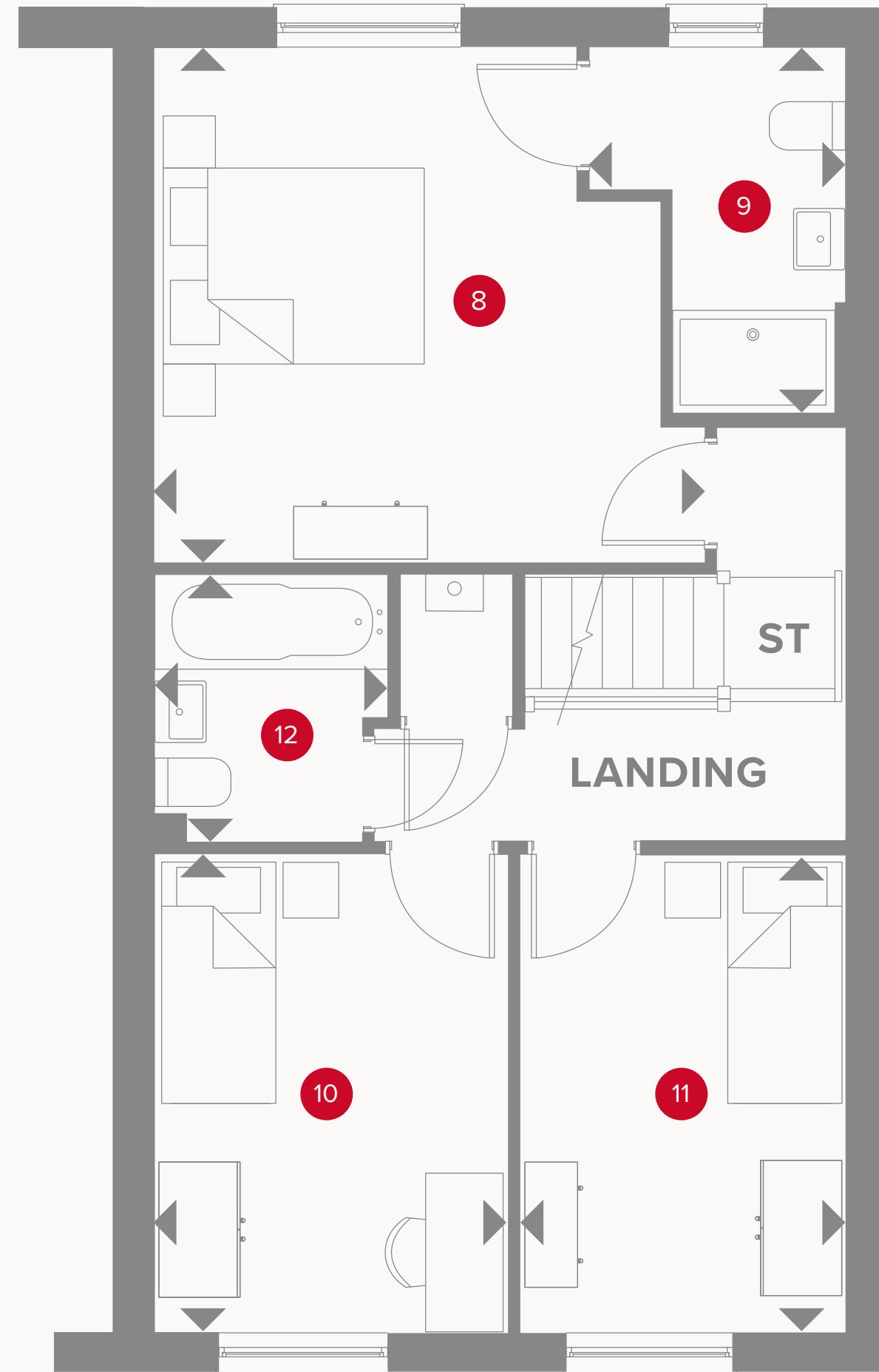
THE KENSINGTON FIRST FLOOR

5	Lounge	16'7" x 11'8"	5.06 x 3.56 m
6	Bedroom 1	16'7" x 12'3"	5.06 x 3.73 m
7	En-suite 1	7'1" x 6'2"	2.16 x 1.83 m



KEY

- ◀ Dimensions start
- ST Storage cupboard



THE KENSINGTON SECOND FLOOR

8	Bedroom 2	13'3" x 12'5"	4.04 x 3.79 m
9	En-suite 2	8'9" x 6'2"	2.67 x 1.87 m
10	Bedroom 3	11'6" x 8'1"	3.54 x 2.47 m
11	Bedroom 4	11'4" x 8'1"	3.50 x 2.47 m
12	Bathroom	6'4" x 5'7"	1.97 x 1.71 m



**CONSUMER
CODE FOR
HOME BUILDERS**
www.consumercode.co.uk

Customers should note this illustration is an example of the Kensington End Terrace house type. All dimensions indicated are approximate and the furniture layout is for illustrative purposes only. Homes may be 'handed' (mirror image) versions of the illustrations, and may be detached, semi-detached or terraced. Materials used may differ from plot to plot including render and roof tile colours. Detailed plans and specifications are available for inspection for each plot at our Customer Experience Suites during working hours and customers must check their individual specifications prior to making a reservation. Computer generated images are for indicative purposes only.

KEY

- ◀ Dimensions start
- ST Storage cupboard