



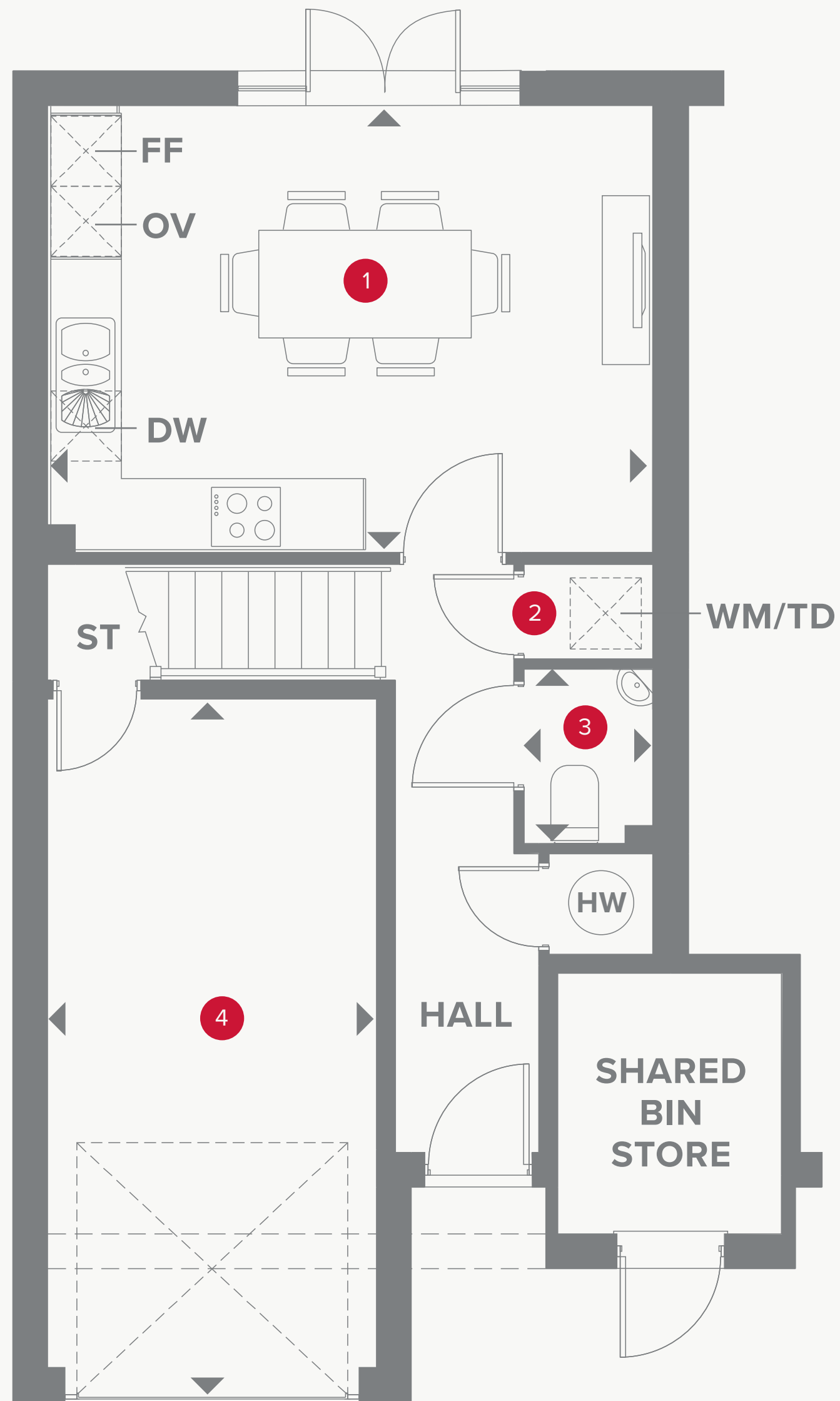
INSPIRED

- REDROW -

THE FITZROY SEMI

FOUR BEDROOM HOME







THE FITZROY SEMI GROUND FLOOR

1	Kitchen/ Dining	16'7" x 12'3"	5.06 x 3.73 m
2	Laundry	3'6" x 2'6"	1.06 x 0.77 m
3	Cloaks	4'10" x 3'6"	1.47 x 1.06 m
4	Garage	18'6" x 9'1"	5.64 x 2.78 m

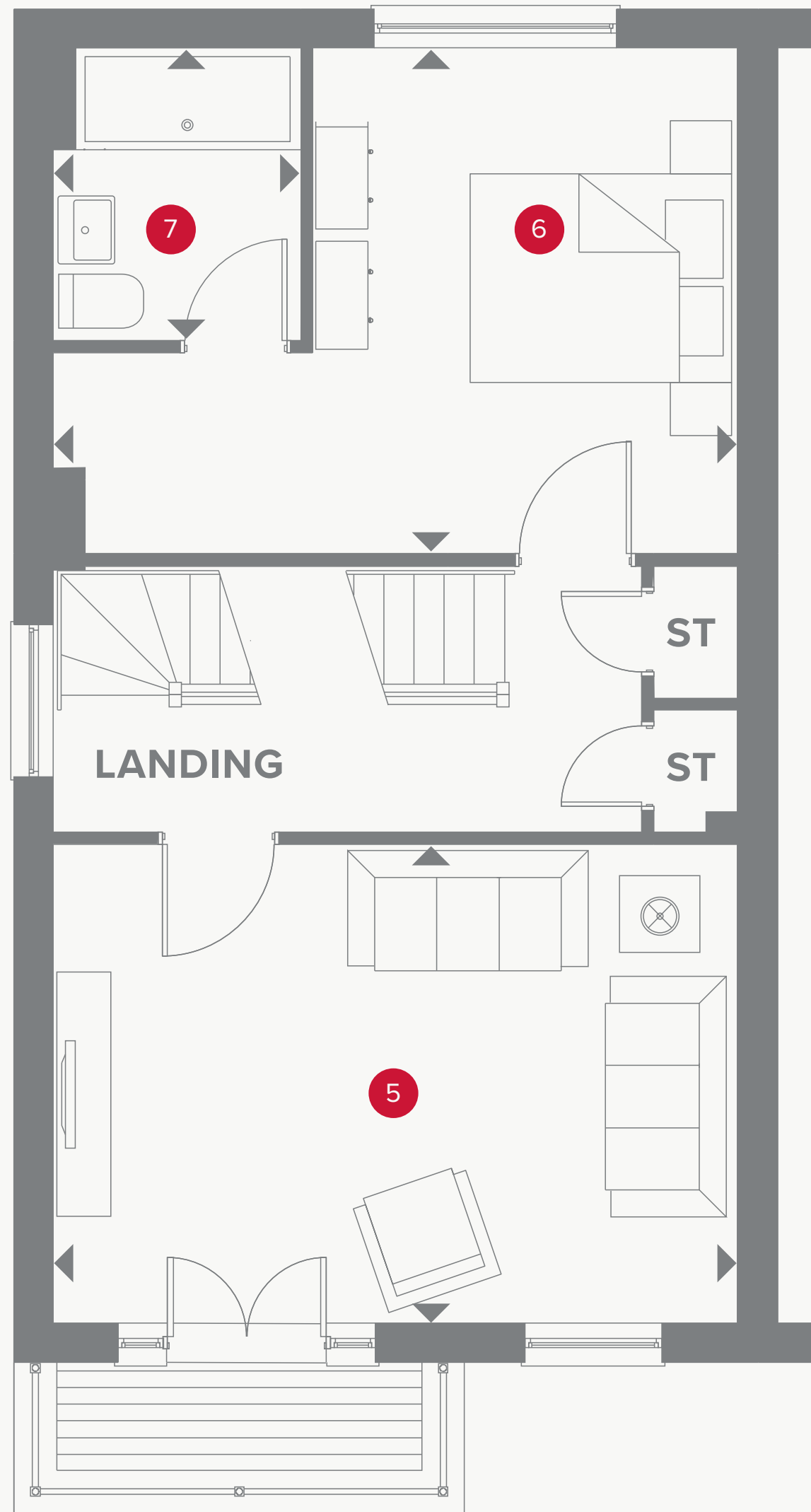


KEY

 Hob
OV Oven
FF Fridge/freezer
TD Tumble dryer space

 Dimensions start
ST Storage cupboard
WM Washing machine space
DW Dish washer space

HW Hot water storage



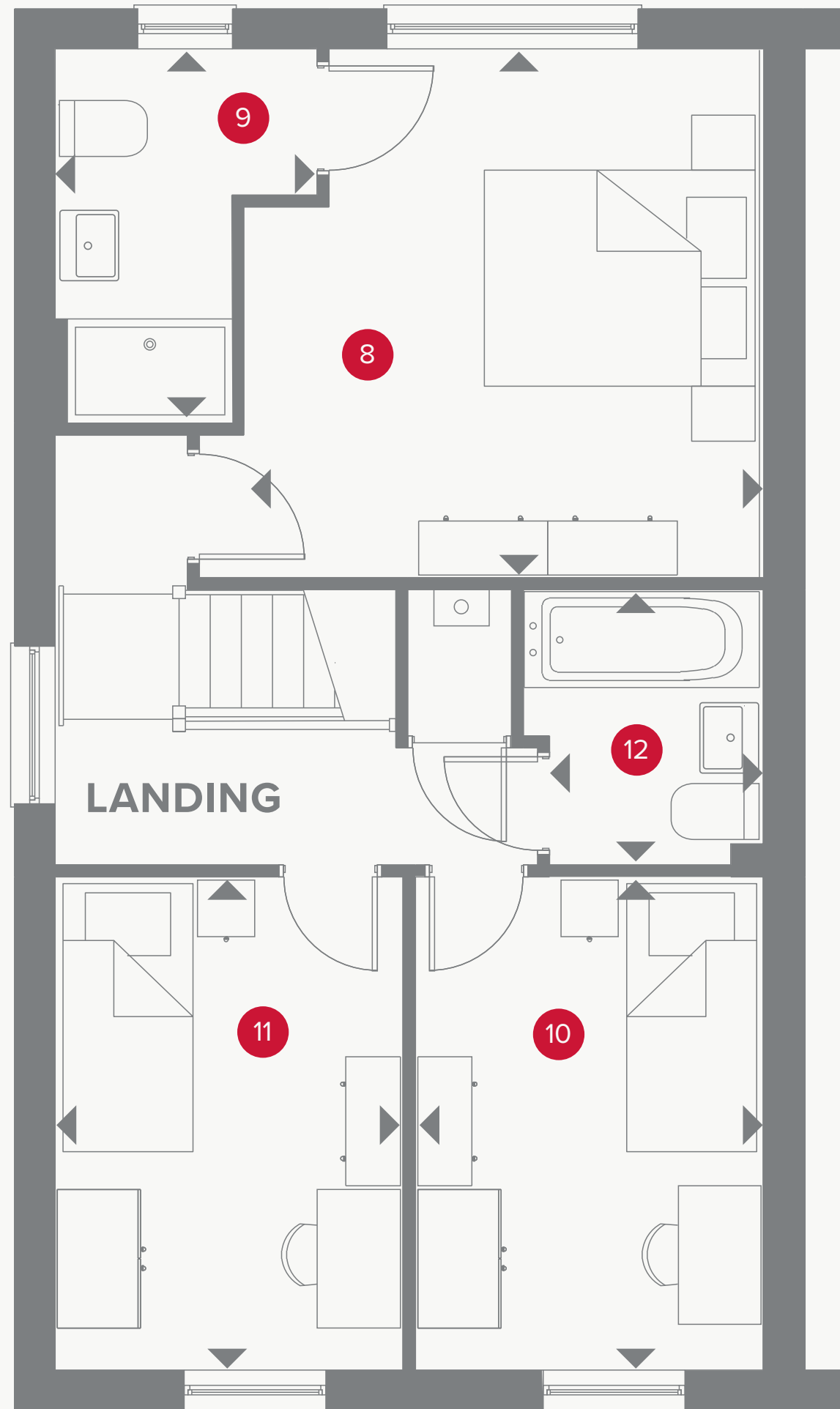
THE FITZROY SEMI FIRST FLOOR

5	Lounge	16'7" x 11'8"	5.06 x 3.56 m
6	Bedroom 1	16'7" x 12'3"	5.06 x 3.73 m
7	En-suite 1	7'0" x 6'0"	2.14 x 1.83 m



KEY

- ◀ Dimensions start
- ST Storage cupboard



THE FITZROY SEMI SECOND FLOOR

8	Bedroom 2	13'3" x 12'5"	4.04 x 3.79 m
9	En-suite 2	8'9" x 6'4"	2.67 x 1.92 m
10	Bedroom 3	11'7" x 8'6"	3.53 x 2.58 m
11	Bedroom 4	11'6" x 7'10"	3.50 x 2.40 m
12	Bathroom	6'6" x 5'7"	1.99 x 1.71 m



KEY

◀ Dimensions start



Customers should note this illustration is an example of the Fitzroy Semi house type. All dimensions indicated are approximate and the furniture layout is for illustrative purposes only. Homes may be 'handed' (mirror image) versions of the illustrations, and may be detached, semi-detached or terraced. Materials used may differ from plot to plot including render and roof tile colours. Detailed plans and specifications are available for inspection for each plot at our Customer Experience Suite during working hours and customers must check their individual specifications prior to making a reservation.