



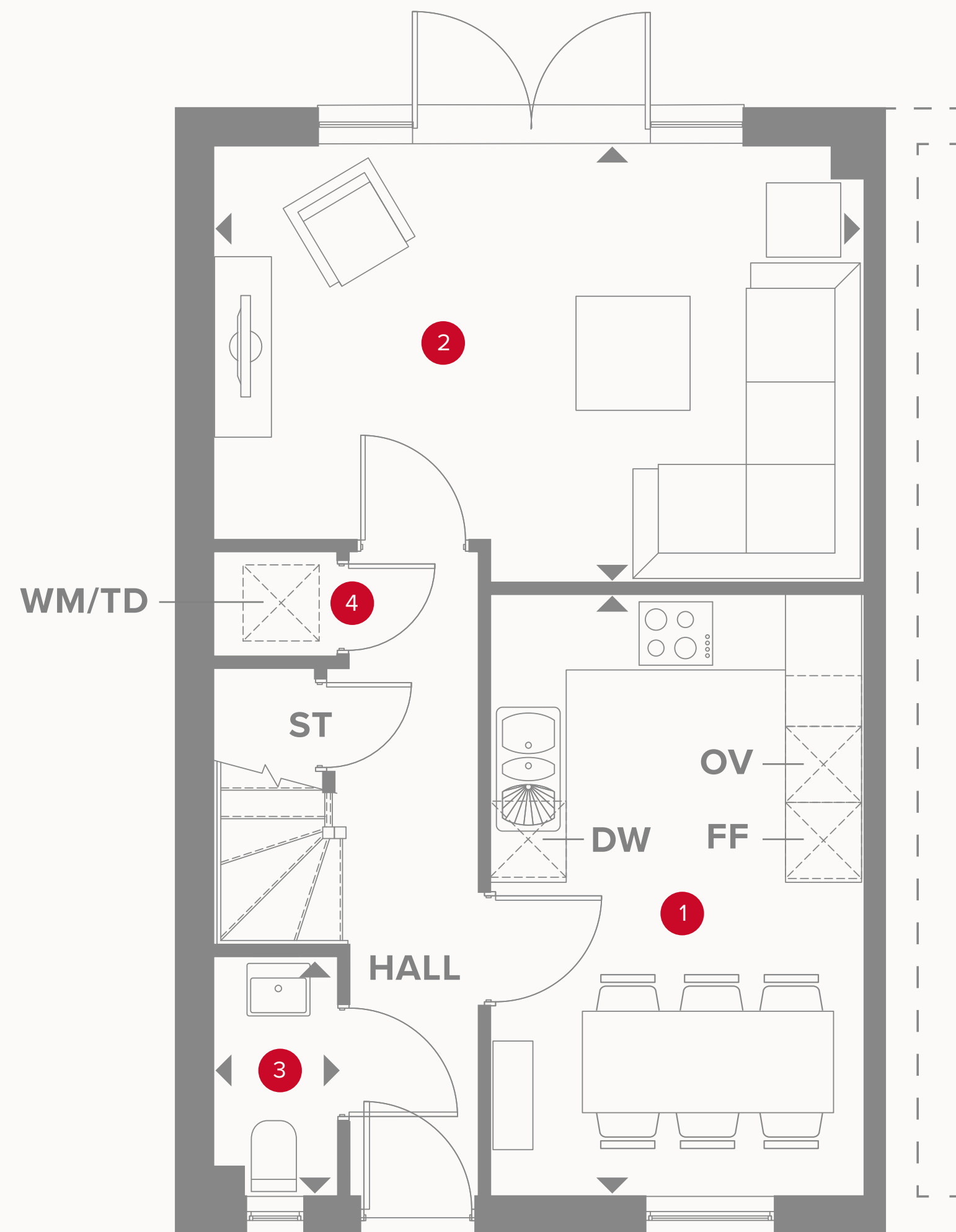
INSPIRED  
- REDROW -

# THE WILMINGTON SEMI

FOUR BEDROOM HOME







# THE WILMINGTON SEMI GROUND FLOOR

1	Kitchen/ Dining	15'6" x 9'7"	4.73 x 2.93 m
2	Lounge	16'8" x 11'3"	5.09 x 3.43 m
3	Cloaks	6'2" x 3'2"	1.87 x 0.96 m
4	Laundry	3'1" x 2'9"	0.94 x 0.83 m



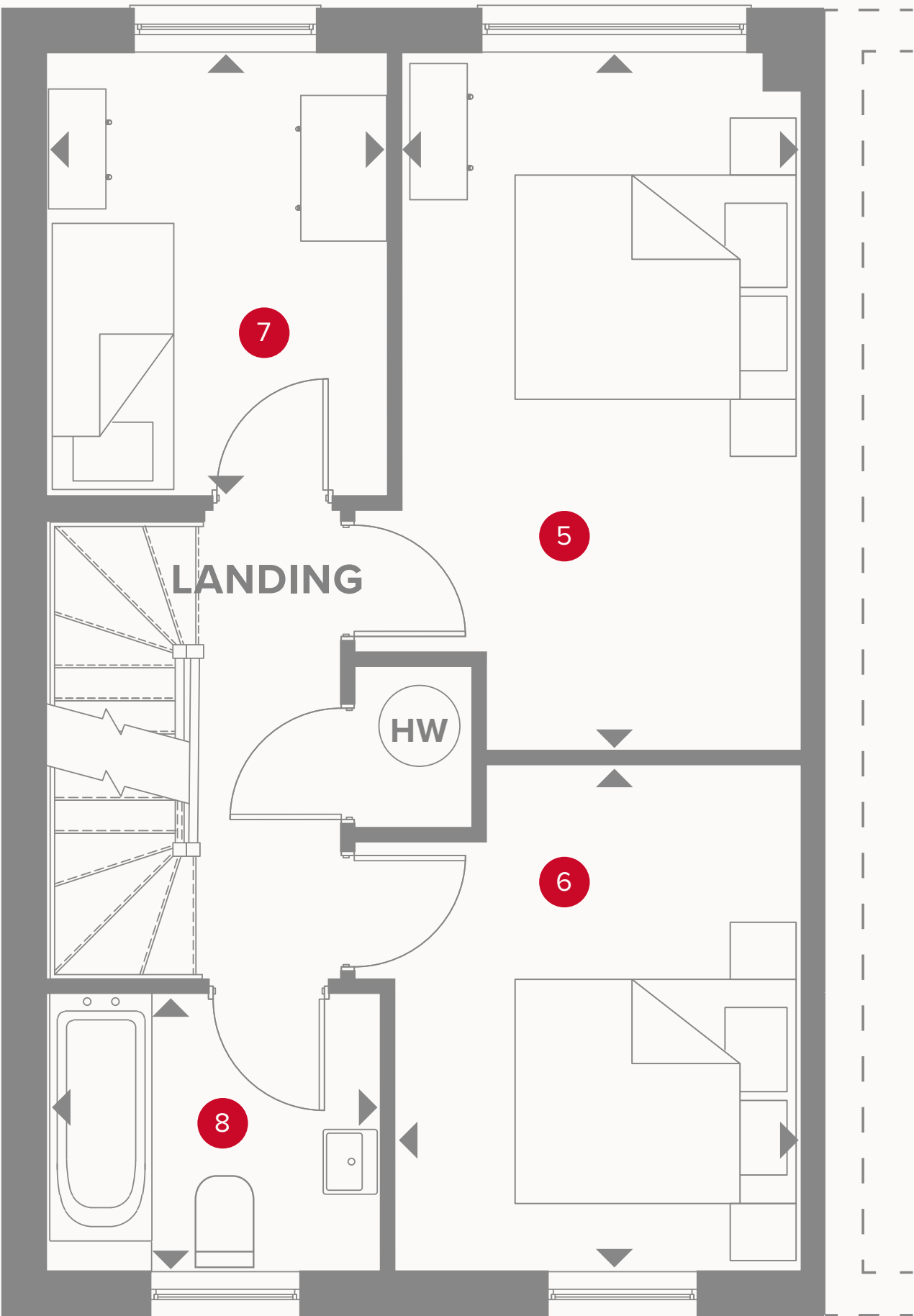
## KEY

- Hob
- OV** Oven
- FF** Fridge/freezer
- TD** Tumble dryer space

- Dimensions start
- ST** Storage cupboard
- WM** Washing machine space
- DW** Dish washer space

# THE WILMINGTON SEMI FIRST FLOOR

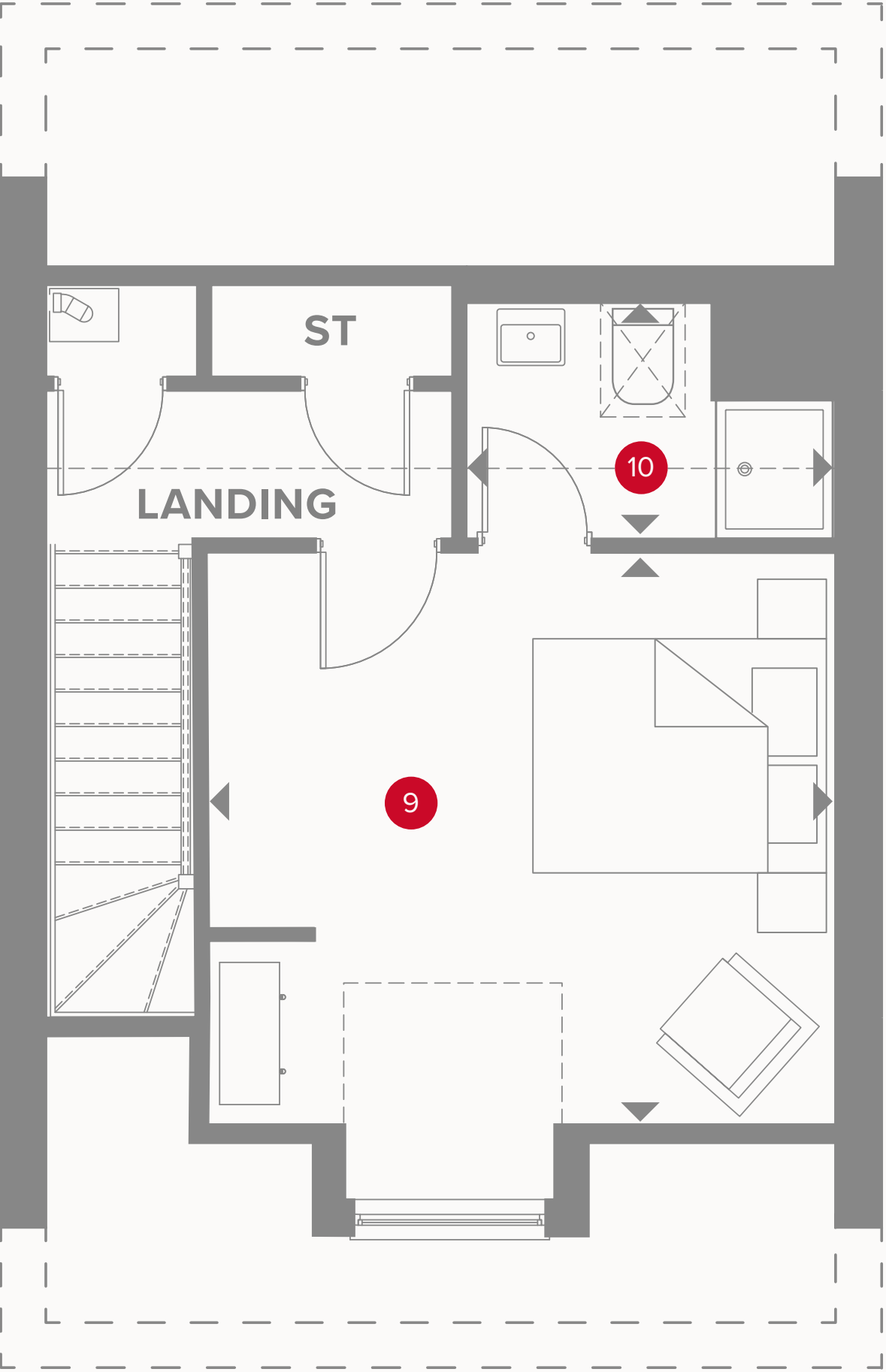
5	Bedroom 2	15'6" x 8'10"	4.73 x 2.70 m
6	Bedroom 3	11'3" x 9'0"	3.43 x 2.75 m
7	Bedroom 4	9'10" x 7'7"	3.00 x 2.30 m
8	Bathroom	7'5" x 6'2"	2.26 x 1.87 m



## KEY

- ◀ Dimensions start
- HW Hot Water





# THE WILMINGTON SEMI SECOND FLOOR

9	Bedroom 1	13'9" x 13'1"	4.18 x 4.00 m
10	En-suite	7'10" x 5'1"	2.38 x 1.54 m



## KEY

- ◀ Dimensions start
- ST Storage



Customers should note this illustration is an example of the Wilmington Semi house type. All dimensions indicated are approximate and the furniture layout is for illustrative purposes only. Homes may be 'handed' (mirror image) versions of the illustrations, and may be detached, semi-detached or terraced. Materials used may differ from plot to plot including render and roof tile colours. Detailed plans and specifications are available for inspection for each plot at our Customer Experience Suite during working hours and customers must check their individual specifications prior to making a reservation.