



Stratford

FOUR BEDROOM HOME



 REDROW

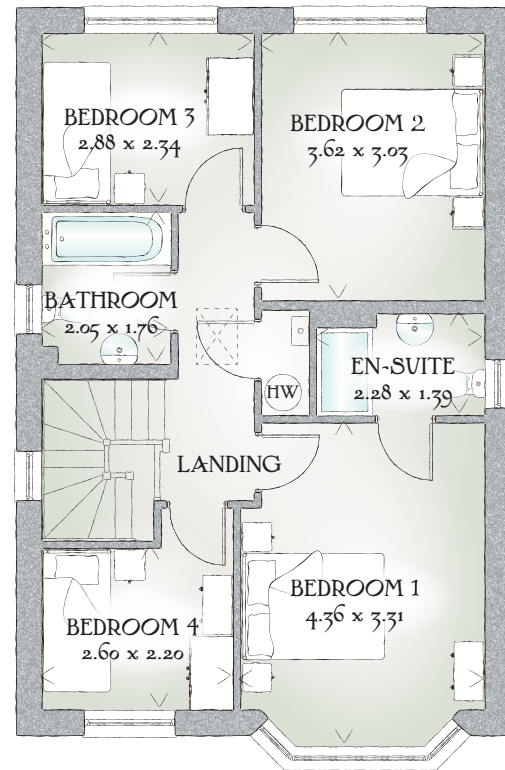
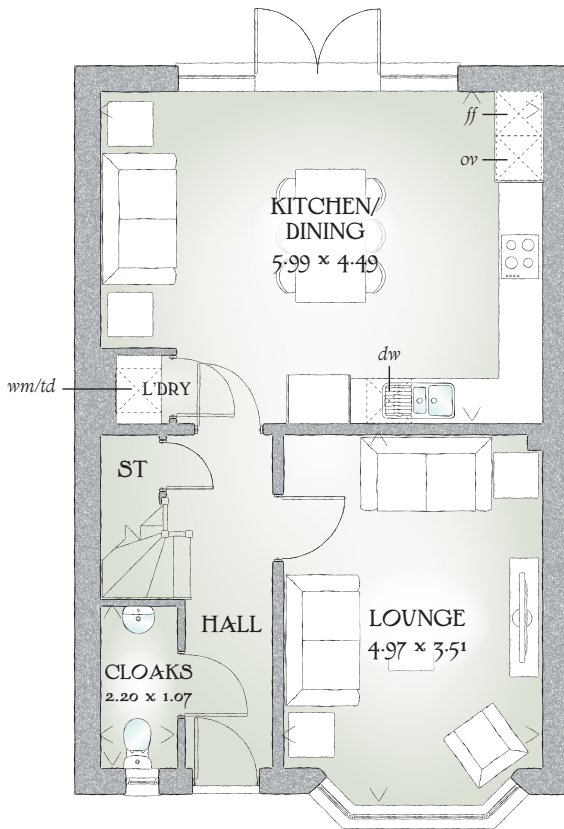


Stratford

FOUR BEDROOM HOME



 REDROW



FOUR BEDROOM HOME

Behind a frontage inspired by the Arts and Crafts movement, the Stratford provides the perfect setting for family life. The generous open plan kitchen/dining area is sure to be the hub of the home whilst the first floor offers four pleasingly sized bedrooms.

GROUND FLOOR

Kitchen/ Dining	19'8" x 14'9"	5.99 x 4.49 m
Lounge	16'4" x 11'6"	4.97 x 3.51 m
Cloaks	7'3" x 3'6"	2.20 x 1.07 m

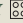
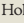


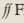
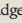

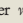
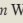
FIRST FLOOR

Bedroom 1	14'3" x 10'10"	4.36 x 3.31 m
En-suite	7'6" x 4'7"	2.28 x 1.39 m
Bedroom 2	11'11" x 9'11"	3.62 x 3.03 m
Bedroom 3	9'5" x 7'8"	2.88 x 2.34 m
Bedroom 4	8'6" x 7'3"	2.60 x 2.20 m
Bathroom	6'9" x 5'9"	2.05 x 1.76 m

CONSUMER CODE FOR HOME BUILDERS

www.consumercode.co.uk

Customers should note this illustration is an example of the Stratford house type. All dimensions indicated are approximate and the furniture layout is for illustrative purposes only. Homes may be 'handed' (mirror image) versions of the illustrations, and may be detached, semi-detached or terraced. Materials used may differ from plot to plot including render and roof tile colours. Detailed plans and specifications are available for inspection for each plot at our Sales Centre during working hours and customers must check their individual specifications prior to making a reservation.

KEY  Hob  Oven  Fridge/freezer  Washing machine space  Dishwasher space  Tumble dryer space  Hot water cylinder  ST Cupboard  Loft Hatch

< Denotes where dimensions are taken from. All wardrobes are subject to site specification. Please see Sales Consultant for further details.

Traditional homes, built the way you remember

 **REDROW**
A BETTER WAY TO LIVE