



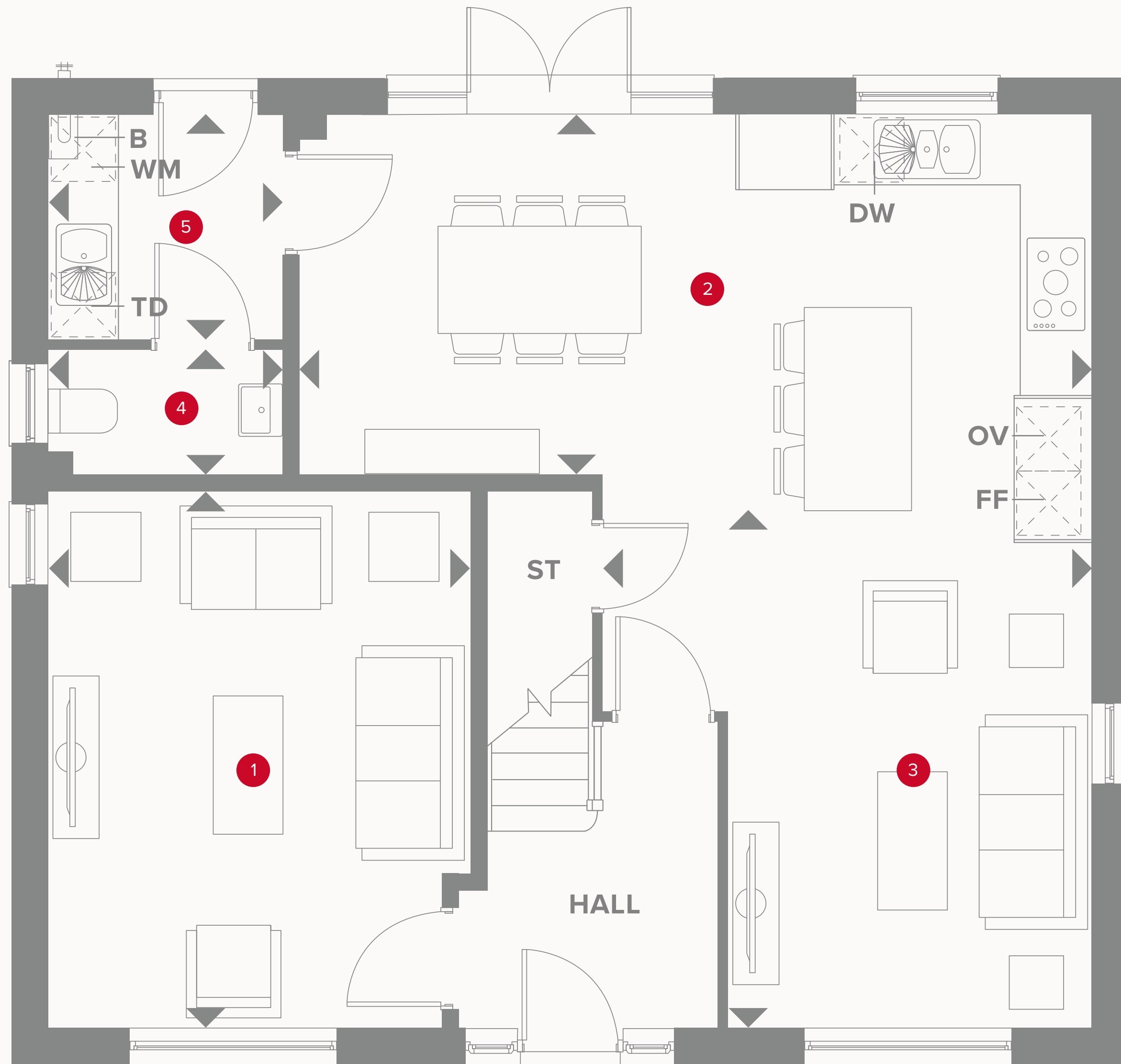
HERITAGE

- REDROW -

THE HARROGATE II

FOUR BEDROOM HOME

 **REDROW**





THE HARROGATE II GROUND FLOOR

1	Lounge	15'1" x 11'8"	4.6 x 3.6 m
2	Kitchen/Dining	22'9" x 10'4"	7.0 x 3.1 m
3	Family	15'1" x 13'1"	4.6 x 4.0 m
4	Cloaks	5'6" x 3'7"	1.7 x 1.1 m
5	Utility	6'2" x 5'10"	1.9 x 1.8 m

Corner plot only



KEY

-  Hob
- OV** Oven
- FF** Fridge/freezer
- TD** Tumble dryer space
-  Dimensions start

- ST** Storage cupboard
- WM** Washing machine space
- DW** Dish washer space
- B** Boiler



THE HARROGATE II FIRST FLOOR

6	Bedroom 1	12'1" x 10'2"	3.7 x 3.1 m
7	Wardrobe	6'6" x 6'2"	2.0 x 1.9 m
8	En-suite	8'2" x 5'6"	2.5 x 1.7 m
9	Bedroom 2	13'5" x 10'2"	4.1 x 3.1 m
10	Bedroom 3	12'1" x 10'2"	3.7 x 3.1 m
11	Bedroom 4	11'1" x 9'6"	3.4 x 2.9 m
12	Bathroom	7'6" x 5'10"	2.3 x 1.8 m



KEY

- ◀ Dimensions start
- OP Customer option
- HW Hot water storage

**CONSUMER
CODE FOR
HOME BUILDERS**
www.consumercode.co.uk

Customers should note this illustration is an example of the Harrogate house type. All dimensions indicated are approximate and the furniture layout is for illustrative purposes only. Homes may be 'handed' (mirror image) versions of the illustrations, and may be detached, semi-detached or terraced. Materials used may differ from plot to plot including render and roof tile colours. Detailed plans and specifications are available for inspection for each plot at our Sales Centre during working hours and customers must check their individual specifications prior to making a reservation.