



HERITAGE

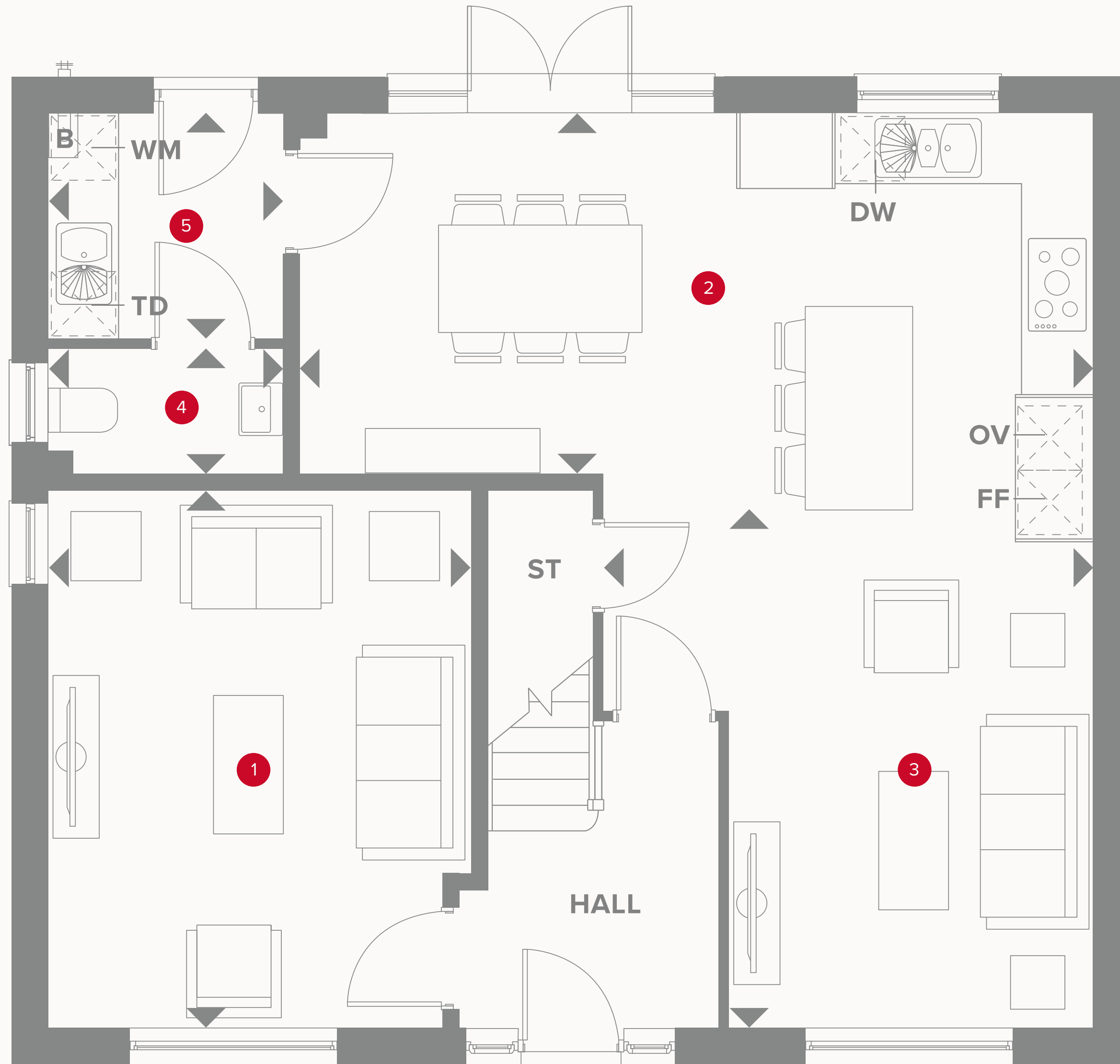
- REDROW -

THE HARROGATE

FOUR BEDROOM HOME




THE HARROGATE GROUND FLOOR




| | | | |
|---|----------------|---------------|-------------|
| 1 | Lounge | 15'1" x 11'8" | 4.6 x 3.6 m |
| 2 | Kitchen/Dining | 22'9" x 10'4" | 7.0 x 3.1 m |
| 3 | Family | 15'1" x 13'1" | 4.6 x 4.0 m |
| 4 | Cloaks | 5'6" x 3'7" | 1.7 x 1.1 m |
| 5 | Utility | 6'2" x 5'10" | 1.9 x 1.8 m |



KEY

 Hob
OV Oven
FF Fridge/freezer
TD Tumble dryer space

 Dimensions start
ST Storage cupboard
WM Washing machine space
DW Dish washer space

B Boiler



THE HARROGATE FIRST FLOOR

| | | | |
|----|-----------|---------------|-------------|
| 6 | Bedroom 1 | 12'1" x 10'2" | 3.7 x 3.1 m |
| 7 | Wardrobe | 6'6" x 6'2" | 2.0 x 1.9 m |
| 8 | En-suite | 8'2" x 5'6" | 2.5 x 1.7 m |
| 9 | Bedroom 2 | 13'5" x 10'2" | 4.1 x 3.1 m |
| 10 | Bedroom 3 | 12'1" x 10'2" | 3.7 x 3.1 m |
| 11 | Bedroom 4 | 11'1" x 9'6" | 3.4 x 2.9 m |
| 12 | Bathroom | 7'6" x 5'10" | 2.3 x 1.8 m |



KEY

- ◀ Dimensions start
- OP Customer option
- HW Hot water storage



Customers should note this illustration is an example of the Henley house type. All dimensions indicated are approximate and the furniture layout is for illustrative purposes only. Homes may be 'handed' (mirror image) versions of the illustrations, and may be detached, semi-detached or terraced. Materials used may differ from plot to plot including render and roof tile colours. Detailed plans and specifications are available for inspection for each plot at our Sales Centre during working hours and customers must check their individual specifications prior to making a reservation.