



HERITAGE

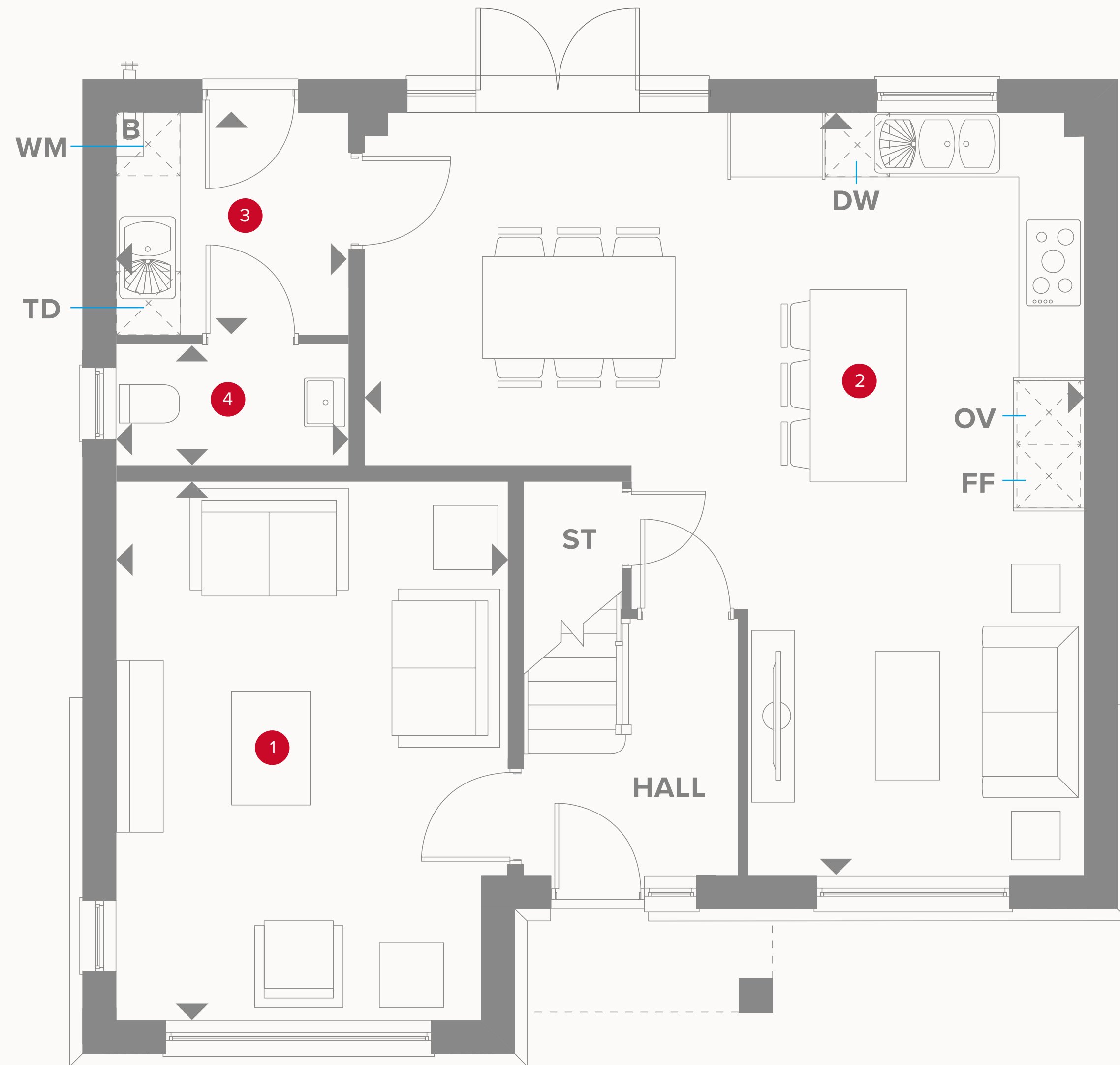
- REDROW -

THE HIGHGATE CORNER

FIVE BEDROOM HOME



THE HIGHGATE CORNER GROUND FLOOR



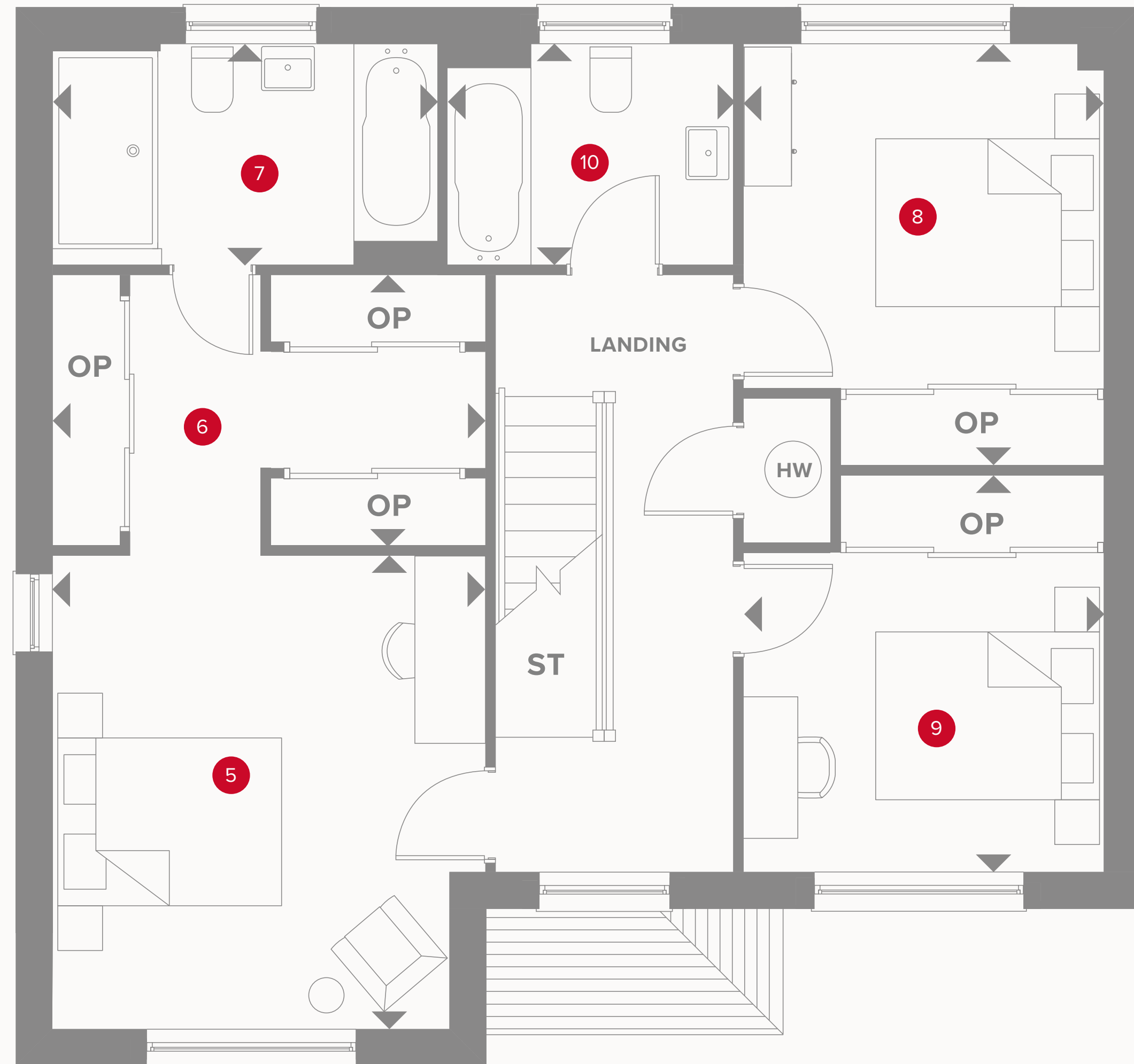
1	Lounge	16'4" x 11'8"	5.0 x 3.6 m
2	Kitchen/Dining/ Family	23'3" x 23'3"	7.1 x 7.1 m
3	Utility	6'10" x 5'10"	2.1 x 1.8 m
4	Cloaks	5'10" x 3'7"	1.8 x 1.1 m



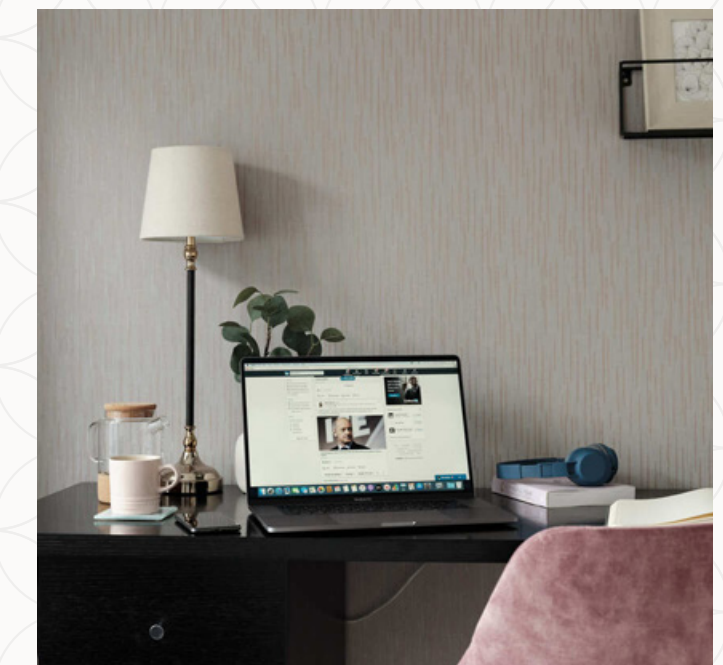
KEY

Hob	Dimensions start	Boiler
Oven	Storage cupboard	
Fridge/freezer	Washing machine space	
Tumble dryer space	Dish washer space	

THE HIGHGATE CORNER FIRST FLOOR



5	Bedroom 1	13'1" x 12'1"	4.0 x 3.7 m
6	Dressing	11'9" x 7'6"	3.6 x 2.3 m
7	En-suite	10'9" x 5'2"	3.3 x 1.9 m
8	Bedroom 2	11'9" x 10'2"	3.6 x 3.1 m
9	Bedroom 3	11'1" x 10'2"	3.4 x 3.1 m
10	Bathroom	7'10" x 6'2"	2.4 x 1.9 m



KEY

- ◀ Dimensions start
- OP** Customer option
- HW** Hot water storage
- ST** Storage cupboard

THE HIGHGATE CORNER SECOND FLOOR

11	Bedroom 4/Media room	14'5" x 12'1"	4.4 x 3.7 m
12	Bedroom 5	12'4" x 9'5"	4.1 x 3.8 m
13	Shower	8'8" x 4'3"	2.7 x 1.3 m



KEY

- ◀ Dimensions start
- ST Storage cupboard



Customers should note this illustration is an example of the Henley house type. All dimensions indicated are approximate and the furniture layout is for illustrative purposes only. Homes may be 'handed' (mirror image) versions of the illustrations, and may be detached, semi-detached or terraced. Materials used may differ from plot to plot including render and roof tile colours. Detailed plans and specifications are available for inspection for each plot at our Sales Centre during working hours and customers must check their individual specifications prior to making a reservation.

