



HERITAGE

- REDROW -

THE WARWICK

THREE BEDROOM DETACHED HOME





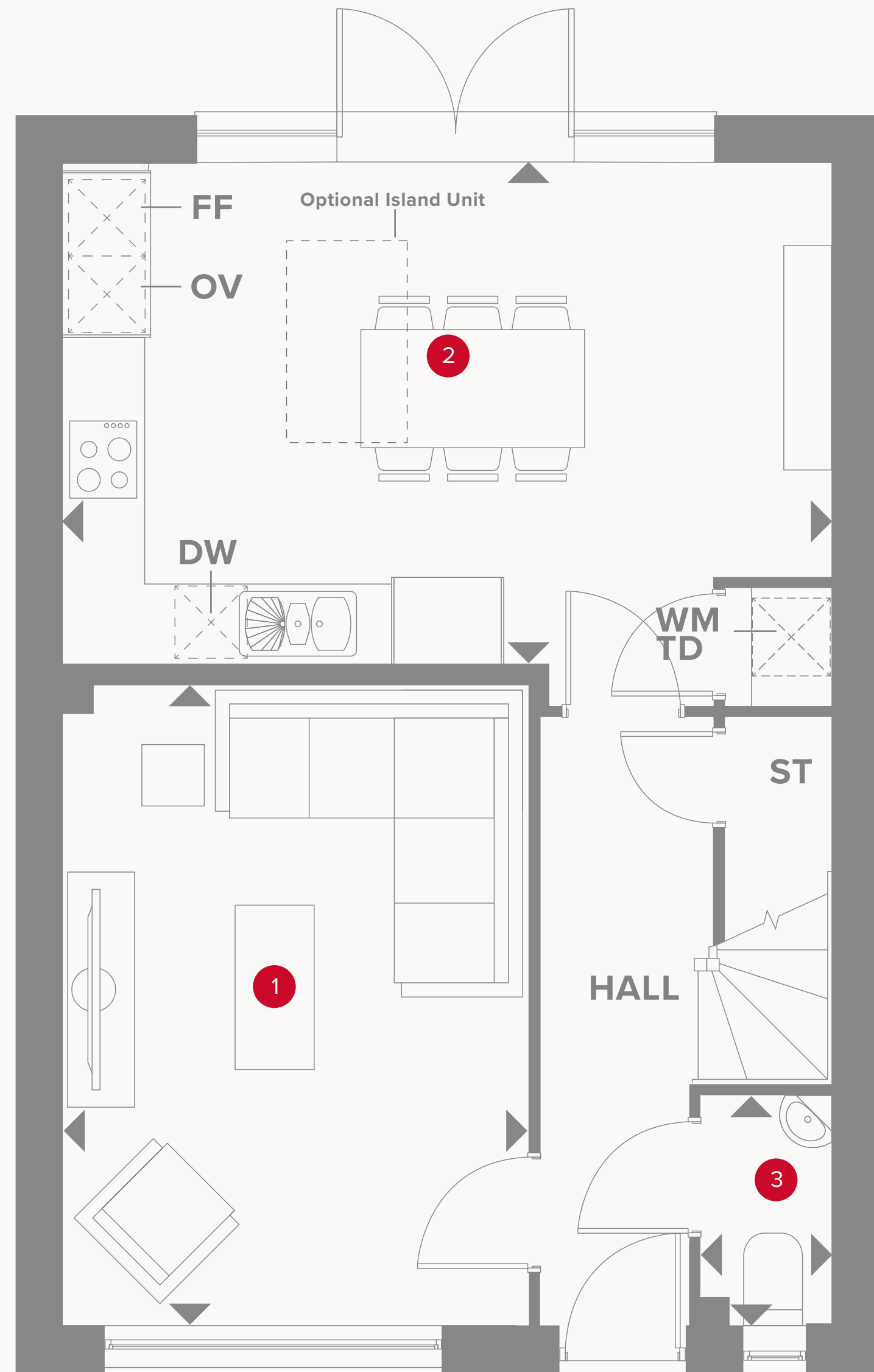
HERITAGE

- REDROW -

THE WARWICK

THREE BEDROOM DETACHED HOME

 **REDROW**





THE WARWICK GROUND FLOOR

1 Lounge	15'5" x 11'7"	4.71 x 3.52 m
2 Kitchen/ Dining	18'11" x 12'3"	5.77 x 3.73 m
3 Cloaks	5'7" x 3'3"	1.71 x 0.98 m

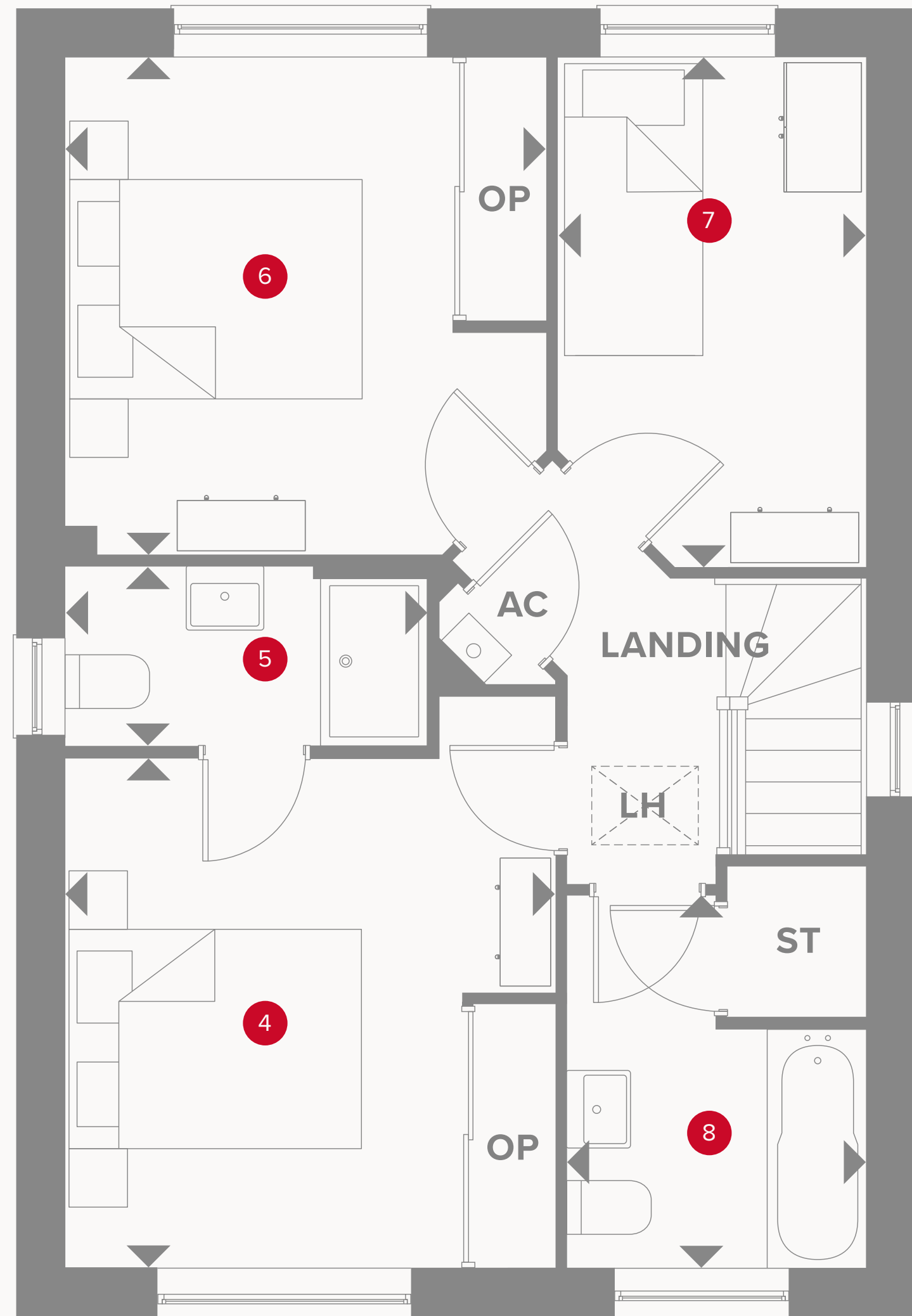


KEY

-  Hob
- OV** Oven
- FF** Fridge/freezer
- TD** Tumble dryer space

-  Dimensions start
- ST** Storage cupboard
- WM** Washing machine space
- DW** Dish washer space

*Please note there are variations to plots speak to our Sales Consultant for more information.



THE WARWICK FIRST FLOOR

4	Bedroom 1	11'11" x 11'8"	3.63 x 3.55 m
5	En-suite	8'8" x 4'2"	2.64 x 1.28 m
6	Bedroom 2	11'5" x 11'5"	3.49 x 3.49 m
7	Bedroom 3	11'9" x 7'2"	3.58 x 2.19 m
8	Bathroom	8'8" x 7'0"	2.65 x 2.13 m



Customers should note this illustration is an example of the Warwick house type. All dimensions indicated are approximate and the furniture layout is for illustrative purposes only. Homes may be 'handed' (mirror image) versions of the illustrations, and may be detached, semi-detached or terraced. Materials used may differ from plot to plot including render and roof tile colours. Detailed plans and specifications are available for inspection for each plot at our Customer Experience Suite or Sales Centre during working hours and customers must check their individual specifications prior to making a reservation. Please note that the specification show in this plan may include optional upgrades from standard specification. Please speak with your Sales Consultant or visit MyRedrow for more information.

KEY

- ◀ Dimensions start
- ST** Storage cupboard
- OP** Optional wardrobe
- AC** Airing cupboard
- LH** Loft hatch

*Please note there are variations to plots speak to our Sales Consultant for more information.