

# Loughor

THREE BEDROOM SEMI DETACHED HOME

---





# Loughor

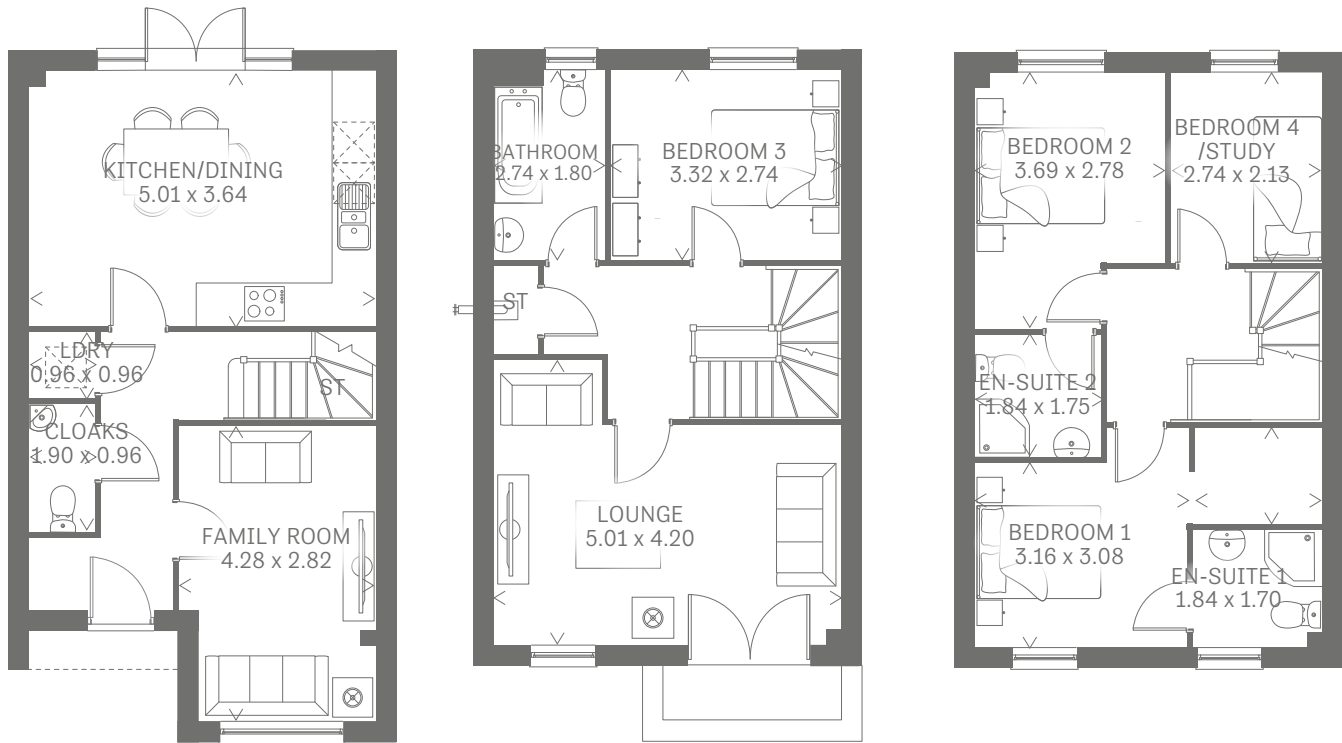
THREE BEDROOM SEMI DETACHED HOME

---





# Loughor



## Three Bedroom Home

The layout of the Loughor epitomises the modern townhouse lifestyle. A spacious ground floor is ideal for entertaining, whilst a separate lounge on the first floor is perfect for relaxing. An en suite to the master bedroom and two additional bedrooms creates a space for everyone to call their own.

### Ground Floor

Kitchen/ Dining	16'4" x 11'9"	5.01 x 3.64 m
Family Room	14'0" x 9'2"	4.28 x 2.82 m
Cloaks	6'2" x 3'1"	1.90 x 0.96 m
Laundry	3'1" x 3'1"	0.96 x 0.96 m

### First Floor

Lounge	16'4" x 13'8"	5.01 x 4.20 m
Bedroom 3	10'9" x 9'0"	3.32 x 2.74 m
Bathroom 1	9'0" x 5'2"	2.74 x 1.60 m

### Second Floor

Bedroom 1	16'4" x 10'4"	5.01 x 3.16 m
En-suite 1	6'0" x 5'6"	1.84 x 1.70 m
Bedroom 2	12'1" x 9'1"	3.69 x 2.78 m
En-suite 2	6'0" x 5'7"	1.84 x 1.75 m
Bedroom 4/ Study	9'0" x 7'0"	2.74 x 2.13 m

### CONSUMER CODE FOR HOME BUILDERS

[www.consumercode.co.uk](http://www.consumercode.co.uk)

Customers should note this illustration is an example of the Loughor house type. All dimensions indicated are approximate and furniture layout is for illustrative purposes only. Homes may be 'handed' (mirror image) versions of the illustrations, and may be detached, semi-detached or terraced. Materials used may differ from plot to plot including render and roof tile colours. Detailed plans and specifications are available for inspection for each plot at our Sales Centre during working hours and customers must check their individual specifications prior to making a reservation.

KEY Hob Oven Fridge/freezer Wm Washing machine space dw Dishwasher space td Tumble dryer Hot water cylinder ST Cupboard

Note: Bedroom dimensions taken into wardrobe recess. All wardrobes are subject to site specification. Please see Sales Consultant for further details.

Traditional homes, built the way you remember

