

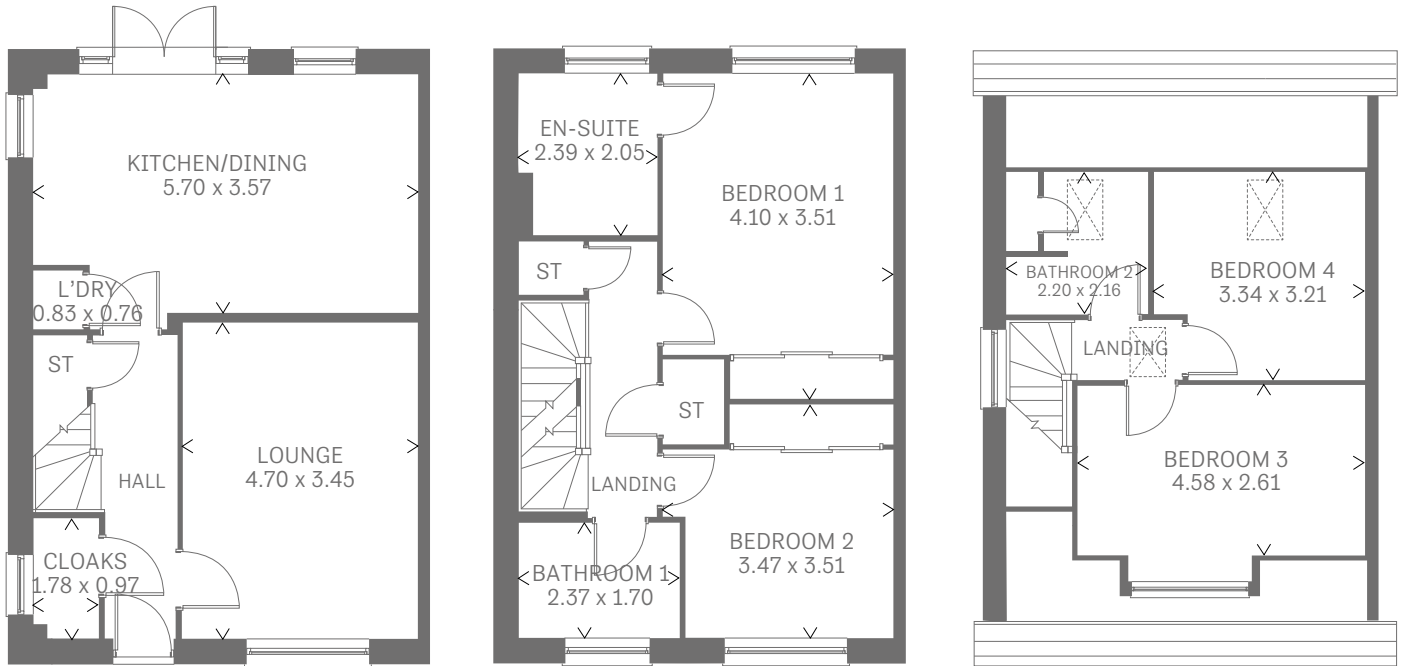
Rhymney

FOUR BEDROOM SEMI DETACHED HOME





Rhymney



Four Bedroom Home

A semi-detached four bedroom home, the Rhymney boasts a bright and open kitchen/dining area, ample storage space and the added benefit of an en-suite to the master bedroom.

Ground Floor

Kitchen/ Dining	18'8" x 11'9"	5.70 x 3.57 m
Lounge	15'5" x 11'3"	4.70 x 3.45 m
Cloaks	5'10" x 3'2"	1.78 x 0.97 m
Laundry	2'8" x 2'6"	0.83 x 0.76 m

First Floor

Bedroom 1	13'5" x 11'6"	4.10 x 3.51 m
En-suite	7'10" x 6'9"	2.39 x 2.05 m
Bedroom 2	11'3" x 11'6"	3.47 x 3.51 m
Bathroom 1	7'10" x 5'7"	2.37 x 1.70 m

Second Floor

Bedroom 3	15'0" x 8'6"	4.58 x 2.61 m
Bedroom 4	10'11" x 10'6"	3.34 x 3.21 m
Bathroom 2	7'2" x 7'1"	2.20 x 2.16 m

CONSUMER CODE FOR HOME BUILDERS

www.consumercode.co.uk

Customers should note this illustration is an example of the Rhymney house type. All dimensions indicated are approximate and furniture layout is for illustrative purposes only. Homes may be 'handed' (mirror image) versions of the illustrations, and may be detached, semi-detached or terraced. Materials used may differ from plot to plot including render and roof tile colours. Detailed plans and specifications are available for inspection for each plot at our Sales Centre during working hours and customers must check their individual specifications prior to making a reservation.

KEY Hob Oven Fridge/freezer Washing machine space Dishwasher space Tumble dryer space Hot water cylinder ST Cupboard

Note: Bedroom dimensions taken into wardrobe recess. All wardrobes are subject to site specification. Please see Sales Consultant for further details.

Traditional homes, built the way you remember

REDROW
A BETTER WAY TO LIVE