



Warwick

THREE BEDROOM HOME



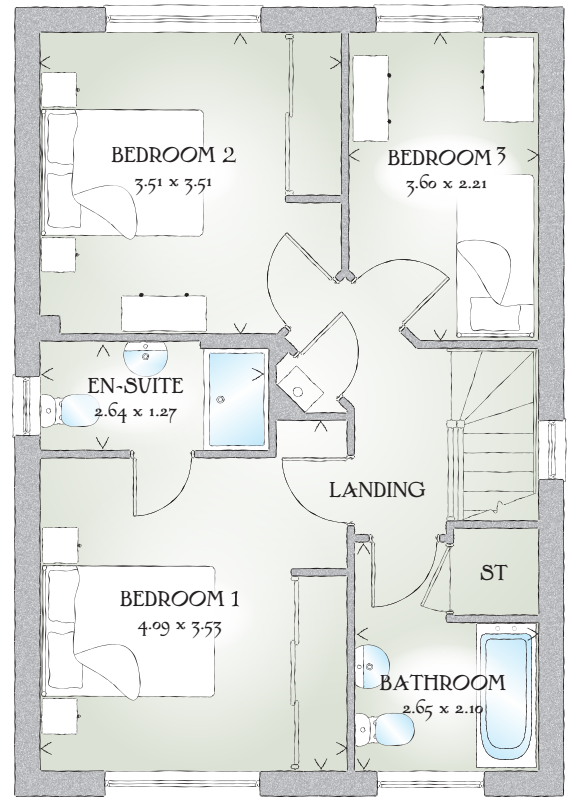
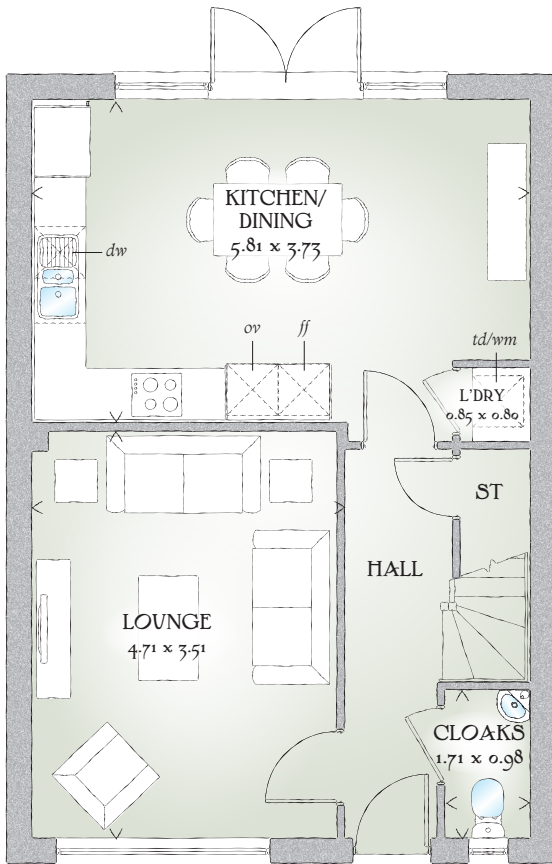
 REDROW



Warwick

THREE BEDROOM HOME





1080 SQ FT | THREE BEDROOM HOME

A sense of quality and craftsmanship is evident throughout this home. With a well designed kitchen/diner, a comfortable lounge and three spacious bedrooms, the Warwick will continue to please.

GROUND FLOOR

Lounge	15'5" x 11'6"	4.71 x 3.51 m
Kitchen/ Dining	17'0" x 12'3"	5.81 x 3.73 m
Cloaks	5'7" x 3'3"	1.71 x 0.98 m
Laundry	2'9" x 2'7"	0.85 x 0.80 m

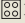
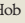
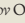
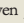
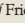

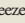

FIRST FLOOR

Bedroom 1	13'5" x 11'7"	4.09 x 3.53 m
En-suite	8'8" x 4'2"	2.64 x 1.27 m
Bedroom 2	11'6" x 11'6"	3.51 x 3.51 m
Bedroom 3	11'10" x 7'3"	3.60 x 2.21 m
Bathroom	8'8" x 6'11"	2.65 x 2.10 m

CONSUMER CODE FOR HOME BUILDERS

www.consumercode.co.uk

Customers should note this illustration is an example of the Warwick house type. All dimensions indicated are approximate and furniture layout is for illustrative purposes only. Homes may be 'handed' (mirror image) versions of the illustrations, and may be detached, semi-detached or terraced. Materials used may differ from plot to plot including render and roof tile colours. Detailed plans and specifications are available for inspection for each plot at our Sales Centre during working hours and customers must check their individual specifications prior to making a reservation.

KEY  Hob  Oven  Fridge/freezer  Washing machine space  Dishwasher space  Tumble dryer space  Hot water cylinder  ST Cupboard

< Denotes where dimensions are taken from. All wardrobes are subject to site specification. Please see Sales Consultant for further details.

Traditional homes, built the way you remember

 **REDROW**
A BETTER WAY TO LIVE