

FRENCHAY PARK



The Kirkham

Four Bedroom Home



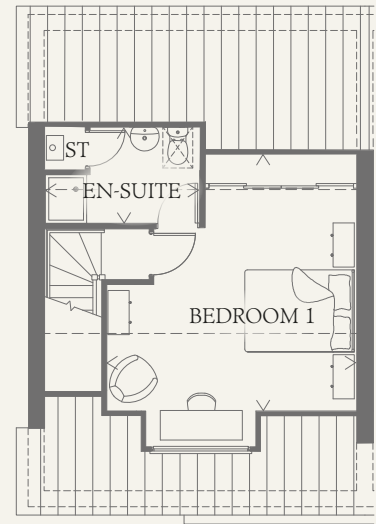
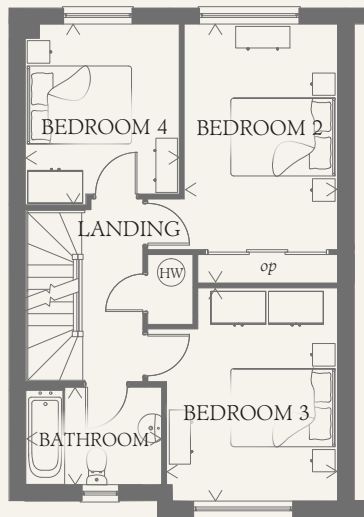
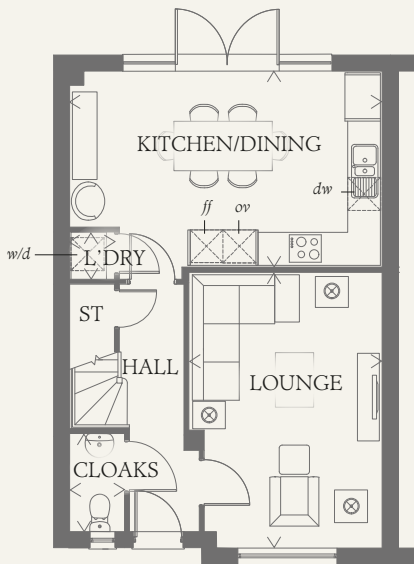


FRENCHAY PARK

The Kirkham

Four Bedroom Home

This understated exterior offers a spacious Kitchen/Dining area perfect for entertaining, three good sized bedrooms on the first floor, and a large Master Bedroom suite on the second floor.



GROUND FLOOR

LOUNGE	16'8" x 11'7"	5.07 x 3.52 m
KITCHEN/DINING	18'9" x 11'9"	5.71 x 3.58 m
CLOAKS	5'11" x 3'3"	1.81 x 1.00 m
LAUNDRY	2'10" x 2'8"	0.87 x 0.82 m

FIRST FLOOR

BEDROOM 2	15'6" x 9'2"	4.73 x 2.79 m
BEDROOM 3	12'11" x 10'3"	3.93 x 3.13 m
BEDROOM 4	10'10" x 9'3"	3.30 x 2.83 m
BATHROOM	8'2" x 5'11"	2.49 x 1.81 m

SECOND FLOOR

BEDROOM 1	17'0" x 14'11"	5.20 x 4.57 m
EN-SUITE	9'4" x 5'9"	2.84 x 1.76 m

**CONSUMER
CODE FOR
HOME BUILDERS**

www.consumercode.co.uk

Customers should note this illustration is an example of the Kirkham house type. All dimensions indicated are approximate and the furniture layout is for illustrative purposes only. Homes may be 'handed' (mirror image) versions of the illustrations, and may be detached, semi-detached or terraced. Materials used may differ from plot to plot including render and roof tile colours. Detailed plans and specifications are available for inspection for each plot at our Sales Centre during working hours and customers must check their individual specifications prior to making a reservation.

KEY

Hob
 Oven
 Fridge/freezer
 Washer/dryer space
 Dishwasher space

Hot water cylinder
 Cupboard
 Optional wardrobe

< Denotes where dimensions are taken from. All wardrobes are subject to site specification. Please see Sales Consultant for further details.

0355-01 THE KIRKHAM_RV