

FRENCHAY PARK



The Knowlton

Four Bedroom Home



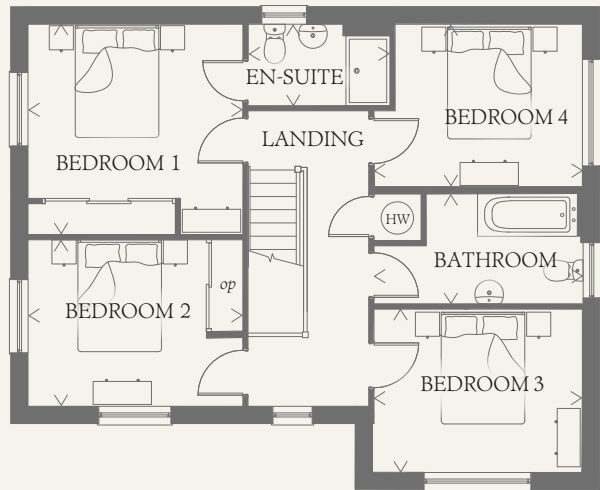
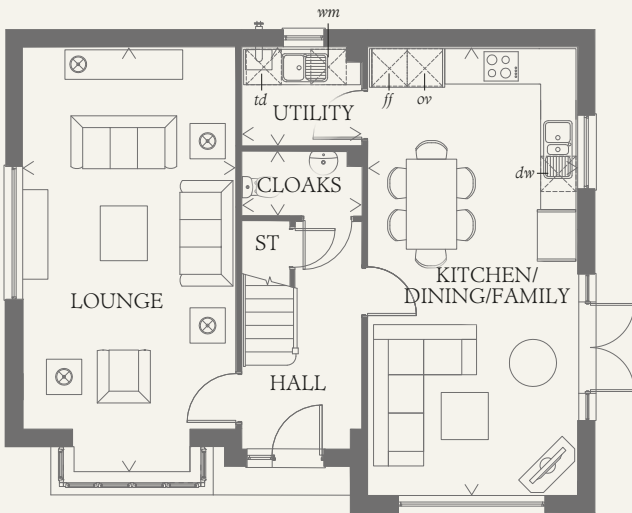


FRENCHAY PARK

The Knowlton

Four Bedroom Home

The Knowlton is every bit of what the Frenchay Park stands for with luxury throughout whilst maintaining ample living accommodation, perfect for the dynamics of a modern day family.



GROUND FLOOR

LOUNGE	23'9" x 11'10"	7.25 x 3.61 m
KITCHEN/ DINING/ FAMILY	25'0" x 11'8"	7.62 x 3.57 m
CLOAKS	6'3" x 3'7"	1.91 x 1.10 m
UTILITY	6'6" x 5'6"	1.99 x 1.68 m

FIRST FLOOR

BEDROOM 1	12'0" x 9'9"	3.65 x 2.96 m
EN-SUITE	7'11" x 4'8"	2.41 x 1.42 m
BEDROOM 2	9'8" x 9'3"	2.96 x 2.83 m
BEDROOM 3	11'8" x 9'0"	3.57 x 2.74 m
BEDROOM 4	10'5" x 9'1"	3.18 x 2.78 m
BATHROOM	11'7" x 6'4"	3.54 x 1.92 m

**CONSUMER
CODE FOR
HOME BUILDERS**

www.consumercode.co.uk

Customers should note this illustration is an example of the Knowlton house type. All dimensions indicated are approximate and the furniture layout is for illustrative purposes only. Homes may be 'handed' (mirror image) versions of the illustrations, and may be detached, semi-detached or terraced. Materials used may differ from plot to plot including render and roof tile colours. Detailed plans and specifications are available for inspection for each plot at our Sales Centre during working hours and customers must check their individual specifications prior to making a reservation.

KEY

Hob	Dishwasher space
Oven	Hot water cylinder
Fridge/freezer	Cupboard
Washer machine	Optional wardrobe
Tumble dryer	

< Denotes where dimensions are taken from. All wardrobes are subject to site specification. Please see Sales Consultant for further details.

03553-01 THE KNOWLTON_RV