



FRENCHAY PARK



The Bakewell

Three Bedroom Home



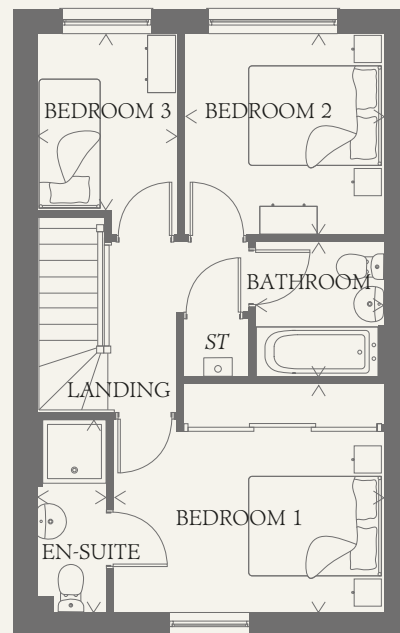
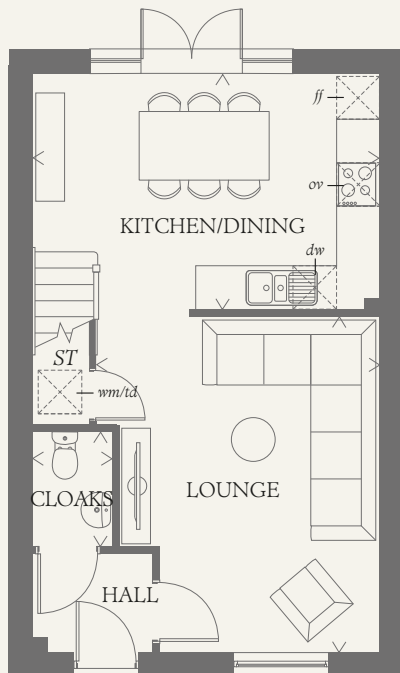


FRENCHAY PARK

The Bakewell

Three Bedroom Home

With a spacious lounge and separate kitchen/dining room this home has the potential to grow and evolve with the changes to your family life.



GROUND FLOOR

LOUNGE	15'3" x 12'9"	4.66 x 3.91 m
KITCHEN/ DINING	15'8" x 10'7"	4.80 x 3.25 m
CLOAKS	5'2" x 3'7"	1.59 x 1.10 m

FIRST FLOOR

BEDROOM 1	12'3" x 10'4"	3.74 x 3.15 m
EN-SUITE	8'8" x 3'1"	2.66 x 0.96 m
BEDROOM 2	9'1" x 8'8"	2.78 x 2.66 m
BEDROOM 3	8'0" x 6'4"	2.45 x 1.95 m
BATHROOM	6'1" x 5'9"	1.86 x 1.77 m

**CONSUMER
CODE FOR
HOME BUILDERS**

www.consumercode.co.uk

Customers should note this illustration is an example of the Bakewell house type. All dimensions indicated are approximate and the furniture layout is for illustrative purposes only. Homes may be 'handed' (mirror image) versions of the illustrations, and may be detached, semi-detached or terraced. Materials used may differ from plot to plot including render and roof tile colours. Detailed plans and specifications are available for inspection for each plot at our Sales Centre during working hours and customers must check their individual specifications prior to making a reservation.

KEY

Hob	<i>td</i> Tumble dryer space
<i>ov</i> Oven	<i>ST</i> Cupboard
<i>ff</i> Fridge/freezer	
<i>wm</i> Washing machine space	
<i>dw</i> Dishwasher space	

< Denotes where dimensions are taken from. All wardrobes are subject to site specification. Please see Sales Consultant for further details.

AF 248530_EF_BAKE_MM.1