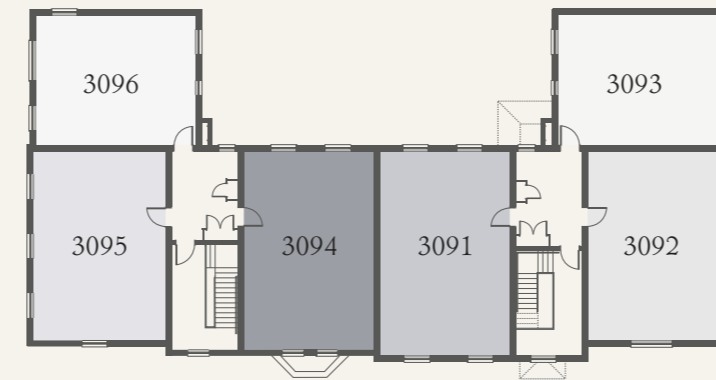
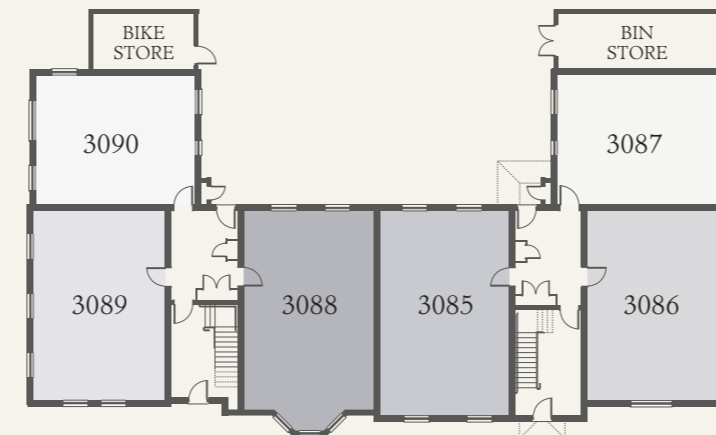


Type 6 (Plot 3094)

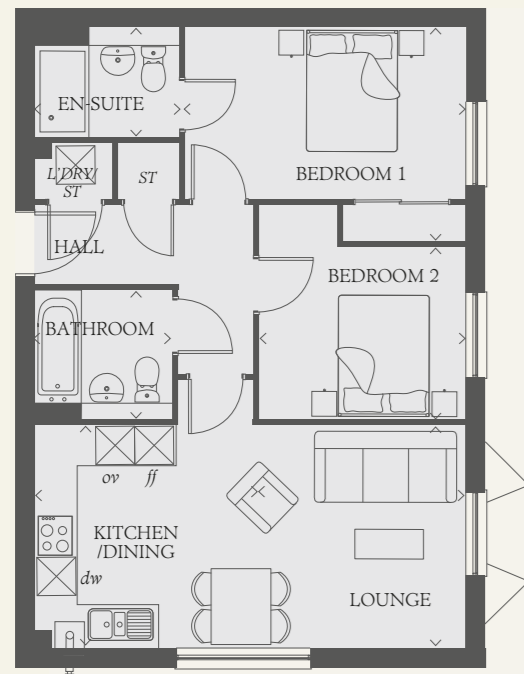
KITCHEN/ DINING	14'7" x 10'6"	4.45 x 3.22 m
LOUNGE	14'7" x 10'6"	4.45 x 3.22 m
BEDROOM 1	12'4" x 10'11"	3.78 x 3.35 m
EN-SUITE	7'6" x 4'9"	2.29 x 1.46 m
BEDROOM 2	9'10" x 8'6"	3.00 x 2.60 m
BATHROOM	6'9" x 6'5"	2.08 x 1.97 m



FIRST FLOOR



GROUND FLOOR



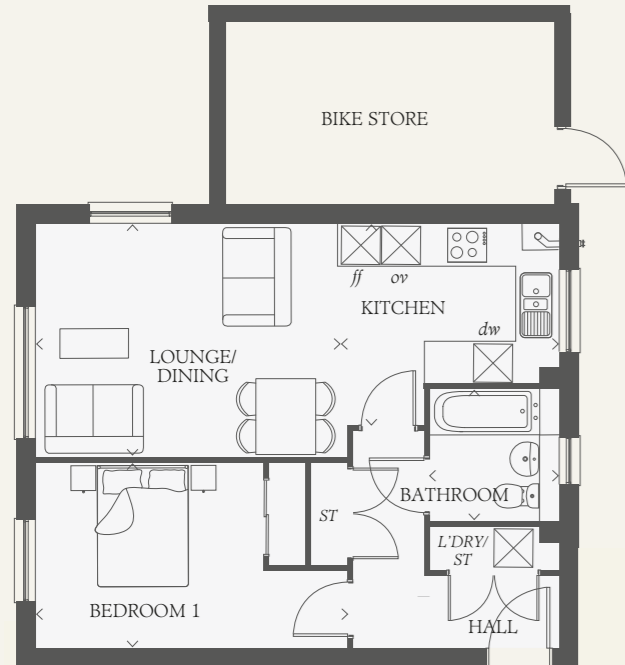
Type 2 (Plot 3092)

KITCHEN/ DINING	11'1" x 10'9"	3.38 x 3.30 m
LOUNGE	11'1" x 10'7"	3.38 x 3.25 m
BEDROOM 1	13'11" x 8'5"	4.26 x 2.59 m
EN-SUITE	7'1" x 5'5"	2.18 x 1.66 m
BEDROOM 2	10'3" x 8'7"	3.13 x 2.62 m
BATHROOM	6'9" x 6'5"	2.08 x 1.98 m



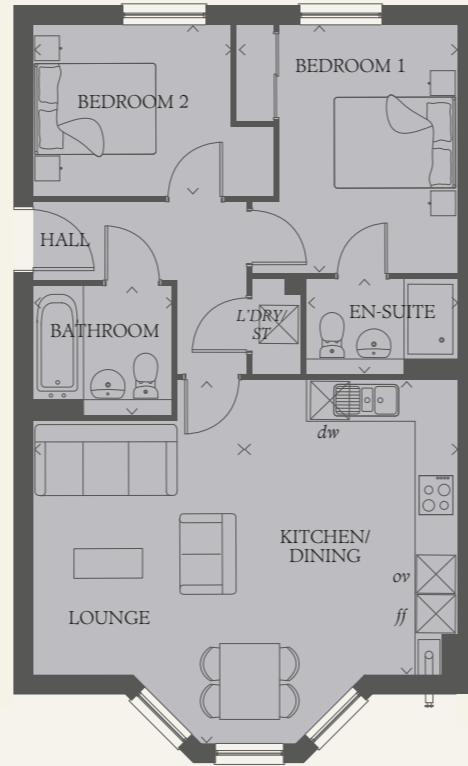
Apartment Block 2

One & Two Bedroom Apartments



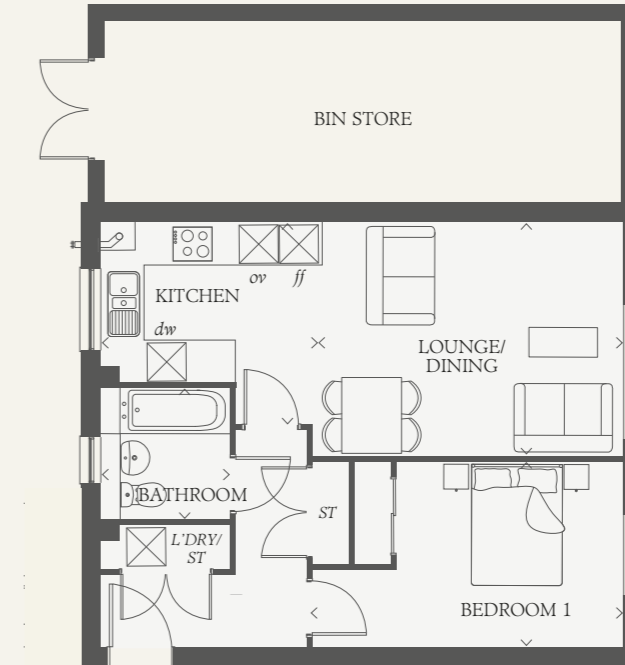
Type 1 (Plots 3090 & 3096)

LOUNGE/ DINING	15'2" x 11'6"	4.63 x 3.52 m
KITCHEN	10'9" x 10'0"	3.29 x 3.05 m
BEDROOM 1	15'7" x 9'1"	4.75 x 2.79 m
BATHROOM	6'7" x 6'4"	2.20 x 1.94 m



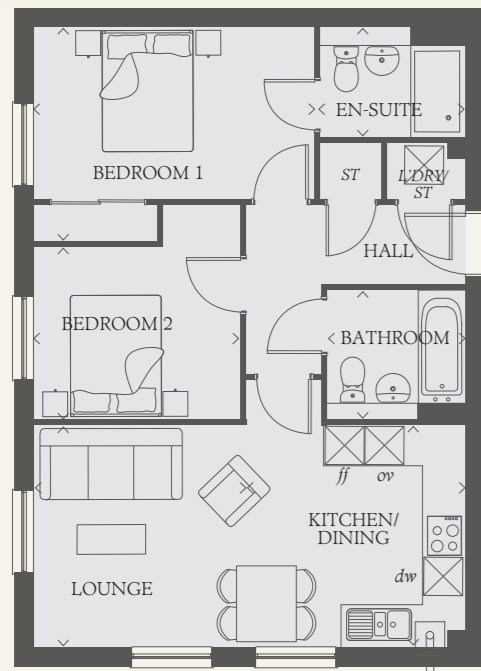
Type 5 (Plot 3088)

KITCHEN/ DINING	14'7" x 10'6"	4.45 x 3.22 m
LOUNGE	18'1" x 10'6"	5.52 x 3.22 m
BEDROOM 1	12'4" x 10'11"	3.78 x 3.35 m
EN-SUITE	7'6" x 4'9"	2.29 x 1.46 m
BEDROOM 2	9'10" x 8'6"	3.00 x 2.60 m
BATHROOM	6'9" x 6'5"	2.08 x 1.97 m



Type 1 (Plot 3087)

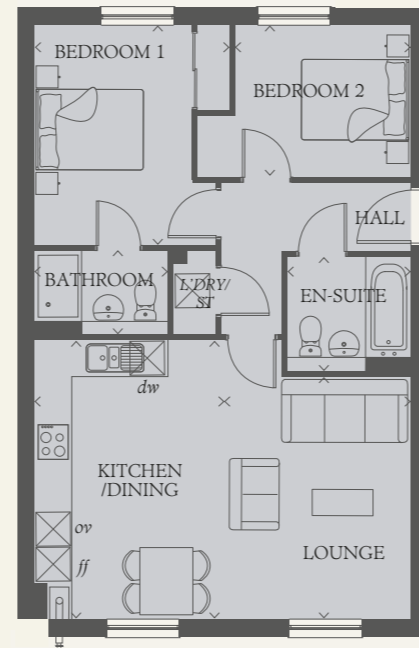
LOUNGE/ DINING	15'2" x 11'6"	4.63 x 3.52 m
KITCHEN	10'9" x 10'0"	3.29 x 3.05 m
BEDROOM 1	15'7" x 9'1"	4.75 x 2.79 m
BATHROOM	6'7" x 6'4"	2.20 x 1.94 m



Type 2 (Plots 3089 & 3095*)

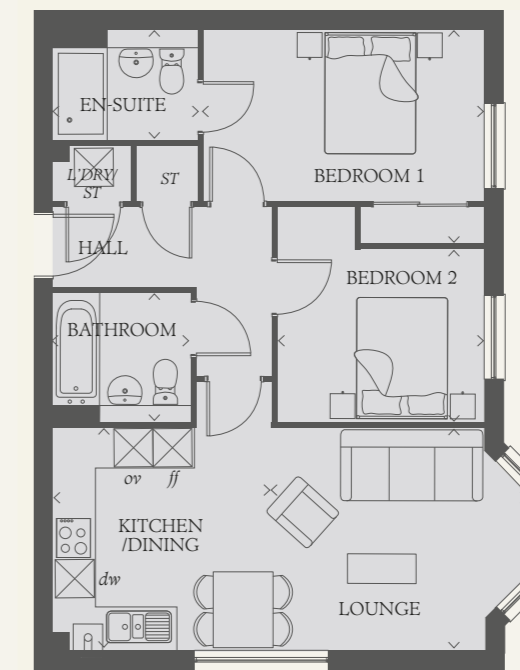
KITCHEN/ DINING	11'1" x 10'9"	3.38 x 3.30 m
LOUNGE	11'1" x 10'7"	3.38 x 3.25 m
BEDROOM 1	13'11" x 8'5"	4.26 x 2.59 m
EN-SUITE	7'1" x 5'5"	2.18 x 1.66 m
BEDROOM 2	10'3" x 8'7"	3.13 x 2.62 m
BATHROOM	6'9" x 6'5"	2.08 x 1.98 m

*Plot 3095 Window variation



Type 4 (Plots 3085 & 3091)

KITCHEN/ DINING	15'7" x 10'6"	4.76 x 3.22 m
LOUNGE	13'6" x 10'4"	4.14 x 3.22 m
BEDROOM 1	12'4" x 10'11"	3.78 x 3.35 m
EN-SUITE	7'6" x 4'9"	2.29 x 1.46 m
BEDROOM 2	9'10" x 8'6"	3.00 x 2.60 m
BATHROOM	6'9" x 6'5"	2.08 x 1.97 m



Type 3 (Plot 3086)

LOUNGE/ DINING	12'5" x 11'1"	3.80 x 3.38 m
KITCHEN	11'1" x 11'1"	3.40 x 3.38 m
BEDROOM 1	13'11" x 8'5"	4.26 x 2.59 m
EN-SUITE	7'1" x 5'5"	2.18 x 1.66 m
BEDROOM 2	10'3" x 8'7"	3.13 x 2.62 m
BATHROOM	6'9" x 6'5"	2.08 x 1.98 m