



FRENCHAY PARK



The Buxton

Two Bedroom Home



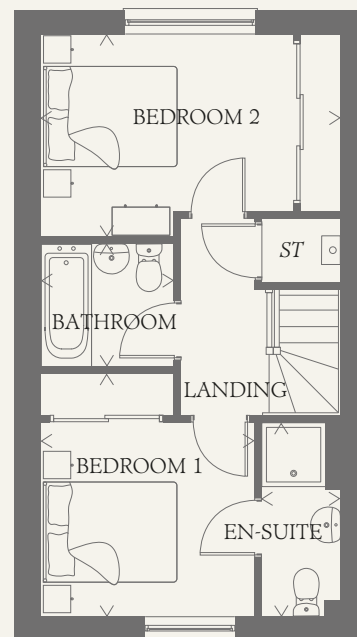
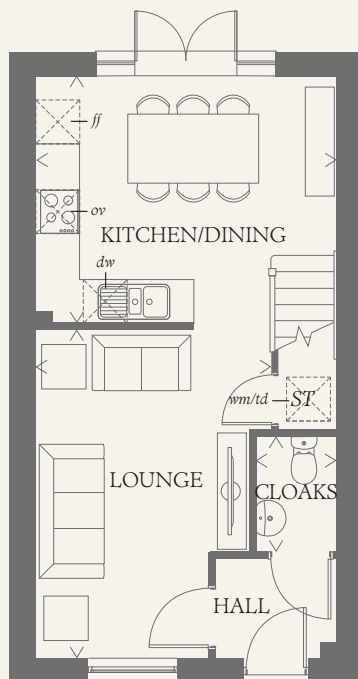


FRENCHAY PARK

The Buxton

Two Bedroom Home

Well designed and stylish, the Buxton is a generous two bedroom home combining quality and space to create a home that will stand the test of time. This unique living space has been lovingly crafted to the highest standards, boasting a distinct attention to detail which guarantees both luxury and comfort.



GROUND FLOOR

LOUNGE	14'9" x 10'6"	4.51 x 3.22 m
KITCHEN/ DINING	13'6" x 11'1"	4.12 x 3.40 m
CLOAKS	5'2" x 3'6"	1.59 x 1.09 m

FIRST FLOOR

BEDROOM 1	10'11" x 9'7"	3.30 x 2.93 m
EN-SUITE	8'8" x 3'6"	2.66 x 1.09 m
BEDROOM 2	13'6" x 9'1"	4.12 x 2.79 m
BATHROOM	5'11" x 5'6"	1.82 x 1.69 m

**CONSUMER
CODE FOR
HOME BUILDERS**

www.consumercode.co.uk

Customers should note this illustration is an example of the Buxton house type. All dimensions indicated are approximate and the furniture layout is for illustrative purposes only. Homes may be 'handed' (mirror image) versions of the illustrations, and may be detached, semi-detached or terraced. Materials used may differ from plot to plot including render and roof tile colours. Detailed plans and specifications are available for inspection for each plot at our Sales Centre during working hours and customers must check their individual specifications prior to making a reservation.

KEY

Hob	<i>td</i> Tumble dryer space
<i>ov</i> Oven	<i>ST</i> Cupboard
<i>ff</i> Fridge/freezer	
<i>wm</i> Washing machine space	
<i>dw</i> Dishwasher space	

< Denotes where dimensions are taken from. All wardrobes are subject to site specification. Please see Sales Consultant for further details.

AF 248530. EF_BUXT_MM.1