



FRENCHAY PARK



# The Lincoln

*Four Bedroom Home*



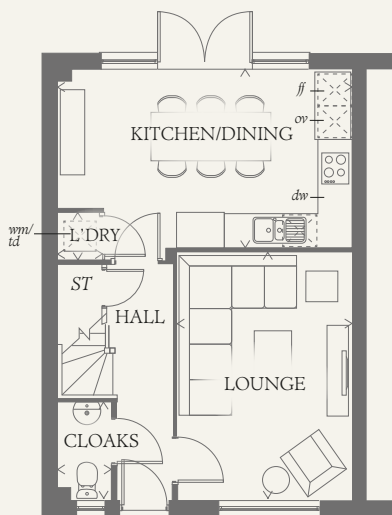


FRENCHAY PARK

# The Lincoln

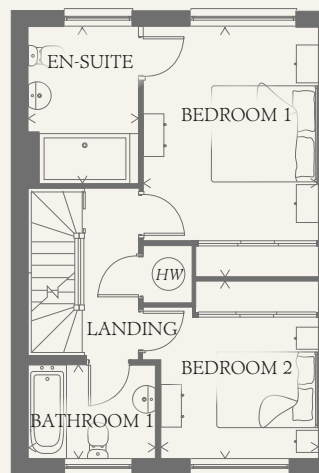
Four Bedroom Home

The Lincoln is a wonderfully versatile home with space to spare across three floors, to give you and your family complete flexibility to live the way you want to. Finished to the very highest standards, it includes a bathroom on every level, plus an en-suite to the master bedroom.



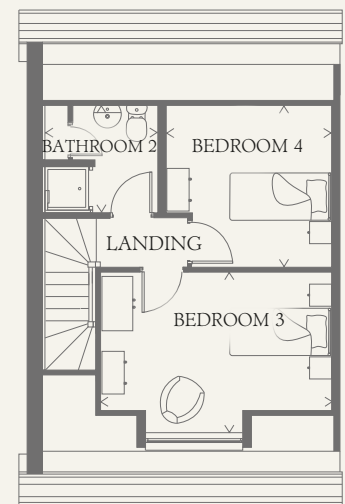
## GROUND FLOOR

KITCHEN/ DINING	17'9" x 10'10"	5.42 x 3.10 m
LOUNGE	14'10" x 10'6"	4.54 x 3.21 m
CLOAKS	5'9" x 3'1"	1.77 x 0.96 m
LAUNDRY	2'9" x 2'5"	0.85 x 0.74 m



## FIRST FLOOR

BEDROOM 1	13'0" x 10'9"	3.98 x 3.28 m
EN-SUITE	9'6" x 6'8"	2.92 x 2.04 m
BEDROOM 2	10'8" x 9'8"	3.26 x 2.96 m
BATHROOM 1	7'8" x 5'6"	2.36 x 1.68 m



## SECOND FLOOR

BEDROOM 3	14'2" x 9'10"	4.32 x 3.02 m
BEDROOM 4	10'2" x 9'11"	3.10 x 3.03 m
BATHROOM 2	7'0" x 6'7"	2.14 x 2.01 m

**CONSUMER  
CODE FOR  
HOME BUILDERS**

[www.consumercode.co.uk](http://www.consumercode.co.uk)

Customers should note this illustration is an example of the Lincoln house type. All dimensions indicated are approximate and the furniture layout is for illustrative purposes only. Homes may be 'handed' (mirror image) versions of the illustrations, and may be detached, semi-detached or terraced. Materials used may differ from plot to plot including render and roof tile colours. Detailed plans and specifications are available for inspection for each plot at our Sales Centre during working hours and customers must check their individual specifications prior to making a reservation.

### KEY

Hob	Tumble dryer space
Oven	Hot water cylinder
Fridge/freezer	Cupboard
Washing machine space	
Dishwasher space	

< Denotes where dimensions are taken from. All wardrobes are subject to site specification. Please see Sales Consultant for further details.

AF 248530. EF\_LINC\_SM.2