



FRENCHAY GARDENS



The Moreton V1

Three Bedroom Home



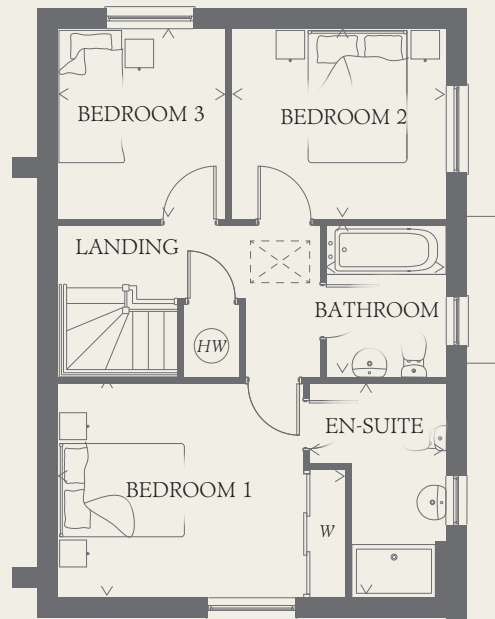
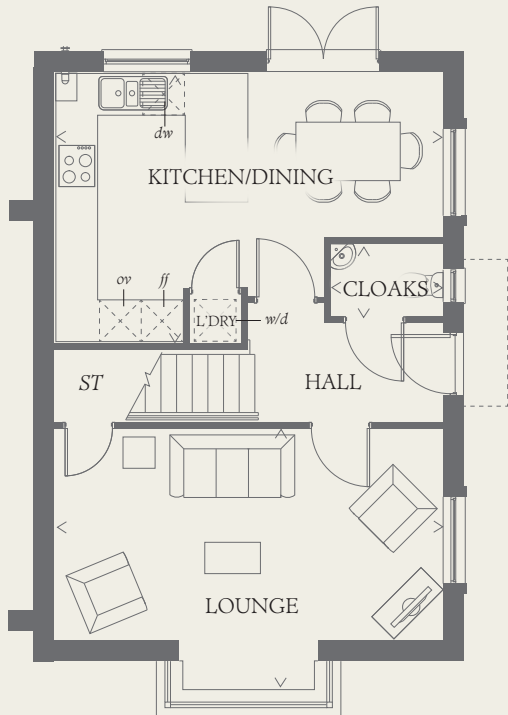


FRENCHAY GARDENS

The Moreton V1

Three Bedroom Home

This home has extensive living space including a bay window to the lounge and superb use of space throughout. The Moreton v1 benefits from luxurious finish touches, this family home has something to fulfil everyone's desires.



GROUND FLOOR

LOUNGE	18'2" x 12'3"	5.54 x 3.74 m
KITCHEN/ DINING	18'2" x 12'8"	5.54 x 3.85 m
CLOAKS	5'3" x 3'5"	1.60 x 1.05 m
LAUNDRY	2'5" x 2'3"	0.74 x 0.68 m

FIRST FLOOR

BEDROOM 1	13'7" x 10'0"	4.13 x 3.05 m
EN-SUITE	10'0" x 6'4"	3.05 x 1.92 m
BEDROOM 2	10'0" x 8'11"	3.05 x 2.71 m
BEDROOM 3	8'11" x 7'10"	2.71 x 2.39 m
BATHROOM	7'2" x 5'7"	2.18 x 1.69 m

CONSUMER CODE FOR HOME BUILDERS

www.consumercode.co.uk

Customers should note this illustration is an example of the Moreton v1 house type. All dimensions indicated are approximate and the furniture layout is for illustrative purposes only. Homes may be 'handed' (mirror image) versions of the illustrations, and may be detached, semi-detached or terraced. Materials used may differ from plot to plot including render and roof tile colours. Detailed plans and specifications are available for inspection for each plot at our Sales Centre during working hours and customers must check their individual specifications prior to making a reservation.

KEY

Hob	Hot water cylinder
Oven	Cupboard
Fridge/freezer	Wardrobe
Washer/dryer space	
Dishwasher space	

< Denotes where dimensions are taken from. All wardrobes are subject to site specification. Please see Sales Consultant for further details.

AF 180387_EF_MORETON V1 RVT 1