



**HERITAGE**

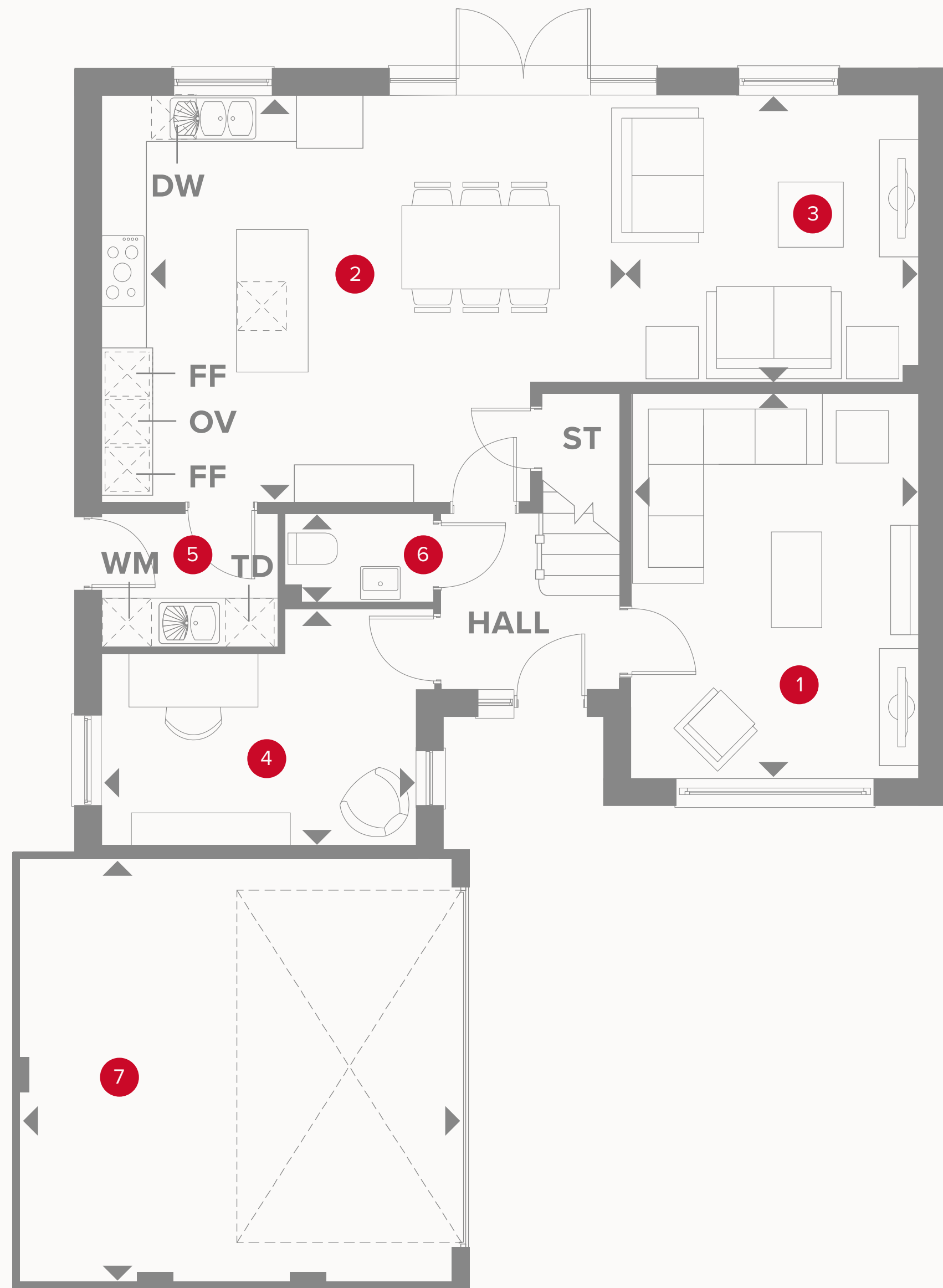
- REDROW -

# THE LEDSHAM

FOUR BEDROOM HOME

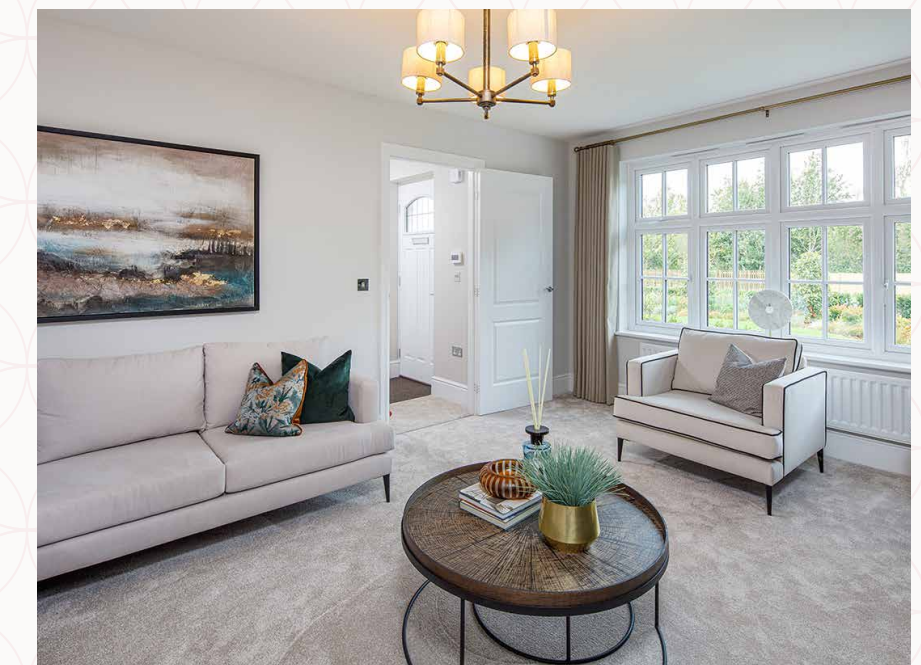
 **REDROW**






# THE LEDSHAM GROUND FLOOR

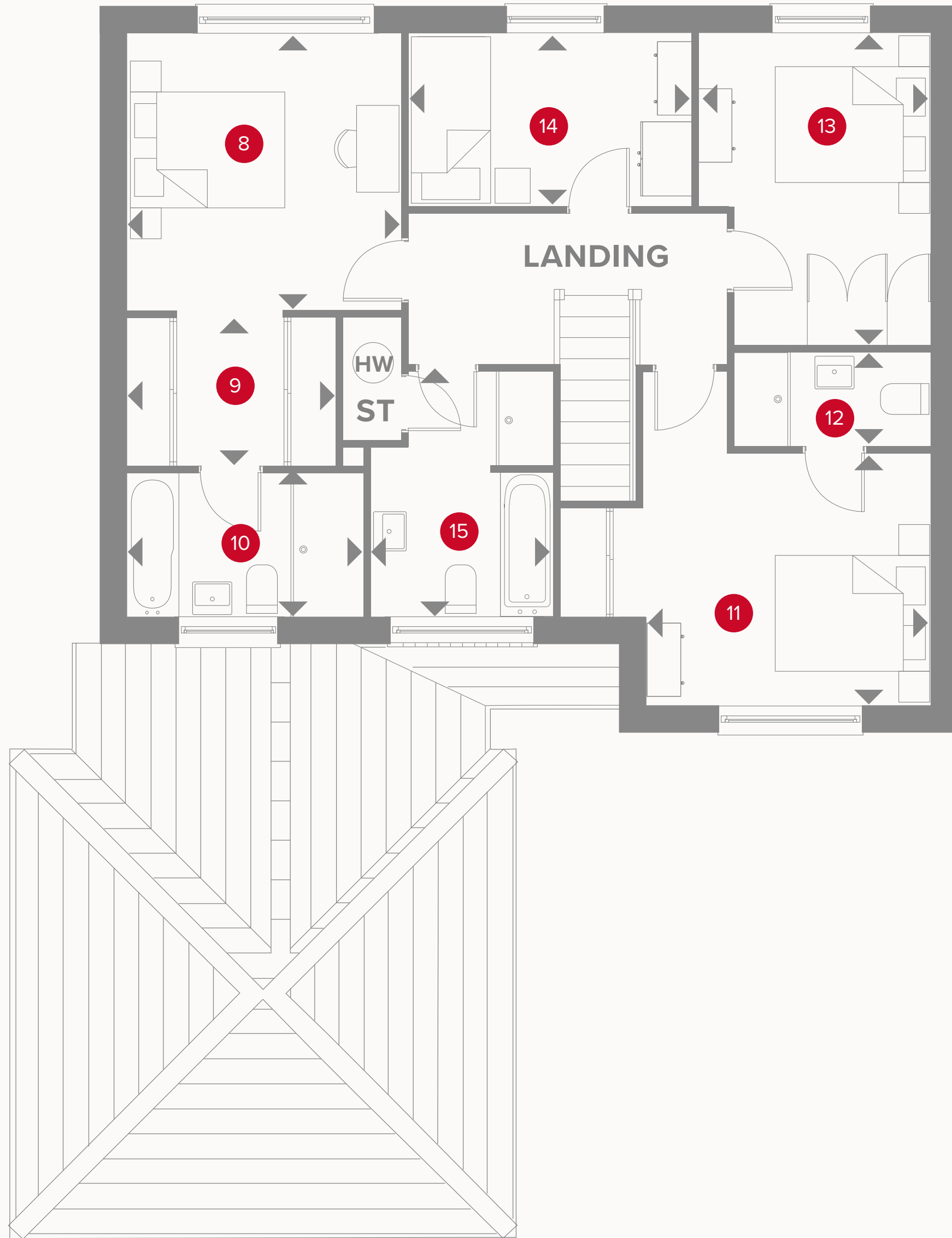
1	Lounge	15'10" x 11'10"	4.84 x 3.63m
2	Kitchen/Dining	19'11" x 16'8"	6.08 x 5.10m
3	Family	13'9" x 11'9"	4.19 x 3.60m
4	Study	13'0" x 9'8"	3.97 x 2.97m
5	Utility	7'3" x 5'5"	2.22 x 1.66m
6	Cloaks	6'0" x 3'7"	1.85 x 1.10m
7	Garage	17'9" x 17'4"	5.41 x 5.29m



## KEY

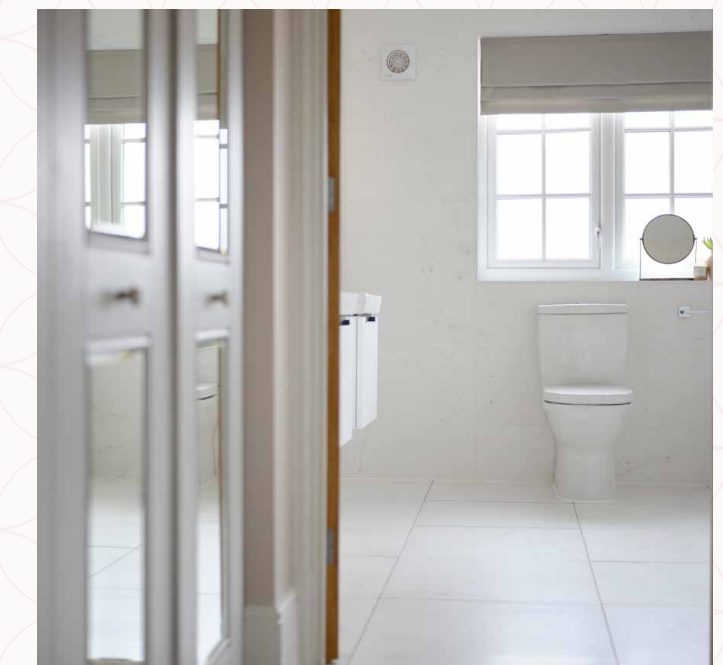
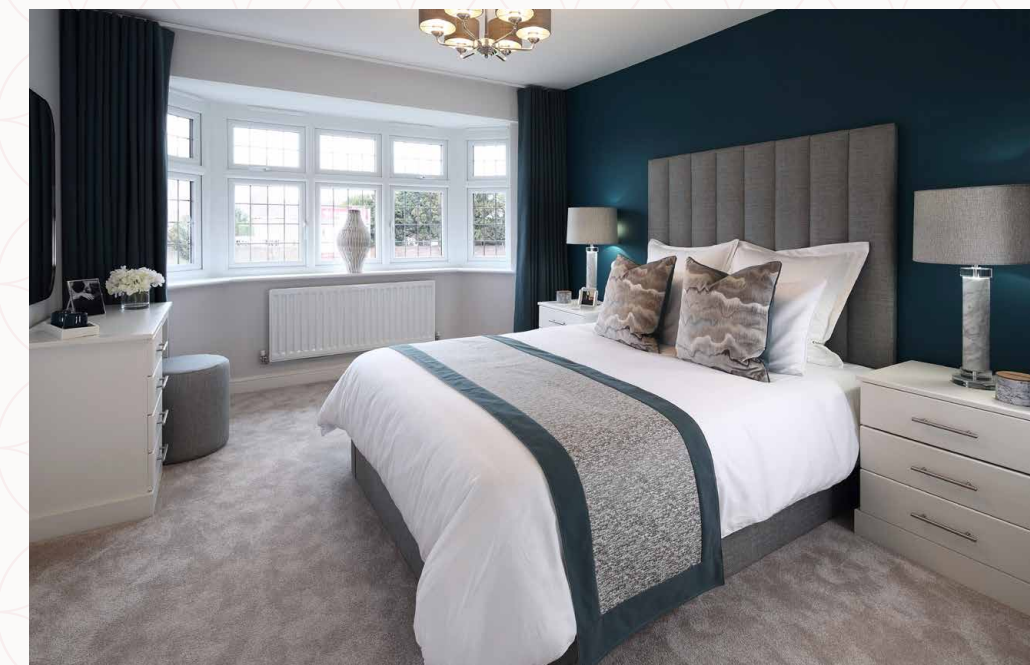
-  Hob
- OV** Oven
- FF** Fridge/freezer
- TD** Tumble dryer space

-  Dimensions start
- ST** Storage cupboard
- WM** Washing machine space
- DW** Dish washer space



# THE LEDSHAM FIRST FLOOR

8	Bedroom 1	11'7" x 11'6"	3.55 x 3.52m
9	Dressing	8'10" x 6'2"	2.68 x 1.88m
10	En-suite 1	9'11" x 6'1"	3.03 x 1.86m
11	Bedroom 2	15'6" x 10'6"	4.73 x 3.22m
12	En-suite 2	8'3" x 3'10"	2.53 x 1.18m
13	Bedroom 3	13'1" x 9'8"	3.99 x 2.96m
14	Bedroom 4	11'7" x 7'3"	3.55 x 2.23m
15	Bathroom	10'3" x 7'7"	3.13 x 2.33m



## KEY

- ◀ Dimensions start
- HW Hot water storage

**CONSUMER  
CODE FOR  
HOME BUILDERS**

[www.consumercode.co.uk](http://www.consumercode.co.uk)

Customers should note this illustration is an example of the Ledsham house type. All dimensions indicated are approximate and the furniture layout is for illustrative purposes only. Homes may be 'handed' (mirror image) versions of the illustrations, and may be detached, semi-detached or terraced. Materials used may differ from plot to plot including render and roof tile colours. Detailed plans and specifications are available for inspection for each plot at our Sales Centre during working hours and customers must check their individual specifications prior to making a reservation.