



HERITAGE

- REDROW -

THE HAMPSTEAD

FIVE BEDROOM DETACHED HOME

 **REDROW**



HERITAGE

- REDROW -

THE HAMPSTEAD

FIVE BEDROOM DETACHED HOME


 **REDROW**


THE HAMPSTEAD GROUND FLOOR

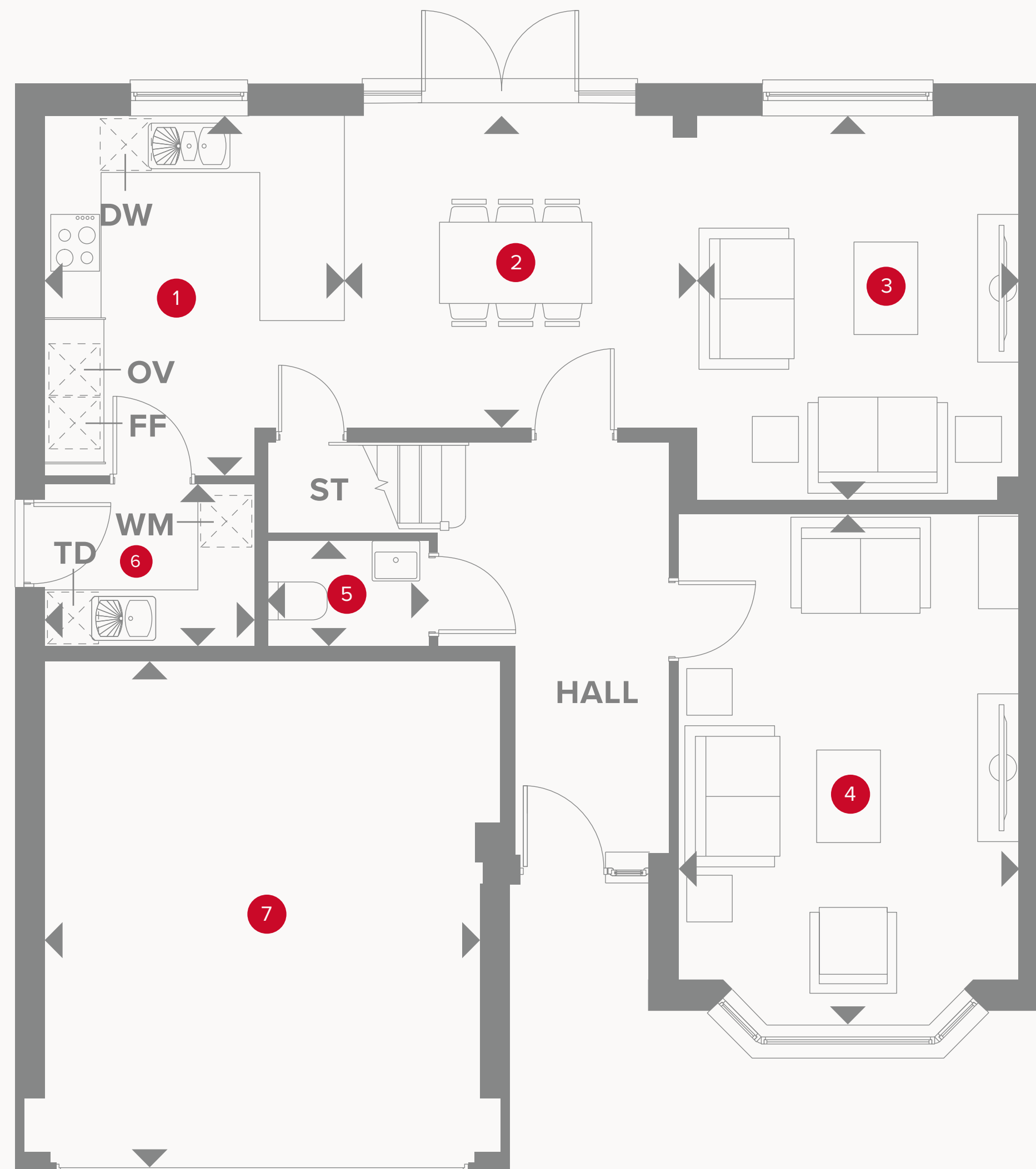
1 Kitchen	12'5" x 10'4"	3.79 x 3.16 m
2 Dining	12'5" x 10'10"	3.79 x 3.29 m
3 Family	13'5" x 11'3"	4.08 x 3.43 m
4 Lounge	17'8" x 11'11"	5.38 x 3.63 m
5 Cloaks	5'8" x 3'8"	1.72 x 1.11 m
6 Utility	7'3" x 5'7"	2.20 x 1.71 m
7 Garage	17'2" x 16'0"	5.23 x 4.88 m



KEY

-  Hob
- OV** Oven
- FF** Fridge/freezer
- TD** Tumble dryer space

-  Dimensions start
- ST** Storage cupboard
- WM** Washing machine space
- DW** Dish washer space





THE HAMPSTEAD FIRST FLOOR

8	Bedroom 1	14'11" x 13'9"	4.55 x 4.18 m
9	En-suite 1	8'3" x 6'0"	2.52 x 1.83 m
10	Bedroom 2	11'0" x 9'11"	3.35 x 3.03 m
11	En-suite 2	7'3" x 6'5"	2.22 x 1.96 m
12	Bedroom 3	14'10" x 10'8"	4.52 x 3.24 m
13	Bedroom 4	11'0" x 9'9"	3.35 x 2.97 m
14	Bedroom 5/Study	11'0" x 7'10"	3.35 x 2.40 m
15	Bathroom	9'2" x 7'4"	2.79 x 2.23 m



**CONSUMER
CODE FOR
HOME BUILDERS**
www.consumercode.co.uk

Customers should note this illustration is an example of the Hampstead house type. All dimensions indicated are approximate and the furniture layout is for illustrative purposes only. Homes may be 'handed' (mirror image) versions of the illustrations, and may be detached, semi-detached or terraced. Materials used may differ from plot to plot including render and roof tile colours. Detailed plans and specifications are available for inspection for each plot at our Customer Experience Suites during working hours and customers must check their individual specifications prior to making a reservation. Computer generated images are for indicative purposes only.

KEY

◀ Dimensions start **LH** Loft hatch
ST Storage cupboard **HW** Hot water cylinder