



# The Leamington Lifestyle

*Three Bedroom Home*





# The Leamington Lifestyle

*Three Bedroom Home*

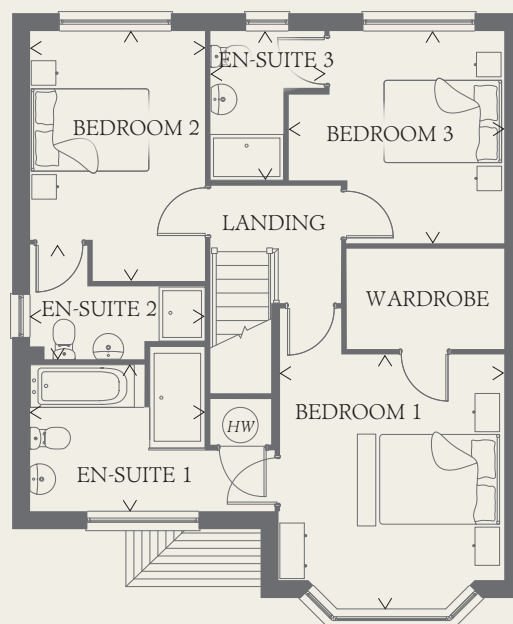
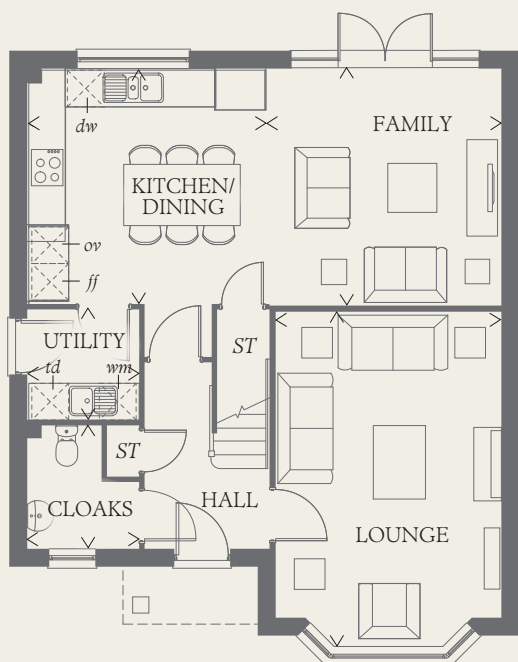




# The Leamington Lifestyle

## Three Bedroom Home

The Leamington Lifestyle takes luxury living to a whole new level by taking the space of a four bed home and sharing it out amongst three, each with their own en-suite, creating a superior home of the very highest standard.



### GROUND FLOOR

LOUNGE	17'10" x 11'11"	5.44 x 3.63 m
KITCHEN/ DINING	12'8" x 12'6"	3.87 x 3.82 m
FAMILY	12'6" x 12'6"	3.82 x 3.81 m
UTILITY	5'11" x 5'11"	1.81 x 1.80 m
CLOAKS	6'6" x 5'11"	1.99 x 1.80 m

### FIRST FLOOR

BEDROOM 1	13'6" x 11'11"	4.09 x 3.63 m
EN-SUITE 1	9'3" x 7'9"	2.83 x 2.37 m
WARDROBE	8'4" x 5'5"	2.54 x 1.65 m
BEDROOM 2	13'3" x 9'3"	4.04 x 2.83 m
EN-SUITE 2	9'3" x 6'1"	2.83 x 1.85 m
BEDROOM 3	11'5" x 11'3"	3.49 x 3.44 m
EN-SUITE 3	7'11" x 6'1"	2.41 x 1.85 m

**CONSUMER  
CODE FOR  
HOME BUILDERS**

[www.consumercode.co.uk](http://www.consumercode.co.uk)

Customers should note this illustration is an example of the Leamington Lifestyle house type. All dimensions indicated are approximate and the furniture layout is for illustrative purposes only. Homes may be 'handed' (mirror image) versions of the illustrations, and may be detached, semi-detached or terraced. Materials used may differ from plot to plot including render and roof tile colours. Detailed plans and specifications are available for inspection for each plot at our Sales Centre during working hours and customers must check their individual specifications prior to making a reservation.

#### KEY

Hob	Tumble dryer space
Oven	Hot water cylinder
Fridge/freezer	Cupboard
Washing machine space	
Dishwasher space	

< Denotes where dimensions are taken from. All wardrobes are subject to site specification. Please see Sales Consultant for further details.

THINK 207725\_EF\_LEAMQ\_DM.1.0 RV