



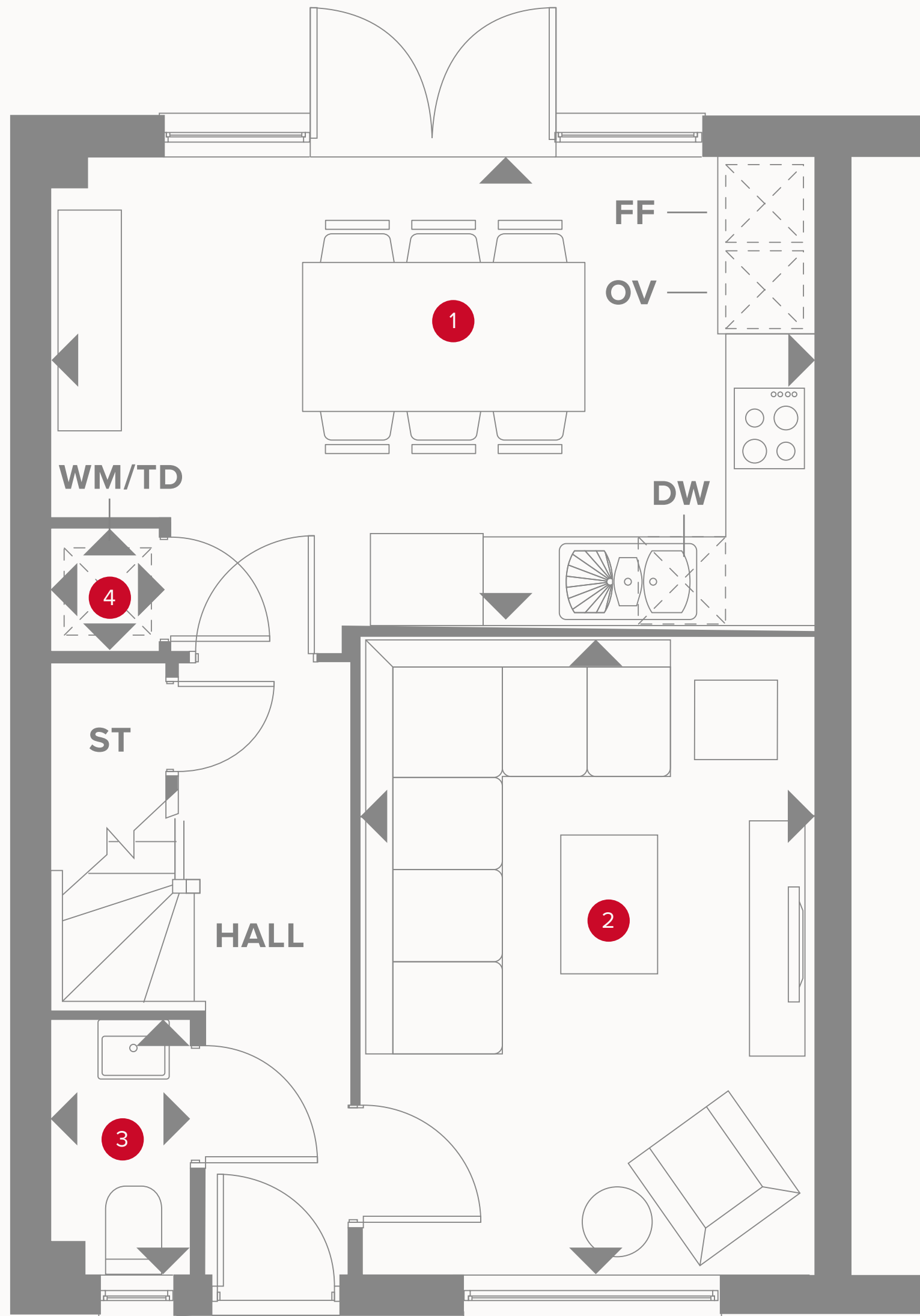
**HERITAGE**

- REDROW -

# THE LINCOLN

THREE BEDROOM HOME





# THE LINCOLN GROUND FLOOR

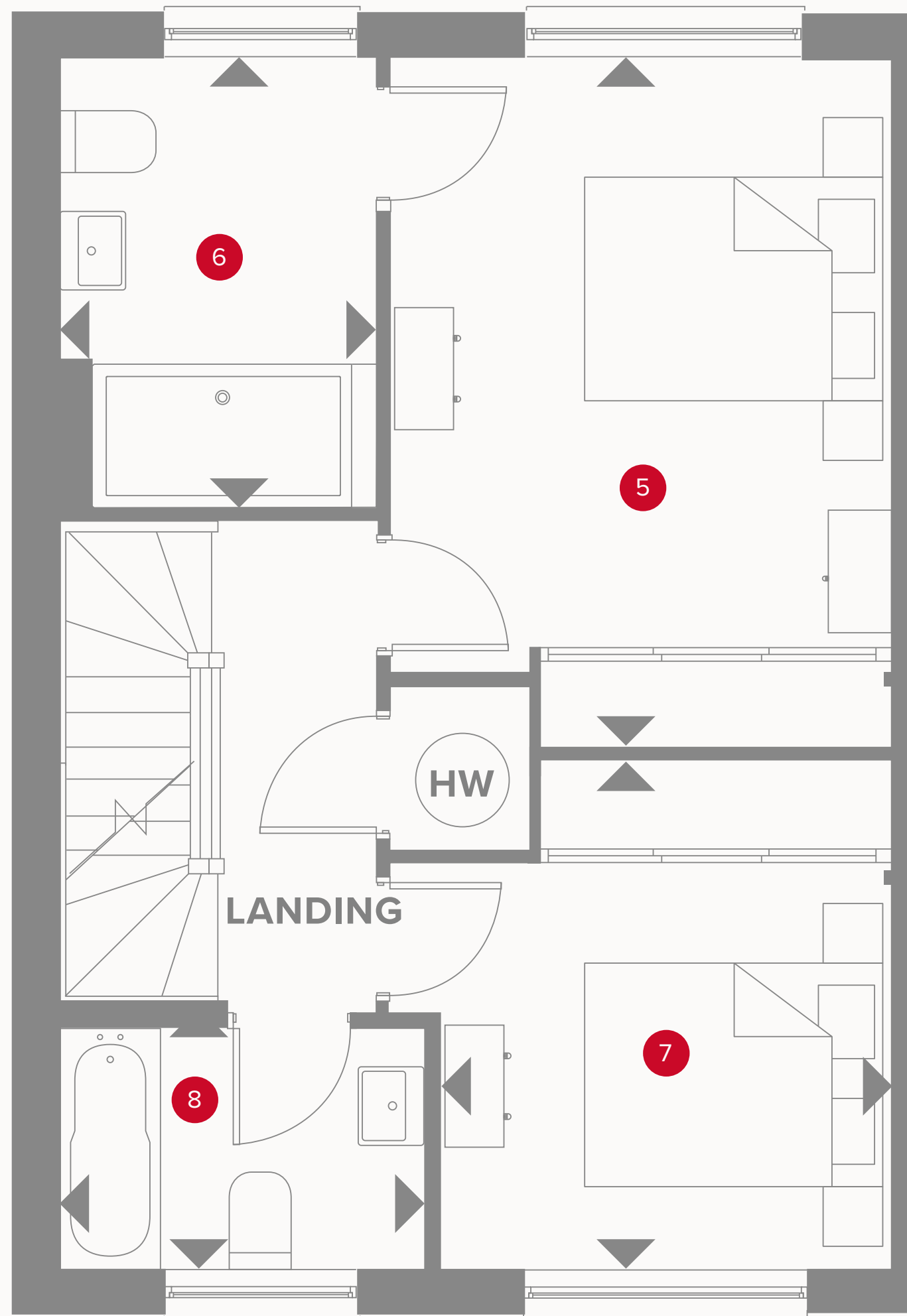
1	Kitchen/Dining	17'9" x 11'0"	5.48 x 3.36 m
2	Lounge	15'0" x 10'7"	4.60 x 3.26 m
3	Cloaks	6'9" x 3'4"	2.05 x 1.01 m
4	Laundry	2'9" x 2'5"	0.89 x 0.78 m



## KEY

	Hob
<b>OV</b>	Oven
<b>FF</b>	Fridge/freezer
<b>WM/TD</b>	Tumble dryer/Washing machine space

	Dimensions start
<b>ST</b>	Storage cupboard
<b>DW</b>	Dish washer space



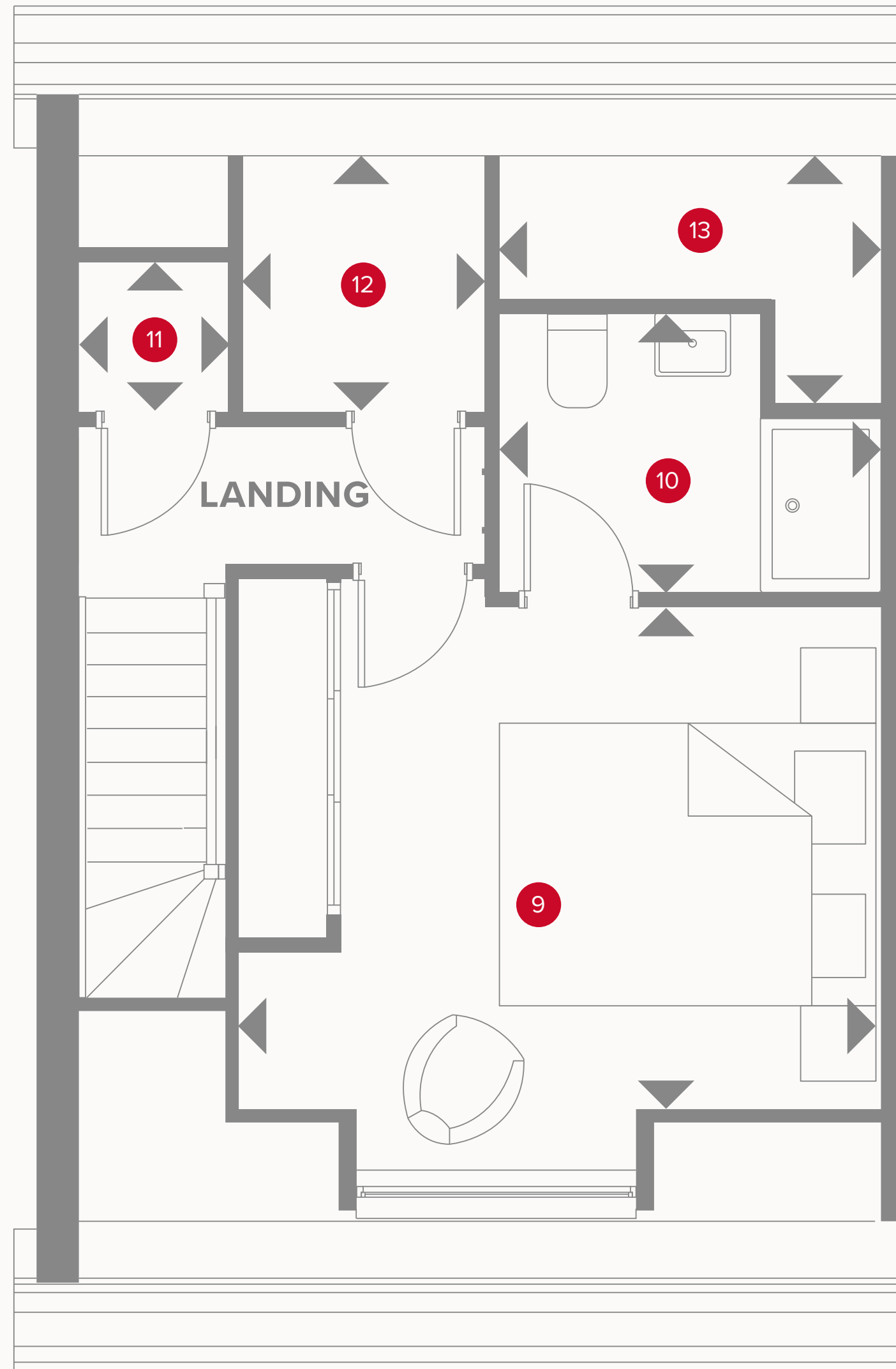
# THE LINCOLN FIRST FLOOR

5	Bedroom 1	14'10" x 10'11"	4.51 x 3.33 m
6	En-suite 1	9'7" x 6'8"	2.97 x 2.08 m
7	Bedroom 3	11'5" x 9'10"	3.48 x 3.00 m
8	Bathroom	7'9" x 5'5"	2.41 x 1.70 m



## KEY

- ◀ Dimensions start
- HW Hot Water



# THE LINCOLN SECOND FLOOR

9	Bedroom 2	12'2" x 11'4"	3.72 x 3.46 m
10	Ensuite 2	8'8" x 6'4"	2.64 x 1.93 m
11	Boiler	3'5" x 3'5"	1.04 x 1.03 m
12	Store	5'7" x 5'6"	1.71 x 1.67 m
13	Roof Access	8'8" x 5'8"	2.64 x 1.72 m



## KEY

◀ Dimensions start



Customers should note this illustration is an example of the Lincoln house type. All dimensions indicated are approximate and the furniture layout is for illustrative purposes only. Homes may be 'handed' (mirror image) versions of the illustrations, and may be detached, semi-detached or terraced. Materials used may differ from plot to plot including render and roof tile colours. Detailed plans and specifications are available for inspection for each plot at our Sales Centre during working hours and customers must check their individual specifications prior to making a reservation.