

FARNLEY

4 BEDROOM HOME
DETACHED

THE
POINT
—
AT THORPE PARK
LEEDS

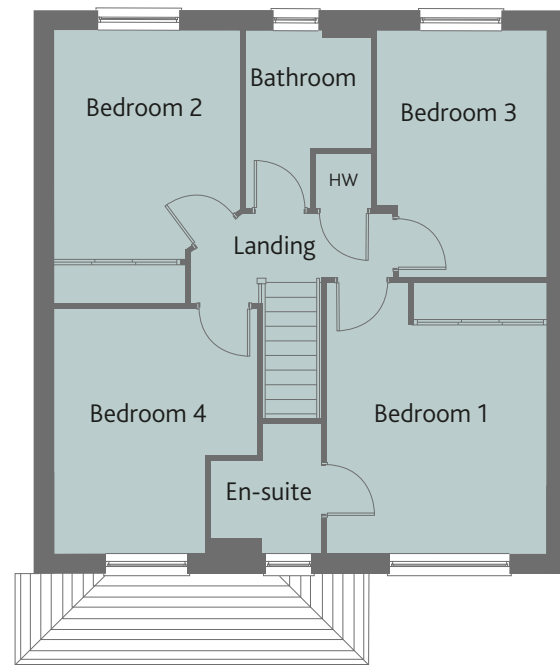
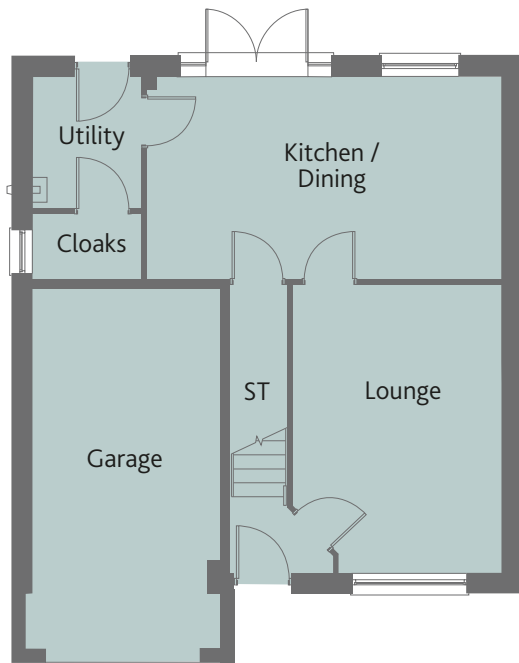


 **REDROW**
A BETTER WAY TO LIVE

FARNLEY

4 BEDROOM HOME

DETACHED



The perfect home to provide a foundation for family life, the Farnley is elegantly designed to enhance each detail of the home.

A spacious layout provides four bedrooms, three of them doubles, a well-planned kitchen/dining room and a comfortable lounge in which to relax.

GROUND FLOOR

Kitchen/ Dining	18'8" x 10'7"	5.73 x 3.27 m
Lounge	15'3" x 11'1"	4.69 x 3.40 m
Cloaks	5'9" x 3'6"	1.81 x 1.12 m
Utility	6'9" x 5'9"	2.13 x 1.81 m
Garage	19'0" x 10'10"	5.80 x 3.08 m

FIRST FLOOR

Bedroom 1	11'5" x 11'1"	3.53 x 3.40 m
En-suite 1	6'6" x 5'6"	2.01 x 1.71 m
Bedroom 2	13'7" x 9'5"	4.19 x 2.91 m
Bedroom 3	12'4" x 8'6"	3.80 x 2.63 m
Bedroom 4	12'4" x 10'3"	3.80 x 3.16 m
Bathroom	8'9" x 6'3"	2.74 x 1.94 m

KEY Hob ST Cupboard

Note: Bedroom dimensions taken into wardrobe recess.
All wardrobes are subject to site specification. Please see Sales Consultant for further details.



Customers should note this illustration is an example of the Farnley house type. All dimensions indicated are approximate and the furniture layout is for illustrative purposes only. Homes may be 'handed' (mirror image) versions of the illustrations, and may be detached, semi-detached or terraced. Materials used may differ from plot to plot including render and roof tile colours. Detailed plans and specifications are available for inspection for each plot at our Sales Centre during working hours and customers must check their individual specifications prior to making a reservation.

