



# Malvern

THREE BEDROOM HOME



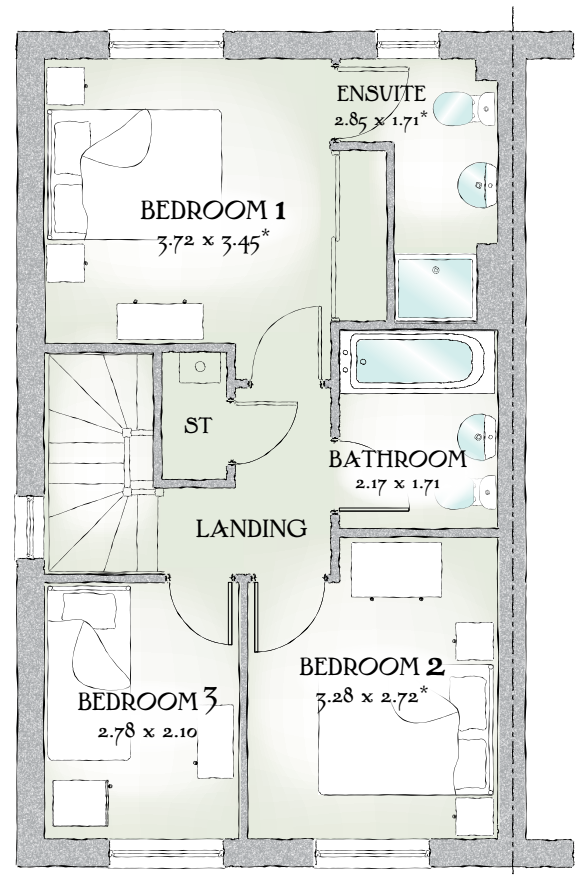
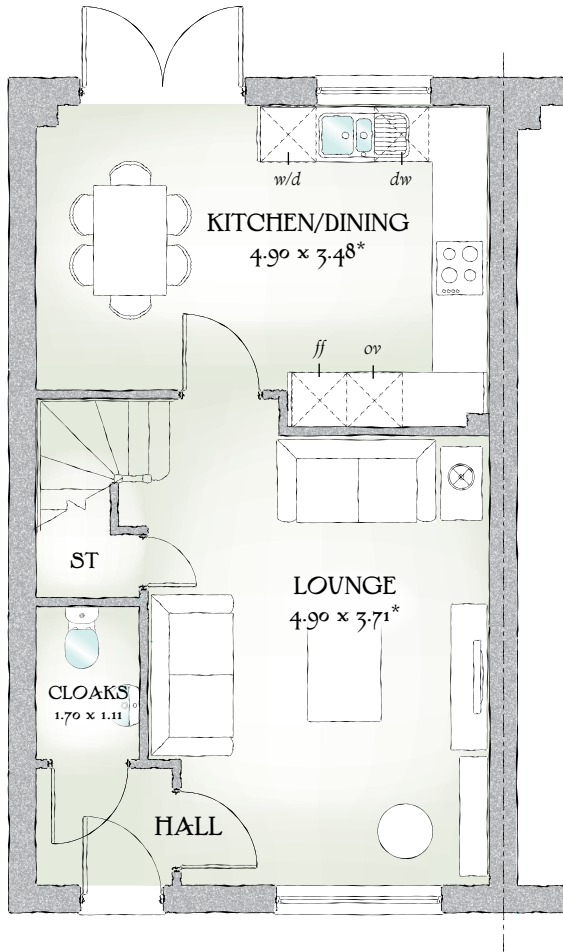


# Malvern

THREE BEDROOM HOME



 REDROW



908 SQ FT | THREE BEDROOM HOME

**S**imple, yet stylish, compact yet undeniably chic, these superb homes offer the perfect combination of quality and value, space and savings, all created with the same high levels of craftsmanship that set all Redrow Homes apart.

## GROUND FLOOR


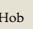
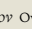
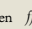
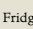
Lounge	16'1" x 12'2"	4.90 x 3.71 m*
Kitchen/ Dining	16'1" x 11'5"	4.90 x 3.48 m*
Cloaks	5'7" x 3'8"	1.70 x 1.11 m

## FIRST FLOOR

Bedroom 1	12'2" x 11'4"	3.72 x 3.45 m*
En-suite	9'4" x 5'7"	2.85 x 1.71 m*
Bedroom 2	10'9" x 8'11"	3.28 x 2.72 m*
Bedroom 3	9'1" x 6'11"	2.78 x 2.10 m
Bathroom	7'1" x 5'7"	2.17 x 1.71 m

Customers should note this illustration is an example of The Malvern house type. All dimensions indicated are approximate and furniture layout is for illustrative purposes only. Homes may be a 'handed' (mirror image) versions of the illustrations, and may be detached, semi-detached or terraced. Materials used may differ from plot to plot including render and roof tile colours. Detailed plans and specifications are available for inspection for each plot at our Sales Centre during working hours and customers must check their individual specifications prior to making reservation.

Redrow.co.uk give notice that the property particulars and related information on this site, whilst believed to be accurate, are set as a general outline for guidance only. Intending purchasers should not rely on them as statements or representations of fact, but must satisfy themselves before physical inspection as to their availability, or by physical inspection of the property in question or otherwise as to their accuracy or fit for purpose. Consequently, no information displayed on this site (or linked sites) constitutes or forms part of a contract. Materials used may differ from plot to plot including render and roof tile colours.

KEY  Hob  Oven  Fridge/freezer  w/d Washer / dryer space  dw Dishwasher space \* Max dimensions Note: Bedroom dimensions taken into wardrobe recess. All wardrobes are subject to site specification. Please see Sales Consultant for further details.

Traditional homes, built the way you remember